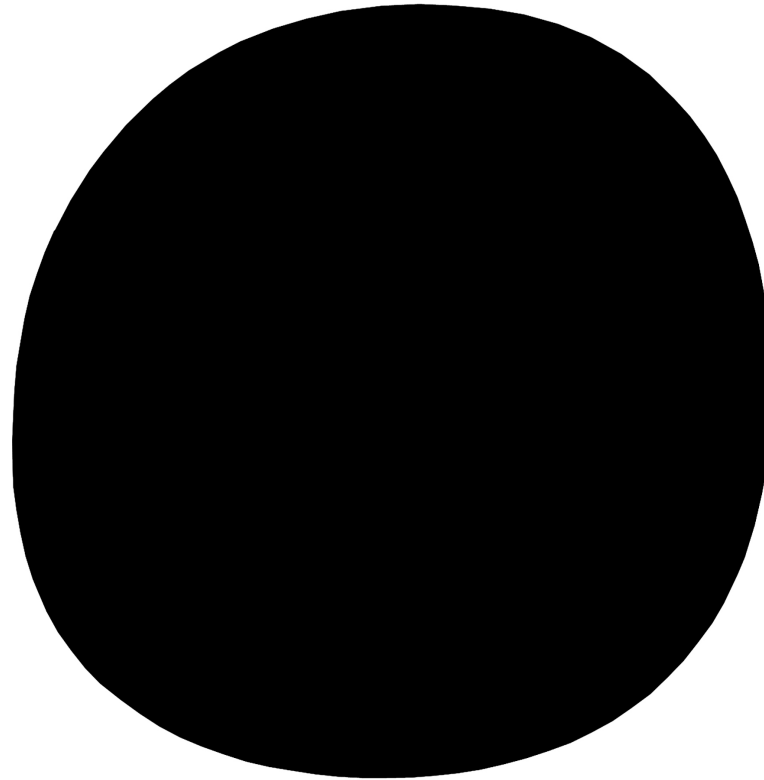


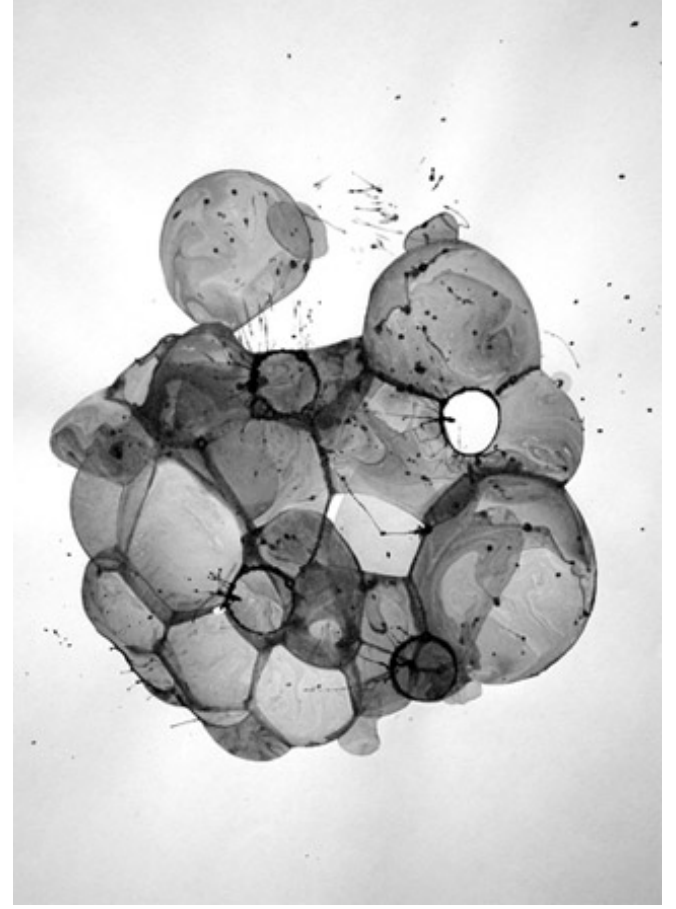
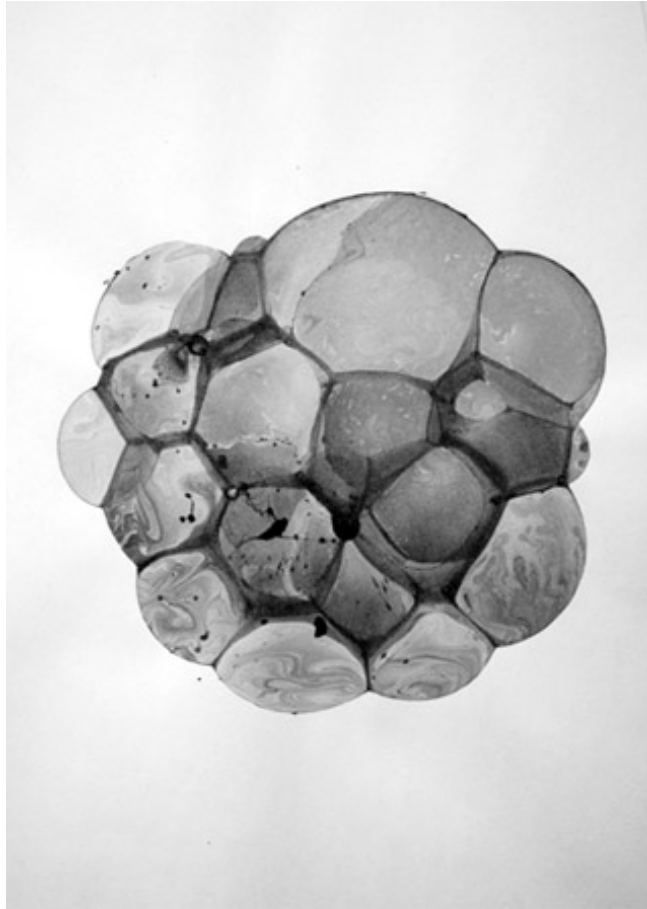
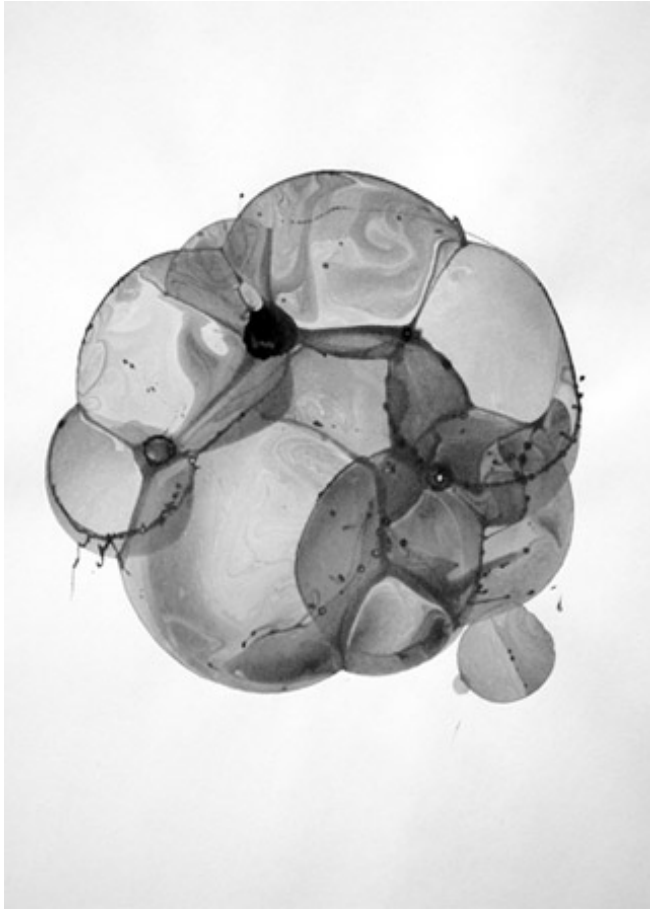
13 february 2020

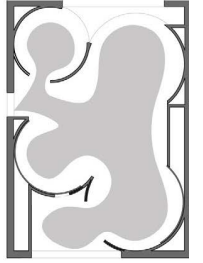
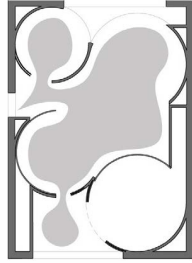
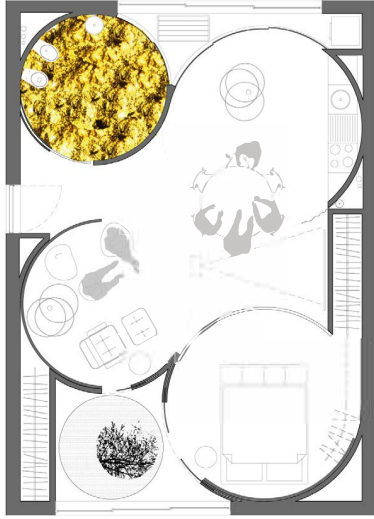
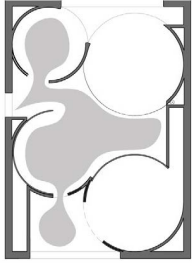
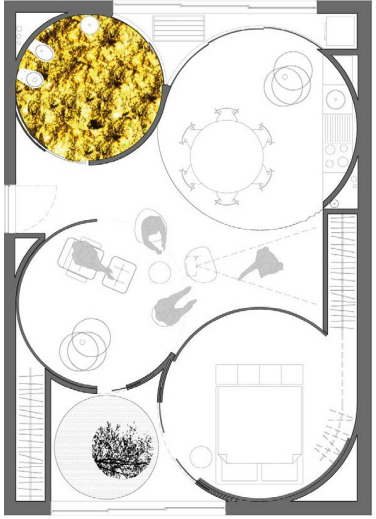
University of Antwerp

IDW



mono atelier

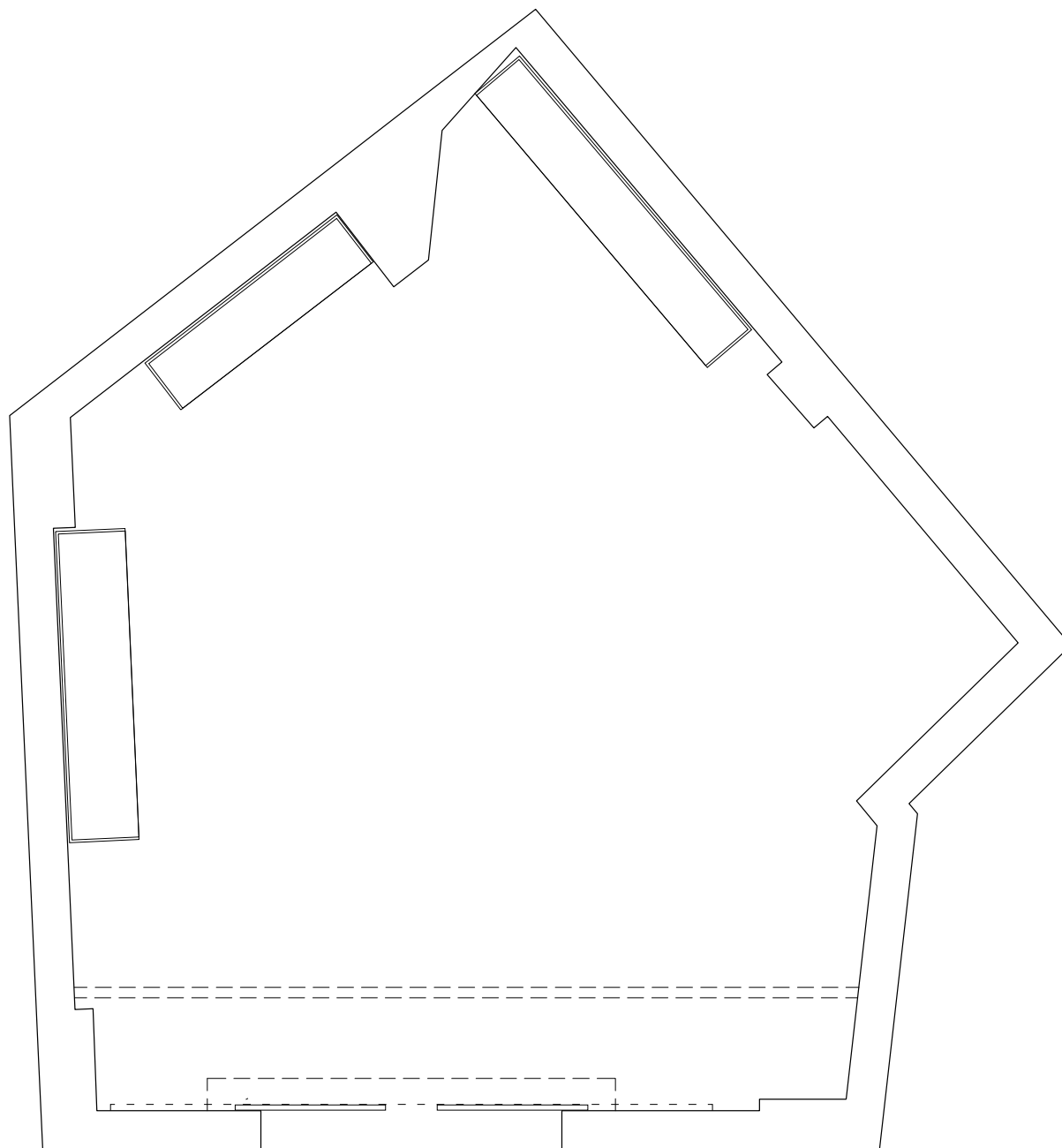


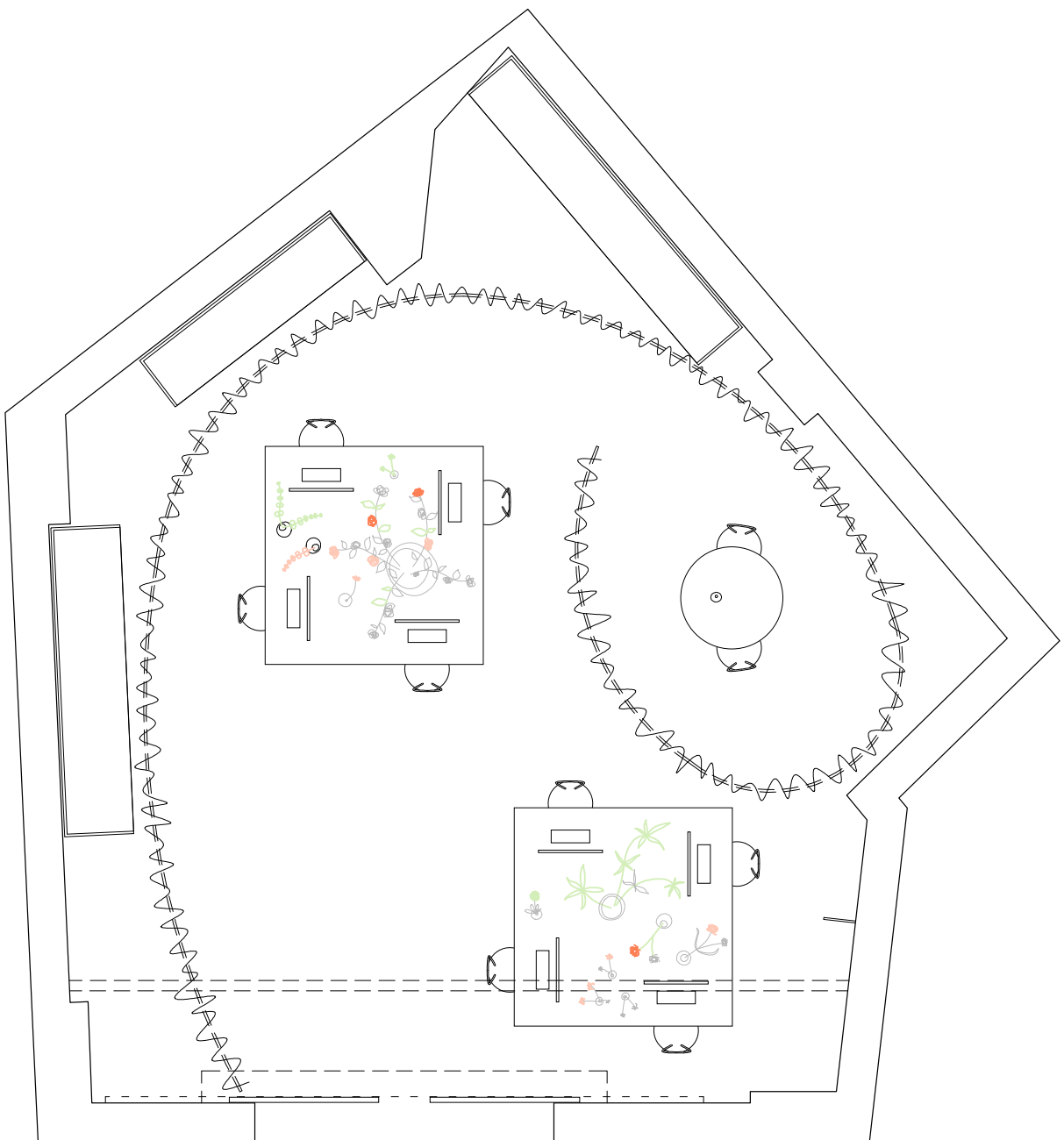


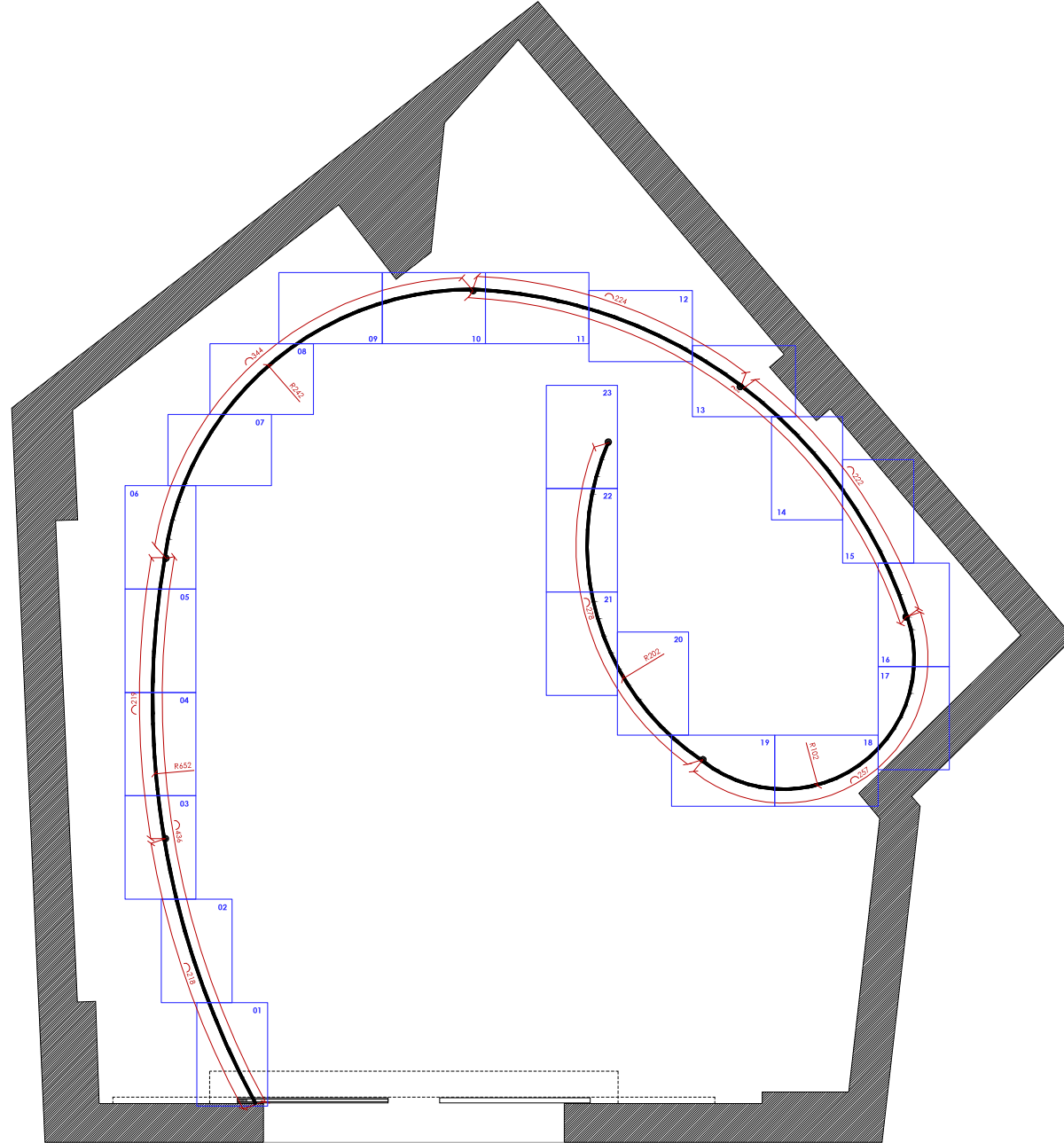


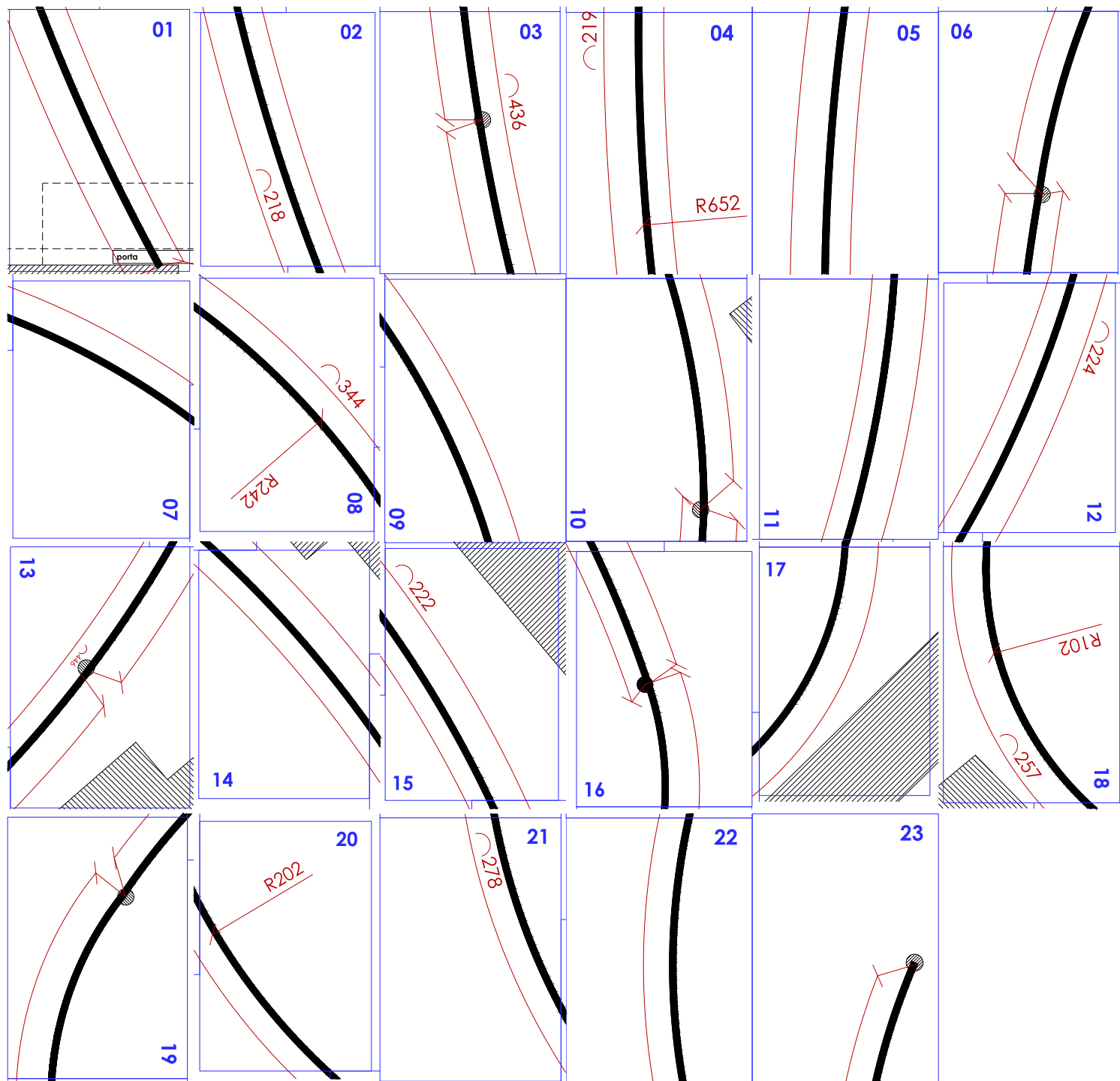


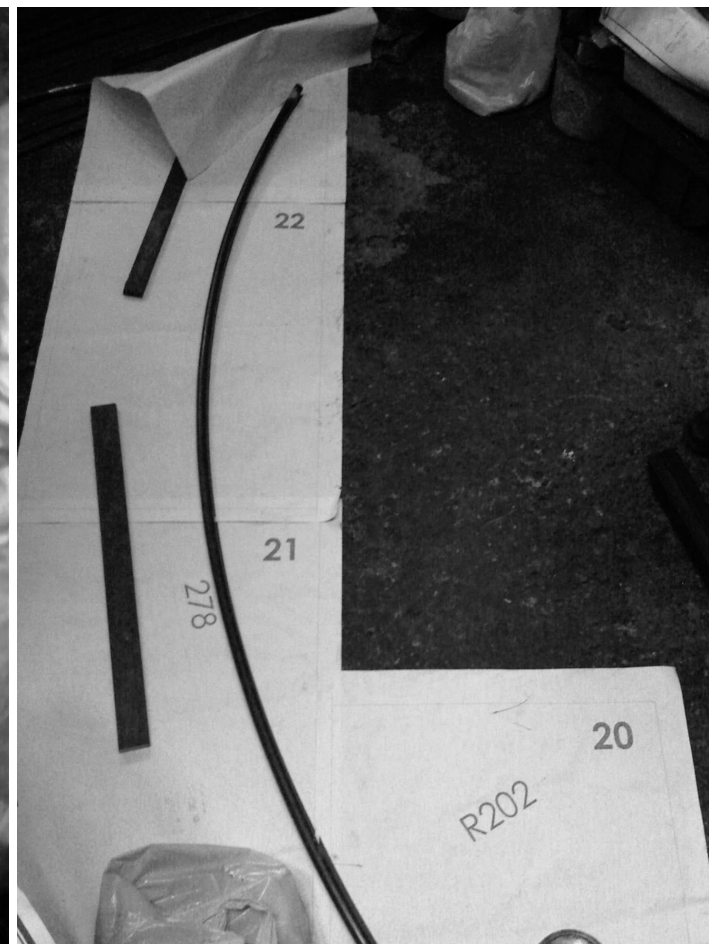


























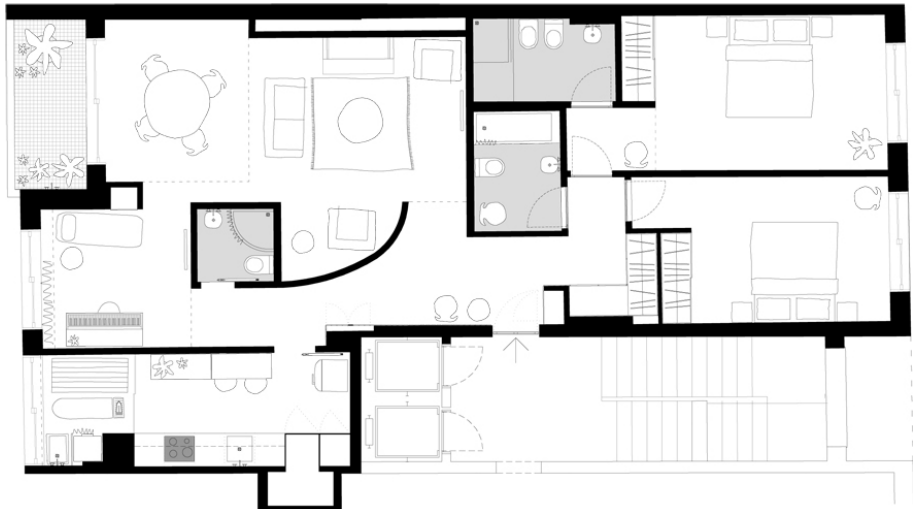
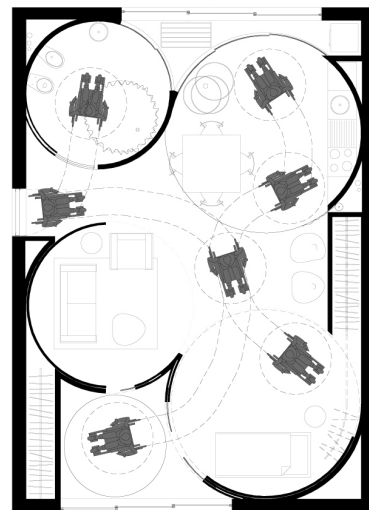
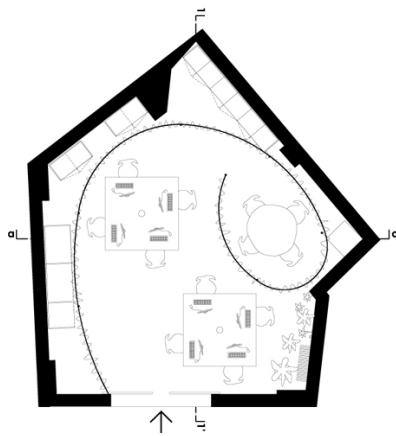
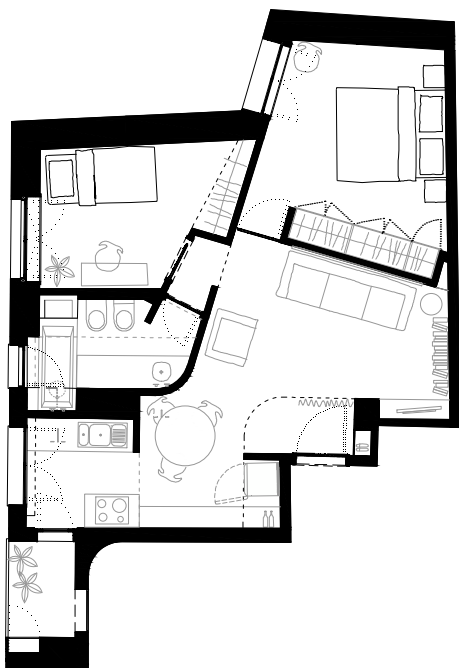
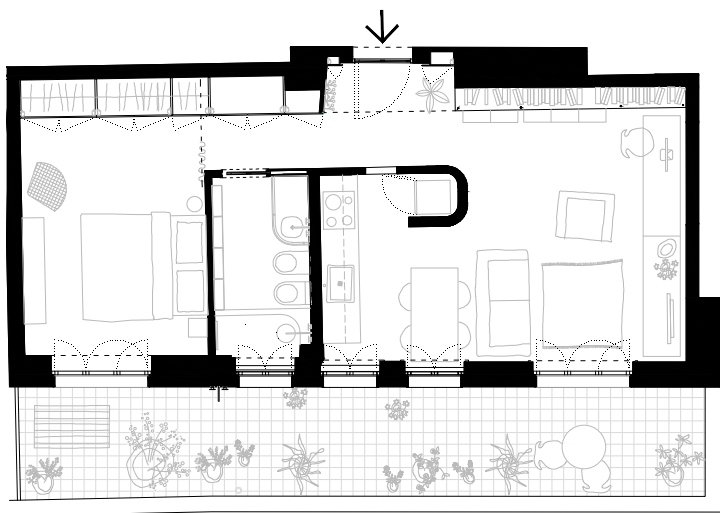
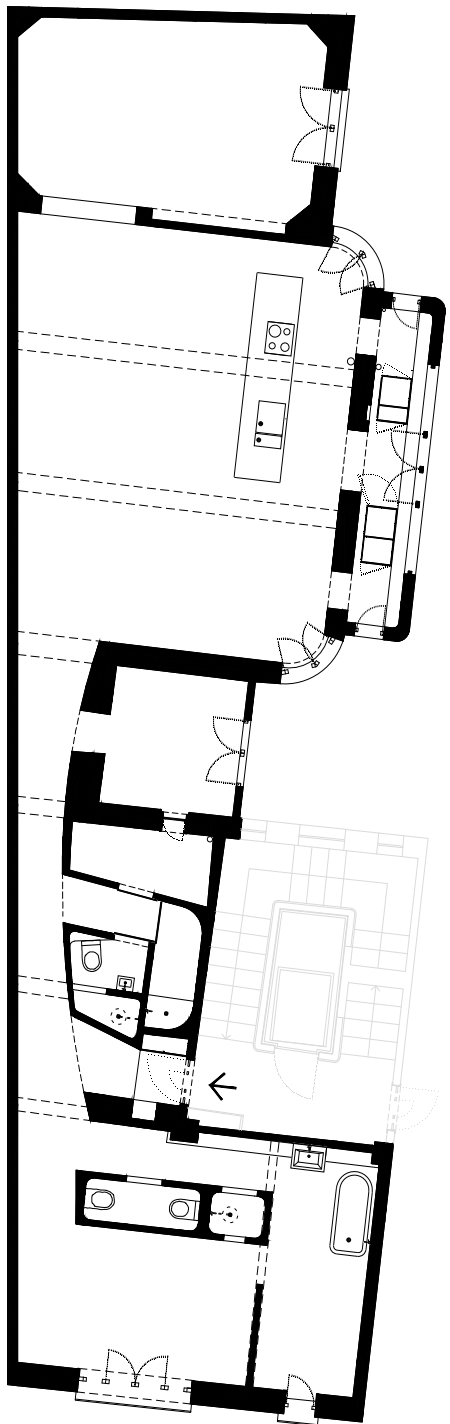


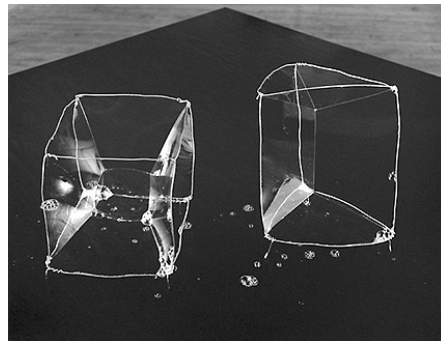
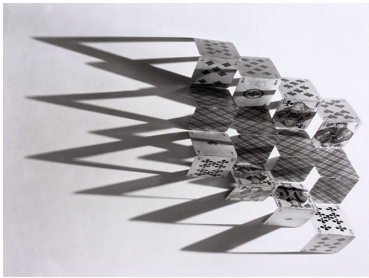
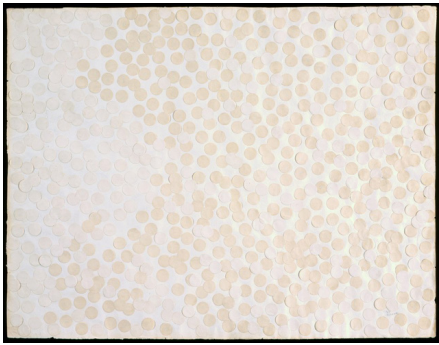












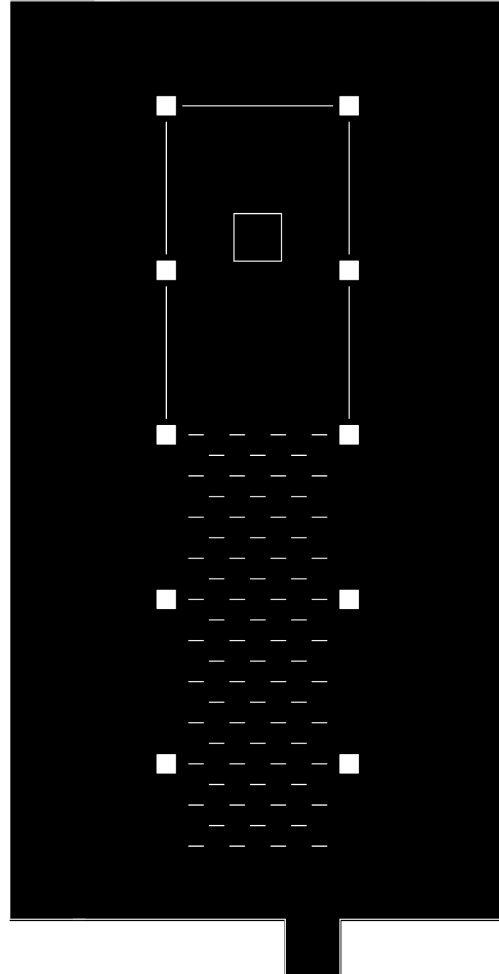


MAZE - Tony Smith 1967



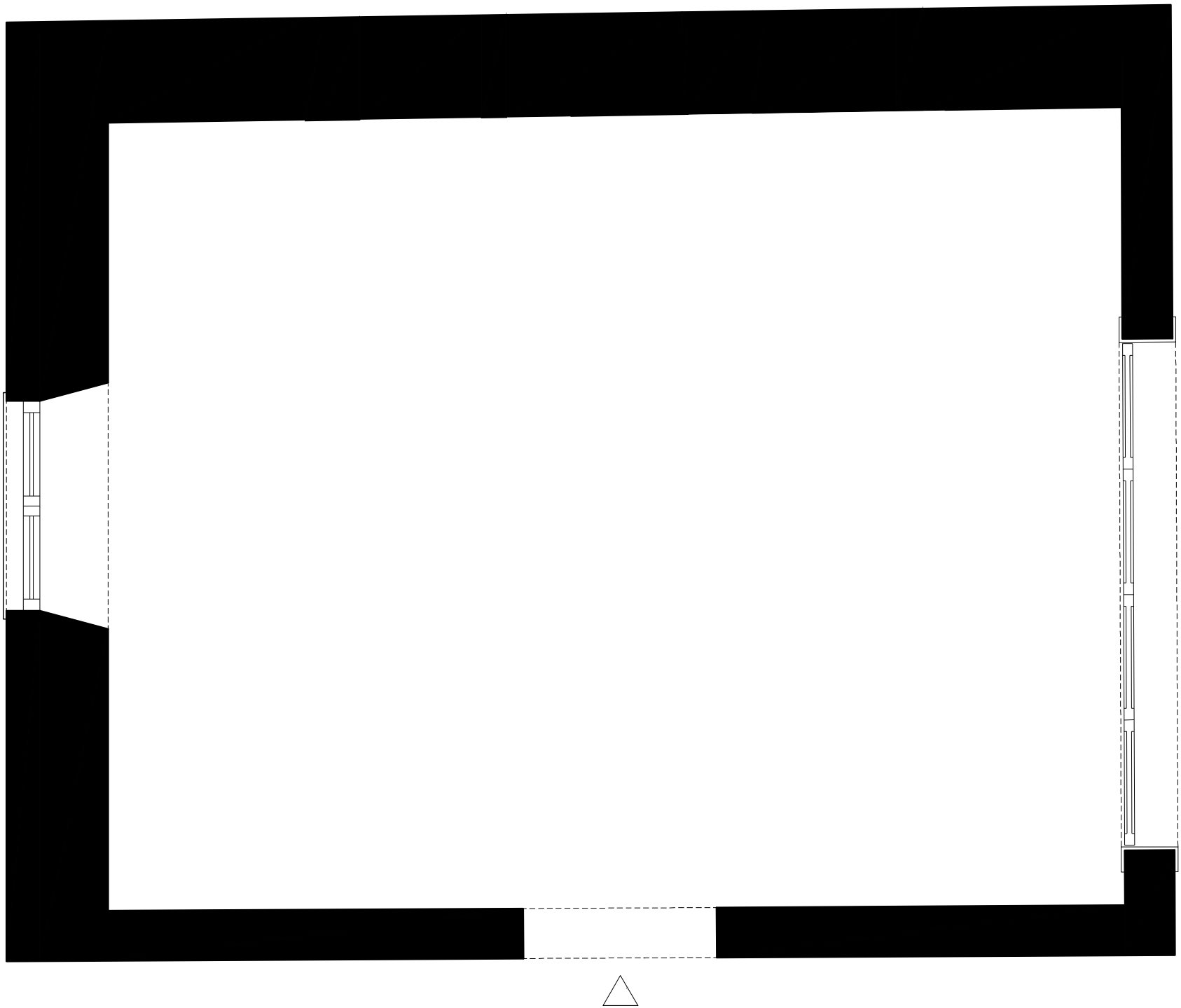


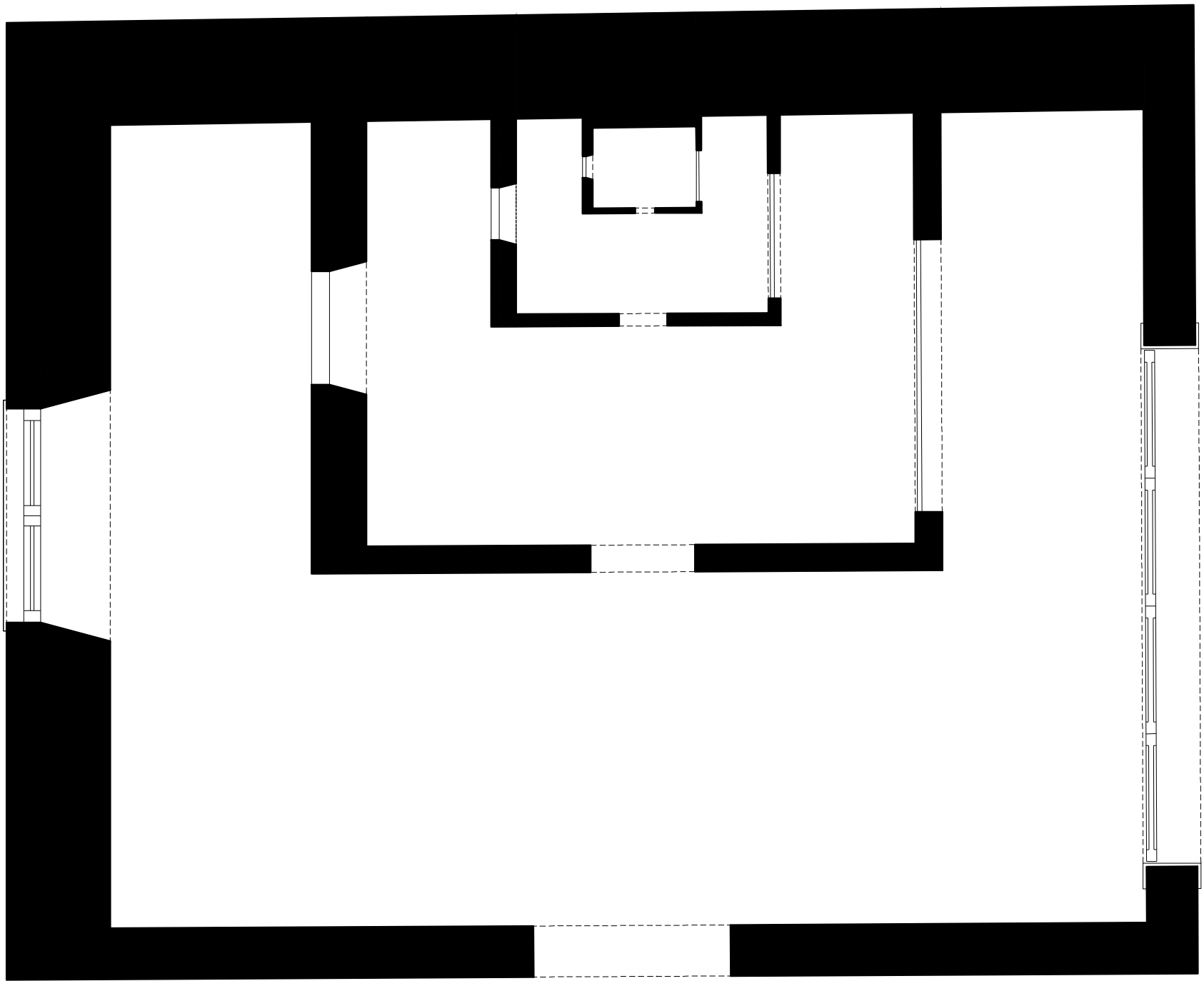


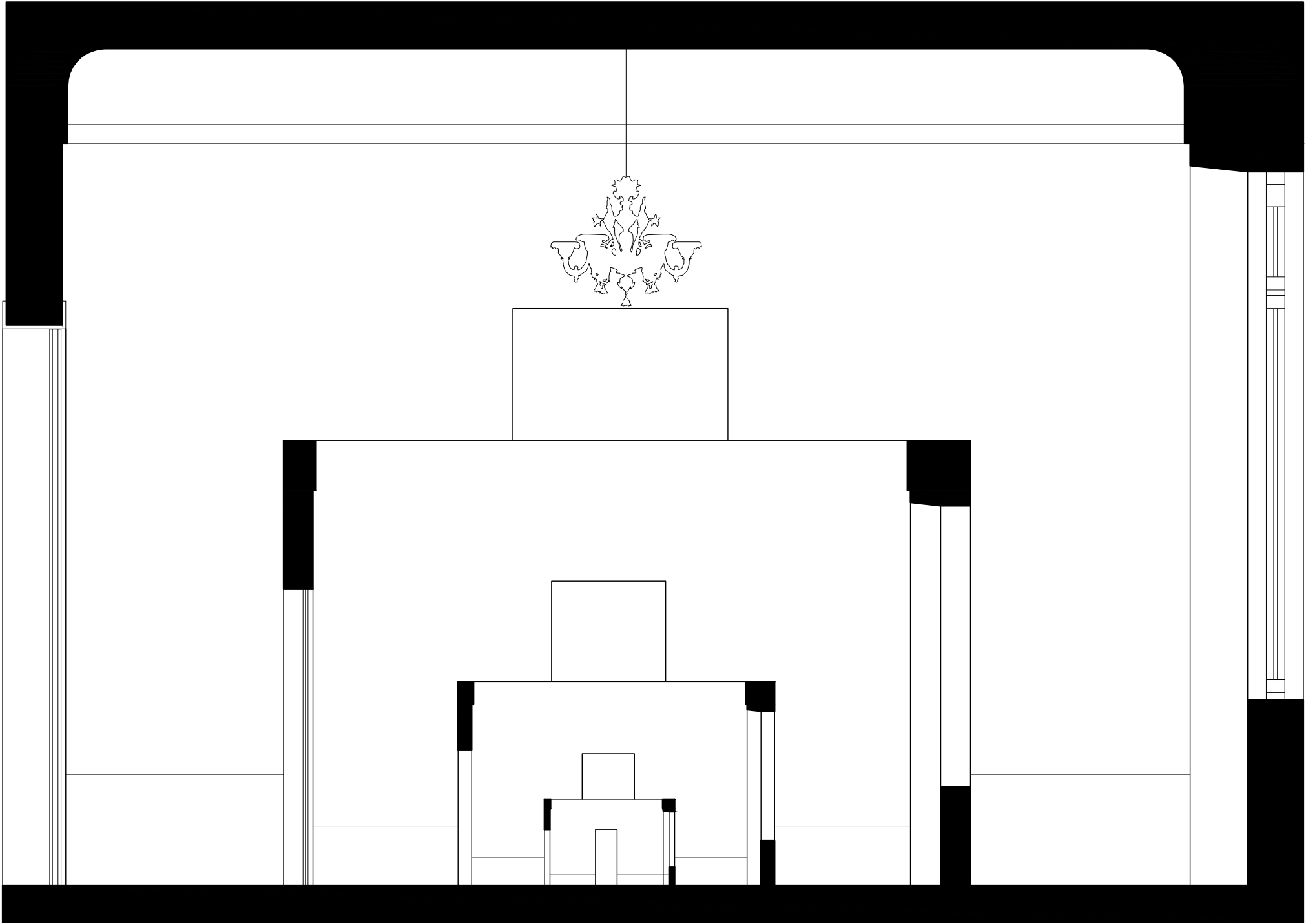


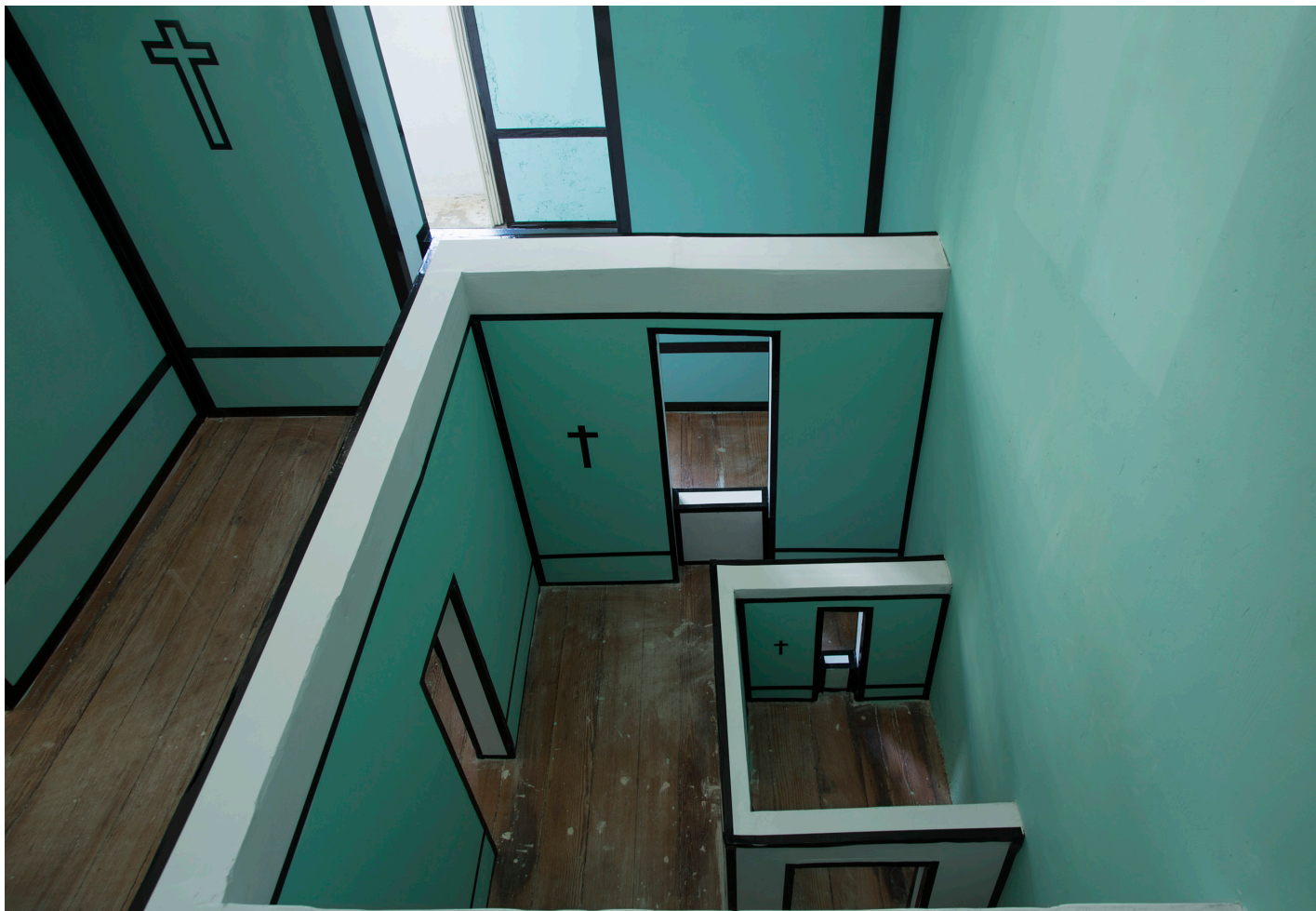












©Rui Manuel Vieira



©Rui Manuel Vieira



“ It is not the right angle that attracts me.

Not a straight, hard, inflexible line,
created by man.

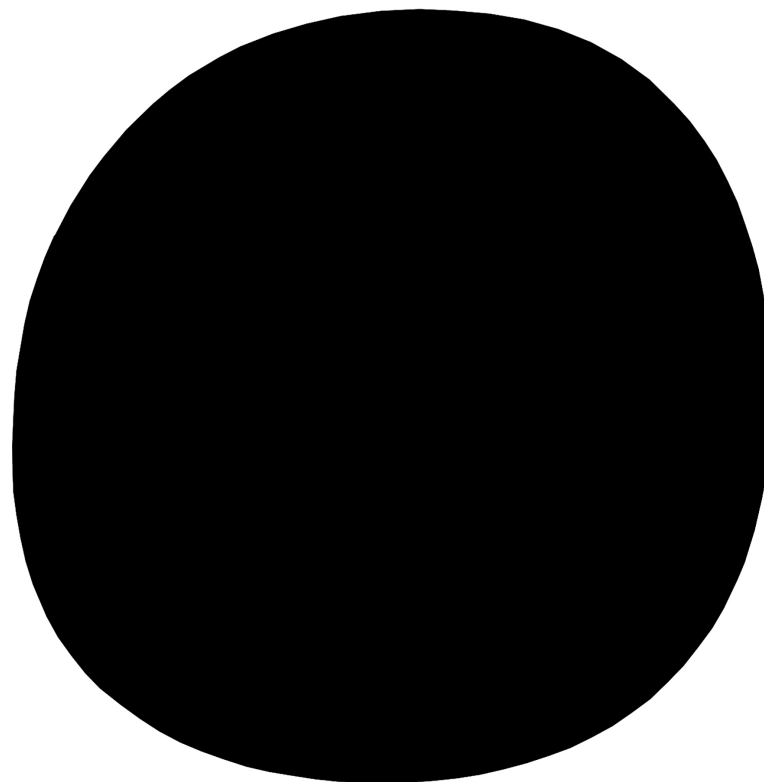
What attracts me is a free and sensual curve.

The curve you find in the mountains of my country,
in the gentle course of its rivers, in the waves
of the sea, in the clouds of the sky, in the body
of the favorite woman.

The entire Universe is made of curves.

Einstein’s curved Universe ”

Oscar Niemeyer



mono atelier

www.monoatelier.com