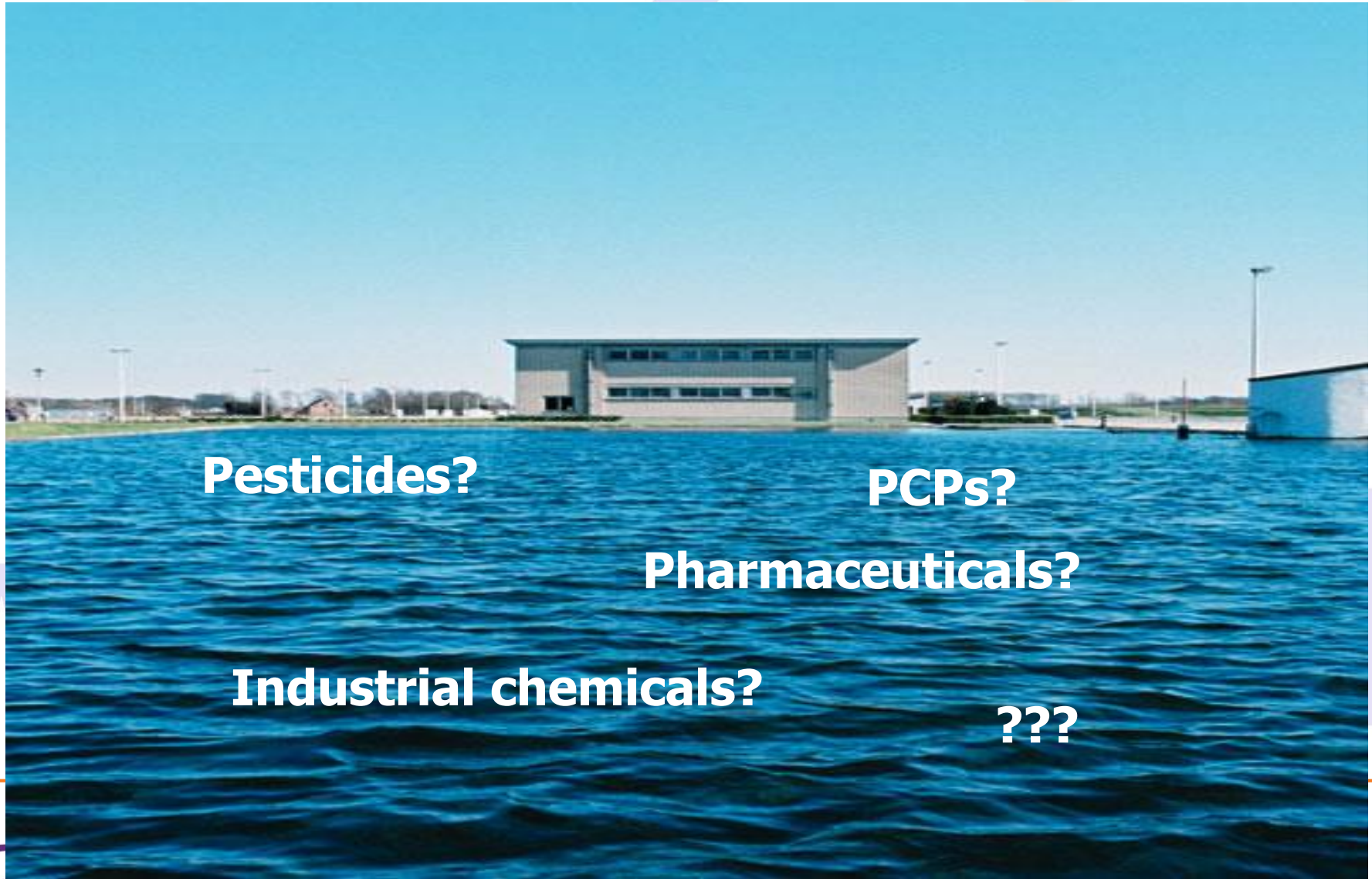




Actively searching for pollutants? Screening!

P. Joos, E. Van Meenen, K. Van Den Steen

Why screening?



Pesticides?

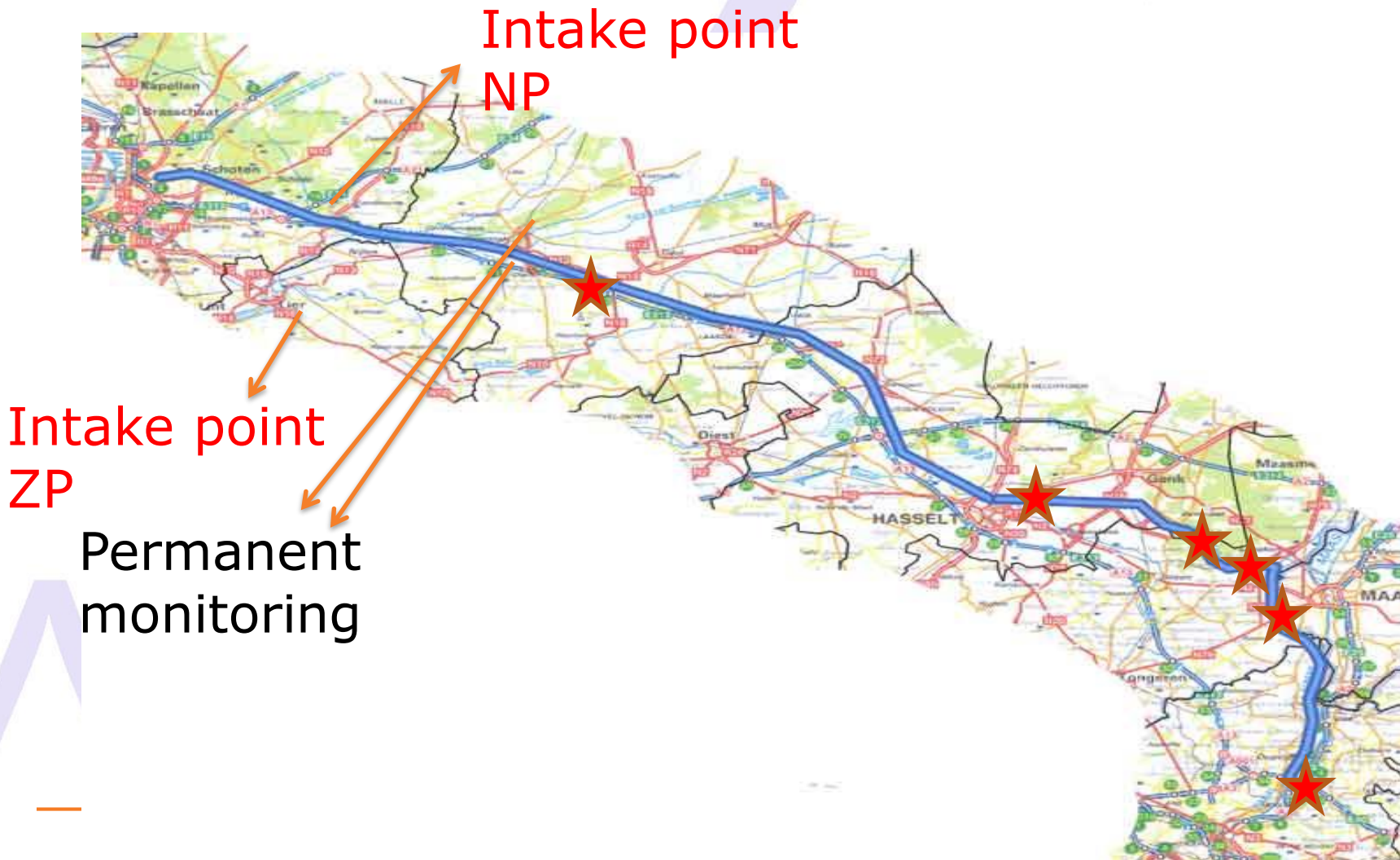
PCPs?

Pharmaceuticals?

Industrial chemicals?

???

Albert Channel: source of our drinking water

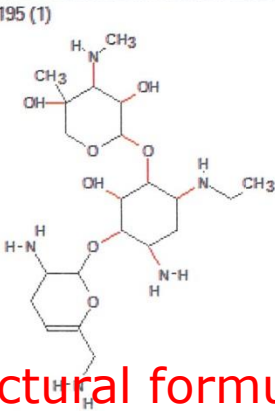


Screening surface water

Metformin	Antidiabeticum	Oxilofrine	Amphetamine analogue
Sulpiride	Antipsychotic drug	Sotalol	Beta blocker
Tramadol	Opioid analgesic	280,21/7,5	
Butetamate	Bronchodilator	Carbamazepine	Antiepilepticum
Flecainide	Antiarrhythmicum	3,4-dimethoxyphenethylamine	Neurotransmitter
192,16/3,5		Eprosartan	Angiotensin receptor blocker
Thymopentin	Immunostimulant	476,31/10,5	
Celiprolol	Beta blocker	Viquidil	Antithrombotic drug
Venlafaxine	Antidepressant	Amylocaine	Local anesthetic
Ciclacillin	Antibiotic	Oxibendazole	Veterinary drug
Telmisartan	Angiotensin receptor blocker	Zearalenone	Mycotoxine
Benzoylcegonine	Metabolite of cocaine	Carbendazim	Herbicide
Etilefrine	Antihypotensive cardiac stimulant	Flufenacet	Herbicide
Amisulpride	Antipsychotic	Pethidine	Opioid analgesic
236,19/5,0		Quinidine	Antiarrhythmicum
Cyclopentamine	Vasoconstrictor	Metoprolol	Beta blocker
Thiabendazole	Fungicide	Quinine	Antipyrethroid drug
Valsartan	Angiotensin receptor blocker	Cetobemidone	Opioid analgesic
Lamotrigine	Anticonvulsant		

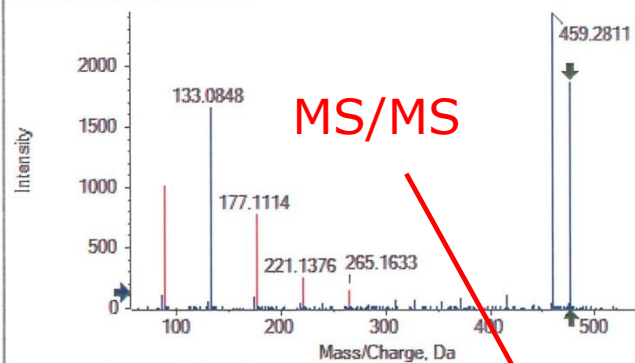
10567 spectra visible

C	N
O	P
S	F
Cl	Br
I	Na
K	Ca



Structural formula

Spectrum from IDA 140113.wiff (sampl...TOF MS² (50 - 1000) from 10.415 min
Precursor: 476.3 Da, CE: 30.0

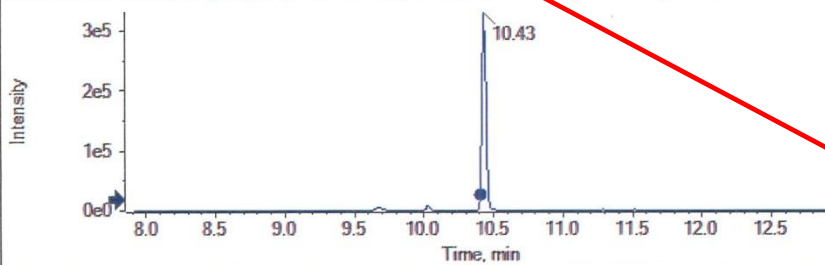


MS/MS

Mass/Charge	Intensity (Assign	Error (Da)
89.0590	41.58	<input type="checkbox"/>	
133.0848	67.91	<input checked="" type="checkbox"/>	0.001
177.1114	31.68	<input type="checkbox"/>	
221.1376	10.43	<input type="checkbox"/>	
265.1633	6.26	<input type="checkbox"/>	
459.2811	100.00	<input checked="" type="checkbox"/>	0.000
476.3076	76.49	<input checked="" type="checkbox"/>	0.000

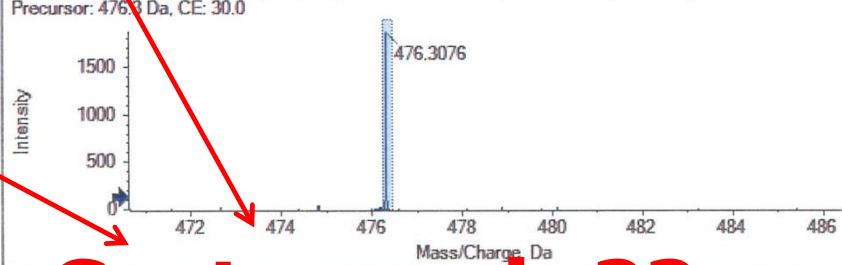
Matches: 3 of 7 peaks, 73.1% of total intensity

XIC from IDA 140113.wiff (sample 1) - IDA 140113, ...iment 1, +TOF MS (101 - 1000): 476.31 +/- 0.05 Da



Molecular formula

Spectrum from IDA 140113.wiff (sample 1) - IDA 14...eriment 5, +TOF MS² (50 - 1000) from 10.415 min
Precursor: 476.3 Da, CE: 30.0



Certomycin??

Find Any Find

Hit	Formula	m/z	RDB	ppm	MS Rank	MSMS ppm	MSMS Rank	Found
1	C21H41N5O7	476.3079	4.0	-0.8	3	2.1...	1	NA!
2	C16H42N9O5Cl	476.3070	0.0	1.0	5	2.7...	2	NA!
3	C24H46N3O2SCl	476.3072	3.0	0.6	1	8.6...	7	NA!
4	C22H37N9O3	476.3092	9.0	-3.6	7	4.8...	3	NA!
5	C24H45N6S	476.3040	3.0	7.3	11	7.4...	4	NA!
6	C32H42NCl	476.3079	12.0	-0.7	2	7.5...	14	NA!
7	C21H46N7Br	476.3071	2.0	0.9	4	2.6...	12	NA!

MS Details MSMS Details

Isotope cluster details Charge +1

Peak Use	m/z	% Intensity	Width
0 <input checked="" type="checkbox"/>	476.3075	100.0	0.100

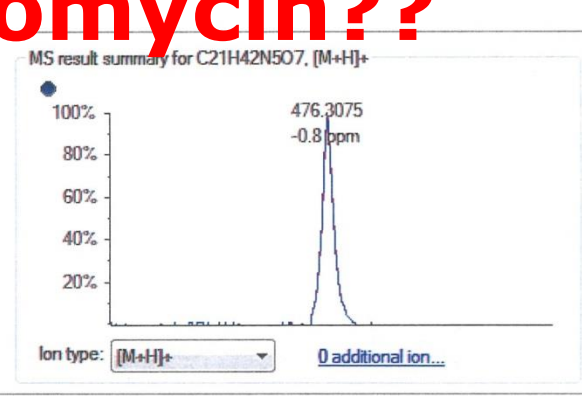
Elements from

Elements to C50 H200 N10 O10 S5 Cl10 Br5

Mass tolerance (ppm) 10

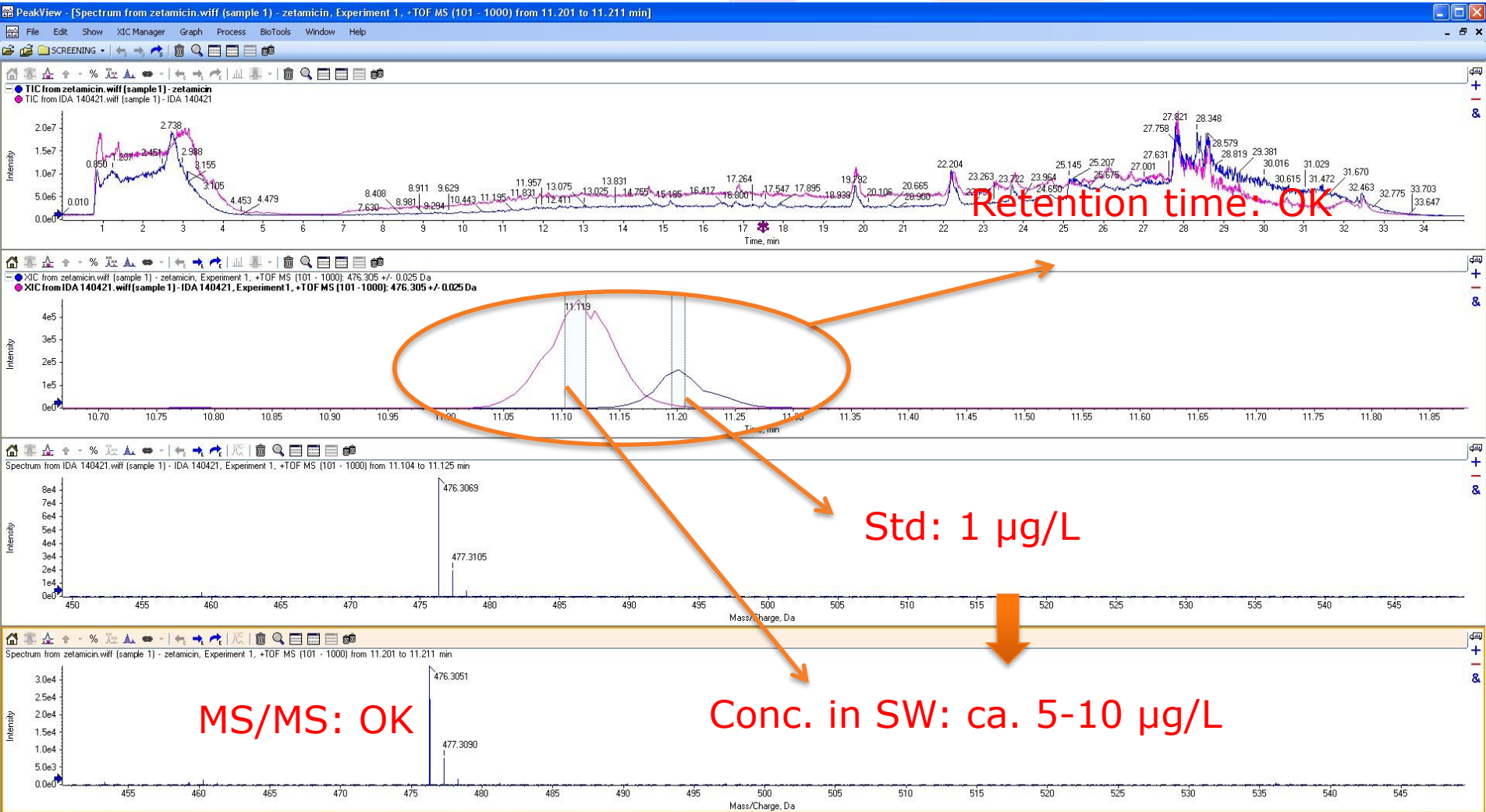
Intensity tolerance (%) 10

#C/#heteroatoms greater than 0

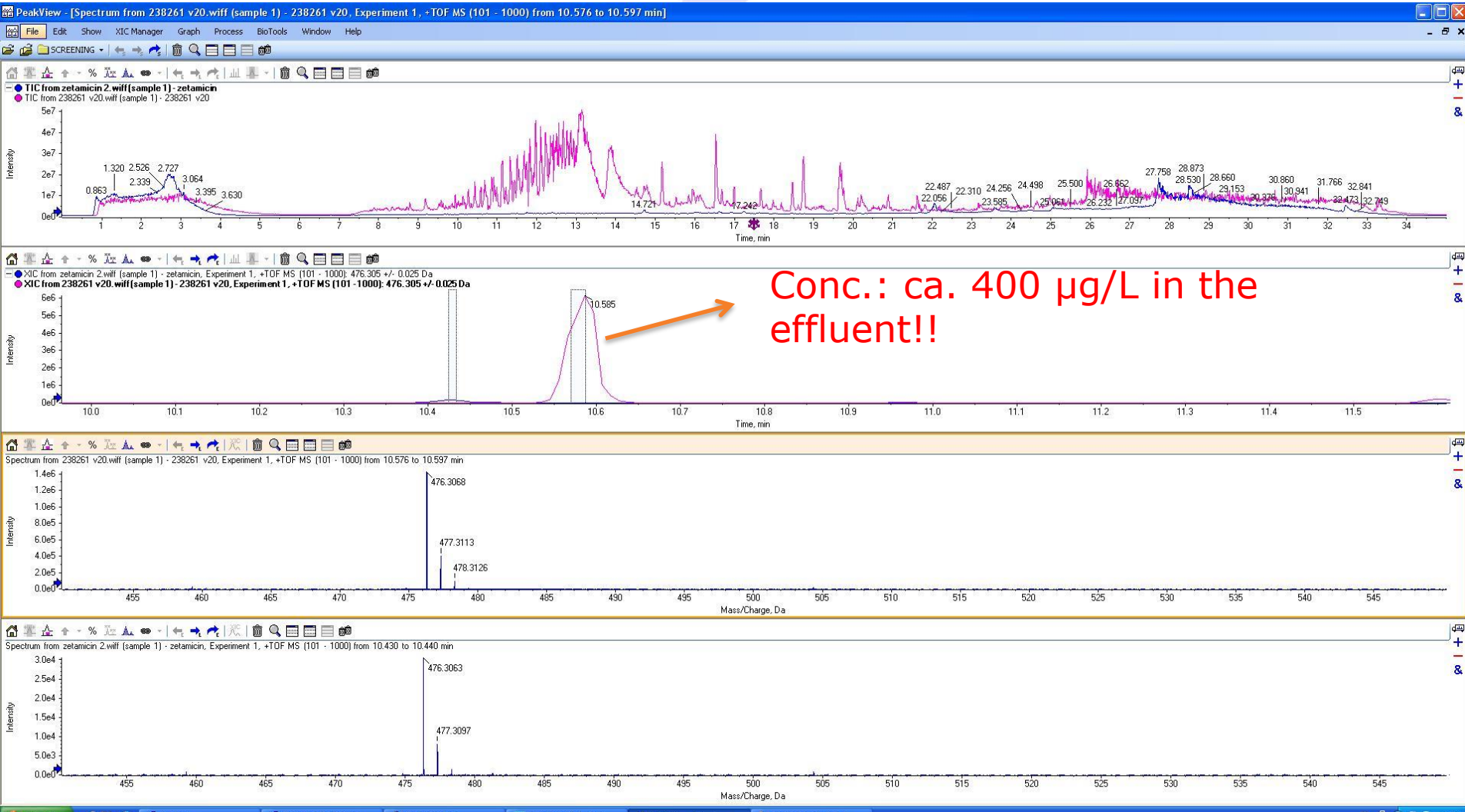


BUT:

- Compound is not commercially available in Belgium
- Certomycine is not medically applied in Belgium
- Hence: wrong conclusion...?
- We found the product in Italy and injected it on our instrument...



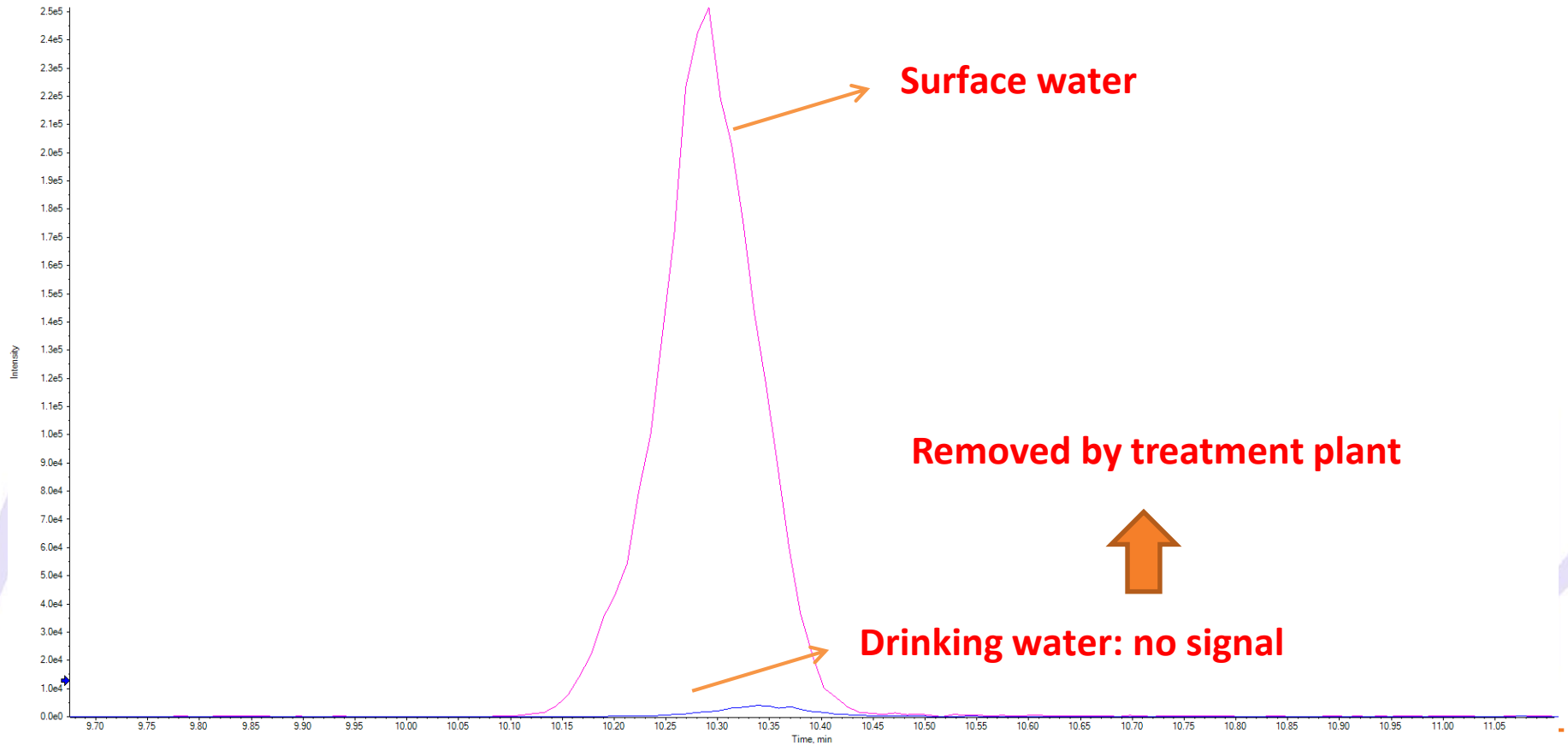
Veal butchery effluent?



Conc.: ca. 400 µg/L in the effluent!!

Status drinking water??

● XIC from N2PST3UIT 140722.wiff (sample 1) - N2PST3UIT 140722, Experiment 1, +TOF MS (101 - 1000): 476.310 +/- 0.005 Da
● XIC from IDA 140717.wiff (sample 1) - IDA 140717, Experiment 1, +TOF MS (101 - 1000): 476.310 +/- 0.005 Da



Besluit

- Screening is very important to actively searching for pollutants in surface and drinking water.
- Screening can help in finding sources of pollution.
- More information: www.water-link-laboratory.com