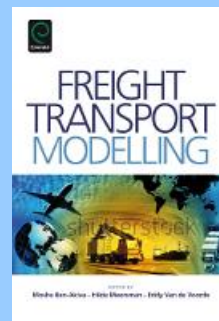

Information on: [Department of Transport and Regional Economics](#) / [Research Centre Freight and Passenger Transport – Steunpunt Goederen- en Personenvervoer](#)

Dear Ms,
Dear Sir,

From the [Department of Transport and Regional Economics](#) of the University of Antwerp, following **new book publications** are available:

- Hilde Meersman and Eddy Van de Voorde, together with Moshe Ben Akiva (MIT), edited a new book on **Freight Transport Modelling**. The book is complementary to Recent Developments in Transport Modelling - Lessons for the Freight Sector (2008), and provides fully new insights. It addresses the need to develop new freight transport models and scientific tools to counter internal and external economic impacts, and delivers theoretical and empirical input on three levels: global, regional and local (urban). The book presents insightful contributions from respected international experts in transport economics and freight modeling. Full information and online purchasing are available through the [book's web page](#).
- The new and fifth edition of the **Handbook on 'Transport Economics'** by Gust Blauwens and Eddy Van de Voorde, together with Peter De Baere, is now available for purchase. The book contains updated applications of industrial-economic transport management techniques, aggregate demand and supply analysis and transport policy foundations and measures. More information on content and online purchasing are available through the [book's web page](#).
- Thierry Vanellander, together with Céline Van Nieuwhuyse, had a paper published on "**Port of Antwerp: Deurganckdock Lock**", in the COST Action TU1001 2013 Discussion Series volume edited by Athena Roumboutsos, Sheila Farrell, Champika Liyanage and Rosário Macário, Part



II: Case Studies, pp. 154-160. The full version of the Case Studies Discussion volume is [available for download](#). Furthermore, the COST Action also had a volume published on Country Profiles, which is equally [available for download](#).



Other Department book publications can be found [online](#).

Tom Pauwels, Christa Sys, Eddy Van de Voorde and Thierry Vanelslander carried out a mobility analysis in the framework of the project of the **second railway connection of the port of Antwerp**. Four alternative trajectories have been assessed on the basis of a qualitative analysis. The report can be found [online](#).



For other **publications** by Department members, please check the Department's [academic bibliography](#). For an overview of the research projects currently going on at the Department, and for upcoming deliverables, please have a look at the Department's [research project pages](#).

Following **lectures and conference presentations** have recently been given by Department members:

- On 27 June 2013: *'The societal benefits of co-operation between adjacent seaport authorities'* by Joost Hintjens at 2nd Smart Port Poster Session, Rotterdam
- On 26-29 June 2013: *'Is there a role for rail in urban freight distribution?'* by Katrien De Langhe at ELA Doctorate Workshop, Schindellegi
- On 26-28 June 2013: *'Airlines and forwarders: a love/hate relationship?'* by Franziska Kupfer, *'Balance between Cargo and Passenger Activities at an Airport: A Synthesis of Literature'* by



Els Struyf, 'The Cost Structure of the Integrated Air Freight Business: An Updated Analysis' by Evy Onghena at ATRS 2013 Annual Conference, Bergamo

- On 23-24 June 2013: Ann Verhetsel presented the results of the Antwerp research within the COST Action TU 1002 - "Accessibility instruments for planning practice in Europe", Krakow, Poland

- On 17-19 June 2013: 'Cost modeling and simulation of last-mile characteristics in an innovative B2C supply chain environment with implications on urban areas and cities' by Roel Gevaers, Eddy Van de Voorde and Thierry Vanelander at City Logistics Conference 2013, Bali, Indonesia

- On 16-18 June 2013: 'Location of logistics companies: measuring the impact of accessibility by discrete choice modeling (in Flanders - Belgium)' by Ann Verhetsel, Roselinde Kessels, Nele Blomme, Jeroen Cant en Peter Goos, 'The accessibility of food: examining food deserts in Flanders' by Jeroen Cant and Ann Verhetsel at NECTAR 2013 Conference, Sao Miguel, Azores

- On 13-14 June 2013: 'Port Pricing' by Thierry Vanelander, 'Modeling the port calling process' by Edwin van Hassel, and 'Concentration in the maritime container business' and 'The impact of 18.000 TEU vessels on seaports' by Christa Sys at University of the Aegean STT CAMP 'Shipping and Transport Markets and Business Perspectives', Chios

- On 13 June 2013: 'The trends in European Shipping and Logistics' by Joost Hintjens at APEC training seminar

- On 10 June 2013: 'Flanders Port Area: the best way to reach 500,000,000 customers' by Thierry Vanelander at Flanders Port Area meeting with Hong Kong Logistics Council Delegation, Brussels

- On 30 and 31 May 2013: 'Consolidation Hubs and Freight Villages' by Thierry Vanelander at the EU-U.S. Transportation Research Symposium City Logistics, Washington DC

- On 30-31 May 2013: 'Will strategic alliances in the container liner shipping industry survive?' by Christa Sys, 'Principal component analysis as a tool to rank ports and track their



City Logistics Bali 2013



relative evolution' by Joost Hintjens and Thierry Vanelander, 'How to determine the modal split in a port area. The case of the port of Ghent' by Tom Pauwels, Eddy Van de Voorde and Thierry Vanelander, 'Delay alarm level forecasting in Container Terminals' by Claudia Pani and Thierry Vanelander, 'Urban Freight data collection' by Katrien De Langhe, Roel Gevaers and Christa Sys, 'The Airport Choice for Scheduled Freighter Operations in Europe - Conclusions from a Latent Class Model' by Franziska Kupfer, 'HOSPI MOSPI, or why we should focus on nurses in comparative studies on the relationship between urban form and travel patterns' by Thomas Vanoutrive ([view research summary picture](#)), 'Designing a park and ride scheme : location and public transport mode' by Toon Zijlstra, Thomas Vanoutrive and Ann Verhetsel at BIVEC Transport Research Day 2013, Luxemburg

- On 28-31 May 2013: 'Successful development and implementation of transport policy innovations' by Raimonds Aronietis at Baltic Maritime Forum, Swetlogorsk
- On 16 May 2013,: Christa Sys moderated the launch event of the VEA youth committee on the theme 'Expedition, is there a future?' in Antwerp ([view pictures](#) - [newsletter](#))
- On 6 May 2013: 'Vessels arrivals uncertainty in Container Terminals – Different approaches based on Machine Learning Algorithms' by Department PhD fellow Claudia Pani during a doctoral seminar, Antwerp
- On 5 to 8 May 2013: 'Towards a New Industrial Policy? The Case of Subregional Development in Flanders (Belgium)', by Ties Vanthillo, Ann Verhetsel and Thierry Vanelander at Regional Studies Association, Tampere
- On 15 to 19 April 2013: 'Rail freight transport:scenarios for market development in Europe' by Christa Sys, 'Economic analysis of infrastructure projects through CBA' by Tom Pauwels at TransportNET - Lloyd's Register Rail Antwerp Rail School, Antwerp



Further details on the conferences where members contributed are available on the [Department's website](#). Requests for copies

of the various presentations should be addressed to the organizers, as publishers of the respective proceedings.

Department members have given a series of **press interviews** during the latest months. Full details, and related textual, audio and video material is available through [the Department's media page](#).

Thierry Vanelslander got appointed **member of the Editorial Board of 'Tijdschrift Vervoerswetenschap'**. Editor-in-Chief of the journal is Gerard De Jong (University of Leeds).

Christa Sys was awarded the General Manager **Fernand Suykens Prize for Port Studies for her doctoral research**. The prize will be awarded by the Section of Technical Sciences of the Royal Academy for Overseas Sciences on October 3th, 2013. A summary of Christa's doctoral work can be found here in [Dutch](#) and in [English](#).

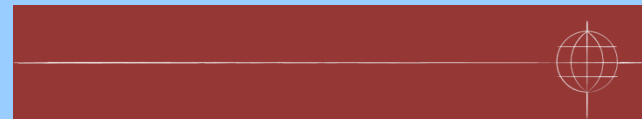
Christa was also nominated for the BIVC 2013 Transport Research Day prize with her paper on 'Will strategic alliances in the container liner shipping industry survive'.

Roel Gevaers was awarded the '**Outstanding paper award**' with the joint paper with Eddy Van de Voorde and Thierry Vanelslander on 'Cost modeling and simulation of last-mile characteristics in an innovative B2C supply chain environment with implications on urban areas and cities' presented at the City Logistics Conference 2013, Bali, Indonesia.

Thierry Vanelslander also got nominated **member of the Scientific Board** of the Florence School of Regulation Transport Area.

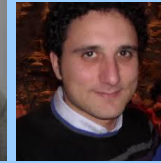
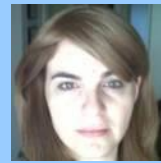
The Department hosted following **PhD defenses**:

- [Feliciana Monteiro](#) on 1 July 2013 on 'Productivity in the



Container Port Business – Focus on the Mediterranean Range’, at University of Antwerp, under supervision of Hilde Meersman and Eddy Van de Voorde

- Raimonds Aronietis on 27 June 2013 on ‘Successful Development and Implementation of Transport Policy Innovations – Tackling Congestion on Port-Hinterland Links’ at University of Antwerp, under supervision of Eddy Van de Voorde and Thierry Vanelslander
- Cosimo Lisi on 11 June 2013 on ‘From waste to reusable raw material: the transport optimization within the recycling process of glass and iron’, at Universita’ degli studi di Bari Aldo Moro, Bari, Italy, under supervision of Eddy Van de Voorde and Marisa Argene Valleri, as a double PhD.



Following **visiting researchers** had a stay at the Department for joint research:

- Elisabetta Venezia (University of Bari) from 10 June till 5 July 2013
- Trevor Heaver (University of British Columbia) from 22 April till 3 May 2013
- Claudia Pani (University of Cagliari) from 1 March till 31 August 2013
- Florent Laroche (University of Lyon) from 4 February till 30 April 2013



On 10-11 June, 2012, Christa Sys participated at the 6th **RETROFIT General Assembly** (GA6) meeting in Gdańsk (Poland). The GA6 was held at the Stocznia Gdąnsk S.A., a large shipyard in the city of Gdańsk. After intensive work, the first results of the aggregated model developed by UA were discussed. Next to it, the consortium discussed the validation of other models involved.

At the coming EUROPORT exhibition in Rotterdam (The Netherlands), the research projects RETROFIT and GRIP will join together for a midterm conference (free of costs) on Thursday 7th November 2013. Both projects are involved with green technologies for existing ships. The programme of the conference



consists of four themes:

- Green Technologies
- Voyage Simulation and Energy Consumption
- The Retrofit Process
- Regulatory Framework Developments

Please allocate this event in your agenda and follow the information about the programme and the speakers on the RETROFIT and GRIP websites. Contact CMTI (www.cmti.nl | info@cmti.nl) for more information or if you want to be invited.

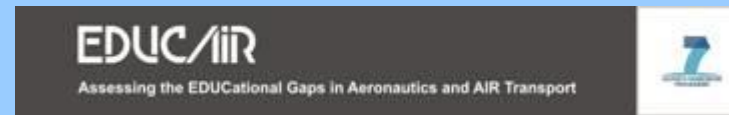
On June 19th, 2013, the EDUCAIR consortium hosted the **EDUCAIR Project Final Seminar**. This seminar presented and discussed the final results and outcomes of the project.

EDUCAIR analyzed whether there are mismatches - or competence gaps - between the competence needs (demand) in the air transport and aeronautics sector and the offer (supply) provided through education. The project resulted in the identification of some gaps while other gaps could not be confirmed. The final deliverable will soon be available on the [project website](#).

The **European COST Action TU1001**, to which Thierry Vanellander is vice-chair, had a presentation at the **International Transport Forum** Annual Summit in Leipzig. Topic of the summit was 'Funding Transport'. Christa Sys represented the Department at the event.

The Department hosted following **guest speakers** during the last three months:

- On 14 May 2013: Eleftherios Iakovou (Aristotle University of Thessaloniki) on 'Sustainable Global Supply Chain Networks: An Optimization-based Methodological Framework'
- On 23 April 2013: Trevor Heaver (University of British Columbia) with a guest lecture for Bachelor students of Applied Economics on 'What sort of (logistics) relationship will you want?'
- On 22 April 2013: Michael Ford (Saint Joseph's University



Philadelphia/BDP International) on 'Creating a sustainable supply chain: Are you really green?'

- On 22 April 2013: Florent Laroche (Laboratoire d'Economie des Transports - Lyon / TransportNET) with a doctoral seminar on 'Traffic forecasting and saturation modelling of railway lines, the case of the High Speed Line Paris-Lyon'



As part of the courses on 'Company Location', Department students paid an **excursion** to Paris on 24 April 2013, guided by Ann Verhetsel.

Students of the course 'Maritime and Port Economics' paid a visit to **Delft University of Technology and IHC Merwede** on 26 April 2013, where they got presentations and field visits on the topic of shipbuilding.



The Department on behalf of the University of Antwerp contributed to the series '**Behind the Science**' of **National Geographic**, for the session on 'Eco-Economics'. The full session can be found [here](#). The series also won the EUPRIO Award 2013 of the best higher education commercial in Europe.



The Department contributed to the **Interdisciplinary summer school CityLab** - 'Naar een duurzame Grootstad'. The school was a five-day interactive learning module that dealt with urban sociology, social and economic geography, transport and urban economics, ecology, urban planning, governance science and urban history. View [information](#) and [pictures](#).

Eddy Van de Voorde is chairman of the exam commission on professional aptitude at ITLB (**Institute for Road Transport and Logistics Belgium**). On 24 May 2013, the commission convened, as they do twice a year.



The Department hosted the **Antwerp Rail School** from 15 till 19 April 2013. 29 participants joined a full week of intensive sessions and debates on rail-related issues, as well as a visit to the instruction and innovation centre of De Lijn. [View pictures](#) of the course and visit.



On 6 May 2013, the Department hosted the **Annual Meeting of Imarest Benelux Branch**.



The [Research Centre on Freight and passenger flows](#) published **four new policy supporting papers**. The reports are available in Dutch, but English spin-offs are to be found in the Research Centre's [publication section](#).

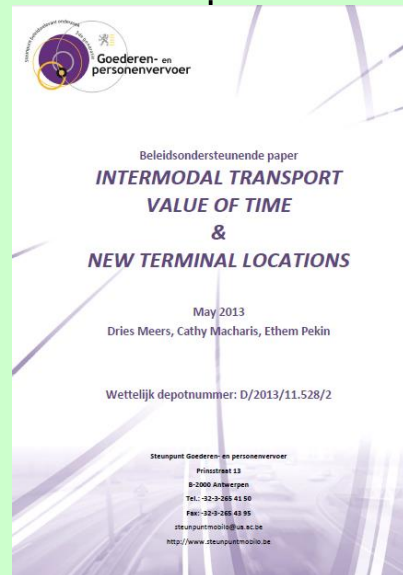
Het [Steunpunt Goederen- en Personenvervoer](#) publiceerde **vier nieuwe beleidsondersteunende papers**. De rapporten zijn beschikbaar in het Nederlands, maar Engelstalige spin-offs zijn te vinden in de [publicatiesectie](#) van het Steunpunt.

The latest policy paper that was released is titled paper '**Intermodal transport: value of time & new terminal locations**' and is written by Dries Meers, Cathy Macharis and Ethem Pekin. As the title indicates, this paper focuses on two topics related to intermodal transport in Flanders. First, the importance of transport time in intermodal transport is discussed. By using the LAMBIT-model, the possible impact of

De meest recente beleidsondersteunende paper '**Intermodal transport: value of time & new terminal locations**' is van de hand van Dries Meers, Cathy Macharis en Ethem Pekin. Zoals de titel al aangeeft bestaat deze paper uit twee onderdelen. In een eerste deel wordt het belang van transporttijd voor intermodaal transport geschetst. Met behulp van het LAMBIT-model wordt nagegaan welke impact een toenemende wegcongestie kan

increased road congestion on the use of intermodal transport is analyzed. In the second part of the study, the optimal network configuration for intermodal terminals in Flanders is calculated using an optimization module. The selected theoretical terminal locations indicate the locations with the highest possible transshipment volumes, which can be transported cheaper by intermodal transport than by road-only transport, without competing with the existing intermodal terminals. The paper is available [here](#).

hebben op het gebruik van intermodaal transport in Vlaanderen. In het tweede deel van de studie wordt de optimale netwerkconfiguratie voor intermodale terminals in Vlaanderen berekend aan de hand van een optimalisatiemodule. Deze theoretische terminallocaties geven aan waar zich de grootste potentiële volumes bevinden die op een goedkopere manier intermodaal getransporteerd kunnen worden, zonder te concurreren met de bestaande intermodale terminals. De paper is [hier](#) beschikbaar.

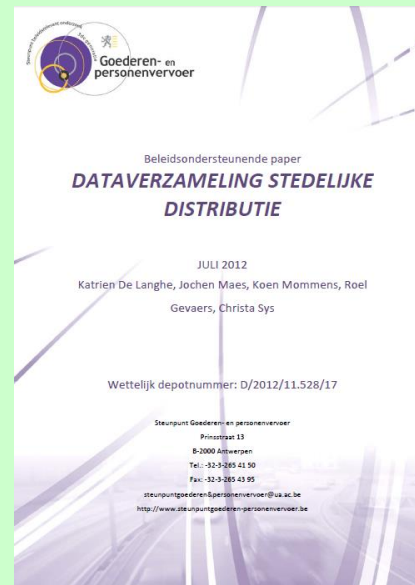


The second and third policy supporting papers that were released focus on data collection for urban freight distribution. A recurring problem is the lack of data on urban freight movements. The first policy supporting paper is written by Katrien De Langhe, Jochen Maes, Koen Mommens, Roel Gevaers

De tweede en derde vrijgegeven beleidsondersteunende papers focussen op dataverzameling voor stedelijk vrachtvervoer. Een terugkomend probleem is immers het gebrek aan data over de stedelijke vrachtbewegingen. De eerste beleidsondersteunende paper is van de hand van Katrien De Langhe, Jochen Maes, Koen

and Christa Sys, about '**Data collection urban distribution**'. Here, two questions were addressed, namely what data are already available and which data should be collected. The paper is available [here](#). The second policy supporting paper, '**Data collection urban distribution: urban indicators and data collection methods**' of Katrien De Langhe, Roel Gevaers, Christa Sys and Thierry Vanelslander, goes a step further. This paper gives an overview of the commonly used indicators and data collection methods. Prior was an analysis of data availability conducted. Here, attention was also given to the efforts regarding data collection in some neighboring countries. The second paper can be downloaded [here](#).

Mommens, Roel Gevaers en Christa Sys, over '**Dataverzameling stedelijke distributie**'. Hier wordt stilgestaan bij twee vragen, nl. welke data reeds beschikbaar zijn en welke data nog verzameld moeten worden. De paper is [hier](#) beschikbaar. De tweede beleidsondersteunende paper, '**Dataverzameling stedelijke distributie: stedelijke indicatoren en dataverzamelmethodes**' van Katrien De Langhe, Roel Gevaers, Christa Sys en Thierry Vanelslander, gaat een stap verder. Deze beleidsondersteunende paper onderzoekt de algemeen gebruikte stedelijke indicatoren en dataverzamelmethodes. Voorafgaandelijk werd een analyse van de databeschikbaarheid uitgevoerd. Hier werd tevens aandacht gegeven aan de inspanningen m.b.t. dataverzameling in enkele buurlanden. De tweede paper kan [hier](#) gedownload worden.

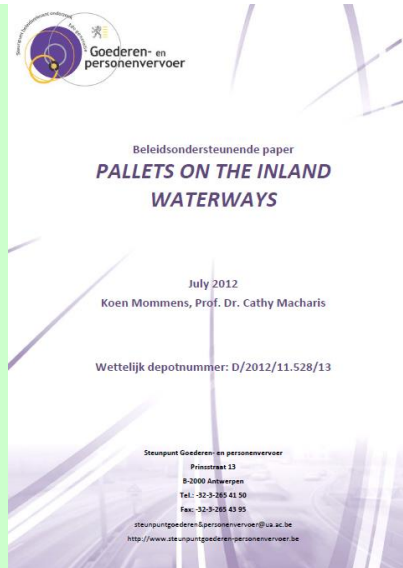


The first released policy-supporting paper '**Pallets on the inland waterways**' is written by Koen Mommens and Cathy Macharis. This policy paper contains a feasibility analysis for a

De eerste vrijgegeven beleidsondersteunende paper '**Pallets on the inland waterways**' was van de hand van Koen Mommens en Cathy Macharis. Deze beleidspaper bevat de

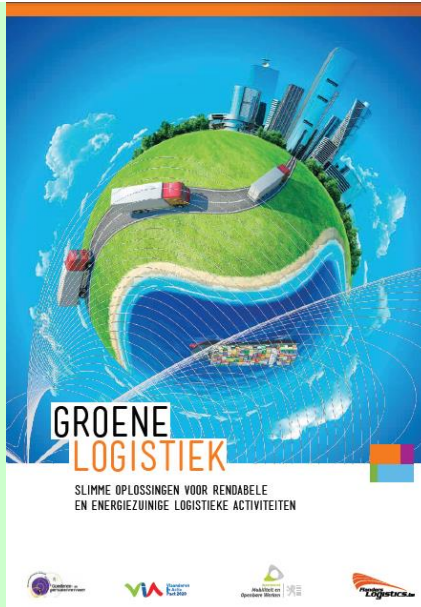
modal shift of palletized goods to the inland waterways. Therefore, a location analysis model (LAMBTOP) was created, which enables to determine the optimal hub locations, as well as their optimal number, their turnover, and the economic- and CO₂-savings which can be obtained by their implementation. An analysis was performed on the bases of ADSEI Transport data 2010. Two main findings arise from this analysis. The optimal hub locations are the first important result. The private and public sector need this information to turn their modal shift concept to a success. Furthermore, it has to be noticed that the most optimal hub locations are mostly situated in or near of Belgian cities. By consequence, the concept can be combined with a concept of sustainable city distribution. The second major finding is that the modal shift of palletized goods is an economic realizable concept. Additional cost savings are made when including external costs or by broadening the geographical scope to the neighbouring countries. The paper is available [here](#).

haalbaarheidsanalyse voor de modal shift van gepalletiseerde goederen naar de binnenvaart. Hiervoor werd een locatie-analyse-model ontwikkeld (LAMBTOP), dat het mogelijk maakt om de optimale overslaglocaties te berekenen, alsook hun potentiële turnover qua volume. Tot slot worden ook de kostenbesparingen en besparingen in CO₂-emissies bij implementatie in rekening gebracht. De analyse vond plaats op basis van de nationale ADSEI transport data 2010. Twee belangrijke uitkomsten kunnen uit deze beleidspaper getrokken worden. De optimale overslaglocaties zelf zijn de eerste belangrijke uitkomst. Zowel de publieke als private sector hebben deze informatie nodig om het concept van pallets via de waterweg te realiseren. Er dient daarbij ook opgemerkt te worden dat veel van deze locaties zich in of nabij stedelijke kernen bevinden, hetgeen de mogelijkheid zou bieden om het concept te integreren in een project van duurzame stadsbevoorrading. De tweede uitkomst is dat een modal shift van pallets naar de binnenvaart economisch haalbaar is. Bijkomende kostenbesparingen kunnen echter gemaakt worden door het verruimen van het concept naar de ons omringende landen. De paper is [hier](#) beschikbaar.



With the Department of Mobility and Public Works, the Research Centre Mobilo worked out a **roadmap for green logistics**. Twelve actions in order to reduce the ecological footprint of the supply chain were developed. This roadmap aims to inspire companies and logistics operators, trucking companies, shippers and forwarders. The user manual is part of the action plan on sustainable logistics of [Flanders Logistics](#). Read [more](#).

Het Steunpunt Mobilo werkte samen met het Departement Mobiliteit en Openbare Werken, Afdeling Haven- en Waterbeleid een **roadmap groene logistiek** uit. Twaalf acties met oog op vermindering van de ecologische voetdruk van de logistieke keten werden uitgewerkt. Deze roadmap dient ter inspiratie voor bedrijven en logistieke actoren, zoals transporteurs, verladers en expediteurs. Deze gebruiksvriendelijke handleiding kadert binnen de acties rond duurzame logistiek van [Flanders Logistics](#). Download [hier](#)



Department of Transport and Regional Economics
Faculty of Applied Economics
University of Antwerp
CST
Prinsstraat 13
B-2000 Antwerpen
Belgium
T: -32-3-265 40 44

F: -32-3-265 43 95

<http://www.ua.ac.be/tpr>



DISCLAIMER:

This e-mail and any attachments thereto may contain information which is confidential and/or protected by intellectual property rights and are intended for the sole use of the recipient(s) named above. Any use of the information contained herein (including, but not limited to, total or partial reproduction, communication or distribution in any form) by persons other than the designated recipient(s) is prohibited. If you have received this e-mail in error, please notify the sender by replying to this e-mail with the message 'REMOVE'. Thank you for your co-operation.