

CSB  
**WORKING PAPER**

centreforsocialpolicy.eu

September 2012

No 12 / 08

**Are new social risk  
expenditures  
crowding out the  
old?**

*Leen Meeusen and Annemie Nys*



University of Antwerp  
Herman Deleeck Centre for Social Policy  
Sint-Jacobstraat 2  
B - 2000 Antwerp  
fax +32(0)3 265 57 98



# Are new social risk expenditures crowding out the old?

**Leen Meeusen and Annemie Nys**

Working Paper No. 12 / 08

September 2012

## **ABSTRACT**

This paper contributes to a discussion on the extent to which the focus of social spending has been shifted from 'old' to 'new' social risks. In order to clarify Cantillon's claim that the transition to a social investment state has influenced poverty trends (Cantillon, 2011), Vandenbroucke and Vleminckx (2011) analyzed public social cash expenditures. We build on this work by providing more detailed data, i.e. the inclusion of private expenditures for a larger group of countries. This paper provides country files containing both public and private expenditure variables that present the evolution of social spending in 21 EU member states covering the period 1985-2007. For each country a distinction has been made between three categories of 'old' expenditures and six categories of 'new' expenditures, with 'old' expenditures representing the core tasks of the welfare state and 'new' expenditures representing new programs aimed at social risks inherent to a post-industrial society. These data allow us to formulate an answer to the following question: 'Have we witnessed a significant shift in budgetary resources from 'old' to 'new' programs that might explain the disappointing poverty trends witnessed in various EU member states?'

Using data from the OECD's Social Expenditure Statistics Detailed Database (SOCX) and the OECD's Education Database, we conclude that although growth of 'new' expenditures has been larger than the growth of 'old' ones, we are not able to identify a substantial shift in absolute figures. Since health and retirement spending remain the main bulk in social expenditures (due to their inflexible nature), we narrowed the analysis and focused only on 'working age' benefits. Doing so, we still are not able to identify a clear pattern that reveals a shift in resources from 'old' to 'new' expenditures. Our conclusions are in line with previous studies.

**JEL classification:** I31 – Y10

**Keywords:** Social investment – old and new social risks – social expenditures – working age benefits

## **1. Introduction**

Several societal developments, such as the shift to a post-industrial labor market and changing family structures, have led to 'new' social risks. To meet the new needs that came with these changes, the traditional welfare state transformed to a new form of social welfare, namely a social investment state (Bonoli, 2006, 2007). This new welfare state is characterized by a shift from passive protection to empowerment and activation in order to ensure equal opportunities (Cantillon & Van Lancker, 2012). The focus of the social investment state is more on individual responsibility than on state responsibility. Unlike the traditional welfare state, it is no longer the community that is responsible for support under particular circumstances, but it is the individual's responsibility to use the opportunities being provided to ensure an active role in society (Taylor-Gooby, 2004). These individual opportunities, together with investment in human capital, indicate the belief in welfare through work (Cantillon & Van Lancker, 2012).

Cantillon (2011) identifies three features of the new welfare state: new social risks, a strong focus on investment in human capital and a strong service orientation. These new features raise the question whether a shift of resources from 'old' programs to 'new' programs took place which may be partly responsible for the disappointing poverty trends in some EU member states (Cantillon, 2011).

This working paper provides detailed information on the evolution of social expenditure which may contribute to a better understanding of a potential shift from old to new social risks. It builds on the analysis of Vandenbroucke & Vleminckx (2011) who explore expenditure data to identify cross-national differences in welfare state development. Whereas Vandenbroucke & Vleminckx take 13 EU member states and the US into consideration, this paper enlarges the group to 21 EU member states. Furthermore, it provides a more detailed classification of social expenditures and includes private expenditures.

This paper is organized as follows. In the first part we briefly discuss literature on the welfare state's recent shift towards a social investment state. The second and third part introduce the methodology and the relevant country files. Finally, we offer a concluding analysis.

## **2. The 'social investment state'**

Multiple interpretations exist of what can be understood by 'the social investment state'. Giddens (1998) identifies the social investment state as a shift away from traditional compensation towards activation. On the other hand, more nuanced interpretations, such as by Esping-Anderson

(2002), propose a more integrated vision on protection and investment as the foundations of the new welfare state.

The shift from the old redistributive welfare state to a social investment state however has been more difficult than expected and may at least in part be responsible for disappointing poverty trends. Cantillon (2011) identified the following contributory trends: rising employment has benefited workless households only marginally; poverty among the unemployed and workless households has increased; new work-related spending – which tends to be less pro-poor – has increased, while the generosity of ‘traditional’ ‘passive’ income support has declined. Vandenbroucke & Vleminckx (2011) discuss this analysis, by disentangling two underlying concepts that are deemed to explain disappointing poverty trends: resource competition and recommodification. Resource competition postulates that, given budgetary constraints, the shift in focus from ‘old’ to ‘new’ risks and from passive protection policies to active investment policies has moved resources away from ‘old’ programs that are relatively more redistributive to ‘new’ programs that are relatively less redistributive. Recommodification presumes that the emphasis on “making work pay”, which has been an essential component of the social investment strategy, justified – and thus contributed to – the retrenchment of traditional unemployment benefit programs which consequentially generated poverty.

### **3. A shift in resources from old to new programs?**

To verify whether a shift in budgetary efforts from old, more cash-oriented and compensating benefits to new social programs occurred, we analyzed data on social expenditure of the following EU member states: *Austria, Belgium, Czech Republic, Denmark, Estonia, Finland, France, Germany, Greece, Hungary, Ireland, Italy, Luxembourg, The Netherlands, Poland, Portugal, Slovakia, Slovenia, Spain, Sweden and the United Kingdom.*

The information is collected in country files, containing both public and private expenditure variables. We included private expenditure as countries rely to a very different degree on private forms of social protection systems. Furthermore, private is often less private than it seems. Private social spending is often state-regulated and encouraged or even enabled by tax expenditures. The SOCX database documents both, although the reporting of private expenditures appears to be far less systematic. As a consequence, social expenditures in countries that strongly rely on private social protection may be underestimated in the database (De Deken, 2012).

The different variables are constructed on the basis of the OECD’s Social Expenditure Statistics Detailed Data (SOCX) and the OECD’s Education

Database (03/2012). The classification of social expenditures is based on a distinction between 'old' and 'new' programs which is inspired by the distinction between 'old' and 'new' social risks, as formulated by Bonoli (2006). Although the welfare state was originally designed to cope with traditional social risks such as sickness, injury, old age, unemployment, etc., in the aftermath of the economic crises of the '70 it faced new social problems. Being low skilled, single parenthood, combining care with paid work and taking care for frail relatives had become new social risks that had to be incorporated in the tasks of the welfare state. Therefore, 'old' should not be interpreted as 'out of date' here; it means that these programs belong to the traditional core of welfare state tasks and were well established before the emergence of the post-industrial welfare state. 'New' on the other hand relates to social changes associated with the transition towards a post-industrial society (Taylor-Gooby, 2004). In this paper, we provide country data on *old programs*, including income protection and healthcare, and *new programs* including childcare, education, elderly care and leave systems for the period 1985-2007.

We defined the following categories of 'old' and 'new' welfare spending:

OLD	NEW
(1) 'OLD 1' Healthcare	(1) 'NEW 1' Parental leave
(2) 'OLD 2' Old age	(2) 'NEW 2' Elderly care
(3) 'OLD 3' Other benefits	(3) 'NEW 3' Childcare
	(4) 'NEW 4' Active labor market policies
	(5) 'NEW 5' Primary and secondary education
	(6) 'NEW 6' Tertiary education

Annex 1 provides a detailed overview of the programs included in the different spending categories. The country tables provide the average levels of the spending categories defined above as a percentage of GDP for the years 1985-1989, 1990-1994, 1995-1999, 2000-2004 and 2005-2007. For each spending category, a distinction is made between *public* and *private* expenditures. Public expenditures are presented on the first line, followed by private expenditures. The *total* is based on the sum of the public and private averages of the respective periods.

With regards to family allowances, one can interpret them both as a social investment, congenial to the other programs captured under 'new 3', or, alternatively, as a traditional welfare state program congenial to other cash benefits for working age people (De Deken, 2012). We provide two alternative classifications distinguished by a vertical line in the tables. In the first case family allowances are included in the working age cash benefits ('OLD 3'). In the second case they are included in the 'new' spending category *childcare* ('NEW 3').

Furthermore, the tables contain the employment and unemployment rates that may partly explain levels and evolutions in spending.

The following ratios were calculated:

Row A-K: public and private spending as percentage of GDP (average for period)

Row L-M: employment and unemployment rate (average for period)

Since changes in social spending can also be driven by demographic changes, additional steps in the analysis are indispensable. In order to exclude this demographic impact (as well as the impact of the unemployment level), we provide four additional indicators in row N-Q. These indicators take public and private spending into consideration and are expressed as indices against a baseline period.

- Spending on retirement pensions ('OLD2') divided by the number of people older than 64 years, compared with GDP/capita
- Spending on childcare and pre-primary education ('NEW3' excluding family allowances) divided by the number of children younger than 5, compared with GDP/capita
- Spending on active labor market policy (ALMP) ('NEW4') per unemployed person, compared with GDP/capita
- Spending on primary and secondary education ('NEW5') divided by the population from 5 to 19 years old, compared with GDP/capita

We express the value of these ratios for the years 1990-1994, 1995-1999, 2000-2004 and 2005-2007 as a % of the average value for the years 1985-1989 (=100). Since some countries lack data for the period 1985-1989, other baseline periods, namely 1995-1999 & 2000-2004, are used. These indices refer to deliberate efforts to invest in resources (or the willingness to disinvest) in specific functions of the welfare state; we call them 'budgetary effort indices'.

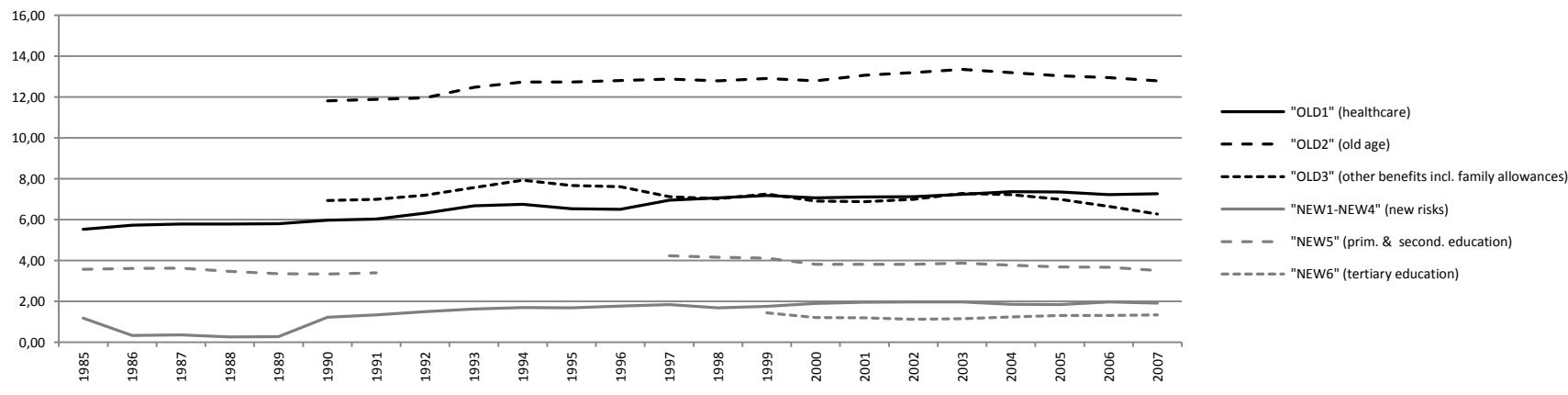
The last three columns of each table display percentage point changes in spending (% GDP).

- Average levels for the years 2005-2007 are compared with the average levels for the years 1985-1989.
- In case no data are available for the period 1985-1989, a different period for comparison (indicated in the table) is used.
- The percentage point change of the spending levels is displayed for '2000 vs. 1994'.
- The percentage point change of the spending levels is displayed for '2007 vs. 2004'.

The graphs present the evolution of total (public, private & voluntary) spending on 'old' and 'new' programs for each country, aggregating the four 'new' spending categories into one category. In the graphs, family allowances are included in 'working age benefits' (OLD 3).

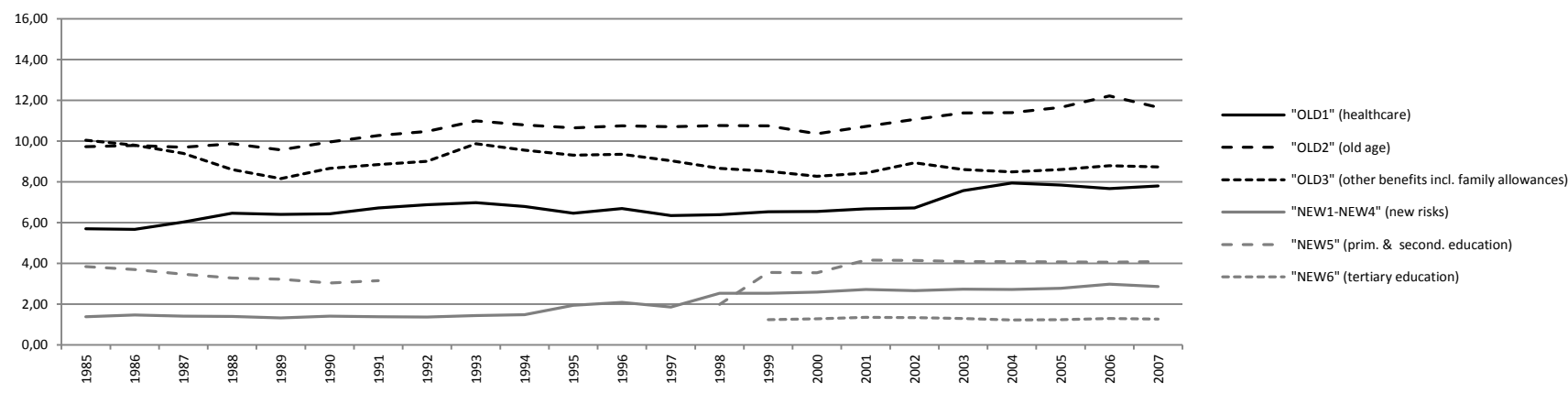
AT			1985-1989		1990-1994		1995-1999		2000-2004		2005-2007		ppt change ('05-'07) vs. ('85-'89)		ppt change '00-'94		ppt change '07-'04	
(a)	"OLD1" HEALTHCARE	Total Public	5,10		5,70		6,29		6,68		6,81		1,71		0,50		-0,03	
		Total Voluntary Private	0,63		0,66		0,56		0,50		0,47		-0,16		-0,20		-0,07	
		Total	5,73		6,36		6,85		7,18		7,28		1,55		0,30		-0,10	
(b)	"OLD2" OLD AGE	Total Public	11,41		11,77		12,38		12,58		12,40		0,99		-0,06		-0,39	
		Total Voluntary Private	0,48		0,41		0,45		0,55		0,53		0,05		0,13		-0,01	
		Total	11,89		12,18		12,83		13,13		12,93		1,04		0,07		-0,40	
(c)	"OLD3" OTHER BENEFITS + ALLOWANCES / OTHER BENEFITS	Total Public	6,23	4,18	6,20	4,35	6,32	4,48	6,12	4,05	5,80	3,71	-0,43	-0,47	-0,91	-0,71	-0,92	-0,64
		Total Mandatory Private	1,17	1,17	1,13	1,13	1,02	1,02	0,94	0,94	0,84	0,84	-0,33	-0,33	-0,12	-0,12	-0,04	-0,04
		Total	7,40	5,35	7,33	5,48	7,34	5,50	7,06	4,99	6,64	4,55	-0,76	-0,80	-1,03	-0,83	-0,96	-0,68
(d)	"NEW1" PARENTAL LEAVE	Total Public	0,38		0,57		0,52		0,32		0,14		-0,24		-0,32		-0,04	
(e)	"NEW2" ELDERLY CARE	Total Public	0,18		0,18		0,34		0,58		0,63		0,45		0,36		0,05	
(f)	"NEW3" CHILD CARE/ CHILD CARE + ALLOWANCES	Total Public	0,34	2,39	0,40	2,25	0,42	2,25	0,43	2,51	0,45	2,53	0,11	0,15	-0,02	-0,22	0,01	-0,27
(g)	"NEW4" ALMP	Total Public	0,30		0,34		0,47		0,61		0,70		0,4		0,19		0,06	
(h)	"NEW5" PRIMARY & SECONDARY EDUCATION	Total Public	3,53		3,37		4,17		3,82		3,62		0,09				-0,26	
(i)	"NEW6" TERTIARY EDUCATION	Total Public					1,44		1,19		1,32						0,10	
(j)		Total New 1-5	4,73	6,78	4,86	6,71	5,92	7,75	5,76	7,84	5,54	7,63	0,81	0,85				
(k)		Total Old And New (New6 Excluded)	29,75		30,73		32,94		33,13		32,39		2,64					
(l)		Total cash	0,72		0,70		0,69		0,67		0,66							
(m)		Total in kind																
(n)		Total not classified (voluntary)																
(o)		Employment Rate			68,44		68,11		68,39		70,07							
(p)		Unemployment Rate	3,44		3,63		4,05		4,11		4,78		1,34					
(q)		("Old2"/65+)/(Gdp/Cap)	100,00		97,24		100,11		101,05		92,82							
(r)		("New3"/<5)/(Gdp/Cap)	100,00	100,00	117,45	95,58	131,06	99,93	152,33	126,44	163,61	132,46						
(s)		("New4"/Un)/(Gdp/Cap)	100,00		101,61		122,44		157,42		150,64							
(t)		("New5"/5-19)/(Gdp/Cap)	100,00		96,75		130,91		120,92		124,73							

Austria: total social spending (public, private, voluntary), % GDP  
1985-2007, OECD SOCX



BE			1985-1989		1990-1994		1995-1999		2000-2004		2005-2007		ppt change ('05-'07) vs. ('85-'89)		ppt change '00-'94		ppt change '07-'04	
(a)	"OLD1" HEALTHCARE	Total Public	6,06		6,76		6,49		6,92		7,31		1,25		-0,24		-0,18	
		Total Voluntary Private	0,47		0,47		0,82		0,44		0,46		0,46		0,00		0,04	
		Total	6,06		6,76		6,49		7,36		7,77		1,71		-0,24		-0,14	
(b)	"OLD2" OLD AGE	Total Public	9,32		9,51		9,31		9,01		8,94		-0,38		-0,73		-0,14	
		Total Mandatory + Voluntary Private	0,42		0,99		1,41		1,98		2,91		2,49		0,29		0,39	
		Total	9,74		10,50		10,72		10,99		11,85		2,11		-0,44		0,25	
(c)	"OLD3" OTHER BENEFITS + ALLOWANCES / OTHER BENEFITS	Total Public	8,74	6,51	8,23	6,28	8,16	6,32	7,41	5,83	7,26	5,81	-1,48	-0,70	-1,11	-0,86	0,02	0,09
		Total Voluntary Private	0,47	0,47	0,96	0,96	0,82	0,82	1,12	1,12	1,45	1,45	0,98	0,98	-0,21	-0,21	0,23	0,23
		Total	9,21	6,98	9,19	7,24	8,98	7,14	8,53	6,95	8,71	7,26	-0,50	0,28	-1,32	-1,07	0,25	0,32
(d)	"NEW1" PARENTAL LEAVE	Total Public	0,07		0,17		0,16		0,18		0,18		0,11		0,00		0,00	
(e)	"NEW2" ELDERLY CARE	Total Public	0,01		0,01		0,37		0,49		0,58		0,42		0,08		0,08	
(f)	"NEW3" CHILD CARE/ CHILD CARE + ALLOWANCES	Total Public	0,12	2,35	0,13	2,08	0,45	2,29	0,90	2,49	0,95	2,41	0,83	0,04	0,68	0,44	0,01	-0,06
(g)	"NEW4" ALMP	Total Public	1,20		1,11		1,21		1,13		1,18		-0,02		0,00		0,17	
(h)	"NEW5" PRIMARY & SECONDARY EDUCATION	Total Public	3,51		3,10		3,56		4,01		4,08		0,57		0,00		0,00	
(i)	"NEW6" TERTIARY EDUCATION	Total Public	1,25		1,30		1,27		1,27		1,27		0,00		0,00		0,04	
(j)	TOTAL NEW 1-5		4,90	7,14	4,52	6,47	5,75	7,59	6,71	8,29	6,97	8,42	2,07	1,28				
(k)	TOTAL OLD and "NEW" (NEW6 excluded)		29,91		30,97		31,94		33,59		35,30		5,39					
(l)	Total cash																	
(m)	Total in kind																	
(n)	Total not classified (voluntary)																	
(o)	EMPLOYMENT RATE		52,87		55,71		57,15		60,00		60,97		8,1					
(p)	UNEMPLOYMENT RATE		11,21		10,82		11,71		7,56		8,05		-3,16					
(q)	("OLD2"/65+)/(GDP/CAP)		100,00		100,60		96,31		94,78		101,20							
(r)	("NEW3"/<5)/(GDP/CAP)		100,00	100,00	100,22	85,33	371,47	98,90	764,58	111,83	805,30	108,15						
(s)	("NEW4"/UN)/(GDP/CAP)		100,00		95,23		93,90		133,57		125,70							
(t)	("NEW5"/5-19)/(GDP/CAP)		100,00		88,74		86,10		126,37		136,25							

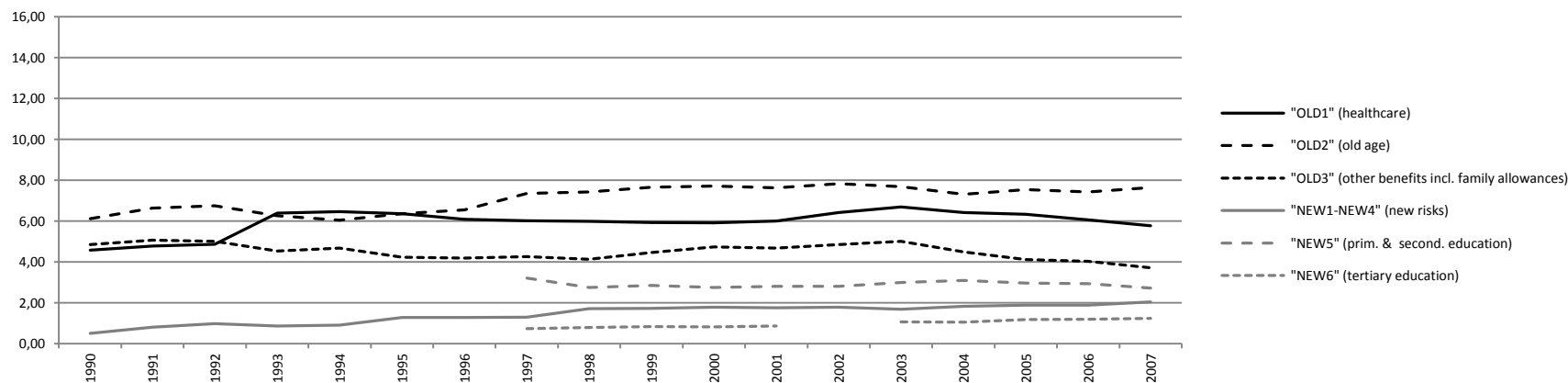
Belgium: total social expenditures (public, private, voluntary), %GDP  
1985-2007, OECD SOCX





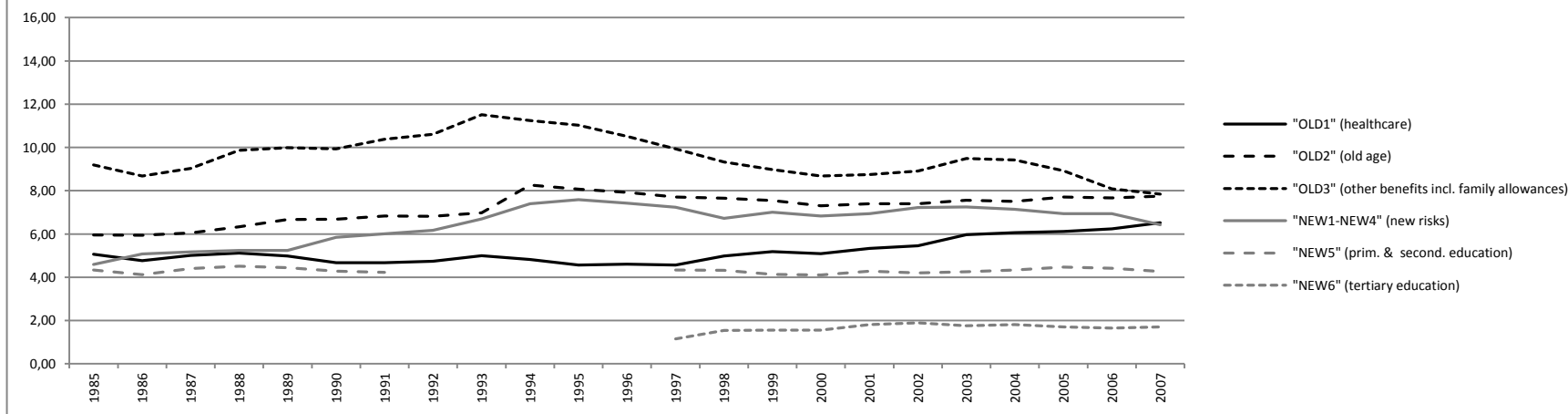
CZ			1985-1989	1990-1994	1995-1999	2000-2004	2005-2007	ppt change ('05-'07) vs. ('95-'99) vs.		ppt change '00-'94		ppt change '07-'04					
(a)	"OLD1" HEALTHCARE	Total Public		5,42	6,08	6,28	6,04	-0,04		-0,55		-0,65					
		Total Voluntary Private				0,02	0,02	0,02				0,00					
		Total		5,42	6,08	6,30	6,06	-0,02		-0,55		-0,65					
(b)	"OLD2" OLD AGE	Total Public		6,36	6,99	7,45	7,33	0,34		1,44		0,29					
		Total Mandatory Private			0,10	0,19	0,21	0,11		0,23		0,04					
		Total		6,36	7,09	7,64	7,54	0,45		1,67		0,33					
(c)	"OLD3" OTHER BENEFITS + ALLOWANCES / OTHER BENEFITS	Total Public		4,83	4,16	4,63	4,12	3,81	3,48	-0,35	0,01	-0,06	0,38	-0,81	-0,68		
		Total Mandatory + Voluntary Private			0,1	0,1	0,13	0,13	0,15	0,15	0,05	0,15	0,12	0,12	0,04	0,04	
		Total		4,83	3,65	4,26	3,56	4,76	4,25	-0,30	0,16	0,06	0,50	-0,77	-0,64		
(d)	"NEW1" PARENTAL LEAVE	Total Public		0,58	0,55	0,51	0,76	0,21		-0,08		0,49					
(e)	"NEW2" ELDERLY CARE	Total Public			0,52	0,54	0,38	-0,14				-0,36					
(f)	"NEW3" CHILD CARE/ CHILD CARE + ALLOWANCES	Total Public		0,08	1,26	0,27	0,97	0,52	1,04	0,55	0,89	0,28	-0,08	0,33	-0,11	-0,05	-0,18
(g)	"NEW4" ALMP	Total Public		0,20		0,13	0,20	0,26		0,13		0,03			0,01		
(h)	"NEW5" PRIMARY & SECONDARY EDUCATION	Total Public			2,94	2,89	2,88	-0,06				-0,37					
(i)	"NEW6" TERTIARY EDUCATION	Total Public			0,79	0,95	1,21	0,42				0,18					
(j)		TOTAL NEW 1-5		0,86	2,03	4,41	5,10	4,66	5,18	4,83	5,16	0,42	0,06				
(k)		TOTAL OLD and NEW (NEW6 excluded)		17,47		21,84	23,36	22,39		0,55							
(l)		Total cash															
(m)		Total in kind															
(n)		Total not classified (voluntary)															
(o)		EMPLOYMENT RATE		69,11	68,16	65,06	65,38	-2,78									
(p)		UNEMPLOYMENT RATE		3,34	5,63	8,11	6,81	1,18									
(q)		("OLD2"/65+)/(GDP/CAP)			100,00	105,30	100,93										
(r)		("NEW3"/<5)/(GDP/CAP)			100,00	100,00	208,04	121,54	202,93	96,43							
(s)		("NEW4"/UN)/(GDP/CAP)			100,00	104,35	159,29										
(t)		("NEW5"/5-19)/(GDP/CAP)			100,00	111,74	132,97										

Czech Republic: total social expenditures (public, private, voluntary), %GDP  
1990-2007, OECD SOCX



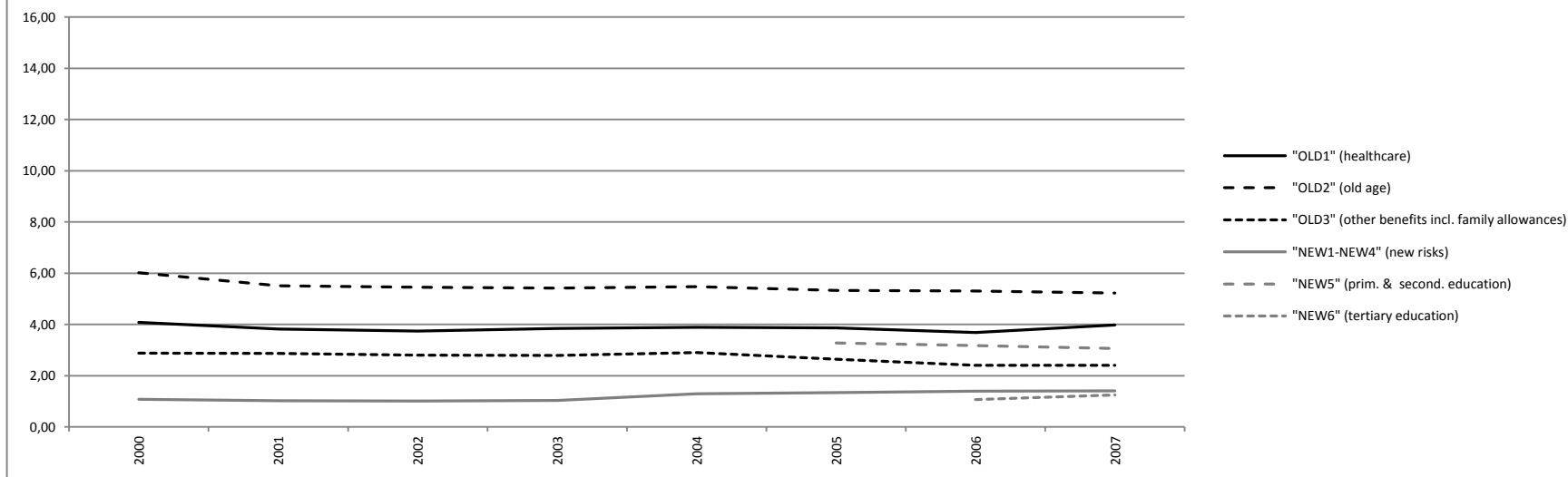
DK			1985-1989		1990-1994		1995-1999		2000-2004		2005-2007		ppt change ('05-'07) vs. ('85-'89)		ppt change '00-'94		ppt change '07-'04	
(a)	"OLD1" HEALTHCARE	Total Public	4,99		4,78		4,78		5,58		6,29		1,30		0,27		0,46	
		Total Voluntary Private											0,00					
		Total	4,99		4,78		4,78		5,58		6,29		1,30		0,27		0,46	
(b)	"OLD2" OLD AGE	Total Public	4,76		5,47		5,90		5,33		5,53		0,77		-0,99		0,30	
		Total Voluntary Private	1,43		1,64		1,88		2,11		2,18		0,75		0,04		-0,06	
		Total	6,19		7,11		7,78		7,44		7,71		1,52		-0,95		0,24	
(c)	"OLD3" OTHER BENEFITS + ALLOWANCES / OTHER BENEFITS	Total Public	9,35	8,62	10,33	9,36	9,57	8,57	8,81	7,80	8,05	7,09	-1,30	-1,53	-2,50	-1,63	-1,54	
		Total Mandatory Private			0,41	0,41	0,38	0,38	0,24	0,24	0,24	0,24	0,24	0,24	-0,07	-0,07	0,04	0,04
		Total	9,35	8,62	10,74	9,77	9,95	8,95	9,05	8,04	8,29	7,33	-1,06	-1,29	-2,57	-2,57	-1,59	-1,50
(d)	"NEW1" PARENTAL LEAVE	Total Public	0,41		0,55		0,64		0,54		0,55		0,14		-0,30		-0,04	
(e)	"NEW2" ELDERLY CARE	Total Public	2,16		2,57		2,68		2,66		2,74		0,58		-0,05		0,16	
(f)	"NEW3" CHILD CARE/ CHILD CARE + ALLOWANCES	Total Public	1,77	2,50	1,98	2,94	1,95	2,95	1,87	2,88	1,84	2,80	0,07	0,3	-0,31	-0,31	-0,04	-0,13
(g)	"NEW4" ALMP	Total Public	0,72		1,32		1,93		2,01		1,64		0,92		0,10		-0,44	
(h)	"NEW5" PRIMARY & SECONDARY EDUCATION	Total Public	4,36		4,25		4,26		4,24		4,38		0,02				-0,07	
(i)	"NEW6" TERTIARY EDUCATION	Total Public					1,42		1,76		1,69						-0,11	
(j)	TOTAL NEW 1-5		9,42	10,15	10,67	11,63	11,46	12,46	11,32	12,33	11,15	12,11	1,73	1,96				
(k)	TOTAL OLD and "NEW" (NEW6 excluded)		29,95		33,30		33,97		33,39		33,44		3,49					
(l)	Total cash																	
(m)	Total in kind																	
(n)	Total not classified (voluntary)																	
(o)	EMPLOYMENT RATE		75,65		73,87		75,03		75,96		76,58		0,93					
(p)	UNEMPLOYMENT RATE		6,62		9,13		6,28		5,11		4,38		-2,24					
(q)	("OLD2"/65+)/(GDP/CAP)		100,00		113,77		128,50		124,12		125,19							
(r)	("NEW3"/<5)/(GDP/CAP)		100,00	100,00	97,98	103,43	89,36	96,08	89,97	98,35	91,98	99,32						
(s)	("NEW4"/UN)/(GDP/CAP)		100,00		129,08		280,39		361,64		342,40							
(t)	("NEW5"/5-19)/(GDP/CAP)		100,00		102,73		113,49		107,80		112,80							

Denmark: total social expenditures (public, private, voluntary), %GDP  
1985-2007, OECD SOCX



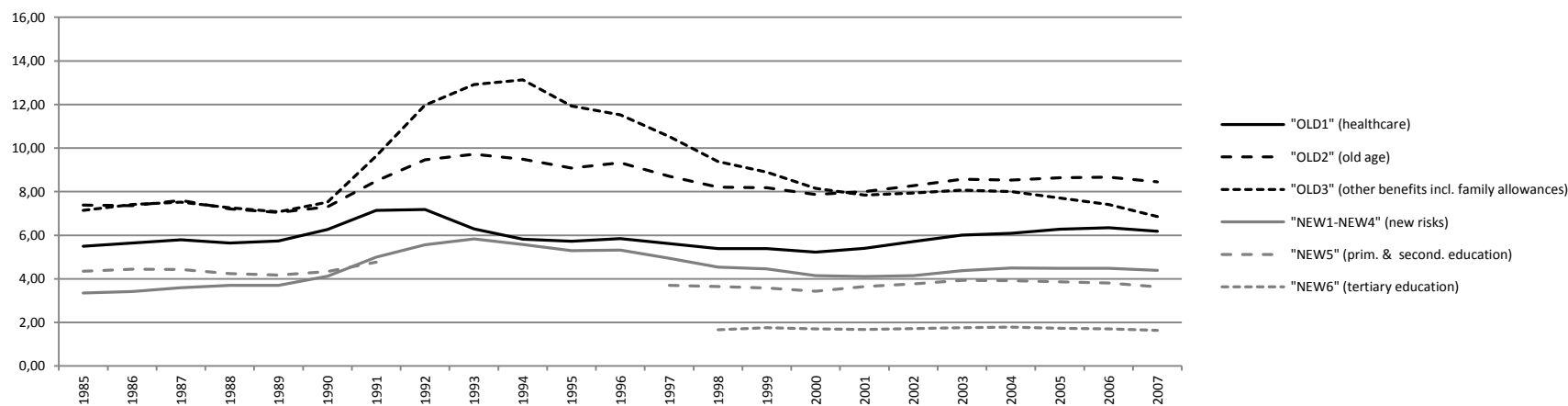
EE			1985-1989	1990-1994	1995-1999	2000-2004	2005-2007	ppt change ('05-'07) vs. ('00-'04)	ppt change '00-'94	ppt change '07-'04
		Total Public				3,87	3,83	-0,04	4,08	0,08
		Total Voluntary Private				0,00	0,01	0,01		0,01
(a)	"OLD1" HEALTHCARE	Total				3,87	3,84	-0,03	4,08	0,09
(b)	"OLD2" OLD AGE	Total Public				5,57	5,29	-0,28		-0,25
(c)	"OLD3" OTHER BENEFITS + ALLOWANCES / OTHER BENEFITS	Total Public				2,85	2,49	-0,36	-0,22	-0,49
(d)	"NEW1" PARENTAL LEAVE	Total Public				0,53	0,74	0,21		0,10
(e)	"NEW2" ELDERLY CARE	Total Public				0,25	0,22	-0,03		-0,07
(f)	"NEW3" CHILD CARE/ CHILD CARE + ALLOWANCES	Total Public				0,26	0,32	0,06	-0,09	0,04
(g)	"NEW4" ALMP	Total Public				0,04	0,09	0,05		0,00
(h)	"NEW5" PRIMARY & SECONDARY EDUCATION	Total Public					3,17			
(i)	"NEW6" TERTIARY EDUCATION	Total Public					1,16			
(j)		TOTAL NEW 1-5				1,08	1,73	4,54	5,04	3,46
(k)		TOTAL OLD and NEW (NEW6 excluded)				13,37	16,16	2,79		
(l)		Total cash								
(m)		Total in kind								
(n)		Total not classified (voluntary)								
(o)		EMPLOYMENT RATE		72,46	64,34	61,74	66,93	5,19		
(p)		UNEMPLOYMENT RATE		4,00	10,30	11,27	6,19	-5,08		
(q)		("OLD2"/65+)/(GDP/CAP)				100,00	87,93			
(r)		("NEW3"/<5)/(GDP/CAP)				100,00	100,00	113,68	82,80	
(s)		("NEW4"/UN)/(GDP/CAP)				100,00	349,65			
(t)		("NEW5"/5-19)/(GDP/CAP)								

Estonia: total social expenditures (public, private, voluntary), %GDP  
2000-2007, OECD SOCX



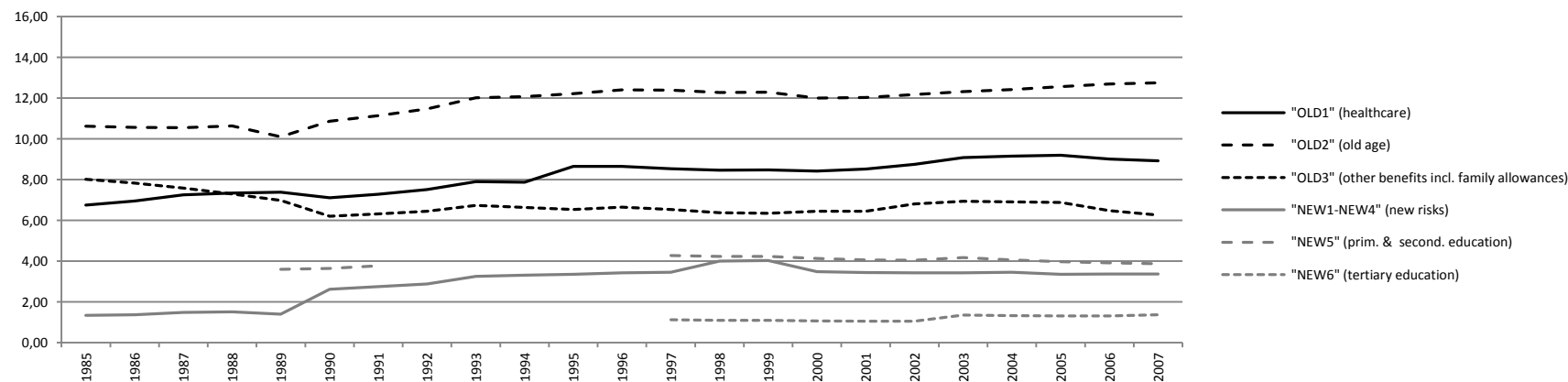
FI			1985-1989		1990-1994		1995-1999		2000-2004		2005-2007		ppt change ('05-'07) vs. ('85-'89)		ppt change '00-'94		ppt change '07-'04	
(a)	"OLD1" HEALTHCARE	Total Public	5,52		6,35		5,40		5,51		6,09		0,57		-0,59		0,10	
		Total Voluntary Private	0,14		0,19		0,19		0,18		0,18		0,04		-0,01		-0,01	
		Total	5,66		6,54		5,59		5,69		6,27		0,61		-0,60		0,09	
(b)	"OLD2" OLD AGE	Total Public	7,32		8,75		8,43		8,04		8,39		1,07		-1,50		-0,05	
		Total Voluntary Private	0,00		0,35		0,27		0,21		0,19		0,19		-0,12		-0,02	
		Total	7,32		9,10		8,70		8,25		8,58		1,26		-1,62		-0,07	
(c)	"OLD3" OTHER BENEFITS + ALLOWANCES / OTHER BENEFITS	Total Public	6,41	5,70	10,15	9,01	9,65	8,32	7,23	6,26	6,62	5,77	0,21	0,06	-4,87	-4,19	-1,05	-0,90
		Total Voluntary Private	0,87	0,87	0,89	0,89	0,8	0,8	0,77	0,77	0,71	0,71	-0,16	-0,16	-0,1	-0,1	-0,09	-0,09
		Total	7,28	6,57	11,04	9,90	10,45	9,12	8,00	7,03	7,33	6,48	0,05	-0,10	-4,97	-4,29	-1,14	-0,99
(d)	"NEW1" PARENTAL LEAVE	Total Public	0,75		1,25		0,81		0,62		0,64		-0,11		-0,59		0,01	
(e)	"NEW2" ELDERLY CARE	Total Public	0,84		1,06		1,12		1,15		1,27		0,43		-0,12		0,21	
(f)	"NEW3" CHILD CARE/ CHILD CARE + ALLOWANCES	Total Public	1,17	1,87	1,44	2,57	1,38	2,70	1,29	2,26	1,36	2,21	0,19	0,34	-0,11	-0,79	0,02	-0,14
(g)	"NEW4" ALMP	Total Public	0,79		1,46		1,60		1,19		1,19		0,4		-0,62		-0,13	
(h)	"NEW5" PRIMARY & SECONDARY EDUCATION	Total Public	4,33		4,55		3,64		3,74		3,77		-0,56				-0,28	
(i)	"NEW6" TERTIARY EDUCATION	Total Public					1,71		1,72		1,69						-0,15	
(j)		TOTAL NEW 1-5	7,88	8,58	9,76	10,90	8,55	9,88	7,99	8,96	8,23	9,08	0,35	0,5				
(k)		TOTAL OLD and "NEW" (NEW6 excluded)	28,14		36,44		33,29		29,93		30,41		2,27					
(l)		Total cash																
(m)		Total in kind																
(n)		Total not classified (voluntary)																
(o)		EMPLOYMENT RATE	72,57		66,61		63,93		67,97		69,52		-3,05					
(p)		UNEMPLOYMENT RATE	4,65		10,93		12,88		9,20		7,67		3,02					
(q)		("OLD2"/65+)/(GDP/CAP)	100,00		113,92		105,28		94,72		92,97							
(r)		("NEW3"/<5)/(GDP/CAP)	100,00	100,00	124,94	139,49	124,34	151,81	128,68	141,00	137,50	139,52						
(s)		("NEW4"/UN)/(GDP/CAP)	100,00		93,10		74,38		75,30		89,95							
(t)		("NEW5"/5-19)/(GDP/CAP)	100,00		109,35		86,74		90,74		99,74							

Finland: total social expenditures (public, private, voluntary), %GDP  
1985-2007, OECD SOCX



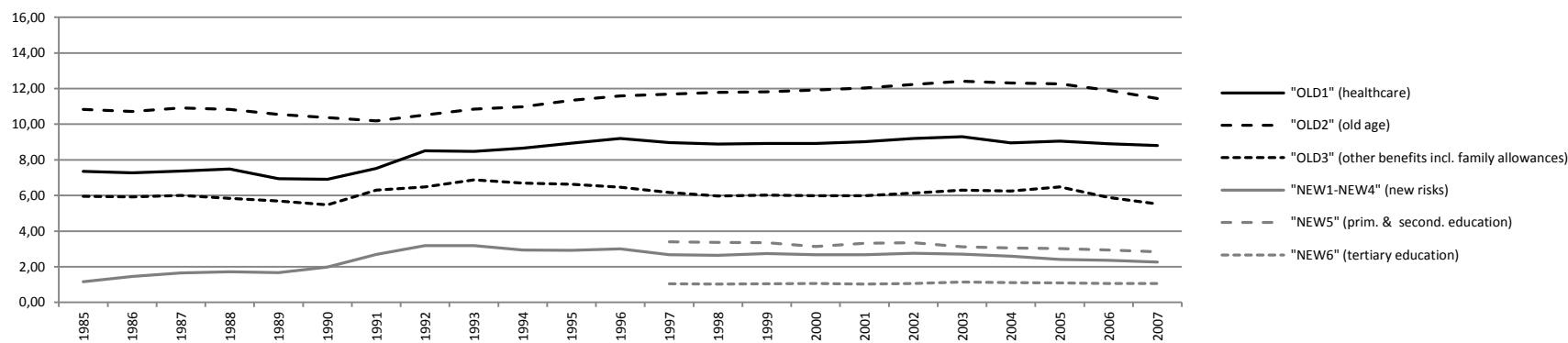
FR			1985-1989		1990-1994		1995-1999		2000-2004		2005-2007		ppt change ('05-'07) vs. ('85-'89)		ppt change '00-'94		ppt change '07-'04	
(a)	"OLD1" HEALTHCARE	Total Public	6,46		6,54		7,29		7,44		7,60		1,14		0,38		-0,22	
		Total Voluntary Private	0,68		1,00		1,26		1,35		1,45		0,77		0,16		-0,01	
		Total	7,14		7,54		8,55		8,79		9,05		1,91		0,54		-0,23	
(b)	"OLD2" OLD AGE	Total Public	10,37		11,29		12,09		11,94		12,38		2,01		-0,10		0,33	
		Total Mandatory + Voluntary Private	0,12		0,23		0,22		0,25		0,29		0,17		0,03		0,00	
		Total	10,49		11,52		12,31		12,19		12,67		2,18		-0,07		0,33	
(c)	"OLD3" OTHER BENEFITS + ALLOWANCES / OTHER BENEFITS	Total Public	7,40	5,60	5,67	4,50	5,67	4,50	5,54	4,48	5,30	4,26	-2,10	-1,34	-0,51	-0,38	-0,67	-0,67
		Total Mandatory + Voluntary Private	0,14	0,14	0,8	0,8	0,82	0,82	1,17	1,17	1,24	1,24	1,1	1,1	0,32	0,32	0,02	0,02
		Total	7,54	5,74	6,47	5,30	6,49	5,32	6,71	5,65	6,54	5,50	-1,00	-0,24	-0,19	-0,06	-0,65	-0,65
(d)	"NEW1" PARENTAL LEAVE	Total Public	0,29		0,30		0,38		0,39		0,32		0,03		0,10		-0,08	
(e)	"NEW2" ELDERLY CARE	Total Public	0,13		0,60		0,66		0,42		0,50		0,37		-0,29		0,14	
(f)	"NEW3" CHILD CARE/ CHILD CARE + ALLOWANCES	Total	0,34	2,14	1,10	2,27	1,41	2,58	1,55	2,60	1,64	2,67	1,3	0,53	0,36	0,23	0,03	0,03
(g)	"NEW4" ALMP	Total Public	0,67		0,97		1,20		1,09		0,90		0,23		0,02		-0,05	
(h)	"NEW5" PRIMARY & SECONDARY EDUCATION	Total Public	3,60		3,70		4,24		4,10		3,92		0,32				-0,20	
(i)	"NEW6" TERTIARY EDUCATION	Total Public					1,11		1,17		1,33						0,04	
(j)		TOTAL NEW 1-5	5,03	6,83	6,67	7,84	7,89	9,06	7,55	8,60	7,28	8,31	2,25	1,48				
(k)		TOTAL OLD and "NEW" (NEW6 excluded)	30,20		32,20		35,24		35,24		35,54		5,34					
(l)		Total cash																
(m)		Total in kind																
(n)		Total not classified (voluntary)																
(o)		EMPLOYMENT RATE	59,50		59,42		59,29		62,36		63,49		3,99					
(p)		UNEMPLOYMENT RATE	9,36		9,30		10,44		8,26		8,49		-0,87					
(q)		("OLD2"/65+)/(GDP/CAP)	100,00		101,48		101,03		95,77		98,05							
(r)		("NEW3"/<5)/(GDP/CAP)	100,00	100	341,29	110,82	466,01	133,84	506,77	133,82	541,88	138,64						
(s)		("NEW4"/UN)/(GDP/CAP)	100,00		138,27		152,33		171,11		137,79							
(t)		("NEW5"/5-19)/(GDP/CAP)	100,00		91,93		113,83		113,72		115,17							

France: total social expenditures (public, private, voluntary), %GDP  
1985-2007, OECD SOCX



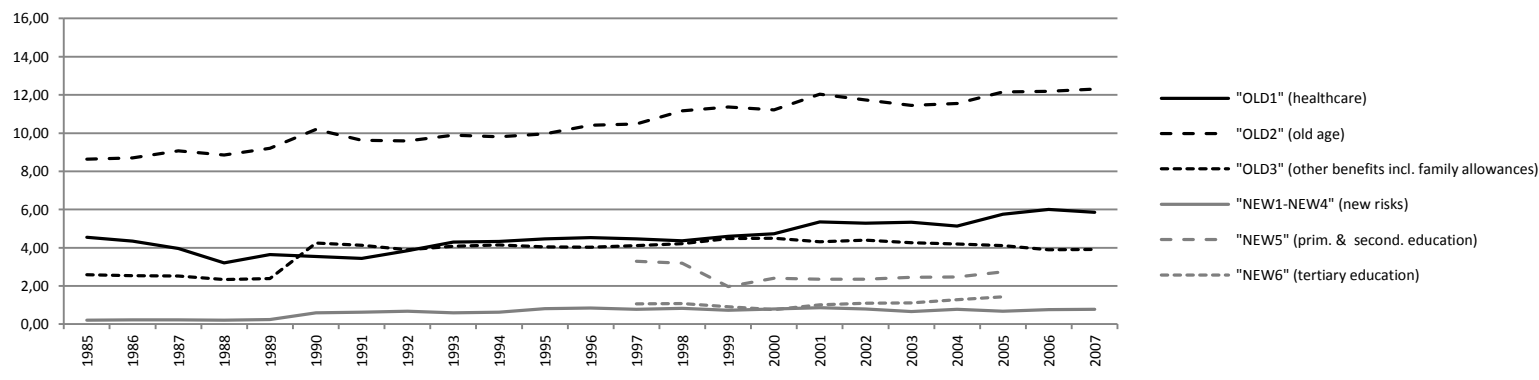
DE			1985-1989		1990-1994		1995-1999		2000-2004		2005-2007		ppt change ('05-'07) vs. ('85-'89)		ppt change '00-'94		ppt change '07-'04	
(a)	"OLD1" HEALTHCARE	Total Public	6,71		7,33		8,18		8,17		7,95		1,24		0,16		-0,14	
		Total Voluntary Private	0,57		0,69		0,81		0,91		0,97		0,40		0,10		0,01	
		Total	7,28		8,02		8,99		9,08		8,92		1,64		0,26		-0,13	
(b)	"OLD2" OLD AGE	Total Public	10,18		9,90		10,99		11,47		11,11		0,93		0,91		-0,87	
		Total Voluntary Private	0,59		0,68		0,66		0,72		0,76		0,17		0,03		0,00	
		Total	10,77		10,58		11,65		12,19		11,87		1,10		0,94		-0,87	
(c)	"OLD3" OTHER BENEFITS + ALLOWANCES / OTHER BENEFITS	Total Public	4,22	3,32	4,75	3,77	4,91	4,00	4,85	3,86	4,83	3,95	0,61	0,63	-0,58	-0,58	-0,64	-0,45
		Total Mandatory + Voluntary Private	1,66	1,66	1,61	1,61	1,34	1,34	1,29	1,29	1,13	1,13	-0,53	-0,53	-0,14	-0,14	-0,1	-0,1
		Total	5,88	4,98	6,36	5,38	6,25	5,34	6,14	5,15	5,96	5,08	0,08	0,10	-0,72	-0,72	-0,74	-0,55
(d)	"NEW1" PARENTAL LEAVE	Total Public	0,17		0,25		0,24		0,20		0,20		0,03		-0,03		0,04	
		Total Mandatory	0,05		0,06		0,06		0,06		0,05		0		0,00		-0,01	
		Total	0,22		0,31		0,30		0,26		0,25		0,03		-0,03		0,03	
(e)	"NEW2" ELDERLY CARE	Total Public	0,25		0,43		0,35		0,28		0,31		0,06		-0,22		0,04	
(f)	"NEW3" CHILD CARE/ CHILD CARE + ALLOWANCES	Total Public	0,24	1,14	0,68	1,66	0,74	1,65	0,73	1,72	0,74	1,62	0,5	0,48	-0,06	-0,06	0,01	-0,18
(g)	"NEW4" ALMP	Total Public	0,83		1,38		1,42		1,42		1,04		0,21		0,06		-0,41	
(h)	"NEW5" PRIMARY & SECONDARY EDUCATION	Total Public					3,34		3,19		2,93						-0,21	
(i)	"NEW6" TERTIARY EDUCATION	Total Public					1,06		1,08		1,08						-0,05	
(j)		TOTAL NEW 1-5	1,54	2,44	2,80	3,78	6,15	7,06	5,88	6,86	5,27	6,15	3,73	3,71				
(k)		TOTAL OLD and "NEW" (NEW6 excluded)	25,47		27,76		33,04		33,29		32,02		6,55					
(l)		Total cash																
(m)		Total in kind																
(n)		Total not classified (voluntary)																
(o)		EMPLOYMENT RATE	62,67		65,41		64,53		65,27		67,24		4,57					
(p)		UNEMPLOYMENT RATE	6,42		6,72		8,97		8,79		10,09		3,67					
(q)		("OLD2"/65+)/(GDP/CAP)	100,00		117,99		129,39		123,18		106,79							
(r)		("NEW3"/<5)/(GDP/CAP)	100,00	100,00	346,19	176,91	433,12	202,46	446,34	221,29	492,54	226,07						
(s)		("NEW4"/UN)/(GDP/CAP)	100,00		153,39		117,41		121,58		73,44							
(t)		("NEW5"/5-19)/(GDP/CAP)					100,00		98,17		96,50							

Germany: total social expenditures (public, private, voluntary), %GDP  
1985-2007, OECD SOCX



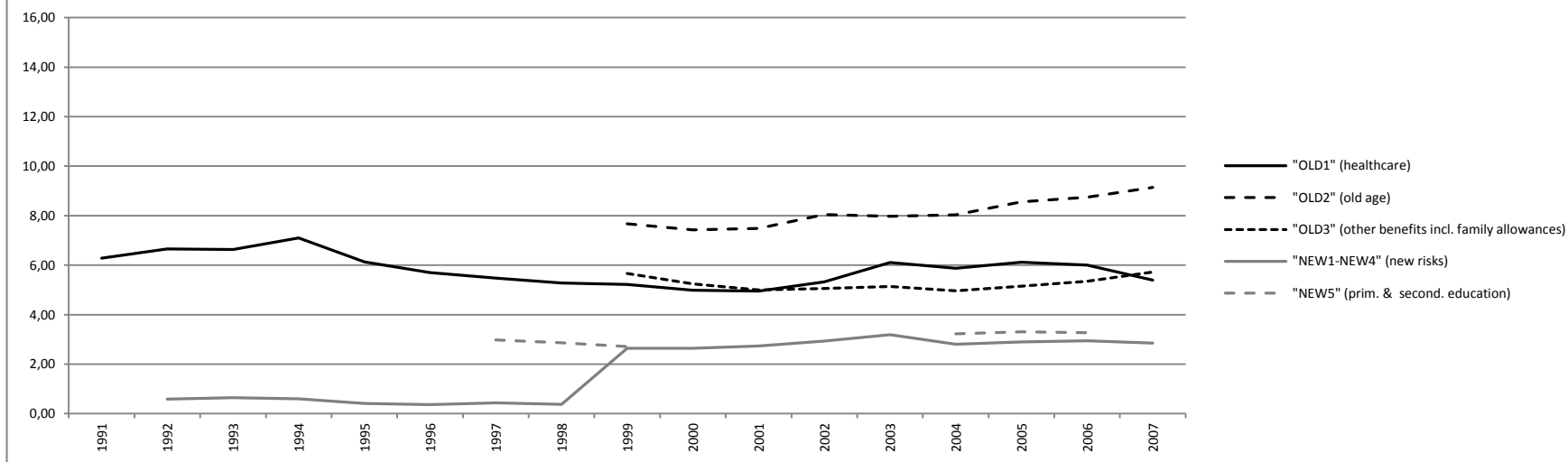
GR			1985-1989		1990-1994		1995-1999		2000-2004		2005-2007		ppt change ('05-'07) vs. ('85-'89)		ppt change '00-'94		ppt change '07-'04			
(a)	"OLD1" HEALTHCARE	Total Public	3,94		3,89		4,48		5,17		5,87		1,93		0,40		0,73			
(b)	"OLD2" OLD AGE	Total Public	8,89		9,49		10,30		11,14		11,83		2,94		1,33		0,80			
		Total Voluntary Private	0,00		0,33		0,37		0,45		0,39		0,39		0,08		-0,04			
		Total	8,89		9,82		10,67		11,59		12,22		3,33		1,41		0,76			
(c)	"OLD3" OTHER BENEFITS + ALLOWANCES / OTHER BENEFITS	Total Public	2,47	2,28	2,48	2,05	2,59	2,02	2,81	2,35	2,74	2,32	0,27	0,04	0,30	0,47	-	-		
		Total Voluntary Private			1,63		1,63		1,59		1,52		1,23		1,23		0,05		0,05	
		Total	2,47	2,28	4,11	3,68	4,18	3,61	4,33	3,87	3,97	3,55	1,50	1,27	0,35	0,52	-0,29	-0,24		
(d)	"NEW1" PARENTAL LEAVE	Total Public	0,05		0,08		0,08		0,08		0,09		0,04		0,01		0,01			
(e)	"NEW2" ELDERLY CARE	Total Public			0,02		0,07		0,08		0,08		0,08		0,05		-0,01			
(f)	"NEW3" CHILD CARE/ CHILD CARE + ALLOWANCES	Total Public	0,01	0,21	0,29	0,71	0,31	0,87	0,39	0,85	0,39	0,82	0,38	0,61	0,06	0,11	-0,01	-0,06		
(g)	"NEW4" ALMP	Total Public	0,16		0,23		0,34		0,23		0,18		0,02		0,05		0,01			
(h)	"NEWS" PRIMARY & SECONDARY EDUCATION	Total Public					2,82		2,41		2,75									
(i)	"NEW6" TERTIARY EDUCATION	Total Public					1,02		1,05		1,43									
(j)		TOTAL NEW 1-5	0,22	0,42	0,62	1,05	3,62	4,19	3,19	3,65	3,49	3,92	3,27	3,5						
(k)		TOTAL OLD and "NEW" (NEW6 excluded)	15,52		18,44		22,95		24,28		25,55		10,03							
(l)		Total cash																		
(m)		Total in kind																		
(n)		Total not classified (voluntary)																		
(o)		EMPLOYMENT RATE	55,03		53,82		55,05		57,54		60,94		5,91							
(p)		UNEMPLOYMENT RATE	7,54		8,52		10,65		10,24		8,82		1,28							
(q)		("OLD2"/65+)/(GDP/CAP)	100,00		102,87		100,28		98,89		97,59									
(r)		("NEW3"/<5)/(GDP/CAP)	100,00	100,00	2392,07	407,95	2642,84	520,77	3461,71	532,94	3419,67	500,06								
(s)		("NEW4"/UN)/(GDP/CAP)	100,00		123,24		140,93		91,43		81,93									
(t)		("NEW5"/5-19)/(GDP/CAP)					100,00		97,83		131,13									

Greece: total social expenditures (public, private, voluntary), %GDP  
1985-2007, OECD SOCX



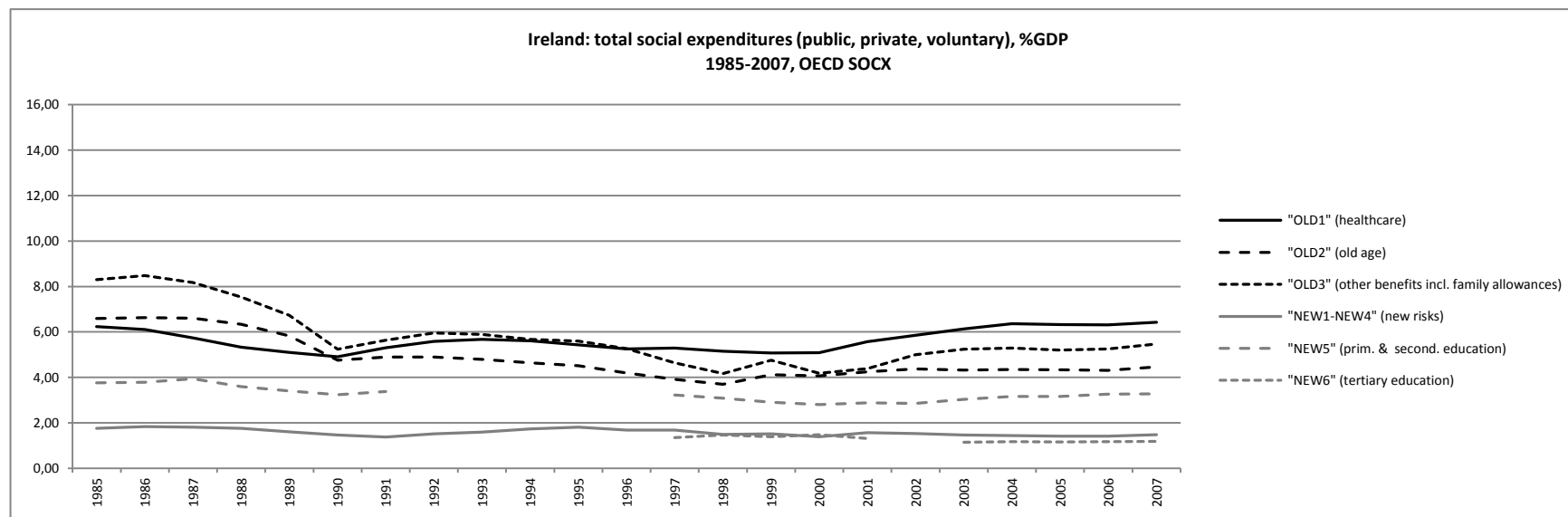
HU			1985-1989	1990-1994	1995-1999	2000-2004	2005-2007	ppt change ('05-'07) vs. ('95-'99)		ppt change '00-'94		ppt change '07-'04		
(a)	"OLD1" HEALTHCARE	Total Public		6,67	5,56	5,41	5,72	0,16		-2,13		-0,54		
		Total Voluntary Private			0,01	0,04	0,12	0,11		0,01		0,06		
		Total		6,67	5,57	5,45	5,84	0,27		-2,12		-0,48		
(b)	"OLD2" OLD AGE	Total Public			7,67	7,79	8,81	1,14		7,43		1,11		
(c)	"OLD3" OTHER BENEFITS + ALLOWANCES / OTHER BENEFITS	Total Public			5,67	4,16	5,08	3,84	5,38	4,05	-0,29	-0,11		
		Total Voluntary Private							0,03	0,03	0,03	0,03	0,22	-0,02
		Total Public			5,67	4,16	5,08	3,84	5,41	4,08	-0,26	-0,08	0,04	0,04
(d)	"NEW1" PARENTAL LEAVE	Total Public			0,45	0,61	0,70	0,25				0,11		
(e)	"NEW2" ELDERLY CARE	Total Public			0,63	0,68	0,68	0,05				0,01		
(f)	"NEW3" CHILD CARE/ CHILD CARE + ALLOWANCES	Total Public			1,16	2,66	1,16	2,40	1,18	2,51	0,02	-0,14		
(g)	"NEW4" ALMP	Total Public		0,61	0,40	0,41	0,34	-0,06		-0,21		0,08		
(h)	"NEW5" PRIMARY & SECONDARY EDUCATION	Total Public		4,15	2,85	3,22	3,29	0,44						
(i)	"NEW6" TERTIARY EDUCATION	Total Public			1,00									
(j)	TOTAL NEW 1-5				5,49	6,99	6,08	7,32	6,19	7,53	0,7	0,54		
(k)	TOTAL OLD and "NEW" (NEW6 excluded)				24,40		24,40		26,25		1,85			
(l)	Total cash													
(m)	Total in kind													
(n)	Total not classified (voluntary)													
(o)	EMPLOYMENT RATE			55,32	53,47	56,44	57,18	3,71						
(p)	UNEMPLOYMENT RATE			11,02	8,89	6,04	7,43	-1,46						
(q)	("OLD2"/65+)/(GDP/CAP)				100,00	98,85	107,81							
(r)	("NEW3"/<5)/(GDP/CAP)				100,00	100,00	106,69	95,62	107,47	99,04				
(s)	("NEW4"/UN)/(GDP/CAP)				100,00		143,30		93,91					
(t)	("NEW5"/5-19)/(GDP/CAP)				100,00		123,64		147,15					

Hungary: total social expenditures (public, private, voluntary), %GDP  
1991-2007, OECD SOCX

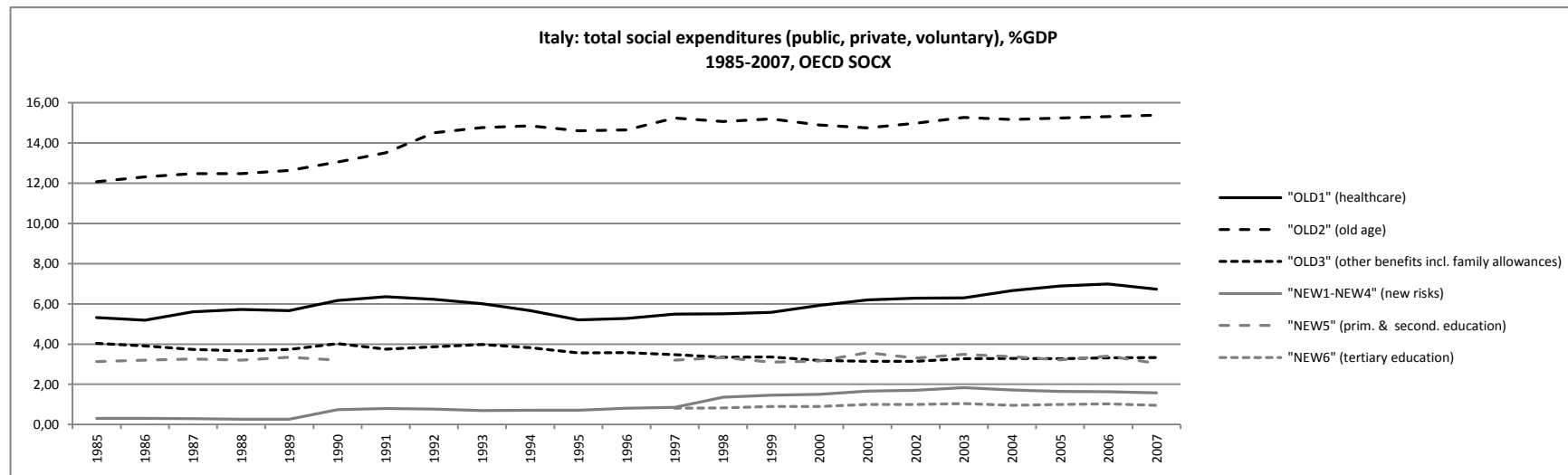




IE			1985-1989		1990-1994		1995-1999		2000-2004		2005-2007		ppt change ('05-'07) vs. ('85-'89)		ppt change '00-'94		ppt change '07-'04	
(a)	"OLD1" HEALTHCARE	Total Public	5,15		4,82		4,68		5,33		5,75		0,60		-0,36		-0,05	
		Total Voluntary Private	0,55		0,60		0,56		0,47		0,60		0,05		-0,16		0,10	
		Total	5,70		5,42		5,24		5,80		6,35		0,65		-0,52		0,05	
(b)	"OLD2" OLD AGE	Total Public	5,39		3,90		3,11		3,24		3,45		-1,94		-0,67		0,18	
		Total Voluntary Private	1,01		0,90		0,98		1,03		0,92		-0,09		0,09		-0,06	
		Total	6,40		4,80		4,09		4,27		4,37		-2,03		-0,58		0,12	
(c)	"OLD3" OTHER BENEFITS + ALLOWANCES / OTHER BENEFITS	Total Public	7,84	6,89	5,68	4,88	4,88	4,13	4,82	3,68	5,30	4,01	-2,54	-2,88	-1,49	-1,46	0,18	0,20
(d)	"NEW1" PARENTAL LEAVE	Total Public	0,08		0,05		0,05		0,07		0,11		0,03		0,00		0,06	
(e)	"NEW2" ELDERLY CARE	Total Public	0,48		0,31		0,24		0,32		0,35		-0,13		-0,04		0,08	
(f)	"NEW3" CHILD CARE/ CHILD CARE + ALLOWANCES	Total Public	0,06	1,02	0,05	0,85	0,12	0,88	0,24	1,38	0,27	1,57	0,21	0,56	0,11	0,07	0,01	-0,02
(g)	"NEW4" ALMP	Total Public	1,13		1,12		1,22		0,85		0,71		-0,42		-0,42		-0,03	
(h)	"NEW5" PRIMARY & SECONDARY EDUCATION	Total Public	3,70		3,31		3,07		2,94		3,23		-0,46				0,11	
(i)	"NEW6" TERTIARY EDUCATION	Total Public					1,40		1,27		1,17						0,02	
(j)																		
(k)	TOTAL NEW 1-5		5,45	6,40	4,84	5,64	4,70	5,46	4,42	5,55	4,67	5,97	-0,78	-0,43				
		TOTAL OLD and "NEW" (NEW6 excluded)	25,39		20,74		18,91		19,31		20,69		-4,70					
(l)																		
(m)		Total cash																
(n)		Total in kind																
(o)		Total not classified (voluntary)																
(p)		EMPLOYMENT RATE	49,84		51,33		57,49		64,96		68,08		18,24					
(q)		UNEMPLOYMENT RATE	16,49		14,71		9,68		4,40		4,66		-11,83					
(r)		("OLD2"/65+)/(GDP/CAP)	100,00		72,19		61,87		66,18		69,02							
(s)		("NEW3"/<5)/(GDP/CAP)	100,00	100,00	103,08	97,95	271,50	111,09	513,45	169,46	590,20	192,74						
(t)		("NEW4"/UN)/(GDP/CAP)	100,00		107,06		167,21		225,74		165,40							
(t)		("NEW5"/5-19)/(GDP/CAP)	100,00		84,95		95,30		105,51		136,20							

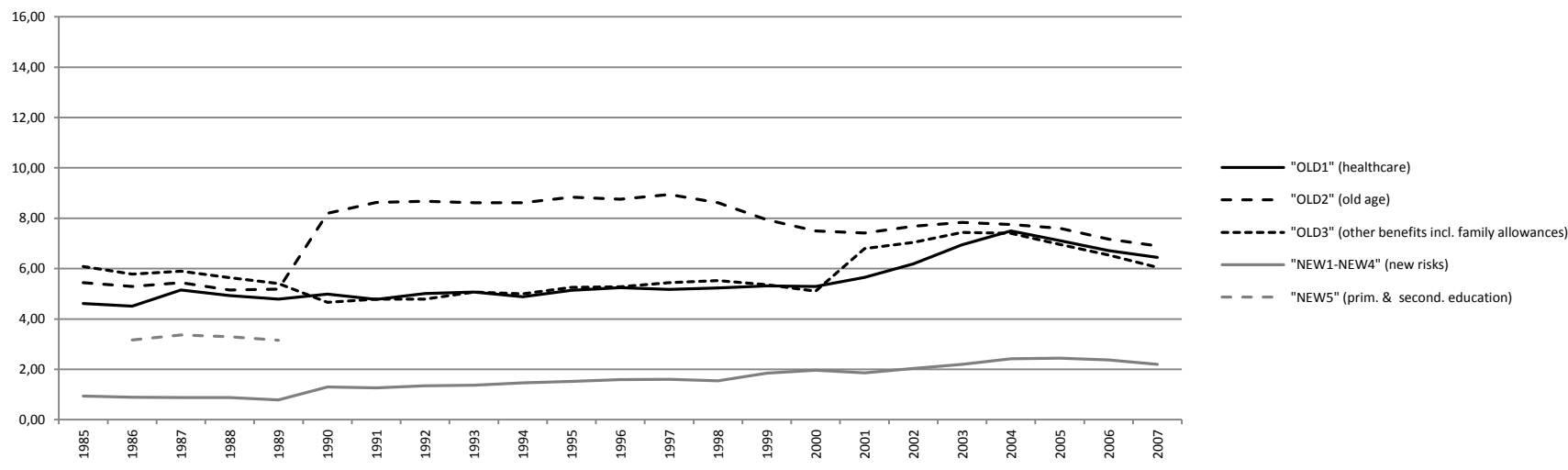


IT		1985-1989		1990-1994		1995-1999		2000-2004		2005-2007		ppt change ('05-'07) vs. ('85-'89)		ppt change '00-'94		ppt change '07-'04		
(a)	"OLD1" HEALTHCARE	Total Public	5,50		6,03		5,34		6,20		6,79		1,29		0,26		0,07	
		Total Voluntary Private			0,06		0,07		0,08		0,08		0,08		0,00		0,01	
		Total	5,50		6,09		5,41		6,28		6,87		1,37		0,26		0,08	
(b)	"OLD2" OLD AGE	Total Public	11,37		10,89		13,18		13,64		13,98		2,61		1,98		0,22	
		Total Mandatory + Voluntary Private	1,02		3,25		1,77		1,37		1,34		0,32		-1,93		0,00	
		Total	12,39		14,14		14,95		15,01		15,32		2,93		0,05		0,22	
(c)	"OLD3" OTHER BENEFITS + ALLOWANCES / OTHER BENEFITS	Total Public	3,81	3,23	2,99	2,64	2,65	2,32	2,50	2,11	2,63	2,26	-1,18	-0,97	-0,57	-0,69	0,02	0,02
		Total Mandatory + Voluntary Private			0,9	0,9	0,81	0,81	0,71	0,71	0,68	0,68	0,68	0,68	-0,06	-0,06	0,04	0,04
		Total	3,81	3,23	3,89	3,54	3,46	3,13	3,21	2,82	3,31	2,94	-0,50	-0,29	-0,63	-0,75	0,06	0,06
(d)	"NEW1" PARENTAL LEAVE	Total Public	0,12		0,11		0,11		0,15		0,18		0,06		0,01		0,00	
(e)	"NEW2" ELDERLY CARE	Total Public	0,07		0,15		0,12		0,13		0,13		0,06		-0,03		0,01	
(f)	"NEW3" CHILD CARE/ CHILD CARE + ALLOWANCES	Total Public	0,11	0,69	0,14	0,49	0,32	0,66	0,66	1,05	0,75	1,12	0,64	0,43	0,47	0,59	0,03	0,03
		Total Mandatory Private			0,05	0,05	0,05	0,05	0,05	0,05	0,04	0,04	0,04	0,04	0,02	0,02	0,00	0,00
		Total	0,11	0,69	0,19	0,54	0,37	0,71	0,71	1,10	0,79	1,16	0,68	0,47	0,48	0,61	0,03	0,03
(g)	"NEW4" ALMP	Total Public			0,29		0,43		0,69		0,51				0,32		-0,18	
(h)	"NEW5" PRIMARY & SECONDARY EDUCATION	Total Public	3,23		3,20		3,21		3,38		3,22		0,00				-0,33	
(i)	"NEW6" TERTIARY EDUCATION	Total Public					0,85		0,98		0,99						0,00	
(j)																		
(k)	TOTAL NEW 1-5		3,53	4,11	3,94	4,30	4,24	4,58	5,06	5,45	4,83	5,20	1,3	1,09				
		TOTAL OLD and "NEW" (NEW6 excluded)	25,23		28,06		28,06		29,56		30,33		5,10					
(l)	EMPLOYMENT RATE	51,97		52,32		51,85		55,61		58,18		6,21						
(m)	UNEMPLOYMENT RATE	11,59		10,90		11,75		9,26		6,94		-4,65						
(n)																		
(o)	("OLD2"/65+)/(GDP/CAP)	100,00		100,54		95,79		88,64		85,96								
(p)	("NEW3"/<5)/(GDP/CAP)	100,00	100	144,66	85,65	340,28	113,99	704,66	179,53	787,65	185,61							
(q)	("NEW4"/UN)/(GDP/CAP)					100,00		197,91		194,88								
(r)	("NEW5"/5-19)/(GDP/CAP)	100,00		101,87		133,25		149,02		150,45								

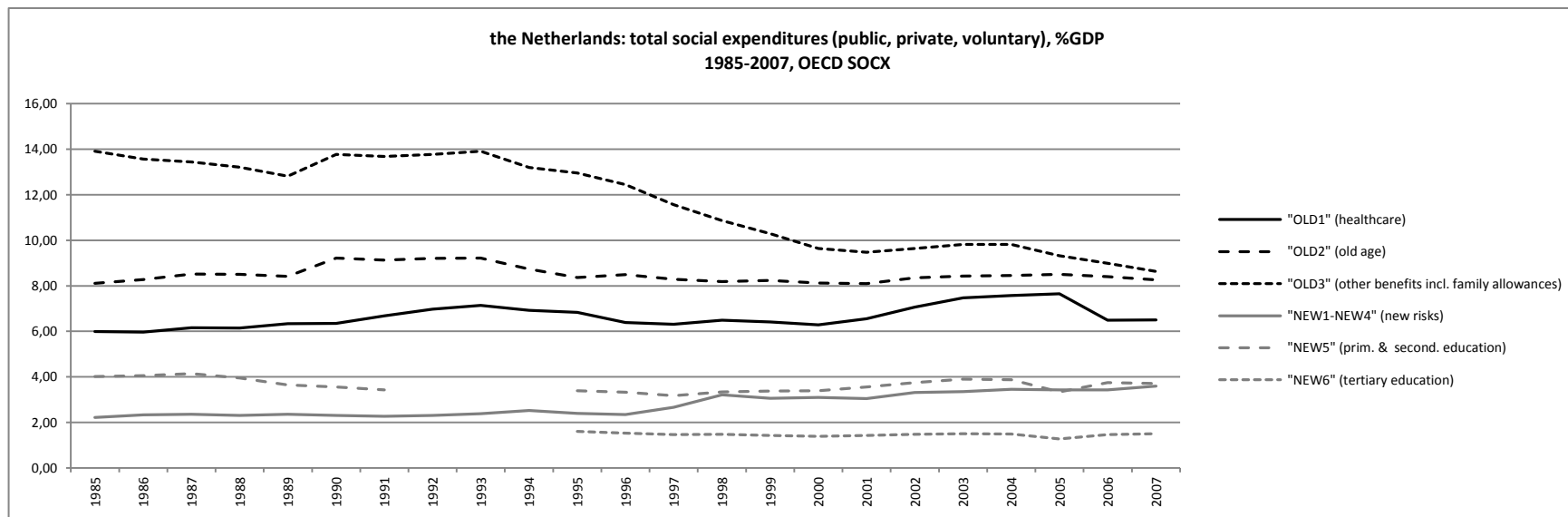


LU			1985-1989		1990-1994		1995-1999		2000-2004		2005-2007		ppt change ('05-'07) vs. ('85-'89)		ppt change '00-'94		ppt change '07-'04	
(a)	"OLD1" HEALTHCARE	Total Public	4,80		4,94		5,21		6,21		6,63		1,83		0,35		-0,97	
		Total Voluntary Private					0,08		0,11		0,13		0,13		0,06		-0,09	
		Total	4,80		4,94		5,29		6,32		6,76		1,96		0,41		-1,05	
(b)	"OLD2" OLD AGE	Total Public	5,30		8,54		8,62		7,27		6,85		1,55		-1,12		-0,77	
		Total Voluntary Private							0,45		0,37		0,37				-0,09	
		Total	5,30		8,54		8,62		7,72		7,22		1,92		-1,12		-0,86	
(c)	"OLD3" OTHER BENEFITS + ALLOWANCES / OTHER BENEFITS	Total Public	5,75	4,56	4,86	3,47	5,37	3,61	6,36	4,32	6,00	4,12	0,25	-0,44	0,11	-0,24	-1,27	-0,95
		Total Mandatory + Voluntary Private	0,01	0,01	0	0	0	0	0,5	0,5	0,51	0,51	0,5	0,51		0	-0,08	-0,08
		Total	5,76	4,57	4,86	3,47	5,37	3,61	6,86	4,82	6,51	4,63	0,75	0,07	0,11	-0,24	-1,35	-1,03
(d)	"NEW1" PARENTAL LEAVE	Total Public	0,19		0,45		0,56		0,50		0,43		0,24		0,13		-0,07	
(e)	"NEW2" ELDERLY CARE	Total Public	0,13		0,41		0,45		0,78		0,93		0,8		0,20		-0,11	
(f)	"NEW3" CHILD CARE/ CHILD CARE + ALLOWANCES	Total Public	0,22	1,41	0,34	1,73	0,47	2,23	0,51	2,54	0,50	2,38	0,28	0,96	0,08	0,42	-0,05	-0,38
(g)	"NEW4" ALMP	Total Public	0,33		0,15		0,14		0,31		0,48		0,15		0,10		0,01	
(h)	"NEW5" PRIMARY & SECONDARY EDUCATION	Total Public	3,24						3,21									
(i)	"NEW6" TERTIARY EDUCATION	Total Public																
(j)																		
(k)		TOTAL NEW 1-5	4,11	5,31	1,35	2,74	1,62	3,38	5,31	7,34	2,34	4,22	-1,77	-1,09				
(l)		TOTAL OLD and "NEW" (NEW6 excluded)	19,97		19,69		20,90		26,21		22,83		2,86					
(m)		EMPLOYMENT RATE	59,24		60,51		59,88		62,79		63,60		4,36					
(n)		UNEMPLOYMENT RATE	1,43		1,49		2,39		2,19		2,93		1,5					
(o)		("OLD2"/65+)/(GDP/CAP)	100,00		157,94		152,67		136,99		129,09							
(p)		("NEW3"/<5)/(GDP/CAP)	100,00	100,00	135,51	110,17	182,56	136,70	206,87	164,79	218,83	164,81						
(q)		("NEW4"/UN)/(GDP/CAP)	100,00		43,53		21,67		42,52		45,77							
(r)		("NEW5"/5-19)/(GDP/CAP)	100,00						93,31									

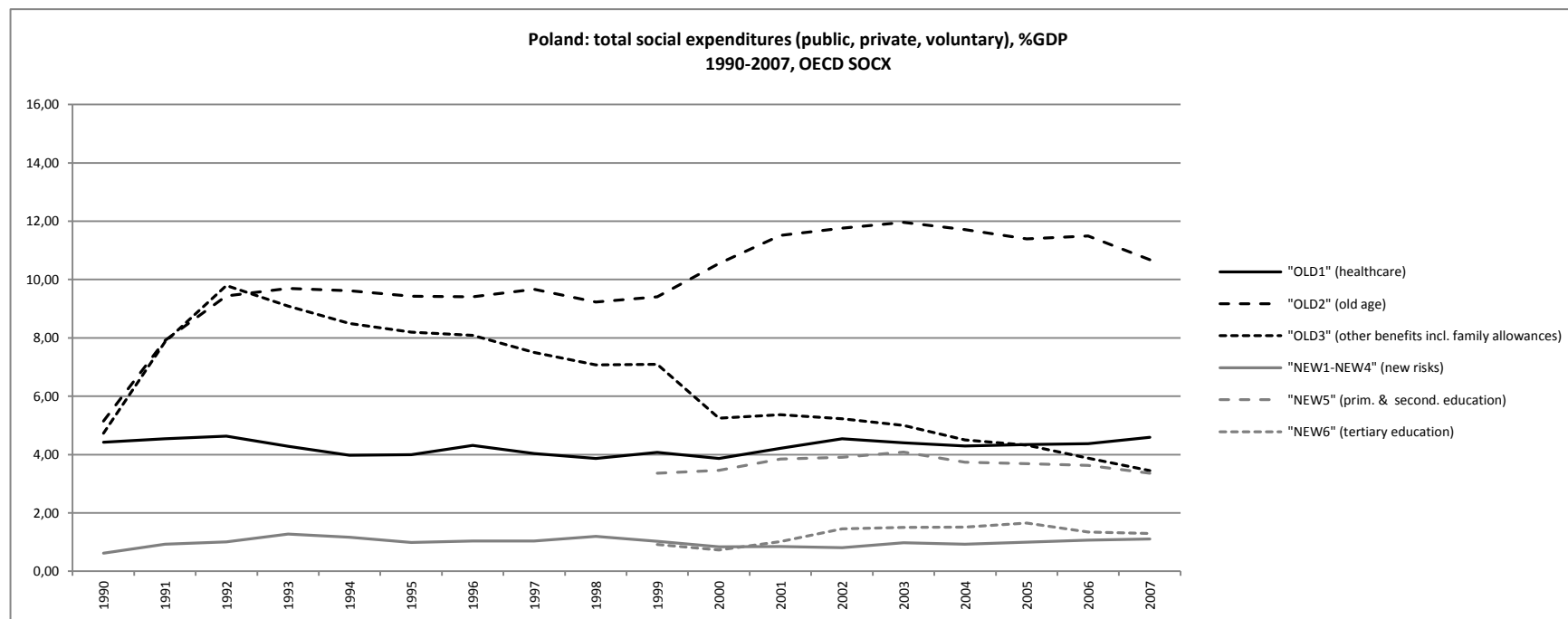
Luxembourg: total social expenditures (public, private, voluntary), %GDP  
1985-2007, OECD SOCX



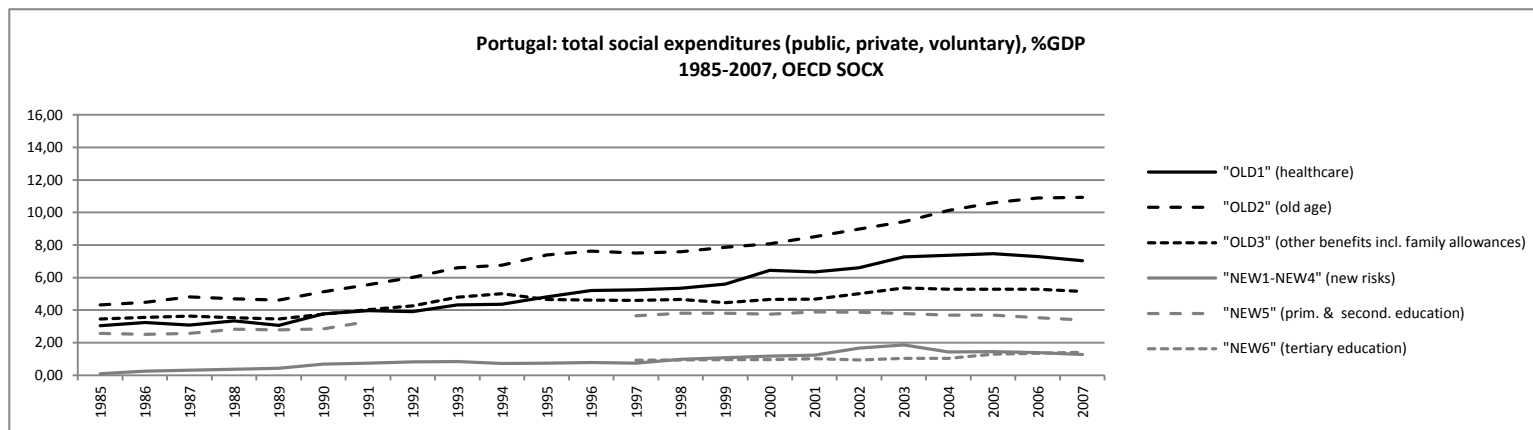
NL			1985-1989		1990-1994		1995-1999		2000-2004		2005-2007		ppt change ('05-'07) vs. ('85-'89)		ppt change '00-'94		ppt change '07-'04	
(a)	"OLD1" HEALTHCARE	Total Public	5,16		5,88		5,40		5,49		5,94		0,78		-1,05		0,12	
		Total Voluntary Private	0,96		0,93		1,09		1,50		0,94		-0,02		0,41		-1,20	
		Total	6,12		6,81		6,48		6,99		6,88		0,76		-0,64		-1,08	
(b)	"OLD2" OLD AGE	Total Public	6,12		6,45		5,53		5,01		4,83		-1,29		-0,93		-0,30	
		Total Mandatory + Voluntary Private	2,25		2,65		2,78		3,28		3,56		1,31		0,31		0,11	
		Total	8,37		9,10		8,31		8,29		8,39		0,02		-0,62		-0,19	
(c)	"OLD3" OTHER BENEFITS + ALLOWANCES / OTHER BENEFITS	Total Public	11,03	9,67	10,87	9,77	8,39	7,54	6,71	6,03	6,12	5,52	-4,91	-4,15	-3,47	-3,17	-1,03	-0,96
		Total Mandatory + Voluntary Private	2,36	2,36	2,79	2,79	3,24	3,24	2,97	2,97	2,86	2,86	0,5	0,5	-0,1	-0,1	-0,16	-0,16
		Total	13,39	12,03	13,66	12,56	11,63	10,78	9,68	9,00	8,98	8,38	-4,41	-3,65	-3,57	-3,27	-1,19	-1,12
(d)	"NEW1" PARENTAL LEAVE	Total Public	0,05										-0,05					
(e)	"NEW2" ELDERLY CARE	Total Public	0,53		0,53		0,58		0,69		0,83		0,29		0,14		-0,08	
(f)	"NEW3" CHILD CARE/ CHILD CARE + ALLOWANCES	Total Public	0,42	1,78	0,40	1,51	0,51	1,36	0,86	1,53	1,23	1,84	0,81	0,05	0,42	0,11	0,42	0,35
(g)	"NEW4" ALMP	Total Public	1,31		1,43		1,64		1,70		1,42		0,11		0,03		-0,21	
(h)	"NEW5" PRIMARY & SECONDARY EDUCATION	Total Public	3,96		3,49		3,32		3,69		3,60		-0,36				-0,16	
(i)	"NEW6" TERTIARY EDUCATION	Total Public					1,50		1,46		1,41						0,01	
(j)		TOTAL NEW 1-5	6,27	7,63	5,85	6,95	6,05	6,89	6,94	7,62	7,08	7,68	0,81	0,05				
(k)		TOTAL OLD and "NEW" (NEW6 excluded)	34,15		35,42		32,47		31,90		31,33		-2,82					
(l)		EMPLOYMENT RATE	55,90		63,25		67,87		72,54		73,31		17,41					
(m)		UNEMPLOYMENT RATE	9,83		6,81		5,42		3,13		3,94		-5,89					
(n)		("OLD2"/65+)/(GDP/CAP)	100,00		104,07		92,04		89,67		86,69							
(o)		("NEW3"/<5)/(GDP/CAP)	100,00	100,00	90,21	80,80	117,27	73,79	197,92	83,77	297,04	104,76						
(p)		("NEW4"/UN)/(GDP/CAP)	100,00		146,71		211,86		361,47		222,15							
(q)		("NEW5"/5-19)/(GDP/CAP)	100,00		93,32		96,76		106,86		108,76							



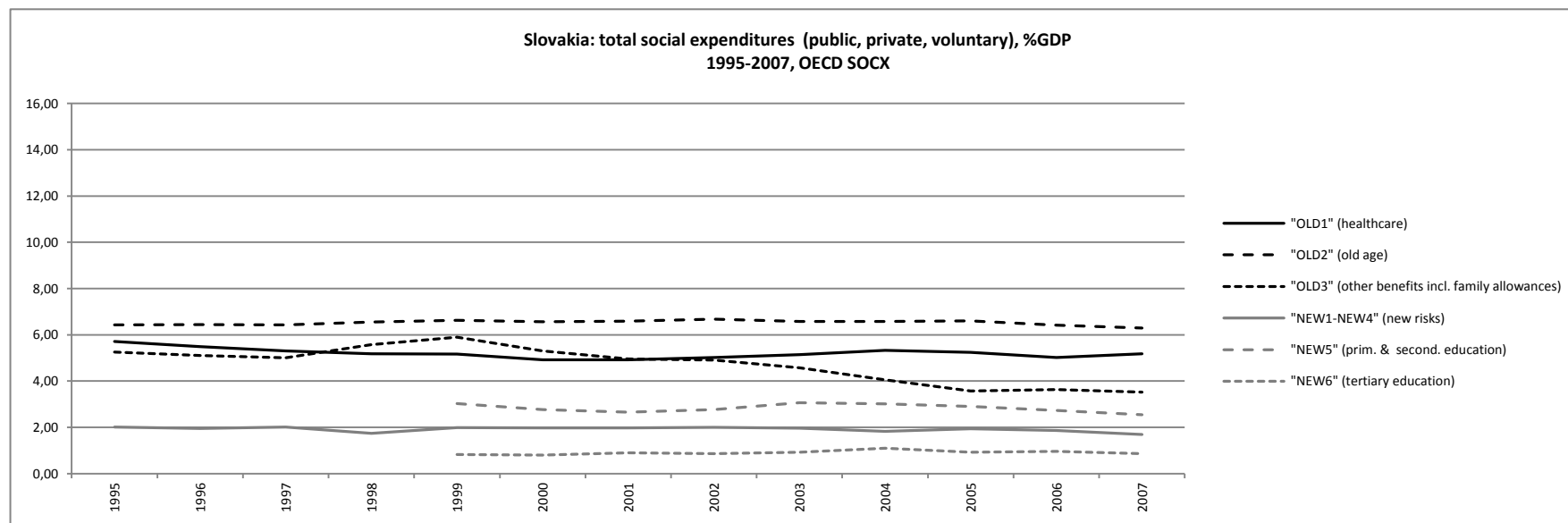
PL			1985-1989	1990-1994	1995-1999	2000-2004	2005-2007	ppt change ('05-'07) vs. ('95-'99)	ppt change '00-'94	ppt change '07-'04	
		Total Public		4,37	4,06	4,24	4,40	0,34	-0,11	0,30	
		Total Voluntary Private				0,04	0,04	0,04		0,00	
		Total		4,37	4,06	4,28	4,43	0,37	-0,11	0,30	
(a)	"OLD1" HEALTHCARE	Total Public		8,36	9,43	11,50	11,19	1,76	0,93	-1,03	
(b)	"OLD2" OLD AGE	Total Public		8,00	6,58	7,59	7,05	5,07	4,59	3,88	3,42
(c)	"OLD3" OTHER BENEFITS + ALLOWANCES / OTHER BENEFITS	Total Public		0,41	0,28	0,29	0,26	-0,02	-0,17	0,02	
(d)	"NEW1" PARENTAL LEAVE	Total Public		0,28	0,26	0,03	0,03	-0,23	-0,23	0,00	
(e)	"NEW2" ELDERLY CARE	Total Public			1,41	0,21	0,62	0,23	0,71	0,29	0,75
(f)	"NEW3" CHILD CARE/ CHILD CARE + ALLOWANCES	Total Public		0,31	0,43	0,32	0,49	0,06	-0,16	0,16	
(g)	"NEW4" ALMP	Total Public			3,30	3,81	3,56	0,26		-0,38	
(h)	"NEW5" PRIMARY & SECONDARY EDUCATION	Total Public			0,92	1,24	1,43	0,51		-0,22	
(i)	"NEW6" TERTIARY EDUCATION	Total Public									
(j)		TOTAL NEW 1-5		1,00	2,41	4,49	4,89	4,68	5,16	4,63	5,09
(k)		TOTAL OLD and "NEW" (NEW6 excluded)		21,73	25,56	25,43	25,53	24,13		-1,43	-1,30
(l)		EMPLOYMENT RATE		59,03	58,35	52,67	54,81	-3,54			
(m)		UNEMPLOYMENT RATE		12,12	12,28	18,58	13,73	1,45			
(n)		("OLD2"/65+)/(GDP/CAP)			100,00	111,70	103,28				
(o)		("NEW3"/<5)/(GDP/CAP)			100,00	100,00	117,43	134,92	152,61	150,75	
(p)		("NEW4"/UN)/(GDP/CAP)			100,00	48,19	107,68				
(q)		("NEW5"/5-19)/(GDP/CAP)			100,00	124,01	144,49				



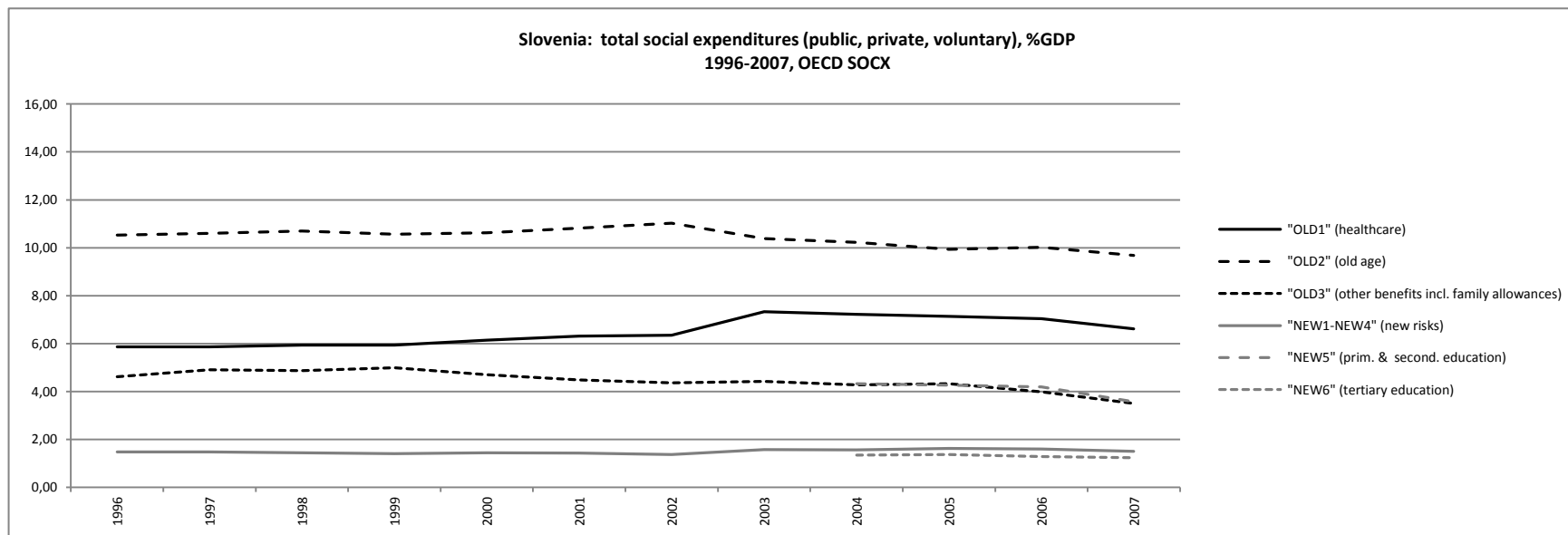
PT			1985-1989		1990-1994		1995-1999		2000-2004		2005-2007		ppt change ('05-'07) vs. ('85-'89)		ppt change '00-'94		ppt change '07-'04	
(a)	"OLD1" HEALTHCARE	Total Public	3,14		4,00		5,10		6,48		6,87		3,73		1,90		-0,32	
		Total Voluntary Private	0,02		0,07		0,14		0,33		0,40		0,38		0,16		-0,01	
		Total	3,16		4,07		5,24		6,81		7,27		4,11		2,06		-0,33	
(b)	"OLD2" OLD AGE	Total Public	4,36		5,79		7,41		8,84		10,58		6,22		1,35		0,85	
		Total Voluntary Private	0,23		0,23		0,19		0,19		0,23		0,00		-0,03		-0,03	
		Total	4,59		6,02		7,60		9,03		10,81		6,22		1,32		0,82	
(c)	"OLD3" OTHER BENEFITS + ALLOWANCES / OTHER BENEFITS	Total Public	2,93	2,40	3,69	3,25	3,71	3,31	3,85	3,43	3,97	3,52	1,03	1,13	0,53	0,48	0,22	0,19
		Total Mandatory Private	0,59	0,59	0,68	0,68	0,89	0,89	1,15	1,15	1,27	1,27	0,68	0,68	0,18	0,18	0,08	0,08
		Total	3,52	2,99	4,37	3,93	4,60	4,20	5,00	4,58	5,24	4,79	1,71	1,81	0,35	0,30	0,14	0,11
(d)	"NEW1" PARENTAL LEAVE	Total Public	0,07		0,08		0,09		0,14		0,21		0,14		0,03		0,03	
(e)	"NEW2" ELDERLY CARE	Total Public	0,01		0,03		0,04		0,13		0,08		0,07		0,02		0,01	
(f)	"NEW3" CHILD CARE/ CHILD CARE + ALLOWANCES	Total Public	0,01	0,55	0,09	0,52	0,19	0,60	0,55	0,97	0,45	0,89	0,44	0,35	0,30	0,25	0,03	0,06
(g)	"NEW4" ALMP	Total Public	0,25		0,56		0,55		0,66		0,63		0,38		0,12		-0,16	
(h)	"NEW5" PRIMARY & SECONDARY EDUCATION	Total Public	2,66		3,08		3,76		3,80		3,54		0,88				-0,29	
(i)	"NEW6" TERTIARY EDUCATION	Total Public					0,94		1,00		1,35						0,36	
(j)		TOTAL NEW 1-5	3,00	3,54	3,84	4,28	4,63	5,04	5,28	5,70	4,91	5,36	1,91	1,82				
(k)		TOTAL OLD and "NEW" (NEW6 excluded)	14,27		18,30		22,07		26,12		28,23		13,95					
(l)		EMPLOYMENT RATE	64,73		66,27		65,14		67,99		67,71		2,98					
(m)		UNEMPLOYMENT RATE	7,04		5,06		6,10		5,21		7,80		0,76					
(n)		("OLD2"/65+)/((GDP/CAP)	100,00		115,18		132,66		146,40		169,19							
(o)		("NEW3"/<5)/((GDP/CAP)	100,00	100,00	1089,77	111,90	2340,92	132,07	6760,31	216,32	5646,95	203,59						
(p)		("NEW4"/UN)/((GDP/CAP)	100,00		270,41		214,08		284,05		170,75							
(q)		("NEW5"/5-19)/((GDP/CAP)	100,00		108,12		177,90		203,02		208,72							



SK			1985-1989	1990-1994	1995-1999		2000-2004		2005-2007		ppt change ('05-'07) vs. ('95-'99)		ppt change '00-'94		ppt change '07-'04	
(a)	"OLD1" HEALTHCARE	Total Public			5,37		5,06		5,15		-0,23				-0,15	
(b)	"OLD2" OLD AGE	Total Public			6,35		6,32		6,02		-0,33				-0,33	
		Total Voluntary Private			0,15		0,27		0,42		0,27				0,05	
		Total			6,50		6,59		6,44		-0,06				-0,28	
(c)	"OLD3" OTHER BENEFITS + ALLOWANCES / OTHER BENEFITS	Total Public			4,88	3,48	4,18	3,29	3,12	2,18	-1,76	-1,30			-0,17	0,02
		Total Mandatory + Voluntary Private			0,49	0,49	0,58	0,58	0,46	0,46	-0,03	-0,03		0,43	-0,37	-0,37
		Total			5,37	3,97	4,76	3,87	3,58	2,64	-1,79	-1,33		0,43	-0,54	-0,35
(d)	"NEW1" PARENTAL LEAVE	Total Public			0,65		0,53		0,50		-0,15				-0,03	
(e)	"NEW2" ELDERLY CARE	Total Public			0,40		0,46		0,53		0,13				0,09	
		Total Mandatory Private			0,14		0,13		0,08		-0,06				-0,11	
		Total			0,54		0,59		0,61		0,07				-0,04	
(f)	"NEW3" CHILD CARE/ CHILD CARE + ALLOWANCES	Total Public			0,18	1,58	0,45	1,33	0,39	1,33	0,21	-0,25		1,39	-0,03	-0,22
		Total Mandatory Private			0,04	0,04	0,04	0,04	0,04	0,04	0	0		0,03	-0,02	-0,01
		Total			0,22	1,62	0,49	1,37	0,43	1,37	0,21	-0,25		1,42	-0,05	-0,23
(g)	"NEW4" ALMP	Total Public		0,55	0,54		0,33		0,29		-0,25		-0,18		-0,02	
(h)	"NEW5" PRIMARY & SECONDARY EDUCATION	Total Public			3,02		2,86		2,73		-0,30				-0,47	
(i)	"NEW6" TERTIARY EDUCATION	Total Public			0,83		0,92		0,92		0,09				-0,23	
(j)		TOTAL NEW 1-5			4,97	6,37	4,80	5,69	4,56	5,50	-0,41	-0,87				
(k)		TOTAL OLD and "NEW" (NEW6 excluded)			22,21		21,21		19,73		-2,48					
(l)		EMPLOYMENT RATE		59,85	60,36		57,04		59,27		-1,09					
(m)		UNEMPLOYMENT RATE		13,65	13,05		18,46		13,50		0,45					
(n)		("OLD2"/65+)/(GDP/CAP)			100,00		98,59		93,35							
(o)		("NEW3"/<5)/(GDP/CAP)			100,00	100,00	266,26	102,31	241,95	106,27						
(p)		("NEW4"/UN)/(GDP/CAP)			100,00		38,48		47,15							
(q)		("NEW5"/5-19)/(GDP/CAP)			100,00		141,05		112,94							



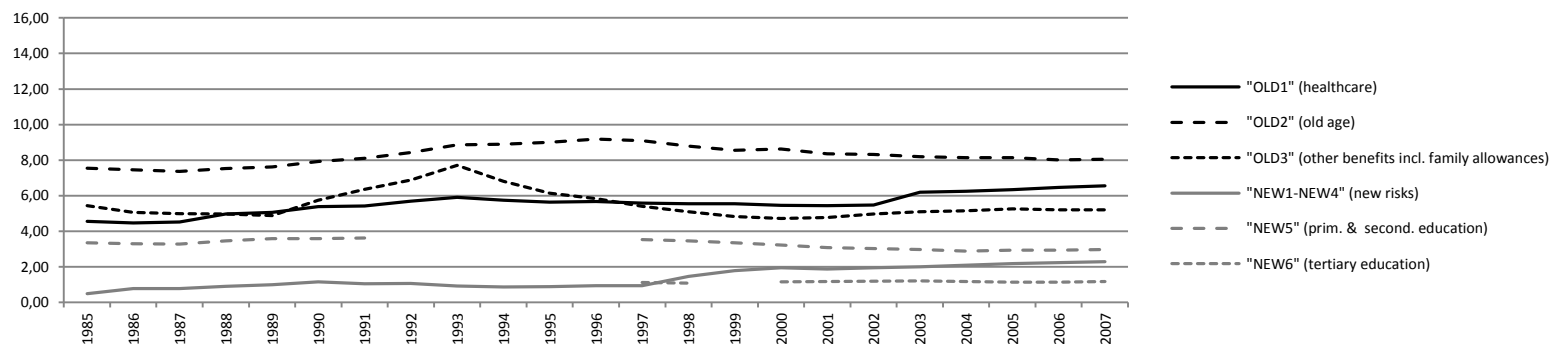
SI			1985-1989	1990-1994	1995-1999	2000-2004	2005-2007	ppt change ('05-'07) vs. ('95-'99)	ppt change '00-'94	ppt change '07-'04				
(a)	"OLD1" HEALTHCARE	Total Public			5,90	6,23	5,87	-0,03	6,15	-0,51				
		Total Voluntary Private			1,11	1,06	1,06	1,06		-0,09				
		Total			5,90	7,34	6,93	1,03		-0,60				
(b)	"OLD2" OLD AGE	Total Public			10,57	10,60	9,86	-0,71		-0,55				
		Total Voluntary Private			0,02	0,02	0,02	0,00		0,00				
		Total			10,59	10,62	9,88	-0,71		-0,55				
(c)	"OLD3" OTHER BENEFITS + ALLOWANCES / OTHER BENEFITS	Total Public			4,83	4,44	3,93	-0,90	-0,89	-0,77	-0,62			
		Total Voluntary Private			0,01	0,01	0,01	0,01	0,01	0	0			
		Total			4,84	4,06	4,45	3,94	-0,90	-0,88	-0,77	-0,62		
(d)	"NEW1" PARENTAL LEAVE	Total Public			0,52	0,48	0,51	-0,01		0,05				
(e)	"NEW2" ELDERLY CARE	Total Public			0,23	0,22	0,21	-0,02		0,00				
(f)	"NEW3" CHILD CARE/ CHILD CARE + ALLOWANCES	Total Public			0,66	1,44	0,61	1,55	0,54	1,31	-0,12	-0,14	-0,07	-0,22
(g)	"NEW4" ALMP	Total Public			0,05		0,17		0,31		0,26			-0,05
(h)	"NEW5" PRIMARY & SECONDARY EDUCATION	Total Public					4,33		4,01					-0,76
(i)	"NEW6" TERTIARY EDUCATION	Total Public					1,34		1,29					-0,10
(j)		TOTAL NEW 1-5			1,46	2,25	5,81	6,75	5,58	6,35	4,12	4,1		
(k)		TOTAL OLD and "NEW" (NEW6 excluded)			22,79		28,22		26,33		3,54			
(l)		EMPLOYMENT RATE			62,80		63,62		66,80		4			
(m)		UNEMPLOYMENT RATE			7,07		6,20		5,76		-1,31			
(n)		("OLD2"/65+)/(GDP/CAP)			100,00		90,69		78,68					
(o)		("NEW3"/<5)/(GDP/CAP)			100,00	100,00	97,69	112,38	86,25	95,03				
(p)		("NEW4"/UN)/(GDP/CAP)			100,00		414,27		786,96					
(q)		("NEW5"/5-19)/(GDP/CAP)					100,00		102,57					



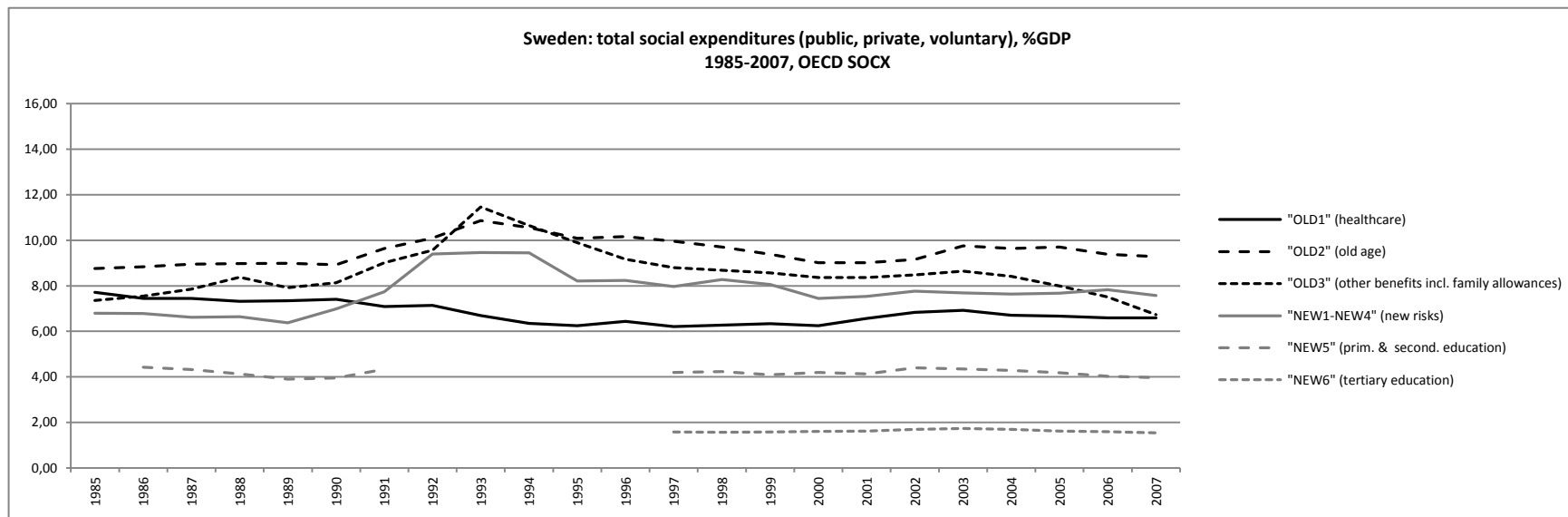


ES			1985-1989		1990-1994		1995-1999		2000-2004		2005-2007		ppt change ('05-'07) vs. ('85-'89)		ppt change '00-'94		ppt change '07-'04	
(a)	"OLD1" HEALTHCARE	Total Public	4,49		5,40		5,33		5,40		5,96		1,47		-0,33		0,28	
		Total Voluntary Private	0,21		0,23		0,26		0,36		0,49		0,28		0,04		0,03	
		Total	4,70		5,63		5,59		5,76		6,45		1,75		-0,29		0,31	
(b)	"OLD2" OLD AGE	Total Public	7,41		8,44		8,92		8,32		8,06		0,65		-0,26		-0,11	
		Total Voluntary Private	0,09		0,00		0,00		0,00		0,00		-0,09		0,00		0,00	
		Total	7,50		8,44		8,92		8,32		8,06		0,56		-0,26		-0,11	
(c)	"OLD3" OTHER BENEFITS + ALLOWANCES / OTHER BENEFITS	Total Public	5,04	4,92	6,69	6,57	5,46	5,32	4,94	4,76	5,22	5,00	0,18	0,08	-2,10	-2,09	0,05	0,07
		Total Voluntary Private	0,02	0,02	0	0	0	0	0	0	0	0	-0,02	-0,02	0	0	0	0
		Total	5,06	4,94	6,69	6,57	5,46	5,32	4,94	4,76	5,22	5,00	0,16	0,06	-2,10	-2,09	0,05	0,07
(d)	"NEW1" PARENTAL LEAVE	Total Public	0,05		0,07		0,11		0,14		0,18		0,13		0,05		0,08	
(e)	"NEW2" ELDERLY CARE	Total Public	0,05		0,18		0,18		0,32		0,44		0,39		0,07		0,08	
(f)	"NEW3" CHILD CARE/ CHILD CARE + ALLOWANCES	Total Public	0,03	0,15	0,11	0,24	0,32	0,46	0,65	0,83	0,73	0,96	0,70	0,80	0,54	0,53	0,04	0,03
(g)	"NEW4" ALMP	Total Public	0,65		0,64		0,59		0,86		0,87		0,22		0,42		0,00	
(h)	"NEW5" PRIMARY & SECONDARY EDUCATION	Total Public	3,39		3,60		3,44		3,03		2,94		-0,45				0,08	
(i)	"NEW6" TERTIARY EDUCATION	Total Public					1,09		1,17		1,14						0,00	
(j)		TOTAL NEW 1-5	4,17	4,29	4,60	4,72	4,64	4,77	5,00	5,17	5,16	5,38	0,99	1,09				
(k)		TOTAL OLD and "NEW" (NEW6 excluded)	21,43		25,36		24,61		24,02		24,89		3,46					
(l)		EMPLOYMENT RATE	48,28		49,89		51,14		59,69		65,53		17,25					
(m)		UNEMPLOYMENT RATE	19,95		19,63		20,03		11,71		8,67		-11,28					
(n)		("OLD2"/65+)/((GDP/CAP)	100,00		99,21		93,69		82,56		80,83							
(o)		("NEW3"/<5)/((GDP/CAP)	100,00	100,00	468,49	188,62	1501,46	396,26	3017,44	704,46	3153,25	761,98						
(p)		("NEW4"/UN)/((GDP/CAP)	100,00		98,72		82,84		82,51		234,31							
(q)		("NEWS"/5-19)/((GDP/CAP)	100,00		107,00		133,05		138,17		154,08							

Spain: total social expenditures (public, private, voluntary), %GDP  
1985-2007, OECD SOCX



SE			1985-1989		1990-1994		1995-1999		2000-2004		2005-2007		ppt change ('05-'07) vs. ('85-'89)		ppt change '00-'94		ppt change '07-'04			
(a)	"OLD1" HEALTHCARE	Total Public	7,45		6,94		6,30		6,64		6,60		-0,85		-0,09		-0,11			
		Total Voluntary Private							0,01		0,01		0,01		0,00		0,00			
		Total	7,45		6,94		6,30		6,65		6,61		-0,84		-0,09		-0,11			
(b)	"OLD2" OLD AGE	Total Public	7,67		8,31		7,89		7,42		7,36		-0,31		-1,31		-0,53			
		Total Voluntary Private	1,23		1,70		1,97		1,90		2,09		0,86		-0,24		0,17			
		Total	8,90		10,01		9,86		9,32		9,45		0,55		-1,55		-0,36			
(c)	"OLD3" OTHER BENEFITS + ALLOWANCES / OTHER BENEFITS	Total Public	7,81	6,95	9,52	8,50	8,45	7,63	7,55	6,71	6,61	5,84	-1,20	-1,11	-2,59	-2,39	-1,52	-1,49		
		Total Mandatory + Voluntary Private			0,61		0,61		0,57		0,57		0,91		0,91		0,8		0,8	
		Total	7,81	6,95	10,13	9,11	9,02	8,20	8,46	7,62	7,41	6,64	-0,40	-0,31	-2,28	-2,08	-1,68	-1,65		
(d)	"NEW1" PARENTAL LEAVE	Total Public	0,79		1,10		0,62		0,60		0,66		-0,13		-0,50		0,01			
(e)	"NEW2" ELDERLY CARE	Total Public	1,31		2,48		3,37		3,77		3,81		2,49		0,12		-0,08			
(f)	"NEW3" CHILD CARE/ CHILD CARE + ALLOWANCES	Total Public	2,29	3,16	2,25	3,27	1,80	2,62	1,60	2,44	1,83	2,61	-0,46	-0,56	-0,58	-0,78	0,13	0,10		
(g)	"NEW4" ALMP	Total Public	2,25		2,78		2,37		1,64		1,39		-0,86		-1,04		-0,14			
(h)	"NEW5" PRIMARY & SECONDARY EDUCATION	Total Public	4,19		4,14		4,17		4,27		4,06		-0,13				-0,31			
(i)	"NEW6" TERTIARY EDUCATION	Total Public					1,57		1,67		1,58						-0,16			
(j)		TOTAL NEW 1-5	10,83	11,7	12,75	13,77	12,33	13,14	11,88	12,73	11,75	12,52	0,92	0,82						
(k)		TOTAL OLD and "NEW" (NEW6 excluded)	34,99		39,83		37,51		36,31		35,22		0,23							
(l)		Employment Rate	81,51		77,08		71,78		74,42		74,68		-6,83							
(m)		Unemployment Rate	2,36		6,03		9,01		5,72		7,00		4,64							
(n)		("Old2"/65+)/(Gdp/Cap)	100,00		112,14		111,88		107,04		107,79									
(o)		("New3"/<5)/(Gdp/Cap)	100,00	100,00	85,20	89,88	76,14	80,45	78,87	87,29	84,23	87,15								
(p)		("New4"/Un)/(Gdp/Cap)	100,00		64,27		28,92		31,13		20,53									
(q)		("New5"/5-19)/(Gdp/Cap)	100,00		96,86		98,32		98,26		101,06									



UK			1985-1989		1990-1994		1995-1999		2000-2004		2005-2007		ppt change ('05-'07) vs. ('85-'89)		ppt change '00-'94		ppt change '07-'04	
(a)	"OLD1" HEALTHCARE	Total Public	4,79		5,43		5,46		5,97		6,77		1,98		-0,18		0,38	
		Total Voluntary Private	0,16		0,22		0,14		0,10		0,10		-0,06		-0,12		-0,03	
		Total	4,95		5,65		5,60		6,07		6,87		1,92		-0,30		0,35	
(b)	"OLD2" OLD AGE	Total Public	5,18		5,34		5,31		5,43		5,40		0,22		-0,10		-0,14	
		Total Mandatory + Voluntary Private	3,16		4,44		4,89		4,89		4,62		1,46		0,95		0,02	
		Total	8,34		9,78		10,20		10,32		10,02		1,68		0,85		-0,12	
(c)	"OLD3" OTHER BENEFITS + ALLOWANCES / OTHER BENEFITS	Total Public	6,90	5,77	6,92	6,02	6,81	5,93	6,08	5,24	5,89	5,13	-1,01	-0,64	-1,49	-1,50	-0,27	-0,24
		Total Mandatory + Voluntary Private	1,4	1,4	1,62	1,62	1,58	1,58	1,52	1,52	1,29	1,29	-0,11	-0,11	-0,19	-0,19	-0,14	-0,14
		Total	8,30	7,17	8,54	7,64	8,39	7,51	7,60	6,76	7,18	6,42	-1,12	-0,75	-1,68	-1,69	-0,41	-0,38
(d)	"NEW1" PARENTAL LEAVE	Total Public	0,07		0,09		0,07		0,09		0,28		0,21		0,00		0,23	
(e)	"NEW2" ELDERLY CARE	Total Public	0,36		0,38		0,50		0,66		0,74		0,38		0,11		-0,06	
(f)	"NEW3" CHILD CARE/ CHILD CARE + ALLOWANCES	Total Public	0,41	1,54	0,43	1,33	0,67	1,55	0,94	1,79	1,05	1,81	0,64	0,27	0,39	0,40	0,09	0,06
(g)	"NEW4" ALMP	Total Public	0,72		0,51		0,31		0,34		0,36		-0,36		-0,23		-0,14	
(h)	"NEW5" PRIMARY & SECONDARY EDUCATION	Total Public	3,09		3,18		3,26		3,89		3,98		0,90				-0,10	
(i)	"NEW6" TERTIARY EDUCATION	Total Public					1,00		1,02		1,23						0,17	
(j)		TOTAL NEW 1-5	4,65	5,78	4,59	5,49	4,81	5,68	5,92	6,77	6,41	7,17	1,76	1,39				
(k)		TOTAL OLD and "NEW" (NEW6 excluded)	26,24		28,56		29,00		29,91		30,48		4,24					
(l)		EMPLOYMENT RATE	68,70		69,85		70,43		72,44		72,48		3,78					
(m)		UNEMPLOYMENT RATE	9,80		8,98		7,19		4,97		5,13		-4,67					
(n)		("OLD2"/65+)/((GDP/CAP)	100,00		114,80		119,31		120,44		121,89							
(o)		("NEW3"/<5)/((GDP/CAP)	100,00	100,00	101,69	83,50	169,41	103,15	259,27	130,19	290,56	132,49						
(p)		("NEW4"/UN)/((GDP/CAP)	100,00		78,01		58,05		94,49		93,37							
(q)		("NEW5"/5-19)/((GDP/CAP)	100,00		102,29		111,32		132,52		148,11							

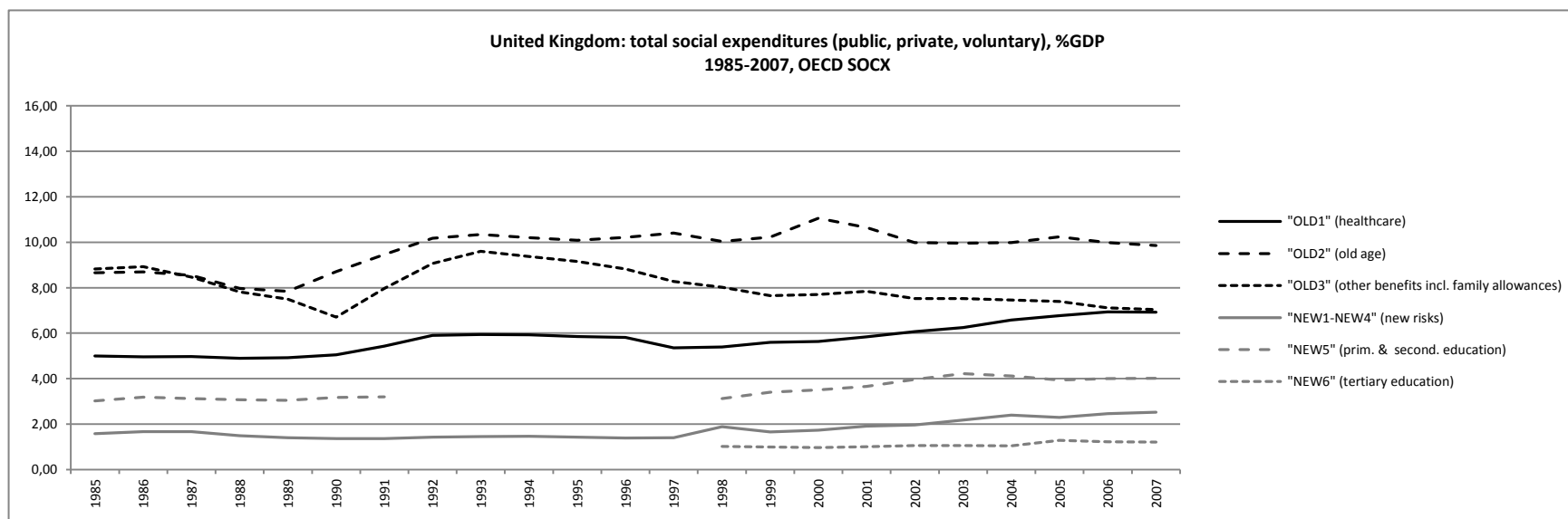


Table 1 presents the growth rates of social expenditures for the period '1985-1989' vs. '2005-2007'. Education expenditures have been excluded from these calculations since data for tertiary education are only available from 1995 onwards. Family allowances are included in 'working age benefits' (OLD 3), as is the case in the graphs.

We provide the growth rates for both public and total (including voluntary and mandatory private spending) expenditures. We do so because it is not always clear which criteria are used for the distinction between public and private expenditures in the SOCX database.

Table 1. Growth rates for 'old' and 'new' expenditures (public and total), '1985-1989' vs. '2005-2007'<sup>1</sup>

	Old expenditures		New expenditures		Working age benefits	
	Public	Total	Public	Total	Public	Total
AT	11,28	8,46	62,23	62,23	-6,29	-9,82
BE	-2,98	12,89	106,14	106,14	-18,21	-6,57
CZ	3,04	5,29	139,35	139,35	-22,51	-19,43
DE	11,07	9,94	54,64	52,51	3,84	-6,55
DK	3,20	7,90	33,62	33,62	-16,66	-14,00
EE	-5,30	-5,18	27,16	27,16	-11,47	-11,47
ES	12,98	13,70	185,93	185,93	1,53	1,05
FI	9,15	9,05	25,41	25,41	1,70	-0,78
FR	4,13	12,30	137,02	137,02	-32,49	-15,75
GR	31,69	42,31	229,77	229,77	-3,07	49,88
HU	122,24	123,92	243,47	243,47	200,28	201,93
IE	-18,98	-17,66	-18,17	-18,17	-28,47	-28,47
IT	13,08	17,41	448,92	491,19	-31,37	-13,54
LU	21,86	28,20	166,86	166,86	1,52	10,29
NL	-24,75	-13,21	50,40	50,40	-46,08	-33,91
PL	-6,29	-6,12	6,11	6,11	-52,42	-52,42
PT	105,31	106,95	374,42	374,42	35,21	48,59
SE	-9,89	-2,23	15,71	15,71	-14,54	-3,37
SI	-7,78	-2,85	8,21	8,21	-19,01	-19,05
SK	-13,93	-12,06	-3,53	-7,05	-36,03	-33,39
UK	6,14	11,04	55,56	55,56	-21,84	-19,13

Table 1 shows strong growth rates for 'new' expenditures, whereas 'old' expenditures display smaller or even negative growth rates (depending on what categories are included). To get a better understanding of whether these trends are recent phenomena or whether they started earlier, table 2 compares the growth rates for 1990-2000 and 2000-2007 of public expenditures. Annex 2 provides the same calculations for total expenditures (including voluntary and mandatory private spending). We

<sup>1</sup> Different time categories have been used for CZ: 1990-1994 vs. 2005-2007; EE: 2000-2004 vs. 2005-2007; HU: 1995-1999 vs. 2005-2007; PL: 1990-1994 vs. 2005-2007; SI: 1995-1999 vs 2005-2007; SK: 1995-1999 vs. 2005-2007.

withhold these data in this section since inclusion of private spending leads to the same conclusions.

Table 2. Growth rates for public expenditures: 'old' expenditures, working age benefits and 'new' expenditures, '90-'00 and '00-'07.

	1990-2000			2000-2007		
	Old	New	Working age	Old	New	Working age
AT	10,22	55,25	3,02	-1,32	0,47	-9,07
BE	-2,96	84,17	-7,31	2,39	10,64	-2,55
CZ	15,08	257,60	-7,44	-6,70	14,49	-22,15
DE	20,11	36,14	19,58	-5,38	-15,64	-12,00
DK	-2,52	16,91	-12,44	4,43	-6,03	-10,77
EE				-10,23	31,31	-14,39
ES	-1,95	69,91	-19,36	4,23	18,02	10,25
FI	-0,47	0,90	9,50	2,37	5,81	-15,86
FR	8,61	33,09	-5,34	3,91	-3,30	-3,11
GR	14,37	34,07	6,62	13,74	-2,02	6,02
H U				12,12	8,02	1,77
IE	-10,86	-5,52	-18,88	25,89	6,49	34,41
IT	13,02	124,46	-21,36	6,89	4,83	9,00
LU	-0,20	50,65	9,19	3,02	12,07	6,77
NL	-28,88	34,67	-41,99	-1,25	15,77	-13,51
PL	36,88	34,24	8,61	-4,63	32,81	-33,94
PT	49,83	71,49	13,70	20,16	7,00	7,04
SE	-9,87	6,53	-8,11	-5,43	1,69	-19,99
SI				-12,53	3,81	-25,78
SK				-12,36	-10,18	-36,18
UK	9,20	27,52	3,02	7,48	45,47	-3,98

With few exceptions, table 2 shows an overall increase in 'old' expenditures. With an ageing population in many of the 21 member states this may come as no surprise. Countries that experience negative growth rates do so at a very low rate.

To get a better understanding whether there has been a shift from old expenditures to new ones, it is interesting to focus on the 'working age benefits', as retirement and health care expenditures are large and, for a great deal, inflexible expenses.

The comparison of 'working age benefits' with 'new' expenditures reveals a slightly different and more pronounced picture. Most countries have seen a decreasing growth rate for 'working age' expenditures but have countered this with a positive growth rate for 'new' expenditures. Although the declining trend for 'working age' benefits is more dominant in the second period, the table shows that it already started in the first period. With very few exceptions, the growth rate for 'new' expenditures remained positive during both periods with larger growth rates during the first period. During the second period, some countries have even

decreased expenditures for 'new' programs with negative growth rates as a consequence.

In general, we can conclude that although working age benefits demonstrate negative growth rates during the first period, the pattern became more dominant during the second one. Decreases became larger and occurred in more countries. New expenditures on the other hand increased sharply in the course of the 1990s but although this trend persevered, from 2000 onwards the growth rate became much smaller. However, in order to clarify whether we can indentify resource competition, we have to take a closer look at possible shifts in absolute figures. Growth rates depend to a very large degree on the initial spending levels. Since 'old' and 'new' social programs have a very different history and both types target a different population group, wrong conclusions might be drawn when solely basing them on growth rates. Table 3 provides percentage point changes of the expenditures expressed as a % of GDP. As before, to get an understanding of when these changes begun, we provide data for 1990-2000 and 2000-2007.

Table 3. Percentage point change of 'old' and 'new' expenditures, '90-'00 and '00-'07.

	1990-2000			2000-2007		
	Old	New	Working age	Old	New	Working age
AT	2,293	0,679	0,172	-0,327	0,009	-0,532
BE	-0,696	1,186	-0,578	0,544	0,276	-0,187
CZ	2,344	1,288	-0,361	-1,198	0,259	-0,994
DE	3,954	0,696	0,707	-1,271	-0,41	-0,518
DK	-0,47	0,989	-1,099	0,806	-0,412	-0,833
EE				-1,318	0,336	-0,401
ES	-0,364	0,797	-1,091	0,776	0,349	0,466
FI	-0,093	0,037	0,611	0,468	0,241	-1,117
FR	1,851	0,867	-0,25	0,914	-0,115	-0,138
G						
R	2,22	0,201	0,134	2,428	-0,016	0,13
H						
U				2,071	0,212	0,083
IE	-1,409	-0,081	-0,899	2,994	0,09	1,329
IT	2,512	0,804	-0,652	1,503	0,07	0,216
LU	-0,035	0,66	0,425	0,537	0,237	0,342
NL	-6,624	0,798	-4,553	-0,204	0,489	-0,85
PL	5,253	0,213	0,403	-0,903	0,274	-1,725
PT	5,882	0,494	0,433	3,566	0,083	0,253
SE	-2,23	0,456	-0,608	-1,107	0,126	-1,376
SI				-2,686	0,055	-1,209
SK				-1,989	-0,179	-1,743
UK	1,3	0,374	0,134	1,155	0,788	-0,182

Table 3 reveals a mixed picture with regards to percentage point changes for public expenditures. Annex 3 provides the same calculations for total expenditures (including voluntary and mandatory private spending). Although most countries have experienced negative budgetary shifts for working age benefits, a substantial shift from 'old' to 'new' cannot be detected. Furthermore, less than half of the countries reveal opposing spending directions with regards to 'working age' benefits and 'new' expenditures. Most countries have increased or decreased both spending categories in the same direction but neither period shows a clear pattern.

#### **4. Conclusion**

In this paper we present raw data that may be used for detailed longitudinal and cross-national analyses of social expenditures. We provide as much detail as possible allowing different countries to be compared, different spending categories to be grouped and so on.

A clear pattern cannot be found when investigating the evolution of the different social expenditure categories. Starting levels as well as growth rates and percentage point growth differ to a very large degree across the member states.

As to whether or not budgets have shifted from 'old' to 'new' programs, the increase in expenditures for new social risks has been less substantial than the increase in expenditures for healthcare and retirement expenditures in absolute figures. Old social risks remain the main bulk of total social expenditures when expressed as a % of GDP. Nevertheless, the growth rate for 'new' expenditures has been much larger than for 'old' expenditures which indicates the increased importance of these spending categories.

Although some countries deviate, the dominant pattern in social expenditure evolution is an increase in both 'new' and 'old' expenditures with a larger growth rate of 'new' ones. Ireland<sup>2</sup> and Slovakia are the only two countries that show negative growth rates of both 'new' and 'old' expenditures. The Netherlands, Sweden, Estonia, Poland<sup>3</sup> and Slovenia counter the negative growth of 'old' expenditures with positive growth rates for 'new' spending categories.

Although the growth of 'new' expenditures has been larger than the growth of 'old' ones, we are not able to identify a substantial shift. In

---

<sup>2</sup> In scenario B (with family allowances included in 'new' expenditures), IE shows a positive growth rate for 'new' expenditures

<sup>3</sup> In scenario B (with family allowances included in 'old' expenditures), PL shows a negative growth rate for 'new' expenditures

absolute figures, 'old' expenditures remain much larger than 'new' expenditures. This might be because of the classification of the different social spending categories in 'old' and 'new'. Other classifications – as proposed by De Deken (2012) – might lead to different conclusions.

However, since 'old' expenditures include the relative inflexible expenditures of both health care and retirement, we also compared the so called 'passive' 'working age' benefits with 'new expenditures'. This comparison reveals opposing growth rates for these two expenditures. This trend started from the nineties onwards with declining growth rates for 'working age' benefits and increasing growth rates for 'new' expenditures.

Furthermore, based on the budgetary effort indicators we can also conclude that the increase in retirement expenditures was mainly driven by demographic changes and were by no means driven by deliberate extra budgetary efforts. As to new social programs, the budgetary effort indicators reveal a mixed picture, with some of the EU member states showing an exceptional budgetary effort and others showing stagnation or even large declines.

Since in absolute figures the increase in expenditures for new social risks has been less substantial than the increase in expenditures for healthcare and retirement expenditures, the lack of resources for traditional cash benefits cannot be blamed on new programs. When refining the classification of 'old' expenditures and only taking 'working age' benefits into consideration, we are still not able to identify a clear pattern that indicates a shift in resources from 'old' to 'new'.

Our findings are in line with the conclusions formulated by Vandenbroucke & Vleminckx (2011). Inclusion of both private and in kind benefits appears to have no significant effect on the overall trends in absolute figures. A more narrow classification of 'old' expenditures reveals a decline in resources for 'working age' benefits that might explain the increasing working age poverty although this pattern does not hold for all countries. With this analysis in mind, we conclude that a more specific focus on a few member states may generate more interesting results.

## **Acknowledgement**

We are grateful to Willem Adema, Bea Cantillon, Johan De Deken, Jeroen Horemans, Hendrik Larmuseau, Kim Lievens, Ninke Mussche, Wim Van Lancker, Tim Van Rie, Frank Vandenbroucke, Gerlinde Verbist and Koen Vleminckx for helpful comments and discussion.



## References

- Bonoli, G. (2006), 'New social risks and the politics of post-industrial social policies'. In K. Armingeon, and G. Bonoli (eds.), *The Politics of Post-Industrial Welfare States*, 3-26. *Adapting post-war social policies to new social risks*. London & New York: Routledge.
- Bonoli, G. (2007), 'Time Matters. Postindustrialization, New Social Risks, and Welfare State Adaptation in Advanced Industrial Democracies', *Comparative Political Studies*, 40 (5), 495-520.
- Cantillon, B. (2011), 'The Paradox of the Social Investment State. Growth, Employment and Social Inclusion in the Investment State', *Journal of European Social Policy*, 21(5), 432-449.
- Cantillon, B. and Van Lancker, W. (2012), 'Solidarity and Reciprocity in the Social Investment State: What can be Learned from the Case of Flemish School Allowances and Truancy?', *Journal of Social Policy*, 41(4), 657-675.
- De Deken, J. (2012), 'Is it Possible to Measure the Social Investment State? On the Problems of Defining a Concept and Operationalizing it on the Basis of Social Expenditure Data'. In B. Cantillon and F. Vandenbroucke (eds.), *For Better For Worse. For Richer For Poorer. Labour market participation, social redistribution and income poverty in the EU*. Oxford: Oxford University Press (Forthcoming).
- Education data: OECD Education Statistics Database (expenditure by nature and resource)
- Employment rate: OECD Country Statistical Profiles
- Esping-Andersen, G., Gallie, D., Hemerijck, and A., Myles, J. (2002), *Why We Need a New Welfare State*. Oxford: Oxford University Press.
- GDP: OECD Social Expenditure: Reference Series (for SK and SL data was used from the Education At A Glance publications)
- Giddens, A. (1998), *The Third Way: The Renewal of Social Democracy*. Cambridge: Polity Press.
- OECD, Social Expenditure Statistics Detailed Data (Database)
- Population Data: OECD Population Statistics (population)
- Taylor-Gooby, P. (2004), *New Risks, New Welfare. The Transformation of the European Welfare State*. Oxford: Oxford University Press.
- Unemployment (1000s): OECD Annual Labour Force Survey (ALFS) Summary tables.
- Unemployment rate as a percentage of civilian labour force: OECD Population and Labour Force Glance Database.
- Vandenbroucke, F. and Vleminckx, K. (2011), 'Disappointing poverty trends: is the social investment state to blame?', *Journal of European Social Policy* 19(5), 450-471.

## Annex 1

SOCIAL RISKS	BRANCH	TYPE OF PROGRAM
'OLD 1' Healthcare		
'OLD 2' Old age	Old age	Pension Early retirement pension Other cash benefits
	Survivors	Pension Other cash benefits Funeral expenses Other benefits in kind
'OLD 3' Other benefits*	Incapacity-related	Disability pension Pension (occupational injury and disease) Paid sick leave (occupational injury and disease) Paid sick leave (other sickness daily allowances) Other cash benefits Other benefits in kind
	ALMP	Unemployment compensation/severance pay Early retirement for labor market reasons
	Family	Other cash benefits <i>Case (a) family allowances included</i> <i>Case (b) family allowances excluded</i>
	Other social policy areas	Income maintenance Other cash benefits Social assistance Other benefits in kind
	Housing	Housing assistance Other benefits in kind
'NEW 1' Parental leave	Family	Maternity and parental leave
'NEW 2' Elderly care	Old age	Residential care/home-help services Other benefits in kind
'NEW 3' Childcare*	Family	Day care/home-help services Other benefits in kind <i>Case (a) family allowances excluded</i> <i>Case (b) family allowances included</i>
	Incapacity-related	Residential care/home-help services
'NEW 4' Active labor market policies	ALMP	PES and administration Training Job rotation and job sharing Employment incentives Supported employment and rehabilitation Direct job creation Start-up incentives
	Incapacity-related	Rehabilitation services
'NEW 5' Primary and secondary education		
'NEW 6' Tertiary education		

\* We provide two alternative classifications. In the first case family allowances are included in the working age cash benefits ('OLD3'). In the second case they are included in the 'new' spending category, *childcare* ('NEW3').

## Annex 2

Growth rates for social expenditures (public and total): 'old' expenditures, working age benefits and 'new' expenditures, '90-'00 and '00-'07

	1990-2000						2000-2007					
	OLD		NEW		OLD3		OLD		NEW		OLD3	
	Public	Total	Public	Total	Public	Total	Public	Total	Public	Total	Public	Total
AT	10,22	8,23	55,25	55,25	3,02	-0,50	-1,32	-1,68	0,47	0,47	-9,07	-9,45
BE	-2,96	0,39	84,17	84,17	-7,31	-4,84	2,39	11,56	10,64	10,64	-2,55	4,28
CZ	15,08	17,36	257,60	257,60	-7,44	-4,97	-6,70	-6,38	14,49	14,49	22,15	20,57
DE	20,11	17,31	36,14	34,57	19,58	6,52	-5,38	-5,08	-	-	-	-
D K	-2,52	-1,14	16,91	16,91	-	-	4,43	4,87	-6,03	-6,03	10,77	10,76
EE							10,23	10,11	31,31	31,31	14,39	14,39
ES	-1,95	-1,72	69,91	69,91	19,36	19,36	4,23	5,32	18,02	18,02	10,25	10,25
FI	-0,47	-0,01	0,90	0,90	9,50	6,36	2,37	1,76	5,81	5,81	15,86	15,14
FR	8,61	10,94	33,09	33,09	-5,34	2,00	3,91	4,59	-3,30	-3,30	-3,11	-1,20
G R H U	14,37	12,47	34,07	34,07	6,62	-0,18	13,74	9,48	-2,02	-2,02	6,02	-9,25
							12,12	13,13	8,02	8,02	1,77	2,56
IE	-	-9,78	-5,52	-5,52	-	-	25,89	23,58	6,49	6,49	34,41	34,41
	10,86				18,88	18,88						
IT	13,02	3,20	124,46	111,66	-	-	6,89	6,00	4,83	8,96	9,00	4,08
LU	-0,20	0,16	50,65	50,65	9,19	9,19	3,02	7,91	12,07	12,07	6,77	16,83
NL	-	-	34,67	34,67	-	-	-1,25	-2,73	15,77	15,77	-	-
	28,88	18,45			41,99	31,11					13,51	10,90
PL	36,88	36,88	34,24	34,24	8,61	8,61	-4,63	-4,45	32,81	32,81	-	-
											33,94	33,94
PT	49,83	51,47	71,49	71,49	13,70	24,14	20,16	20,59	7,00	7,00	7,04	10,65
SE	-9,87	-3,41	6,53	6,53	-8,11	3,38	-5,43	-3,77	1,69	1,69	-	-
											19,99	19,16
SI							-	-7,85	3,81	3,81	-	-
							12,53				25,78	25,80
SK							-	-	-	-	-	-
							12,36	10,35	10,18	15,63	36,18	32,87
UK	9,20	19,55	27,52	27,52	3,02	15,04	7,48	-2,53	45,47	45,47	-3,98	-
												10,60

## Annex 3

Percentage point change of 'old' and 'new' expenditures, '90-'00 and '00-'07.

	1990-2000		1990-2000		1990-2000		2000-2007		2000-2007		2000-2007	
	OLD		NEW		OLD3		OLD		NEW		OLD3	
	Public	Total	Public	Total	Public	Total	Public	Total	Public	Total	Public	Total
AT	2,293	2,029	0,679	0,679	0,172	-	-	-	0,009	0,009	-	-
BE	-	0,097	1,186	1,186	-	-	-	0,544	2,909	0,276	0,276	-
	0,696				0,578	0,419	0,544	2,909	0,276	0,276	0,187	0,353
CZ	2,344	2,698	1,288	1,288	-	-	-	-	0,259	0,259	-	-
					0,361	0,241	1,198	1,164	0,259	0,259	0,994	0,948
DE	3,954	3,913	0,696	0,688	0,707	0,347	-	-	-0,41	-	-	-
					0,707	0,347	1,271	1,348	-0,41	0,418	0,518	-0,76
D	-0,47	-	0,989	0,989	-	-	-	-	-	-	-	-
K		0,236			1,099	1,281	0,806	0,995	0,412	0,412	0,833	0,862
EE							-	-	0,336	0,336	-	-
							1,318	1,303	0,336	0,336	0,401	0,401
ES	-	-	0,797	0,797	-	-	0,776	0,991	0,349	0,349	0,466	0,466
	0,364	0,326			1,091	1,091	0,776	0,991	0,349	0,349	0,466	0,466
FI	-	-	0,037	0,037	0,611	0,467	0,468	0,368	0,241	0,241	-	-
	0,093	0,003			0,611	0,467	0,468	0,368	0,241	0,241	1,117	1,182
FR	1,851	2,563	0,867	0,867	-0,25	0,109	0,914	1,192	-	-	-	-
					-0,25	0,109	0,914	1,192	0,115	0,115	0,138	0,067
G	2,22	2,189	0,201	0,201	0,134	-	2,428	1,871	-	-	0,13	-
R					0,134	0,007	2,428	1,871	0,016	0,016	0,13	0,352
H							2,071	2,246	0,212	0,212	0,083	0,12
U							2,071	2,246	0,212	0,212	0,083	0,12
IE	-	-	-	-	-	-	2,994	3,067	0,09	0,09	1,329	1,329
	1,409	1,409	0,081	0,081	0,899	0,899	2,994	3,067	0,09	0,09	1,329	1,329
IT	2,512	0,743	0,804	0,795	-	-	1,503	1,439	0,07	0,135	0,216	0,13
					0,652	0,835	1,503	1,439	0,07	0,135	0,216	0,13
LU	-	0,029	0,66	0,66	0,425	0,425	0,537	1,411	0,237	0,237	0,342	0,85
	0,035				0,425	0,425	0,537	1,411	0,237	0,237	0,342	0,85
NL	-	-	0,798	0,798	-	-	-	-	0,489	0,489	-0,85	-1,01
	6,624	5,352			4,553	4,183	0,204	0,647	0,489	0,489	-0,85	-1,01
PL	5,253	5,253	0,213	0,213	0,403	0,403	0,903	0,868	0,274	0,274	-	-
					0,403	0,403	0,903	0,868	0,274	0,274	1,725	1,725
PT	5,882	6,516	0,494	0,494	0,433	0,904	3,566	3,948	0,083	0,083	0,253	0,495
					0,433	0,904	3,566	3,948	0,083	0,083	0,253	0,495
SE	-2,23	-	0,456	0,456	-	-	-	-	0,126	0,126	-	-
	0,813				0,608	0,253	1,107	0,868	0,126	0,126	1,376	1,484
SI							-	-	0,055	0,055	-	-
							2,686	1,685	0,055	0,055	1,209	1,212
SK							-	-	-	-	-	-
							1,989	-1,73	0,179	0,306	1,743	1,724
UK	1,3	3,755	0,374	0,374	0,134	0,82	1,155	-0,58	0,788	0,788	-	-
							1,155	-0,58	0,788	0,788	0,182	0,665