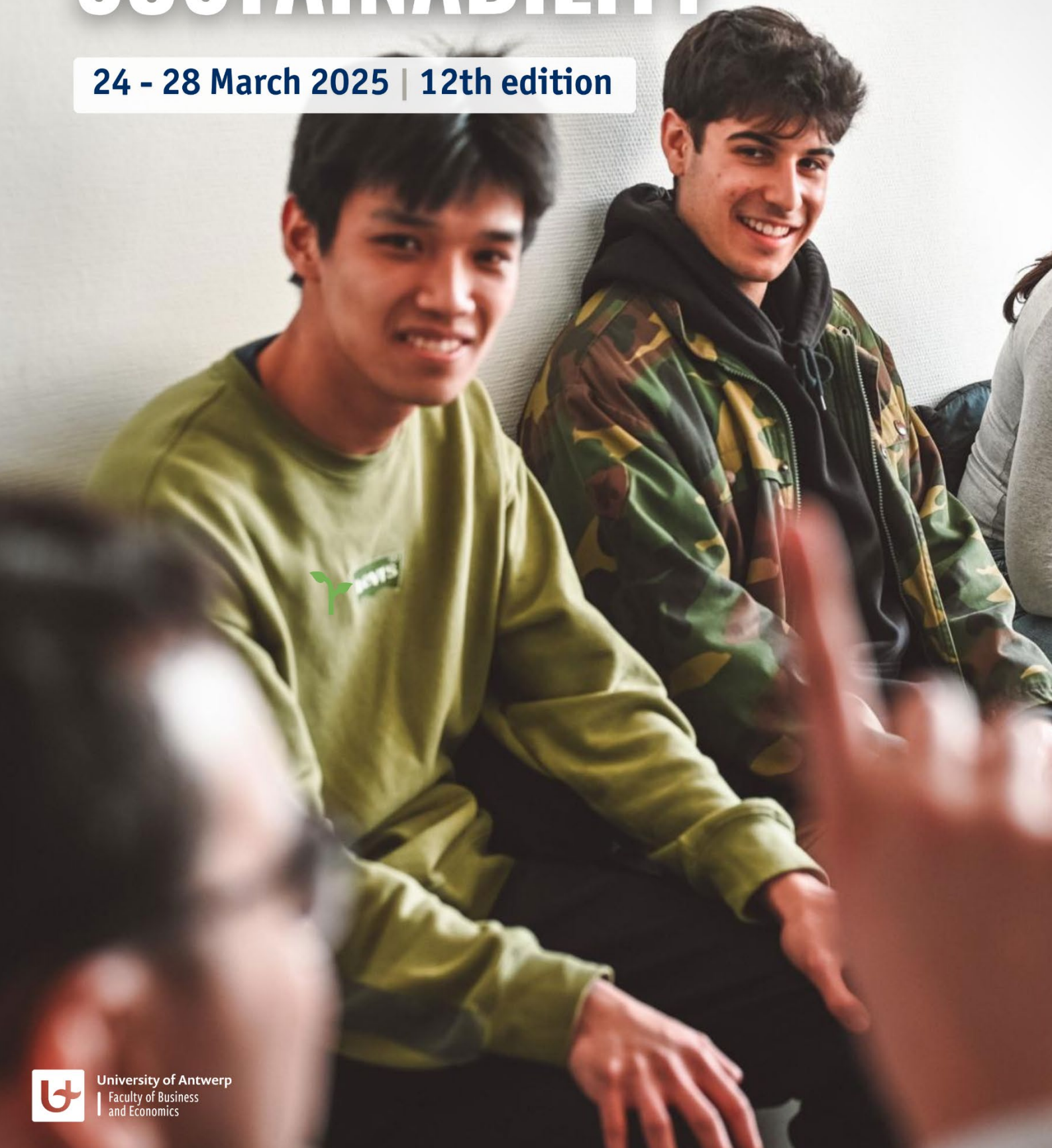


INTERNATIONAL WEEK ON SUSTAINABILITY

UNIVERSITY
OF ANTWERP
BELGIUM

24 - 28 March 2025 | 12th edition



University of Antwerp
| Faculty of Business
and Economics

Table of contents

Table of contents	2
1. What is the International Week (I-Week) on Sustainability?	3
1.1. Theme of sustainability.....	3
1.2. International and interdisciplinary context	3
1.3. Hybrid format	3
1.4. Learning goals	3
2. Programme and workload	4
2.1. Introductory sessions.....	4
2.2. I-week on Sustainability.....	4
2.3. Finalise assignments	4
3. Evaluation	6
3.1. Group paper and presentation	6
3.2. Individual components	6
3.3 Attendance	6
3.4. Deadlines	7
3.5. Certificate and grading	7
4. Transportation and accommodation (for on-campus presence).....	7
4.1. Traveling to Antwerp	7
4.2. Accommodation in Antwerp.....	8
4.3. Campus – University of Antwerp	8
5. Interested?	9
6. More information	9

1. What is the International Week (I-Week) on Sustainability?

The I-Week on Sustainability offers insights on the **theme of sustainability** (in a broad sense) in an **international and interdisciplinary context** (speakers, students, topics). It is offered in a **hybrid format** in which students can either participate on campus or online.



1.1. Theme of sustainability

The I-Week focuses on the topic of sustainability, which refers to the **long-term survival chances of a system based on interactions with many other subsystems and a fair distribution of resources and opportunities**. Sustainability can be approached and analysed in different contexts, such as the geographical context (per country, per continent, in EU, in ASEAN , etc.), the industrial context (sector/type of organisation) or the functional context (marketing, finance, production, strategy, etc.). In the different lectures/workshops these different contexts will be illustrated and discussed. In plenary sessions the global issues of sustainability will be presented by international academics as well as (business) managers. These sessions will illustrate how theory is put in practice. Specific themes or contexts can further be discussed in smaller groups. A group work helps students to learn how international organisations set up their sustainability strategy.

1.2. International and interdisciplinary context

This International Week provides a great opportunity for students to **acquire a global perspective and intercultural skills in a course specific context**. Students will participate in interactive lectures delivered by international visiting professors or business managers with international experience. Moreover, students will have the opportunity to closely and intensely work in international student groups. During an interdisciplinary day, students listen to an interdisciplinary debate and learn how to tackle a “wicked” problem together with students from other faculties. For an optimal learning experience, students should be very fluent in English.

1.3. Hybrid format

The I-Week takes place in a hybrid learning environment: it can be followed **online or on campus, with a few sessions organised online for everyone**¹. All sessions will be livestreamed for international students participating online, using a central platform. All sessions will also be recorded and made available for everyone.

1.4. Learning goals

- relate the overarching theme of the international week to the knowledge acquired in the different areas of business administration and business economics
- view the overarching theme and these areas from an international perspective
- apply gained knowledge in an international team with the acquired intercultural skills
- produce a well-structured short report and video or PowerPoint presentation in English, in which creativity and the capacity to synthesize are key
- reflect ethically and critically on your topic within sustainability

¹ Some home universities will let students choose about whether they participate online or on campus, other universities will predefine the format. Students should consult their home university for more information. Since exchange students at UAntwerp are physically in Antwerp, they are required to participate on campus.

2. Programme and workload

In 2025, we organize our **12th edition!** The I-Week will be held from **Monday 24 March to Friday 28 March 2025**, with online introduction sessions before the I-Week and finishing assignments in the week after I-Week:

Introductory sessions (online)	Friday 7 March 2025 Friday 14 March 2025 Friday 21 March 2025 (All sessions: CET 13:00-15:00)
I-Week on Sustainability (hybrid) (Friday: online for everyone)	24-28 March 2025, CET 9:00 – 17:00 Optional activities for students on campus: <ul style="list-style-type: none">• City visit in Antwerp: 23 March (Sunday afternoon)• Visit to Circuit Antwerp: 24 March (Monday evening)
Finalise assignments (online)	Week of 31 March 2025

I-Week is a **3ECTS** course, which entails a workload of about **75-90 hours**.

2.1. Introductory sessions

In the weeks before I-week, students will, in online sessions for everyone, learn the **basics of sustainability** and **how to get the most out of their group work**. For their group work, students will have sessions on team work and intercultural cooperation, and already get to know their group members.

2.2. I-week on Sustainability

During the hybrid I-week on Sustainability, in which we welcome many students online as well as on campus, students will participate in **many interactive plenary sessions, smaller workshop sessions and an interdisciplinary day on Wednesday**. The lectures and workshops are delivered by speakers from various companies and social/non-profit organizations, such as Umicore and Pairi Daiza, as well as speakers with an academic background. The interdisciplinary day on Wednesday is one of the highlights of the week, in which business and non-business students and speakers come together to discuss airport development from a sustainability perspective from different angles.

A **draft programme** is displayed on the **next page**. The final programme will be made available the latest after the first introductory session on Friday, 7 March 2025.

2.3. Finalise assignments

In the week after I-Week, students will need time (approx. 2 days of 8 hours, depending on how much work was done before) to finalise their group paper and individual assignments (see further). No sessions are planned but it is possible to still receive feedback for the group work, if necessary.

Time CET	Online	Online	Online	Antwerp	On campus - K001	On campus - K001	On campus - K001	On campus - K001	Online	Time CET		
	Friday 7 March	Friday 14 March	Friday 21 March	Sunday 23 March	Monday 24 March	Tuesday 25 March	Wednesday 26 March	Thursday 27 March	Friday 28 March			
9.00					Welcome session	Plenary session	Interdisciplinary day Topic: Airport development from a sustainability perspective	Plenary session	Group work	9.00		
10.00					Break	Break		Break		10.00		
10.15					Plenary session	Plenary session		Plenary session		10.15		
11.15					Break	Break		Break		11.15		
11.30					Plenary session	Plenary session		Closing wrap-up		11.30		
12.00								Lunch break	12.00			
12.30					Lunch break	Lunch break	Lunch break		Lunch break		12.30	
13.00	Introduction session: Sustainability	Introduction session: Intercultural cooperation	Introduction session: Team work	Arrival international students				Presentations	13.00			
14.00				Optional city visit	Group work with feedback	Parallel workshops	Group work with feedback		Port city visit (on campus)		14.00	
15.00	Deep time walk (online)							15.00				
15.30								15.30				
17.00 to 20.00						Optional visit to Circuit Antwerp (incl. food)					17.00 to 20.00	

3. Evaluation

Students are evaluated based on **group and individual** delivery formats.

3.1. Group paper and presentation

Students are divided in **international groups of around 6 students** to work on a paper and presentation of a selected organization and topic. Most international student groups will be hybrid groups in which some students follow the I-Week online and some on campus. During the week, dedicated timeslots are foreseen to work on the group assignment and feedback moments with a dedicated professor per group will be planned.



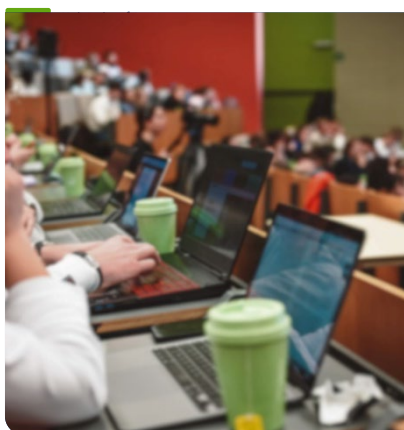
3.2. Individual components

Students will work on an **individual assignment**, in which they make a blog or vlog about their personal experience during I-Week. The goal is to be creative and being able to make snackable and interesting content for a potential network on a social platform for professionals like LinkedIn.

Students are also required to complete a **self-test on intercultural competences** in which they assess their competences before and after the I-Week, and they also make a **peer review** for the group work. This peer review might affect a student's personal grade for the group work.

3.3 Attendance

As everything to be learnt from the I-Week is situated within approximately one month, it is very important for students to be present during the sessions (or to watch the recordings as soon as possible afterwards, within 24 hours). Therefore, we adhere to the following requirements regarding attendance:



Attendance in all online sessions before the start of I-Week is required and will be checked. If a student misses two or more of these sessions without notice by the end of that particular session, that student will be removed from the group for the group work, and thus cannot pass this course.

As the group work is a very important part of the I-Week, **we require all students to be present during the feedback sessions with their professors.** If a student is not present during these sessions without notice before the start of the session, this student could be removed from the group, and thus cannot pass this course.

For on-campus participants in the week of 24-28 March: Attendance during the I-Week itself is required on campus and will be checked. We provide direct access to speakers, an on-campus international experience, exclusive workshops, snacks and drinks, etc. This is all an added value to the students' experience so out of respect for the speakers and our organisation, we expect everyone's presence on campus and arrival on time.

For online participants in the week of 24-28 March: Attendance during the I-Week sessions is required. If a student misses one session during the I-Week, due to e.g. time zone, power shortages or a bad internet connection, recordings of the plenary sessions are made available. It is important to be present as much as possible since most of this learning experience runs over just one week. Students need the input from the sessions for their group work and the individual assignment.

3.4. Deadlines

Assessment method	Deadline
Group paper and presentation (80%) with peer review which can affect a student's individual grade	Presentation: 28 March 2025, CET 13:00 Paper: 4 April 2025, CET 14:00 Peer review: 4 April 2025, CET 14:00
Individual assignment (20%)	4 April 2025, CET 14:00
Self-reflection on intercultural competences (-1/20 if not done twice)	Once before I-Week Once after I-Week: 4 April 2025, CET 14:00

3.5. Certificate and grading

All international students will receive a **certificate** from the University of Antwerp indicating their presence during the week and their grade. To guarantee the quality in the group work for all students, students are only allowed to participate if they **get an actual grade** (and not a pass/fail) for this course at their home university.

4. Transportation and accommodation (for on-campus presence)

4.1. Traveling to Antwerp

Antwerp is located in the centre of Belgium and is easily accessible by plane, train, car and bus. The international **airport** of Brussels (Zaventem) is the most frequently used getaway to Antwerp, but students might also want to consider the low-cost airport of Brussels South or the very nearby airport of Antwerp itself. Antwerp is also very easy to reach by **train**. International railway lines link Brussels and Antwerp to several other major European cities. Did you know that Antwerp's Central train station was awarded as the most beautiful railway station in the world by New York's Mashable in 2014? Lastly, Eurolines and Flixbus **buses** also frequent the city centre of Antwerp, which might be the cheapest option to get in Antwerp.

For more information and details, please refer to this webpage:
<https://bit.ly/3B553Wu>

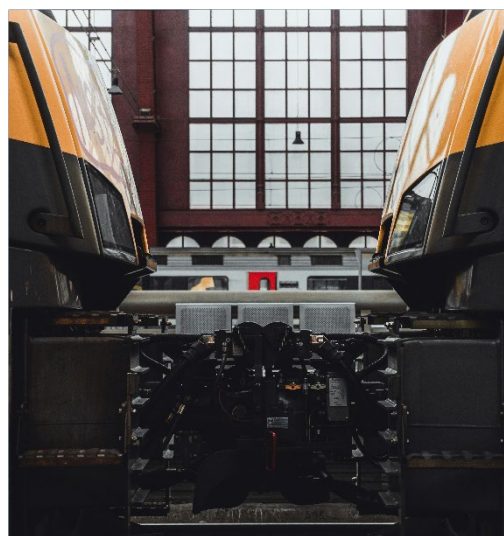


Figure 1: Photo by Jonas Jaeken on Unsplash

4.2. Accommodation in Antwerp

Antwerp has many different accommodation options to offer, ranging from student rooms and Airbnb over youth hostels to classic hotel rooms. A list of accommodation options can be found below. The university will only share this info and is not responsible for the accommodations themselves. For some accommodations, a discount is available for UAntwerp students and staff. City tax in Antwerp is 2,97 EUR p.p. per night.

If you want to find sleeping arrangements for your whole group of students in one place, then please contact us via iweek@uantwerp.be and we will try to help you with e.g. extra group discounts where possible.

Prices

€	30-50
€€	50-105
€€€	105+

Hotels	Price	Discount
A-Stay	€€€	Code 'promouantwerp'
Citybox	€€	15%: code 'UA15%'
Holiday Inn Express City Centre	€€€	
Holiday Inn Express North	€€	
Ibis Antwerp Centre	€€	
Ibis Budget Antwerp Central Station	€€	

Hostels	Prices	Discount
The Ash	dorms: € private rooms: €€	
Youth Hostel Pulcinella	dorms: € private rooms: €€	10%
YUST Antwerp	dorms: € private rooms: €€€	15%

For **studios and apartments**, we advise you to check [AirBnB](#).

4.3. Campus – University of Antwerp

The I-Week takes place at:

City campus (CST), Room Aula Rector Dhanis (S.K.001), Kleine Kauwenberg 14, 2000 Antwerp.

5. Interested?

If students want to participate in I-Week, they need to:

- Be **very fluent in English**, both written and spoken
- Send in their applications via their home university to iweek@uantwerp.be and henrich.brunke@uantwerp.be by:
 - o **1 December 2024** (on-campus participation)
 - o **14 February 2025** (online participation)

IMPORTANT! The students' home university needs to inform us **by December 1st** if they want to be a participating partner for I-Week 2025, also if all their students will participate online. That way, we can already keep you up-to-date with all the necessary information (therefore, please indicate contact details of you and other colleagues who want to stay up-to-date on all our mailings and want to be invited to an online information session around mid-December) and you still have time until 14 February to invite students to join I-Week online.

Students participating on campus need to check the required documents such as **passport and visa** with their home university/country. Administrative support can be provided by Henrich Brunke (henrich.brunke@uantwerp.be).

When students are officially admitted to the I-Week, it is important that they regularly check their emails from mid-February onwards via the email address they provide. We will also provide the home university as well as the students with a template to fill in all the necessary student information.

6. More information

Read more on the [I-Week website](#):



Or watch our [10th anniversary celebratory video](#)!



In case of questions, please contact:

- Henrich Brunke: henrich.brunke@uantwerp.be
- Professors & assistants of the I-Week: iweek@uantwerp.be