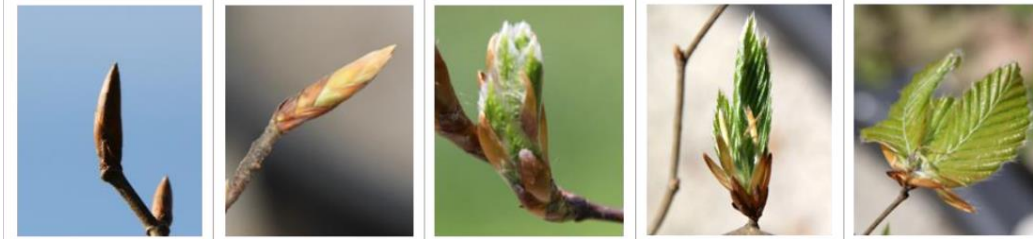


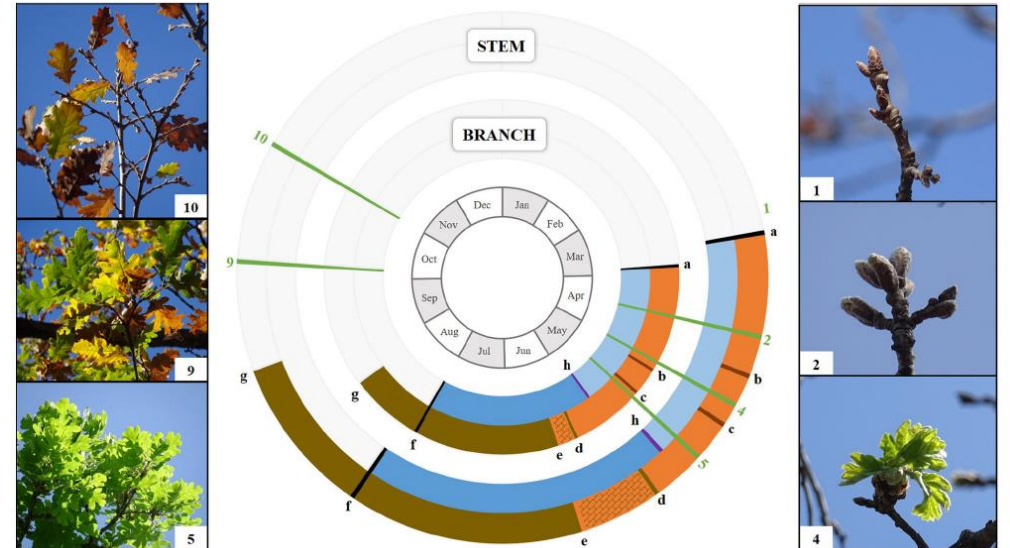
Temperate deciduous forests: seasonal growth and “phenology”

Matteo Campioli and collaborators
matteo.campioli@uantwerpen.be

- Phenology: “*study of recurrent biological events*”



- Leaves, wood, roots..



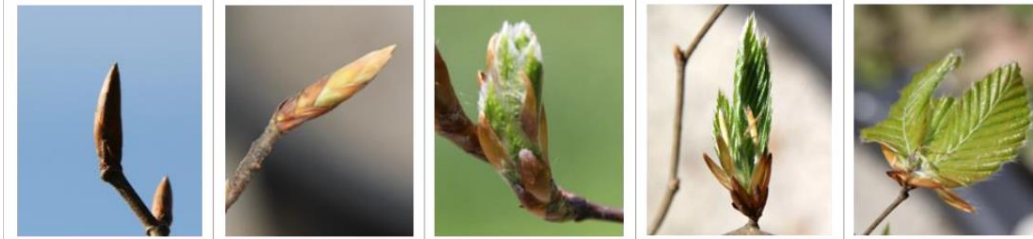
- Environmental drivers of phenology (temp, nutrients, lights etc.)

Global Change Biology (2006) 12, 1969–1976, doi: 10.1111/j.1365-2486.2006.01193.x

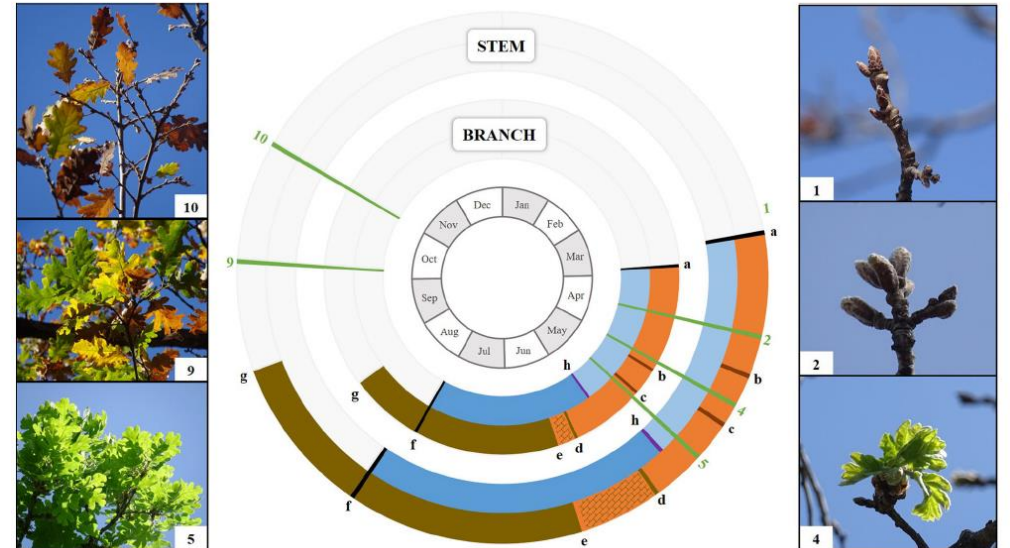
European phenological response to climate change matches the warming pattern

ANNETTE MENZEL*, TIM H. SPARKS†, NICOLE ESTRELLA*, ELISABETH KOCH‡, ANTO AASAŞ, REIN AHASS, KERSTIN ALM-KÜBLER¶, PETER BISSOLLI||,

- Phenology: “*study of recurrent biological events*”



- Leaves, wood, roots..



- Environmental drivers of phenology (temp, nutrients, lights etc.)

Global Change Biology (2006) 12, 1969–1976, doi: 10.1111/j.1365-2486.2006.01193.x

European phenological response to climate change matches the warming pattern

ANNETTE MENZEL*, TIM H. SPARKS†, NICOLE ESTRELLA*, ELISABETH KOCH‡, ANTO AASAŞ, REIN AHASS, KERSTIN ALM-KÜBLER¶, PETER BISSOLLI||

APPLICATIONS

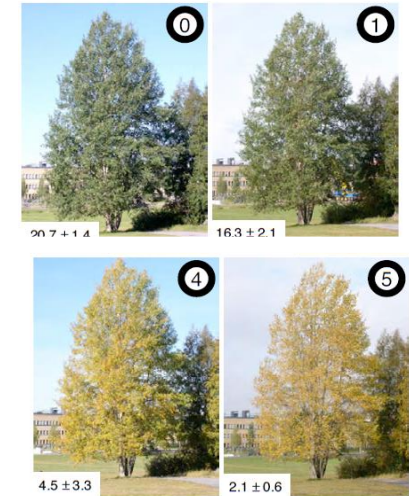
*climate modelling

*forestry

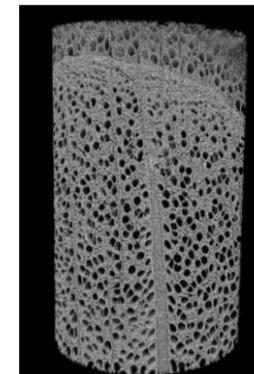
- Impact of “neighbors” on tree bud-burst in mixed forests (plantation) – FIELD WORK SPRING 2022



- Autumn leaf phenology in Flemish forests – FIELD WORK AUTUMN 2022



- Wood phenology – HIGH TECH with LIMITED FIELDWORK



For all MP or IP possible