

Info sheet – “Boswachter” study area

Coordinates: 51°16' N – 4°29' E

Often referred to as “Peersbos – plot B”

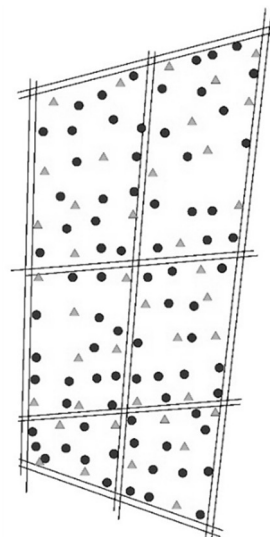
Basic description: mixed broadleaved stand with 73% oak *Quercus robur*, 17% beech and 10% various other trees including very few conifers. The stand is surrounded on most sides by similar forest, on the north there is a pine stand. Local recruitment is low. Return rates of breeders are low compared to other areas, perhaps due to movement into adjacent stands.

Total surface 12 hectare

Total number of nestboxes 1979-1995: 118 with 32mm entrance, 59 with 26mm (except 1979 which had 59 + 59 boxes)

From 1996 to present: 79 with 32mm (circles on map), 39 with 26mm entrance (triangles).

Boxes at 2-3m height.



Basic data collected in all years:

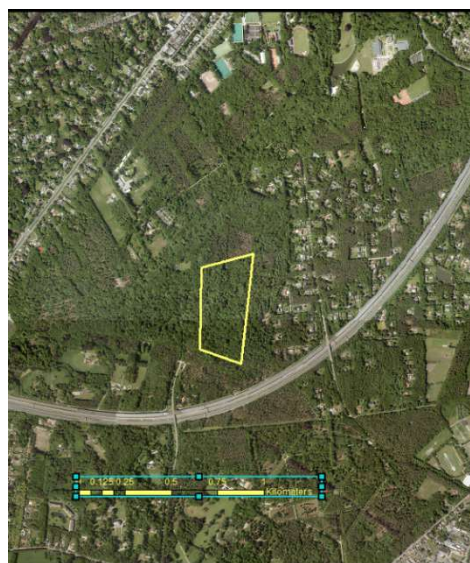
- First-egg date, clutch size, number of fledglings, average fledgling mass
- Identity of male and female parent; body mass, wing and tarsus length, DNA (body feathers)
- Roosting captures in December and February

Additional data in some years only:

- Individual tarsus and body mass of fledglings
- Budburst date, tree size and condition of all trees (N=1558) including the bordering lanes in 2010
- Nest parasite contents

Basic population data: (annual mean and range)

For 1980-1995:



	Great Tit		Blue Tit	
	Male	Female	Male	Female
Number of breeding pairs	45 (28-69)		32 (20-47)	
Return rate of breeders	36 (9-54)	45 (30-69)	31 (7-48)	28 (8-42)
Recruits per breeding pair	0.43 (0.14-0.90)		0.27 (0-58)	
% immigrants (first-time breeders)	71 (55-92)	86 (72-100)	84 (61-100)	96 (86-100)
Capture rate of breeders	88 (62-98)	97 (83-100)	92 (79-100)	97 (81-100)

For 1996-2017:

	Great Tit		Blue Tit	
	Male	Female	Male	Female
Number of breeding pairs	31 (19-77)		32 (21-53)	
Return rate of breeders	30 (3-56)	31 (9-44)	35 (12-61)	28 (10-59)
Recruits per breeding pair	0.31 (0-1.1)		0.16 (0-0.48)	
% immigrants (first-time breeders)	82 (61-100)	89 (76-100)	86 (65-100)	97 (92-100)
Capture rate of breeders	79 (50-100)	94 (79-100)	74 (52-88)	92 (81-100)

Notes:

- We believe nearly all great tits and most blue tits breed in nestboxes, but no data are available
- Throughout the larger forest and the entire study period, different additional plots have been in use, including one bordering on plot B, but with varying numbers of nestboxes and amount of data collected. Thus, some more data are available on immigrants from, and emigrants to these plots.

Key reference: Matthysen E, Adriaensen F, Dhondt AA. 2011. Multiple responses to increasing spring temperatures in the breeding cycle of blue and great tits. *Global Change Biology*, 17:1-16