

### **Cécilia De Decker**

*Head of the Special Evaluation Office of Belgian Development Cooperation Brussels (funding agency of the ECD seminar)*



**Cécilia De Decker** is the Special Evaluator of the Belgian Development Cooperation since September 2016. With a degree in economics, she has been active for 20 years in the field of evaluation and policy analysis. She has coordinated many large evaluations in complex policy systems such as regional economic development plans, innovation policies, training and employment policies, etc. She has been working as a consultant for many years. In 2004, she helped setting up the Office of the Special Evaluator of Development Cooperation at the Belgian Ministry of Foreign Affairs and making it operational. She was in charge of its first strategic evaluations. She also was instrumental in making the office meet professional standards. She then held a management position (2007-2016) in a consultancy company where she conducted assignments and training in the field of policy analysis, monitoring and evaluation. C. De Decker also lectures about policy design and evaluation at ENA DRC, the Centre de Perfectionnement Administratif at Guinea and several Belgian universities.

### **Nathalie Holvoet**

*Co-organiser of the ECD seminar (overall guidance)*

*Introductory session, Module 1 (Relevance of M&E), Module 2 (Assessing national M&E system), Module 3 (Strengthening M&E supply, demand and use), debate, wrap-up session, poster preparation & video*



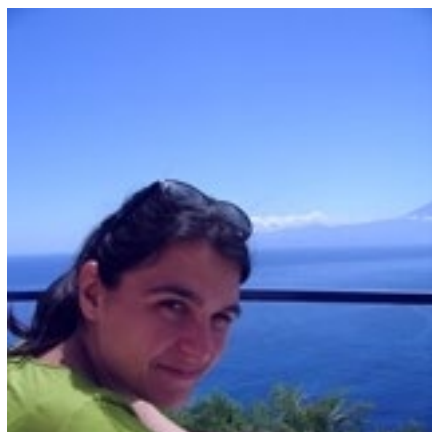
**Nathalie Holvoet** (PhD Applied Economics, University of Antwerp) is a full-time professor at the Institute of Development Policy (IOB), University of Antwerp. She is currently also the chair of the IOB. She has a long track record of academic teaching and training, research and policy advisory work in the area of monitoring & evaluation (methodological aspects, systemic and policy-related dimensions) and gender & development (macro & micro dimensions, including gender budgeting, gender-sensitivity of national policies & institutions & aid, intrahousehold resource allocation). Together with Sara Dewachter and Lisa Popelier she organized a short term

evaluation capacity building seminar in 2015, 2016 and 2018. Nathalie has been/is leading various research projects funded by Flemish Research fund, European Commission, UN Women, etc. She is also involved in various north and south projects of university development cooperation. Current research and evaluation projects more specifically focus on community-based monitoring, use/influence of M&E, evaluability, intrahousehold decision-making and climate change, cash transfers. She has published in different publication outlets and is a member of the European Evaluation Society (EES), the International Development Evaluation Association (IDEAS), the European Association of Development Institutes (EADI) and a co-founding member of the Flemish Evaluation Platform (VEP).

## **Sara Dewachter**

*Co-organiser of the ECD seminar (overall guidance)*

*Introduction, Module 2 (Assessing national M&E system), Module 4a (strengths & weaknesses NES/VOPE & best practices), Module 5b (Social Network Analysis) & debate & wrap-up session & poster preparation & video*



**Sara Dewachter** holds a doctorate in Political Science and is a post-doctoral researcher at the Institute of Development Policy and Management, University of Antwerp. She has experience in (using) social network analysis and qualitative comparative analysis (QCA). Recent research focuses on national evaluation societies, local-level M&E, community-based monitoring and political efficacy. Together with Nathalie Holvoet and Lisa Popelier she organized a short term evaluation capacity building seminar in 2015, 2016 and 2018. Sara is also the alumni coordinator of the IOB and leading a research and capacity building project on the impact of IOB ICP programs on students' knowledge, skills, attitudes and networks as well as their contribution to their organizations and broader development.

## **Khalil Bitar**

*Module 4a (Strengths and weaknesses NES/VOPE & best practices), Module 5a (Equity-focused evaluation)*



**Khalil Bitar** is an independent evaluator and M&E specialist from Palestine. He has over ten years of experience working with multiple national, regional, and international organizations and governmental institutions across the MENA region and Europe. Khalil is the founder of the Palestinian Evaluation Association (PEA) and leader in the MENA Evaluation Network (EvalMENA); former chair and co-founder of the EvalYouth Global Network and co-leader and co-founder of Eval4Action; and a board member and chair of the Fellowship Committee of the newly established International Evaluation Academy (IEAc). He is completing his doctoral studies at the Willy Brandt School of Public Policy in Germany, focusing on evaluation in FCV contexts. Khalil's research interests include evaluation, social justice, youth activism, education, and change/transformation. He is a graduate of the Institute of Development Policy at the University of Antwerp with an Advanced Master in Development Evaluation and Management in 2012.

## **Massiel Jiménez**

*Module 5b (Complex system evaluations)*



**Massiel Jiménez** is currently an evaluation analyst at the Independent Office of Evaluation of the International Fund for Agricultural Development (IFAD), where she contributes to country level evaluations, sub regional evaluations, led project level evaluations and supported thematic evaluations. Massiel has over 8 years of professional experience supporting programme monitoring and evaluation, programme design and country-level cooperation strategies with national level institutions in diverse international organizations and development banks. Massiel holds a Msc in Development Evaluation and Management from the University of Antwerp in

Belgium and a bachelor's degree in Applied Economics from Universidad Centroamericana in Nicaragua.

## **Megan Lloyd-Laney**

*Module 4b Communicating for Policy influence*



**Megan Lloyd-Laney** has worked for more than 30 years in the development sector. She is co-founder and Director of CommsConsult, a consultancy company with offices in the UK and Zimbabwe, and Research To Action, a site dedicated to helping researchers maximise the impact of their work. She has been, at different stages of her career a science journalist, a policymaker, an NGO development worker and a trainer. Megan has quality assured the strategic communication and policy influence of up to £30m global public goods research while working for the Department for International Development (DFID's) Research and Evidence Division. She has developed protocols and guidelines to help researchers systematise their communication throughout the research cycle to maximise uptake; and has conducted numerous evaluations of the policy uptake and impact of multi-country, multi-partnership, long-term research programmes. She has led teams that help policymakers such as the World Bank to understand and meet demand for information, and on improving the effectiveness of knowledge networks, and led a three-year programme for the International Institute for Impact Evaluations (3ie) to monitor the policy influence of 42 Impact Evaluations across Africa. In 2020, she also developed the a Communication and Engagement Strategy for UNHCR Evaluation Services.

## **Jan Van Ongevalle**

*Module 5b (Outcome Mapping)*



**Jan Van Ongevalle** leads the research group “Global Development” at HIVA KULeuven. He has more than 15 years of experience as a practitioner in the education sector in Africa, and 11 years of experience as senior researcher and research manager on various global development issues. His research approach is practice and policy oriented and covers the following main research

areas in the field of global development: complexity oriented planning, monitoring and evaluation and actor focused theories of change, global citizenship education, the SDGs, informal economy and decent work, redistributive social protection systems, trade unions and civil society. He has been using outcome mapping since 2005 as a development practitioner, researcher and consultant. He is particularly interested in outcome mapping because it provides an actor centred and learning oriented planning, monitoring and evaluation method that is well suited for programmes that support complex social change.

## **Lise Vandendriesche**

*SEO visit*

*Evaluation Officer, Special Evaluation Office of the Belgian Development Cooperation (SEO)*



**Lise Vandendriesche**, born in Brussels, has been a member of the Special Evaluation Office team since the end of 2019. Being in charge of evaluations' implementation and subsidies' management related to capacity building in evaluation, she leverages her expertise in development projects management, particularly in monitoring and evaluation, to strengthen accountability and learning dimensions in Belgian development cooperation. With a Master's degree in International Relations complemented by a Master in Human Rights Law, her academic pursuits reflect her deep commitment to understanding and addressing complex international issues. She has been working in the sector of development cooperation since 2010, both for the non-governmental and governmental sector, including on the field in partner countries of Belgian development cooperation.

## **Nico De Winter**

*SEO visit*

*Evaluation Officer, the Special Evaluation Office of the Belgian Development Cooperation*



**Nico De Winter**, lives in Antwerp, and works in Brussels for over 8 years as an expert on International Relations within different ministries. Since the end of 2019 he brings in this

expertise within the Special Evaluation Office at the Ministry of Foreign Affairs where he focusses on M&E as Evaluation Manager and follows up on various national and international evaluation networks. His previous professional experience consists of working for various NGO's and international youth organizations, for a brief time he worked as an independent consultant. He holds a master's degree in Political Sciences (University of Antwerp) and a master's degree in Conflict and Development Studies (University of Ghent).

## **Ivo Hooghe**

*SEO visit*

*Evaluation Coordinator, Special Evaluation Office of the Belgian Development Cooperation (SEO)*



**Ivo Hooghe** (Master in Political science, KULeuven), started working at the Special Evaluation Office in 2006 as evaluation officer and is currently holding the position of Evaluation Coordinator. He served as diplomat at the Belgian embassy in Hanoi in charge of development aid between 2017 and 2021. Over the years he has been involved in a variety of strategic evaluations and developed expertise in evaluation in settings of conflict and fragility. He coordinated a joint international evaluation on conflict prevention and peacebuilding in Eastern DRC and is currently managing an evaluation on the Belgian fragility approach. He was co-author of the DAC Guidance on Evaluating Conflict Prevention and Peace Building Activities, 2012, OECD and contributed to a publication on Evaluation methodologies for aid in conflict, 2014, Routledge.

## **Lobke Maene**

*SEO visit*

*Communication & Evaluation Officer, the Special Evaluation Office of the Belgian Development Cooperation*



**Lobke Maene** holds a master's degree in journalism and another in Conflict & Development. With a background in communication, journalism and digital marketing, she brought a new

dimension to the Special Evaluation Office. Since 2021, Lobke has been working for the SEO, serving as its first Communication Officer. She actively contributes to the growth of the SEO, including tasks like improving the social media presence, ensuring clear communication of evaluation results, coordination of the annual reports, and website renewal. Her role has since expanded, and she now contributes as an Evaluation Officer as well. At the moment she assists in the evaluation of the Belgian fragility approach.