

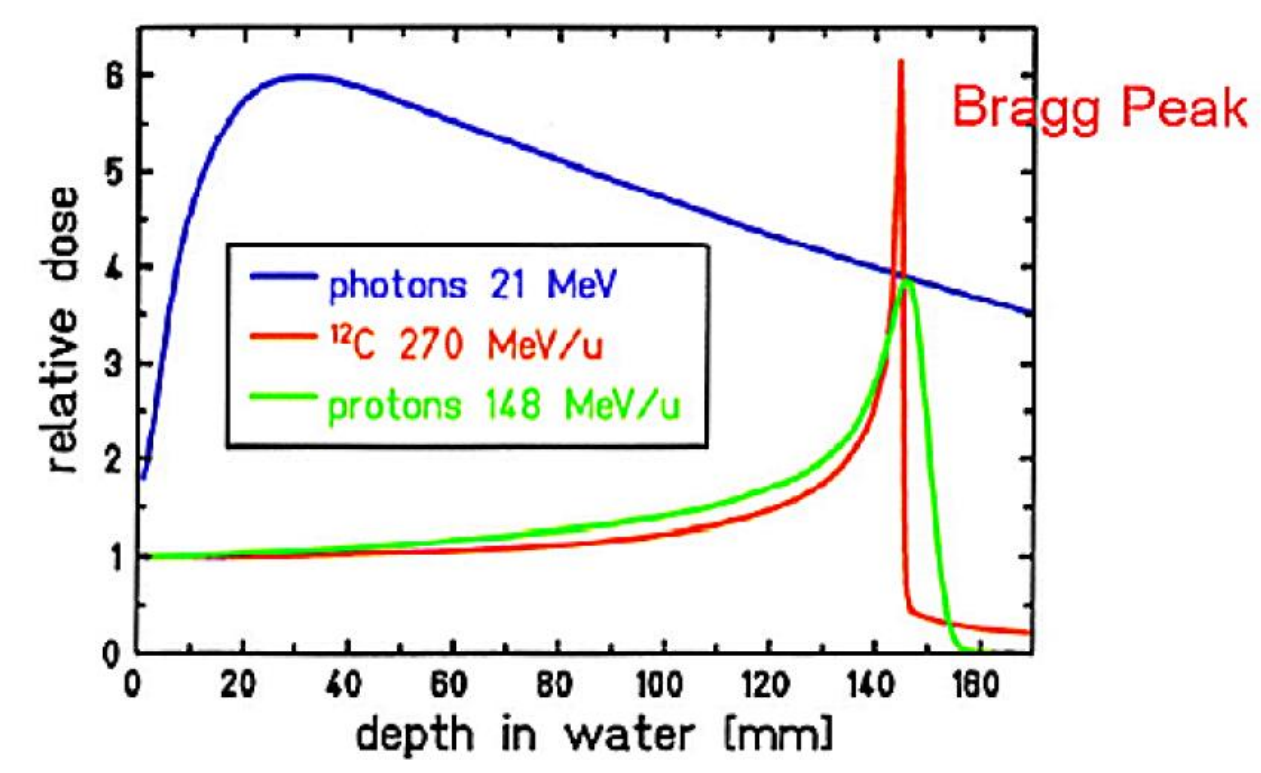
Effects of radiation on human health on Earth and in Space

Oncology

External beam radiotherapy

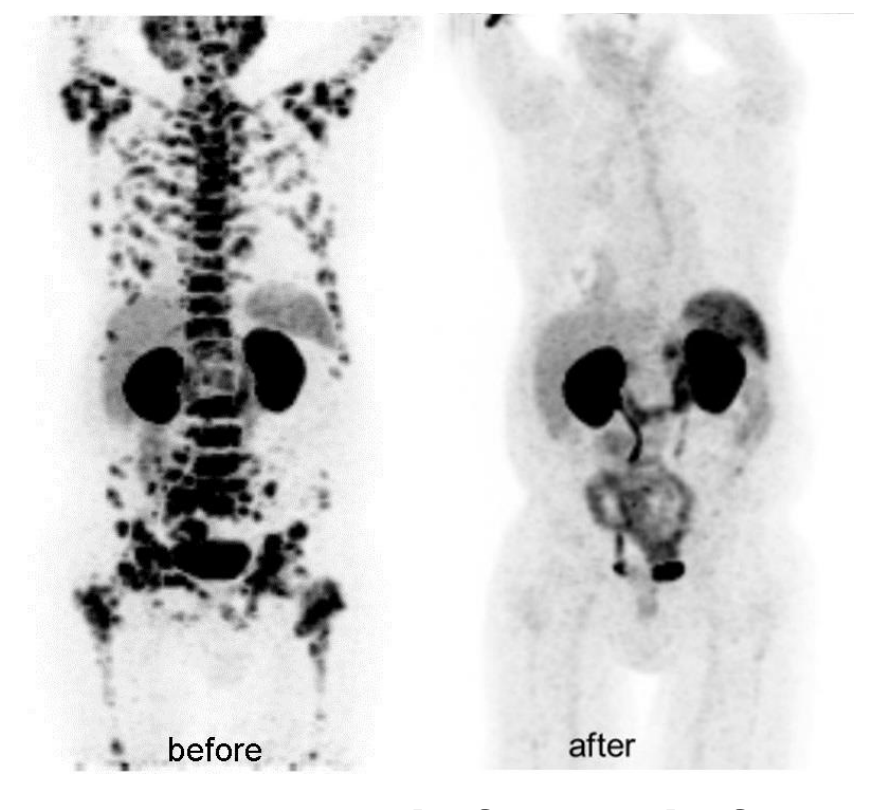
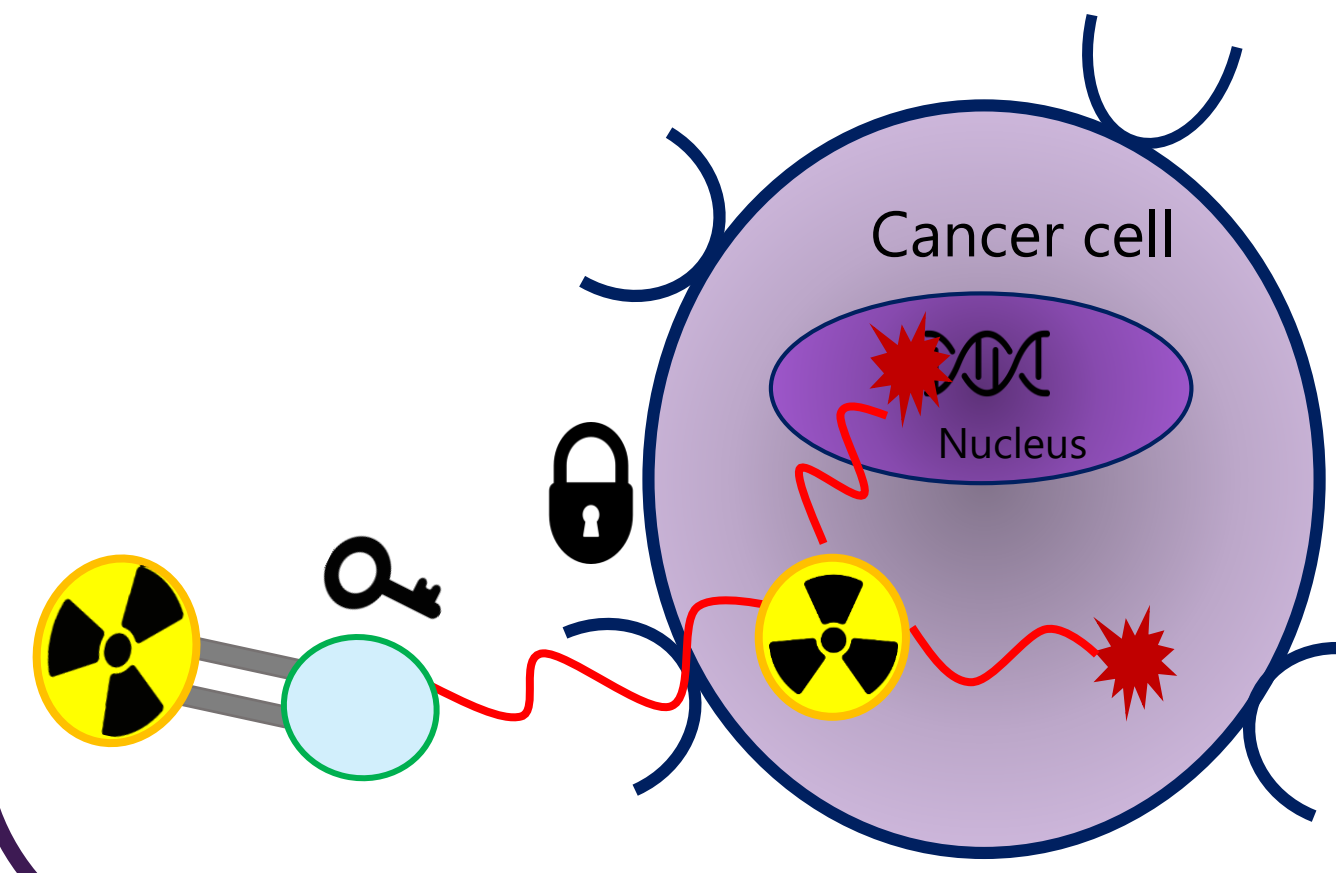


Hadron therapy



Targeted radiopharmaceuticals

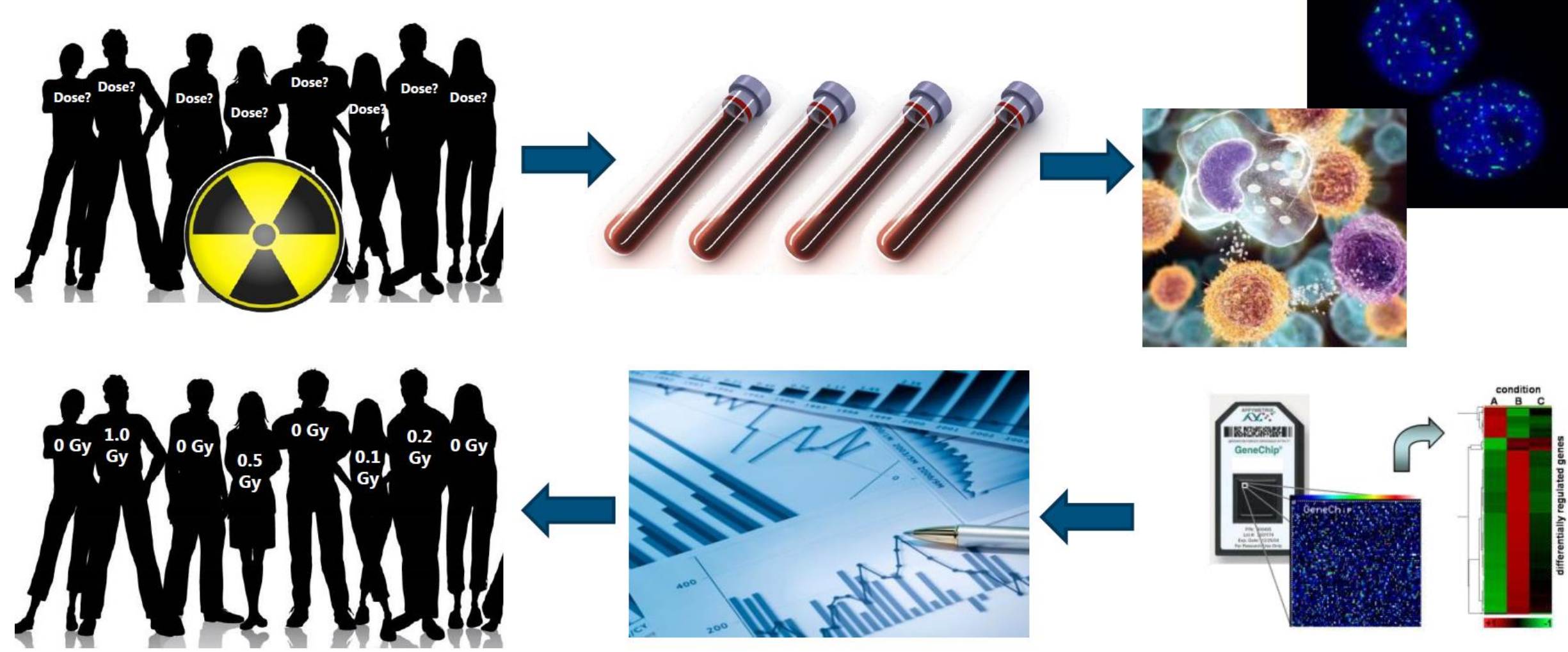
Investigate therapeutic and toxic effects



PET-CT scan before and after ²²⁵Ac-PSMA-617 therapy

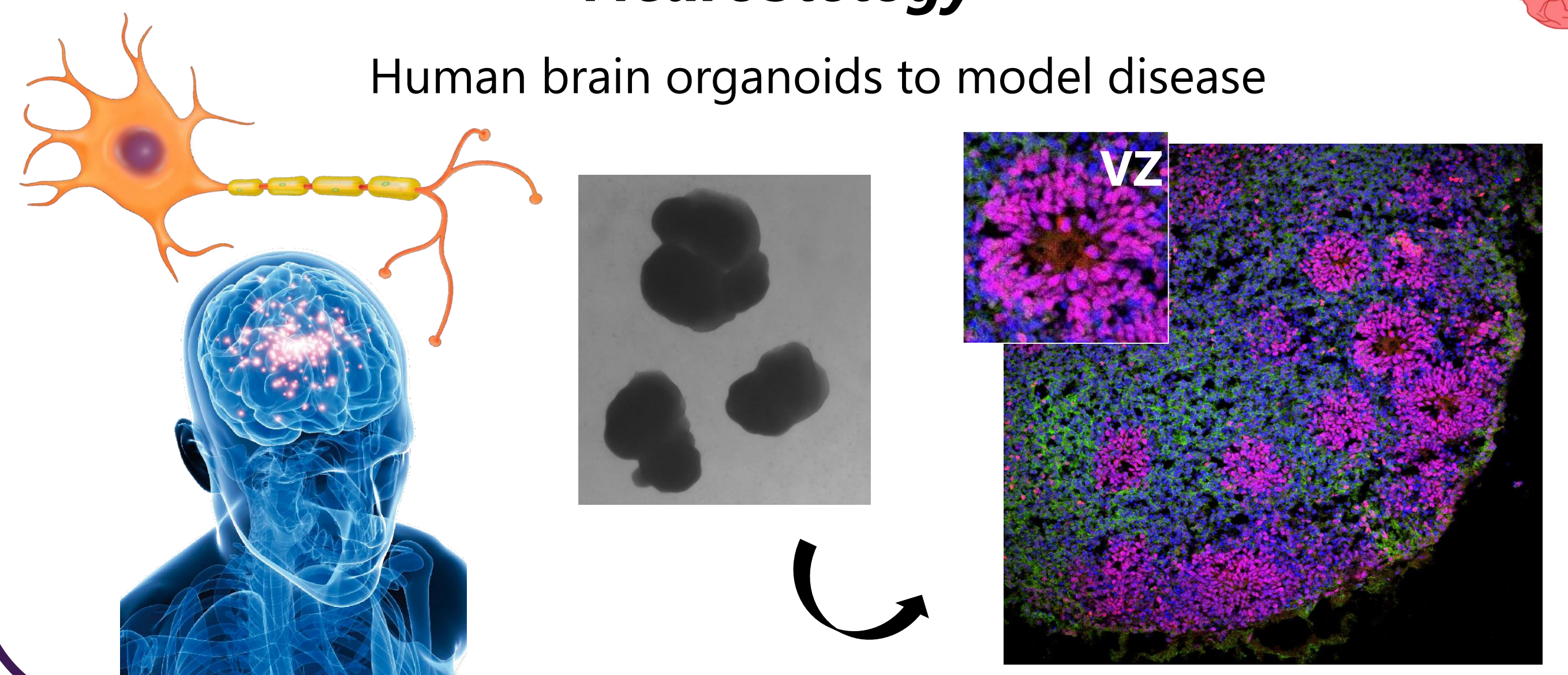
From: <https://ec.europa.eu/jrc/en/news/prostate-cancer-alpha-therapy-shows-impressive-results>

Biomarker research



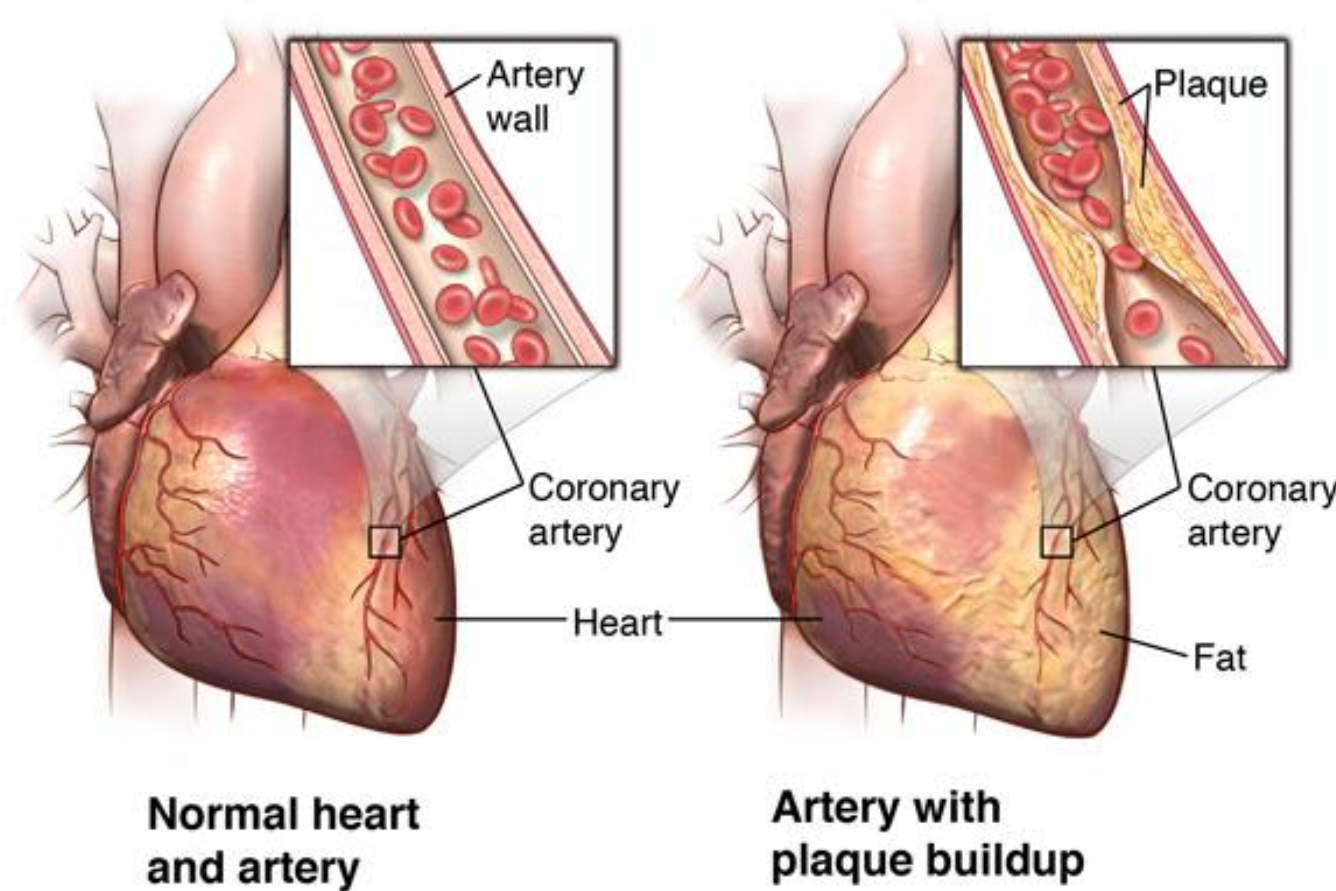
Neurobiology

Human brain organoids to model disease

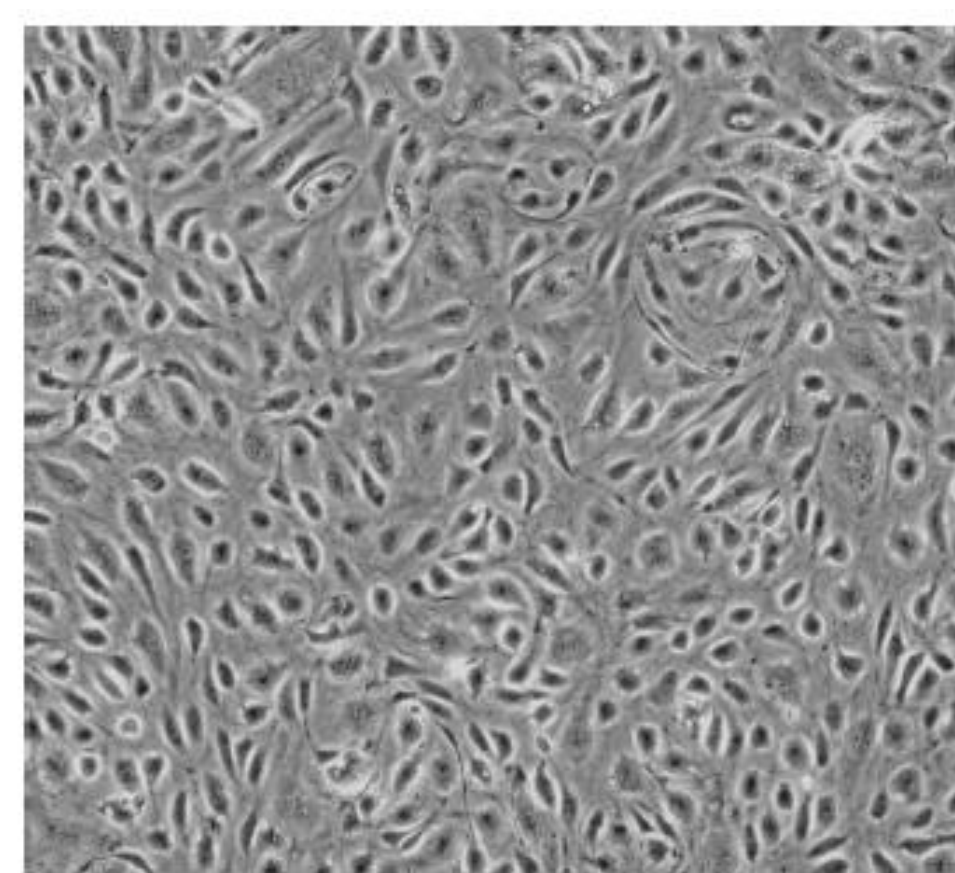


Cardiovascular risk

Atherosclerosis



Endothelial cell culture



Space biology

Astronaut follow up

Study effects of microgravity

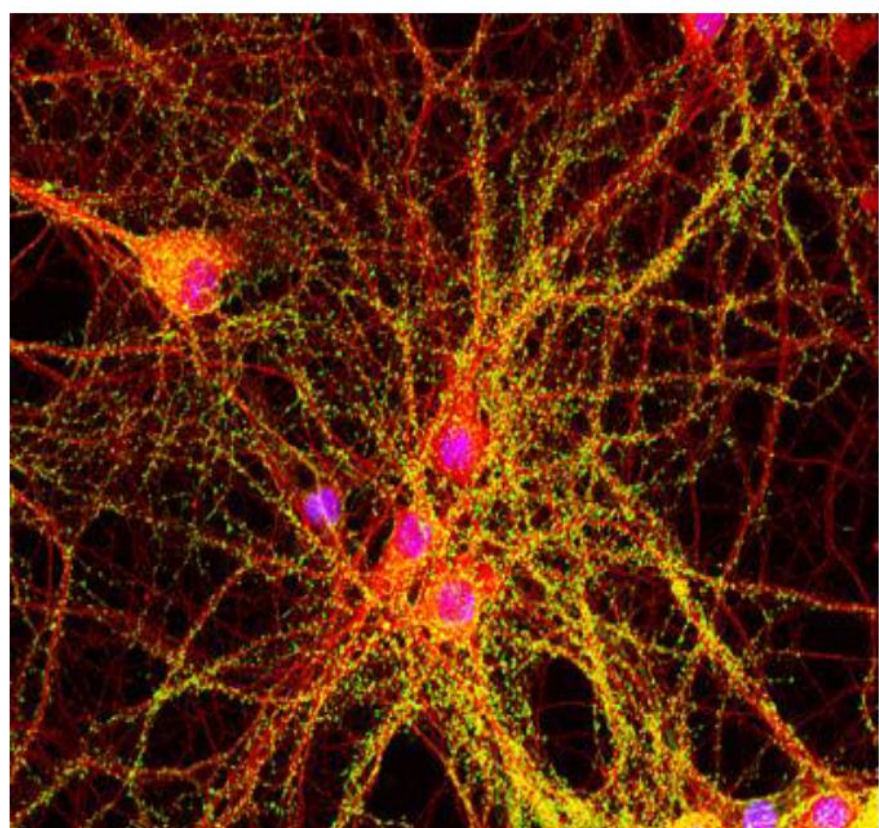
Rotifer experiments

ISS flight and Antarctica ground experiments

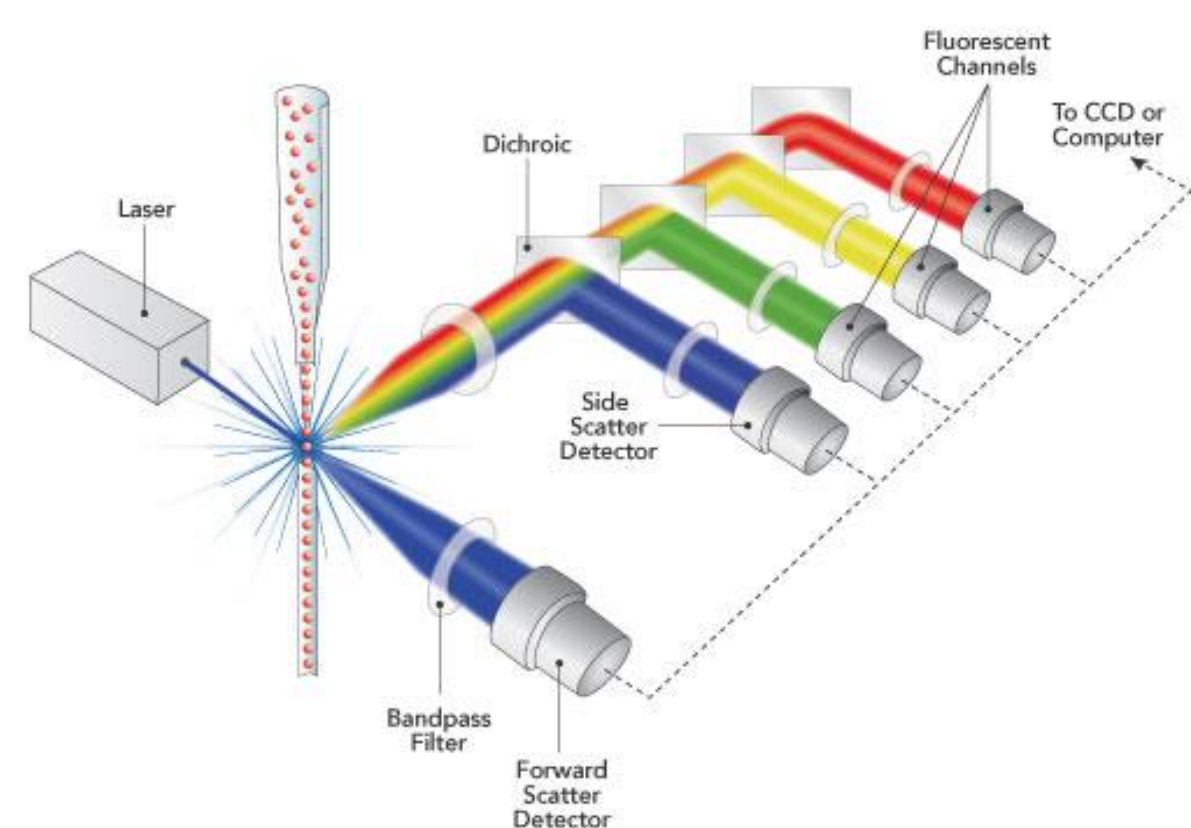


Molecular and cellular biology: variety of research techniques

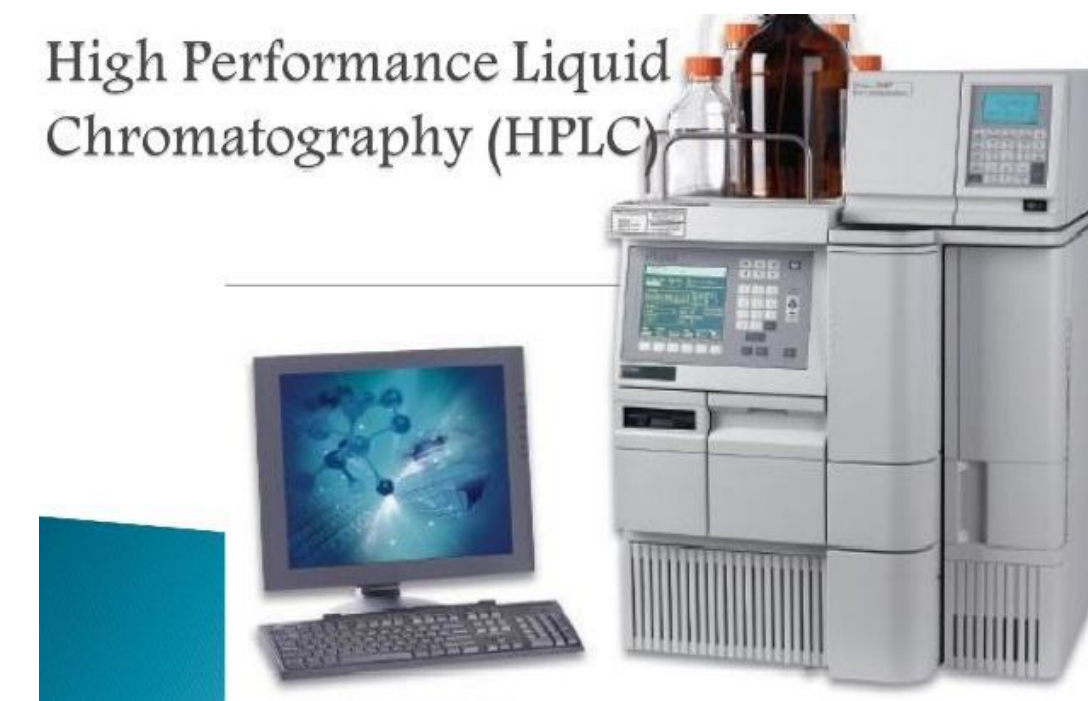
Advanced cell microscopy



Flow cytometry



Transcriptomics & proteomics



Live cell imaging



SCK CEN aims to develop innovative technologies that provide solutions for social issues and requirements in the field of nuclear energy and ionizing radiation

Student facilities:

- Dormitories
- Cafeteria
- Sport facilities

