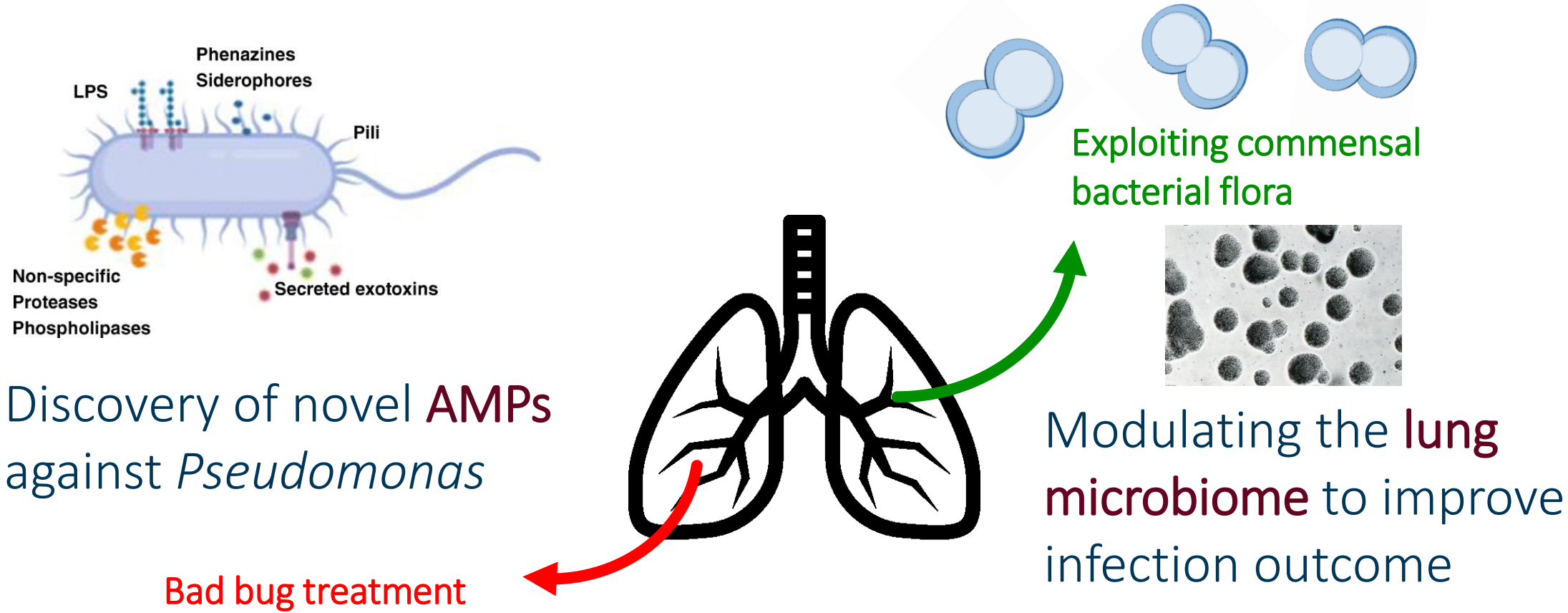




### BACTERIOLOGY

Contact: prof. dr. Paul Cos, paul.cos@uantwerpen.be;  
dr. Davie capoen; davie.cappoen@uantwerpen.be

Looking for well-hidden **persisters** in *Pseudomonas* and *Streptococcus*



Discovery of novel **AMPs** against *Pseudomonas*

Target research against **tuberculous & nontuberculous mycobacteria**

**From gene,**

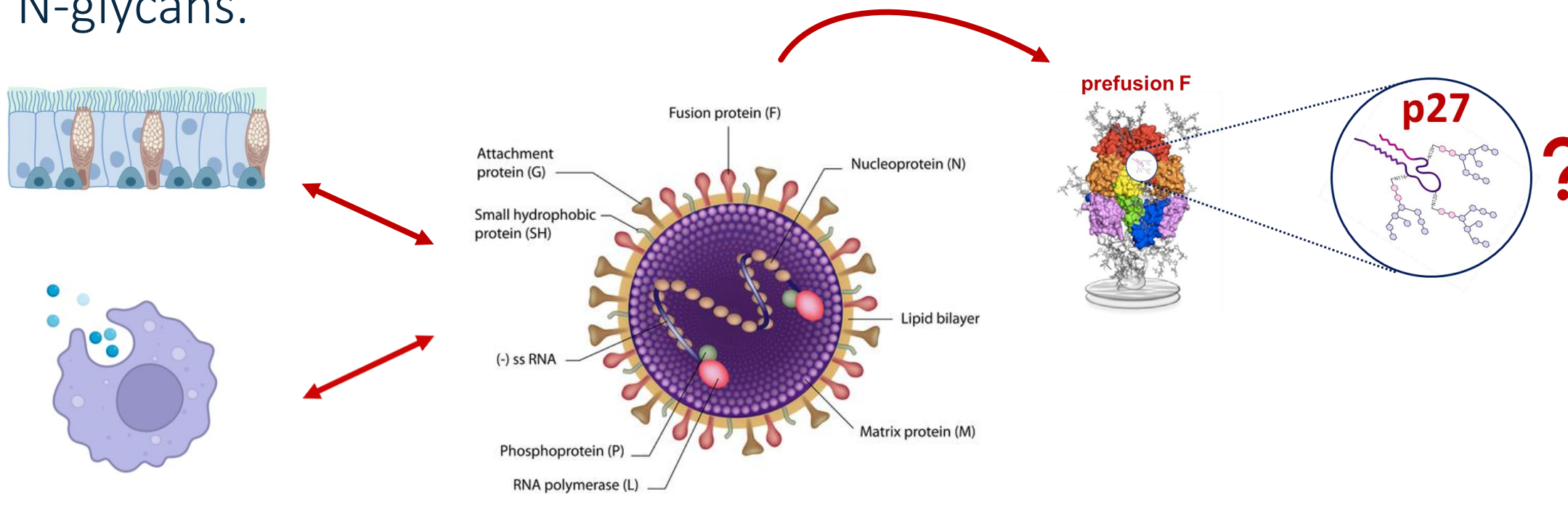
**to target,**

**until drug!**

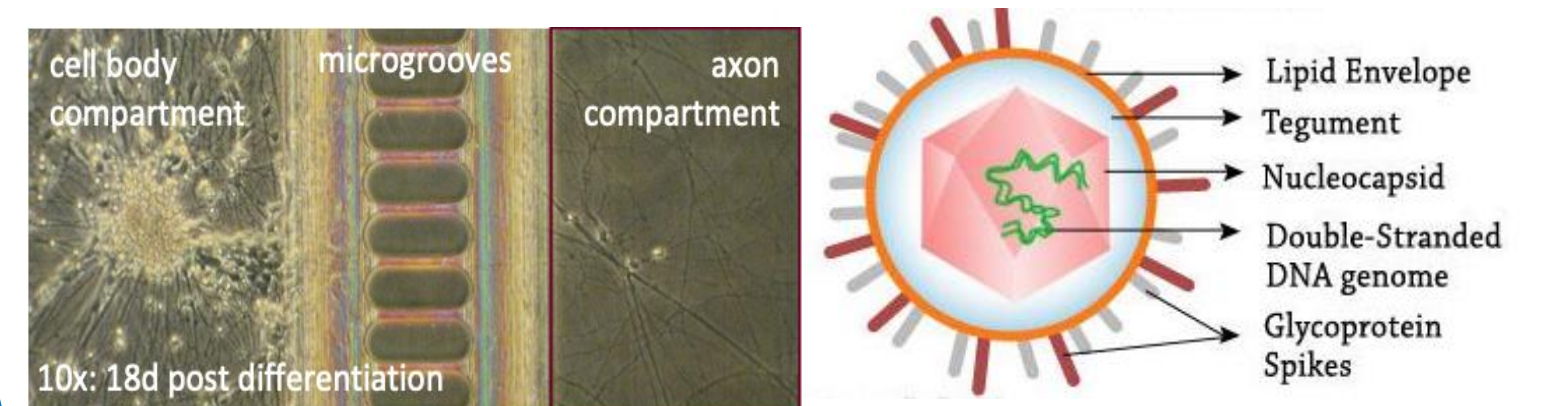
### VIROLOGY

Contact: prof. dr. Peter Delputte, peter.delputte@uantwerpen.be

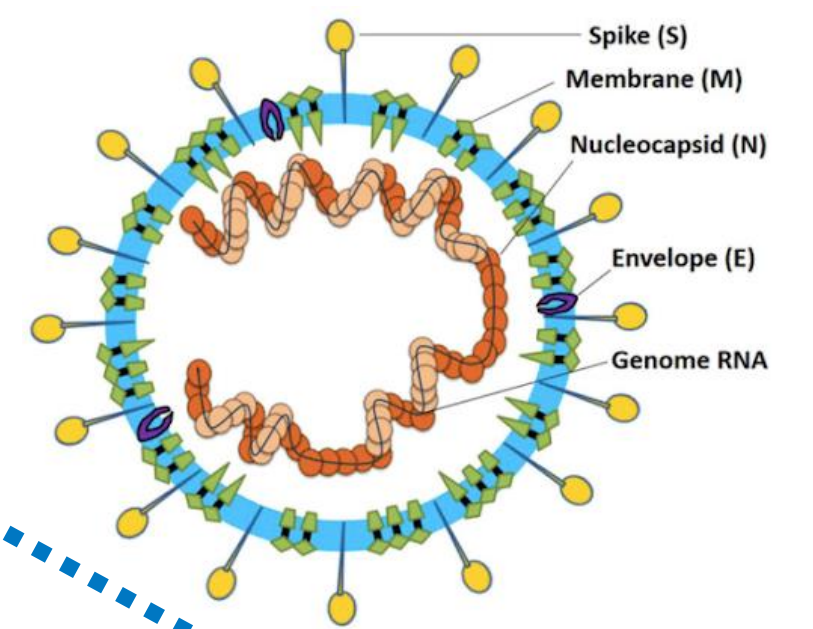
Characterization of clinical **Respiratory Syncytial Virus (RSV)** isolates, modulation of *innate cellular immune responses* by **epithelial cells** and **macrophages** and elucidating the role of the **p27 peptide** and N-glycans.



Evaluation of neurotropic viral infection dynamics in advanced **human iPSC-derived neuronal models**



**Waste-water** based surveillance of **respiratory infections**, such as SARS-CoV-2 and RSV, using PCR-based methods and next generation sequencing



**Join LMPH!**  
A diversity of research within a unified team!

- ✓ European and industrial collaborations
- ✓ State-of-the-art infrastructure
- ✓ Multidisciplinary research

### PARASITOLOGY

Contact: prof. dr. Guy Caljon, guy.caljon@uantwerpen.be;  
dr. Sarah Hendrickx, sarah.hendrickx@uantwerpen.be

Preclinical drug evaluation  
Mechanism of action and resistance  
Transmission studies using the **insect vector**  
Immunological studies on treatment failure and tissue tropism

#### Leishmaniasis

#### African trypanosomiasis

Leishmaniasis	African trypanosomiasis
<p><i>Leishmania</i> spp.</p> <p>PARASITE</p>	<p><i>Trypanosoma brucei</i></p> <p>PARASITE</p>
<p>Sand fly</p> <p>VECTOR</p>	<p>Tsetse fly</p> <p>VECTOR</p>
<p>HOST</p>	<p>HOST</p>

#### Trypanosoma Extracellular

