



Covid-19 and Cancer Global Modelling Consortium

Overview of the Covid-19 and Cancer Global Modelling Consortium (CCGMC) efforts in relation to cervical cancer

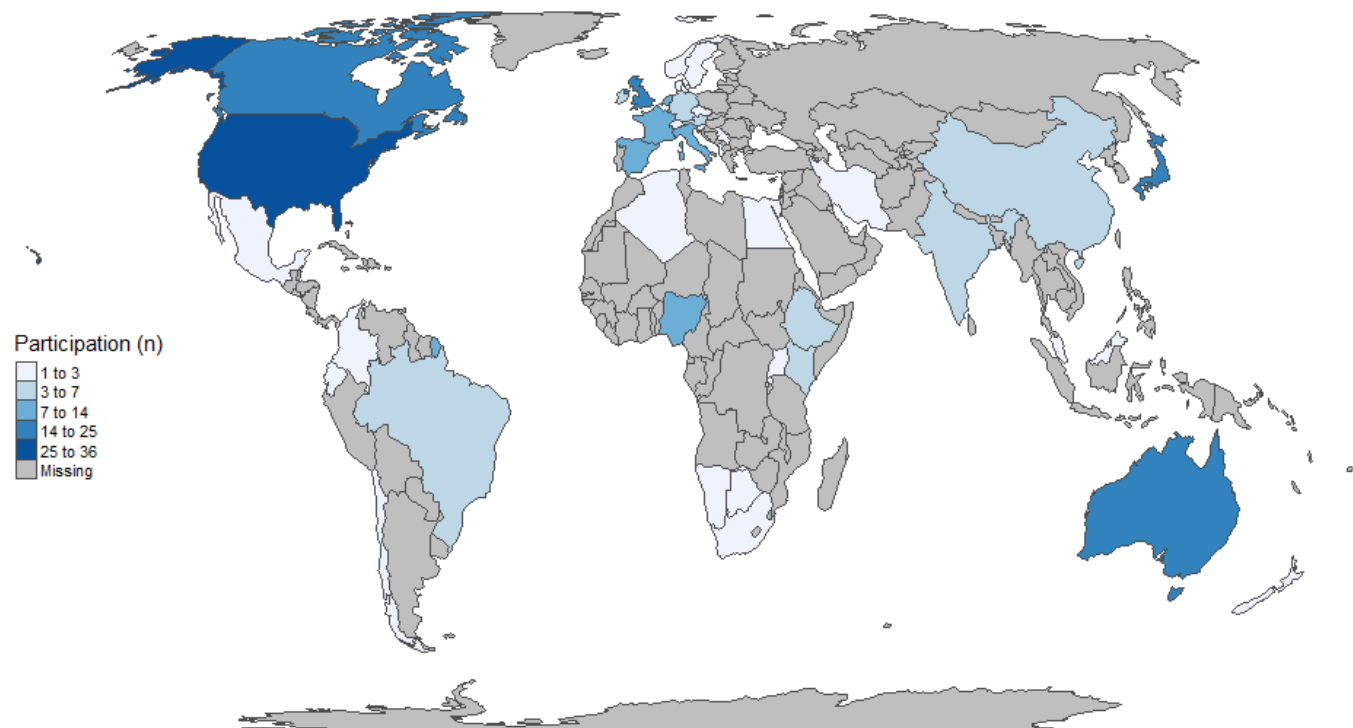
HPV Prevention & Control Board/ CCGMC Technical Meeting
November 12-13, 2020.

Karen Canfell

Director, Cancer Research Division, Cancer Council NSW
Adjunct Professor, School of Public Health, University of Sydney
Adjunct Professor, Prince of Wales Clinical School, UNSW Australia



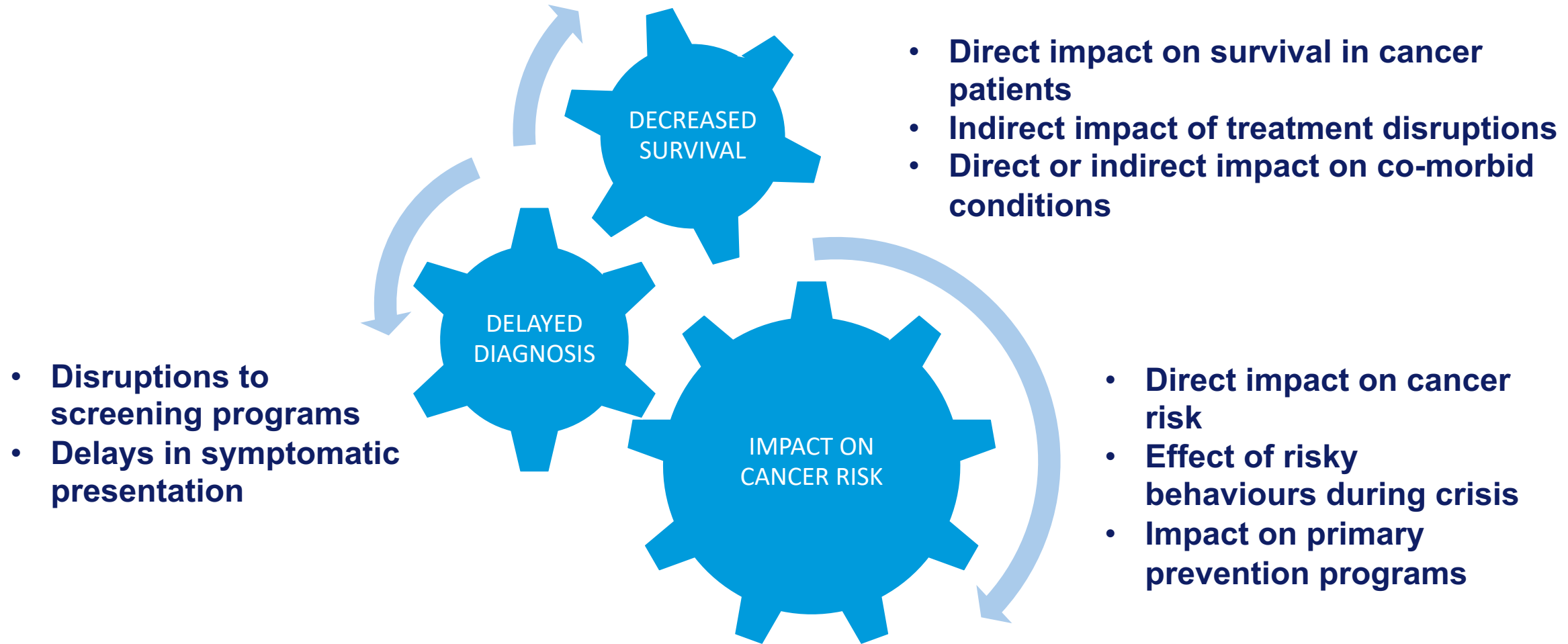
260+ participants
38 countries
165 institutions



Policy-relevant questions driving the CCGMC activities

- What is the quantified impact of the long term impact of the crisis on cancer outcomes?
 - How does this supplement our understanding of the full (not just the acute) health impact of the crisis?
- What are the optimal mitigation/recovery strategies after disruption?
 - How should finite resources be prioritised in the recovery (e.g. limited colposcopy or treatment services capacity)
- What is the potential impact and cost-effectiveness of the accelerated adoption of innovative recovery strategies or new technologies (i.e. 'silver linings')?

Potential impacts of COVID-19 on cancer



Modelling: a formal evidence synthesis

Data inputs

Cancer control effectiveness:

- Survival according to treatment delivery
- Screening effectiveness (test accuracy, etc)
- Primary prevention reach & effectiveness

Pre-pandemic treatment delivery, screening participation & prevention behaviours (*'status quo'*)

Scenarios for timing and extent of disruptions in health services

Pre-existing detailed & calibrated model of cancer development and outcomes in the population

Projected outputs

- Cancer incidence
- Cancer mortality
- Health services utilisation e.g. number of screening tests and treatment procedures
- Costs and cost-effectiveness, HALYs

Prior model validation

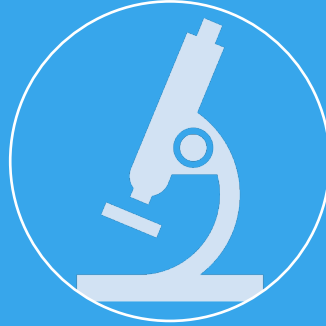
Demonstrate that the outputs for the pre-pandemic *status quo* align with existing evidence

CCGMC Working Groups



WG 1

**Direct impact of
infection on cancer
outcomes &
treatment services**



WG 2

**Impact on cancer
screening & recovery
strategies**

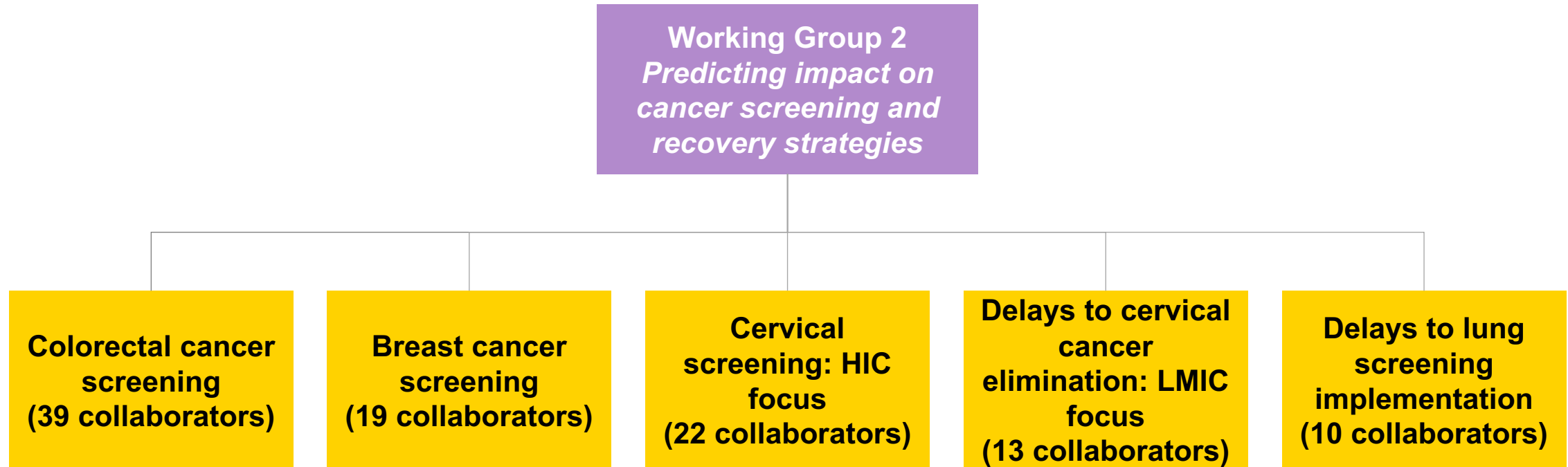


WG3

**Impact on cancer risk
& recovery
prevention strategies**

Shared learnings and cross-collaborations

Working Group 2: Screening



The CCGMC has close links with two other modelling consortia



NATIONAL CANCER INSTITUTE

Cancer Intervention and Surveillance Modeling Network



CISNET is a consortium of NCI-sponsored investigators who use simulation modeling to improve our understanding of cancer control interventions and guide public health research and priorities.



International Agency for Research on Cancer
World Health Organization



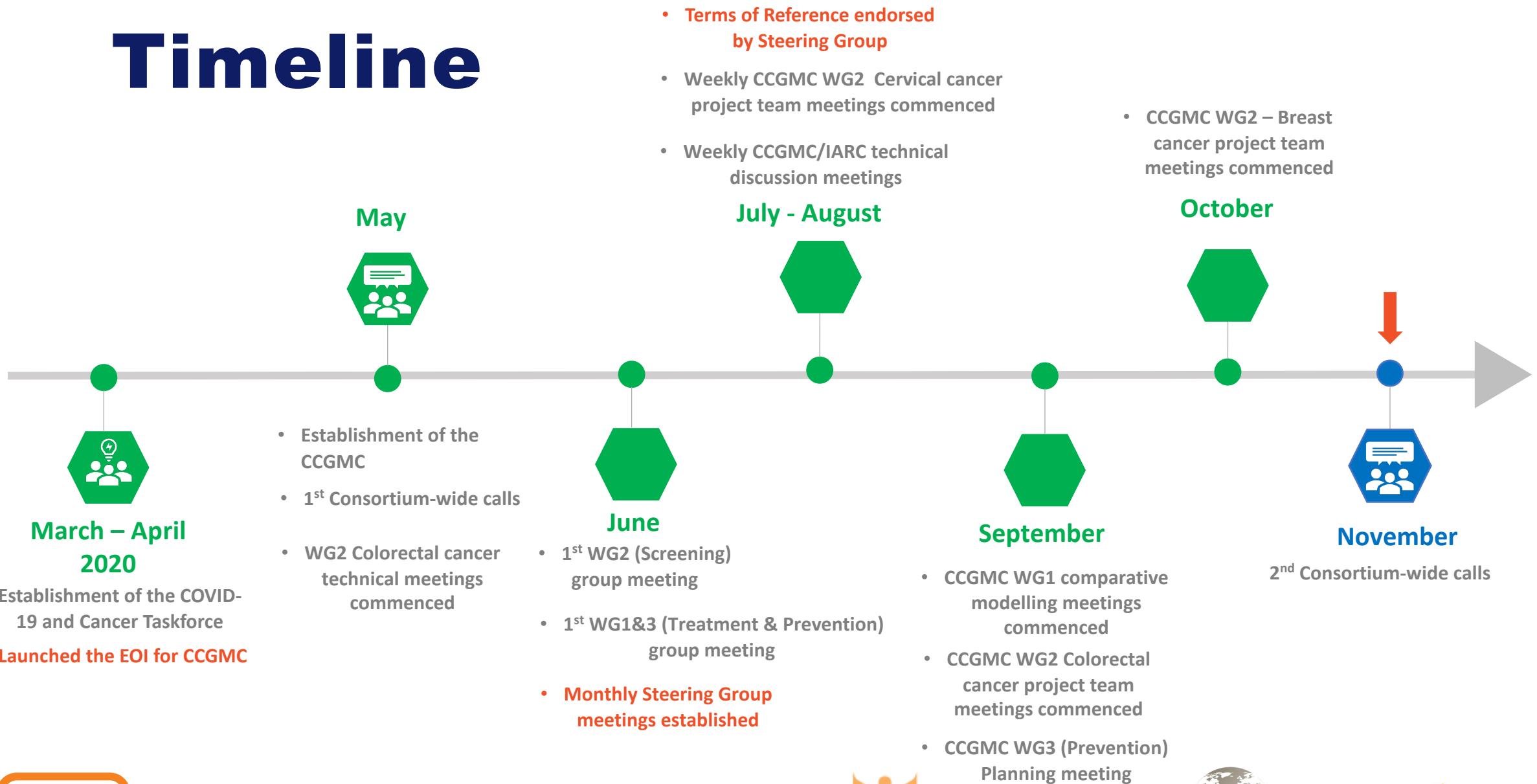
HARVARD
T.H. CHAN
SCHOOL OF PUBLIC HEALTH



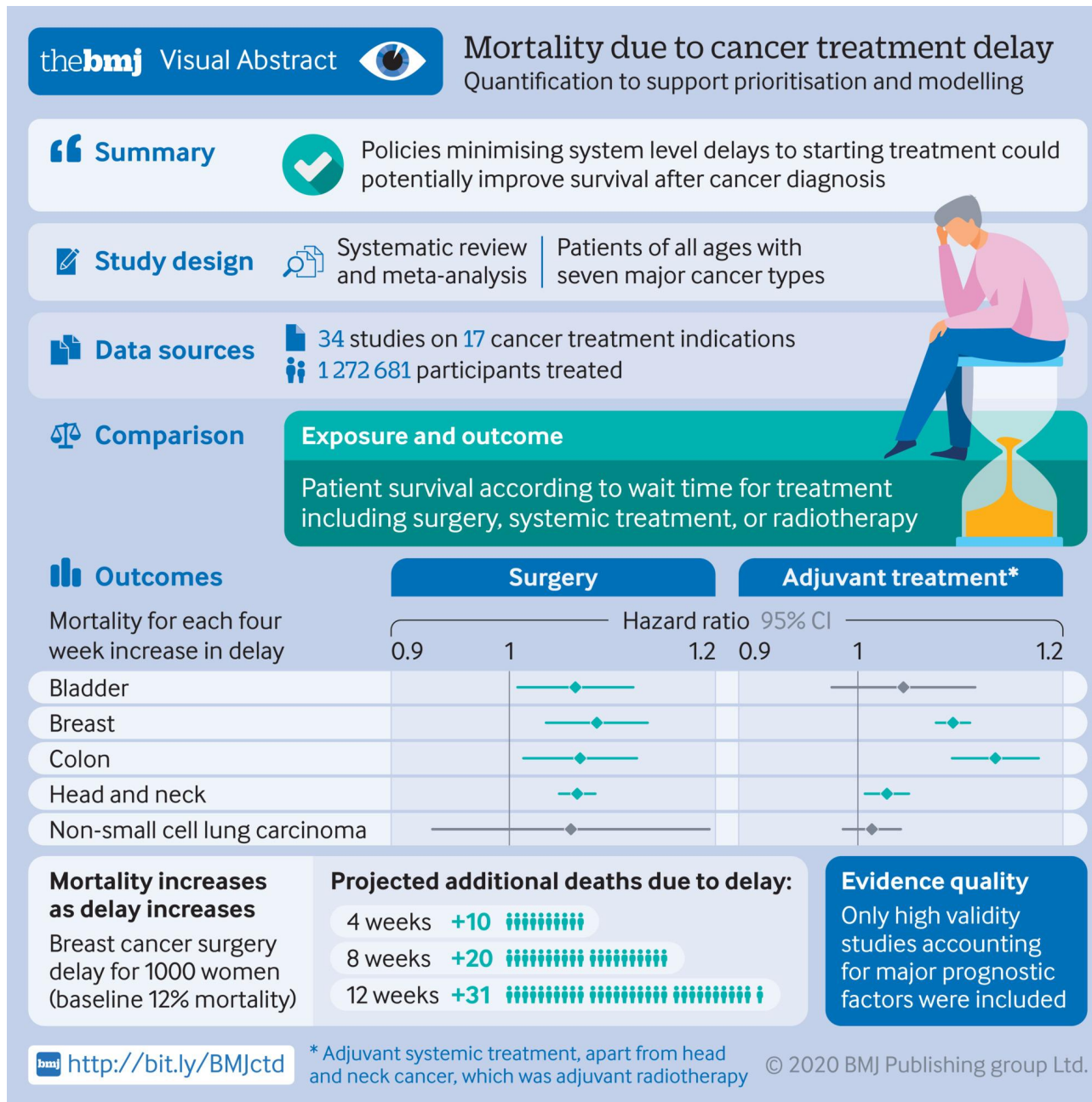
WHO Cervical Cancer Elimination Modelling Consortium (CCEMC)

Impact and cost-effectiveness modelling for 78 LMIC

Timeline



The CCGMC is connected with groups centrally collating relevant data



The elimination launch

Nov 17th 2020



Save the date

FOR THE FIRST TIME EVER,

the world has committed to eliminate a cancer.

EVERYONE IS INVITED TO JOIN THE LAUNCH

Since Dr. Tedros' Call to Action in May 2018, the world has responded: in August 2020, the World Health Assembly passed a resolution calling for elimination of cervical cancer and adopting a strategy to make it happen.

On November 17, following the close of the 73rd World Health Assembly, WHO will mark this historic announcement and officially launch the elimination strategy.

Women who have survived cervical cancer from all regions of the world - women who have fought the disease - will open the event. All around the world, companion events and launch activities will mark a day of action.

The moment has arrived for an ambitious, concerted and inclusive strategy to accelerate eliminating cervical cancer as a public health problem.

17th November 2020
1430-1600 CET

EVERYONE IS INVITED TO JOIN THE LAUNCH
FIND OUT MORE

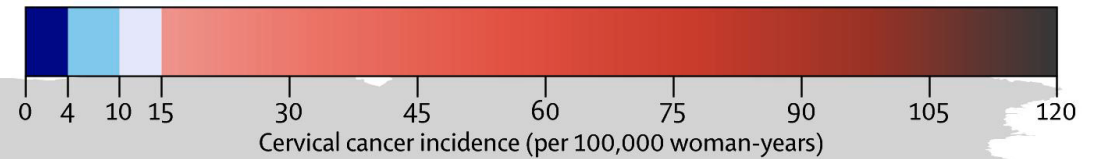
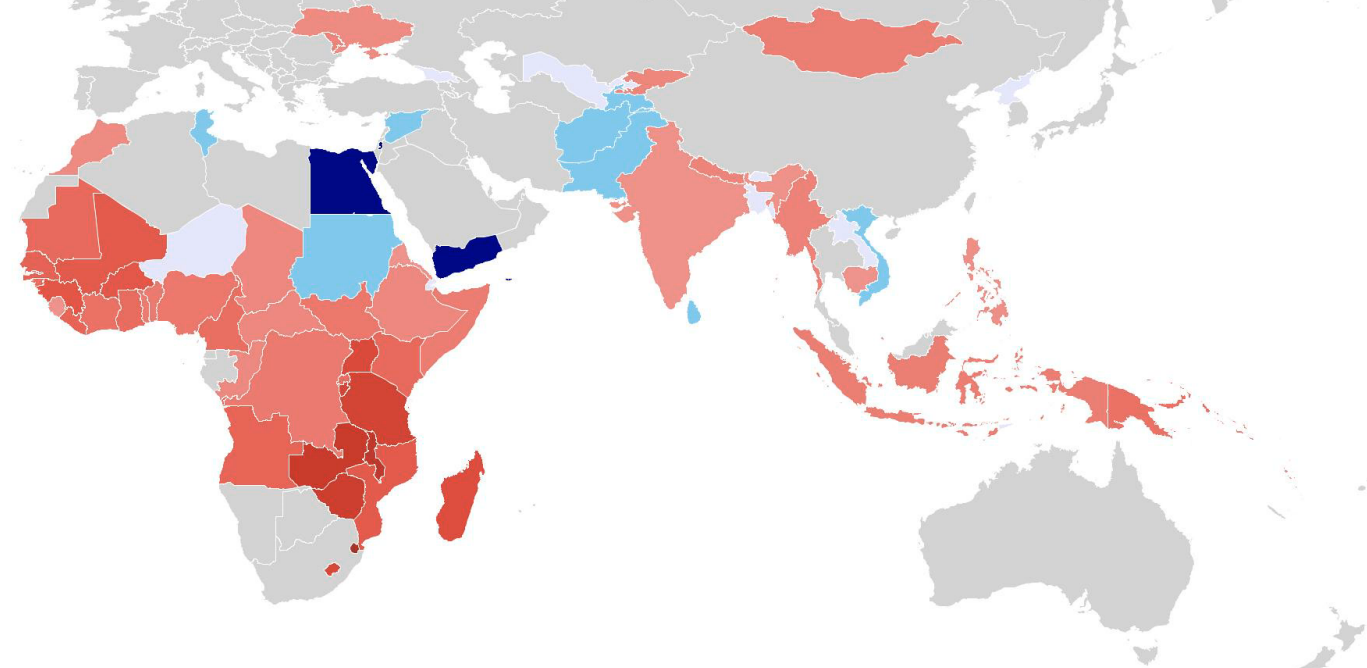
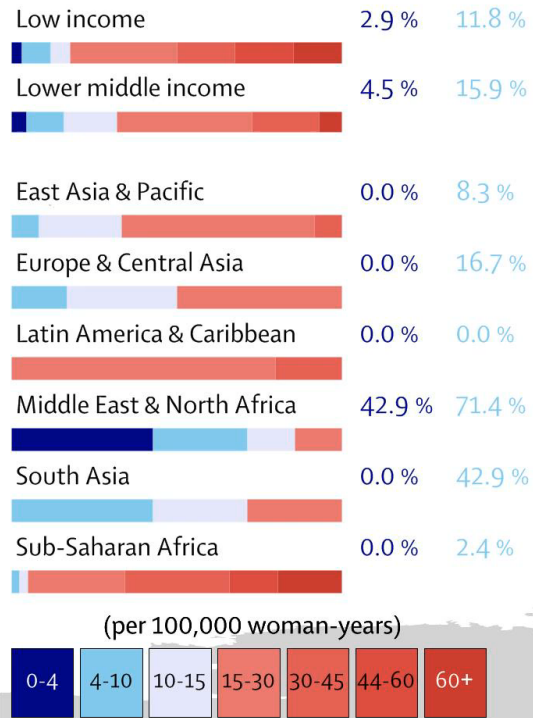
CERVICAL CANCER FREE FUTURE

 World Health Organization

2020

Vaccination & 2 lifetime screens

Cervical cancer incidence distribution



Brisson M/Kim JJ/Canfell K et al., Lancet Jan 30 2020



Elimination: Broader implications for cancer control in LMIC

Addressing cancer
control within

universal health coverage



COVID-19 and Cancer Global Modelling Consortium

ccgmc.org

Thank you

Karen.Canfell@nswcc.org.au



International Agency for Research on Cancer
World Health Organization



HARVARD
T.H. CHAN
SCHOOL OF PUBLIC HEALTH



WHO Cervical Cancer Elimination Modelling Consortium (CCEMC)

Impact and cost-effectiveness modelling for 78 LMIC



NATIONAL CANCER INSTITUTE
Cancer Intervention and Surveillance Modeling Network



**CISNET is a consortium of
NCI-sponsored investigators
who use simulation modeling
to improve our understanding
of cancer control
interventions and guide
public health research and
priorities.**



Centre of
Research
Excellence in
**Cervical Cancer
Control**

This is a multi-institutional agreement in partnership with:



VCS



Kirby Institute

