



HPV Prevention
and Control Board



Lessons learnt from VALHUDES studies Belgian VALHUDES

Ardashel Latsuzbaia MD, PhD

Marc Arbyn MD, PhD

Unit of Cancer Epidemiology,
Sciensano, Brussels, Belgium

2nd June, 2023

COI statement

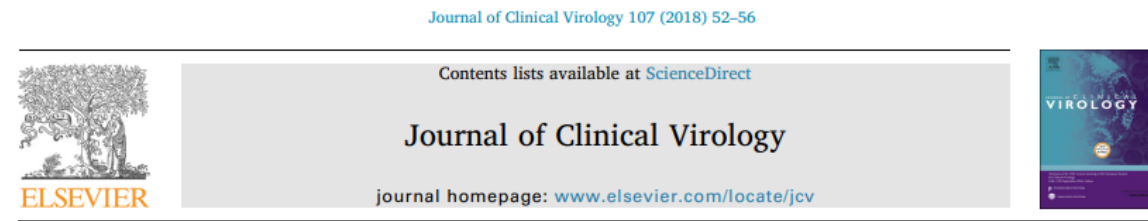
M Arbyn, and A. Latsuzbaia are supported by the Horizon 2020 Framework Programme for Research and Innovation of the European Commission, through the RISCC Network (Grant No. 847845). Scienanso, the employer MA and AL received received funding from VALHUDES project (Arbyn et al, J Clin Virol 2018).

VALHUDES -

VALidation of HUman papillomavirus assays and collection DEvices for HPV testing on vaginal Self-samples and urine samples

Objective

Accuracy of HPV testing on vaginal and urine self-samples to detect precancer compared to clinician taken cervical samples.



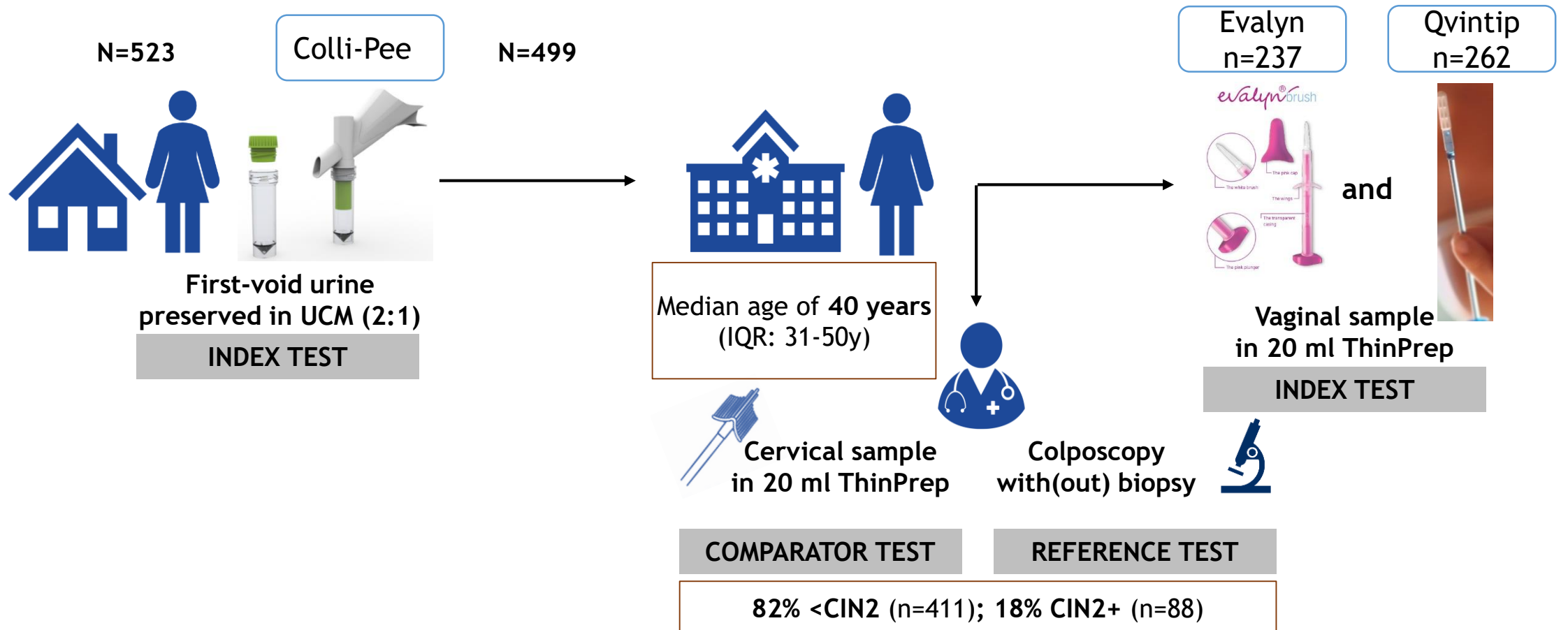
VALHUDES: A protocol for validation of human papillomavirus assays and collection devices for HPV testing on self-samples and urine samples

M. Arbyn^{a,*}, E. Peeters^a, I. Benoy^{b,c,d}, D. Vanden Broeck^{b,c,d,e}, J. Bogers^{b,c,d,e}, P. De Sutter^f, G. Donders^{g,h,i}, W. Tjalma^{i,k}, S. Weyers^l, K. Cuschieri^m, M. Poljakⁿ, J. Bonde^o, C. Cocuzza^p, F.H. Zhao^q, S. Van Keer^r, A. Vorsters^r



VALHUDES -

VALidation of HUman papillomavirus assays and collection DEvices for HPV testing on vaginal Self-samples and urine samples



Evaluated assays

Partial genotyping

- **Abbott RealTime High Risk HPV (U+V)** (16, 18 and 12 others)
- **Roche Cobas 4800 (U)** (16, 18 and 12 others)
- **Roche Cobas 6800 (U)** (16, 18 and 12 others)

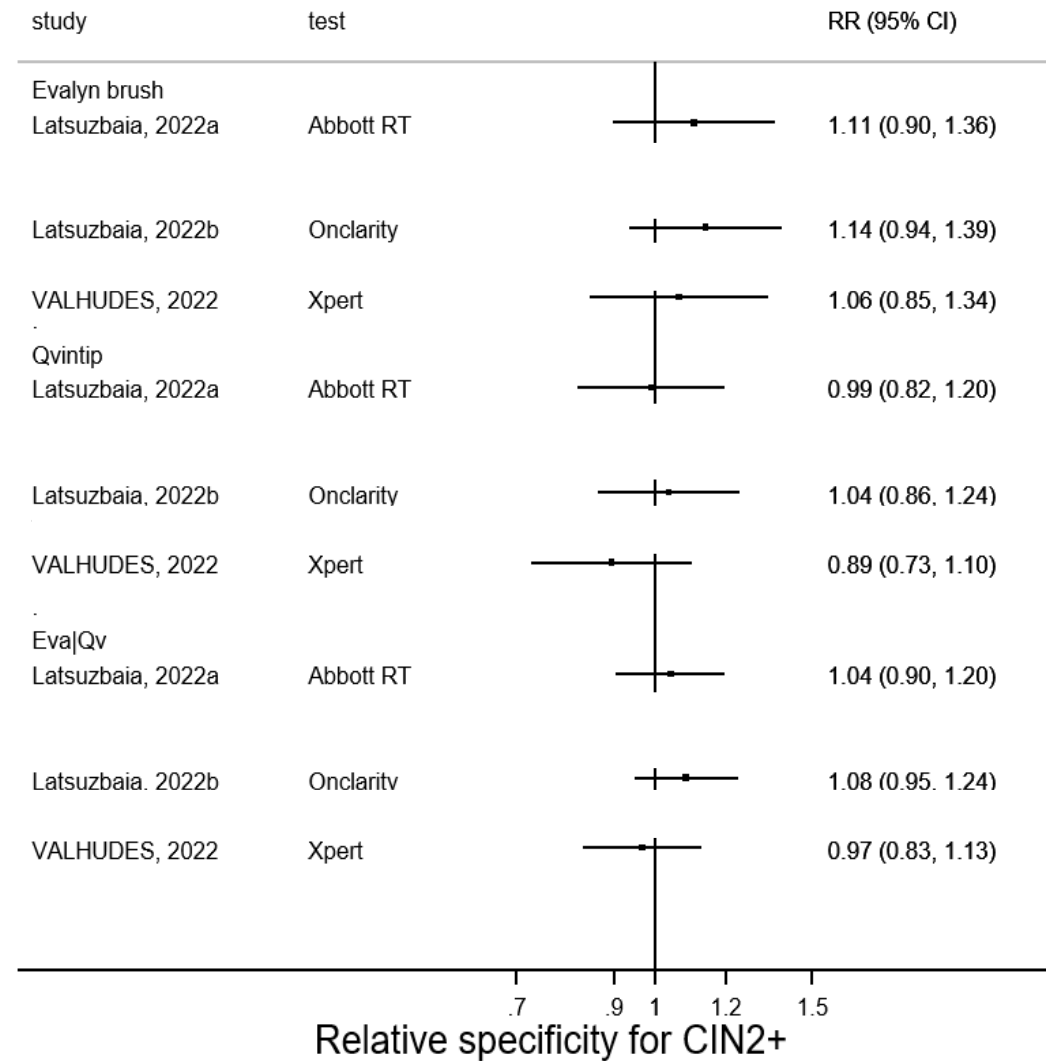
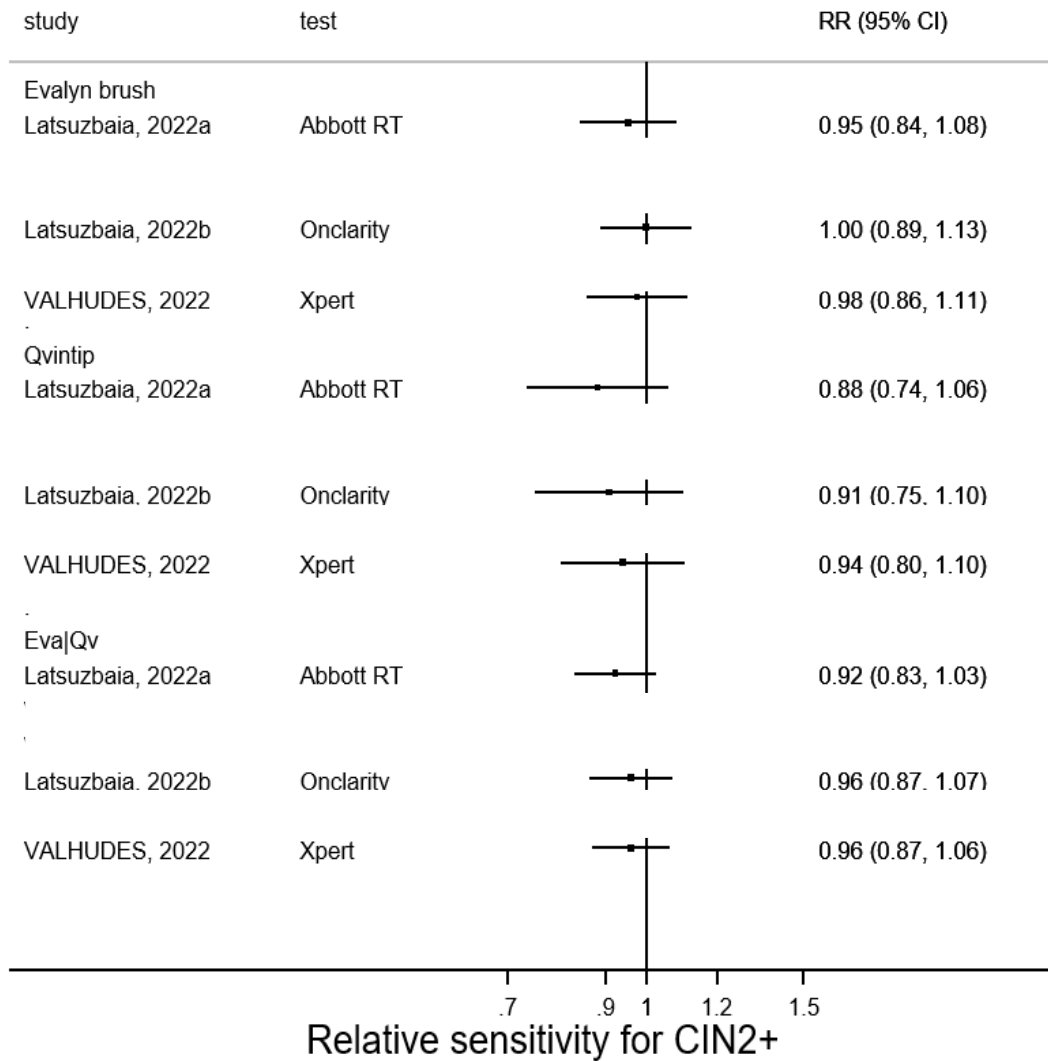
Extended genotyping

- **Abbott Alinity m HR HPV (U+V)** (16, 18, 45, 31/33/52/58, 35/39/51/56/59/66/68)
- **BD Onclarity HPV assay (U+V)** (16, 18, 31, 45, 51, 52 33/58, 35/39/68, 56/59/66)
- **Cepheid's Xpert HPV (V)** (16, 18/45, 31/33/35/52/58, 51/59, 39/56/66/68)

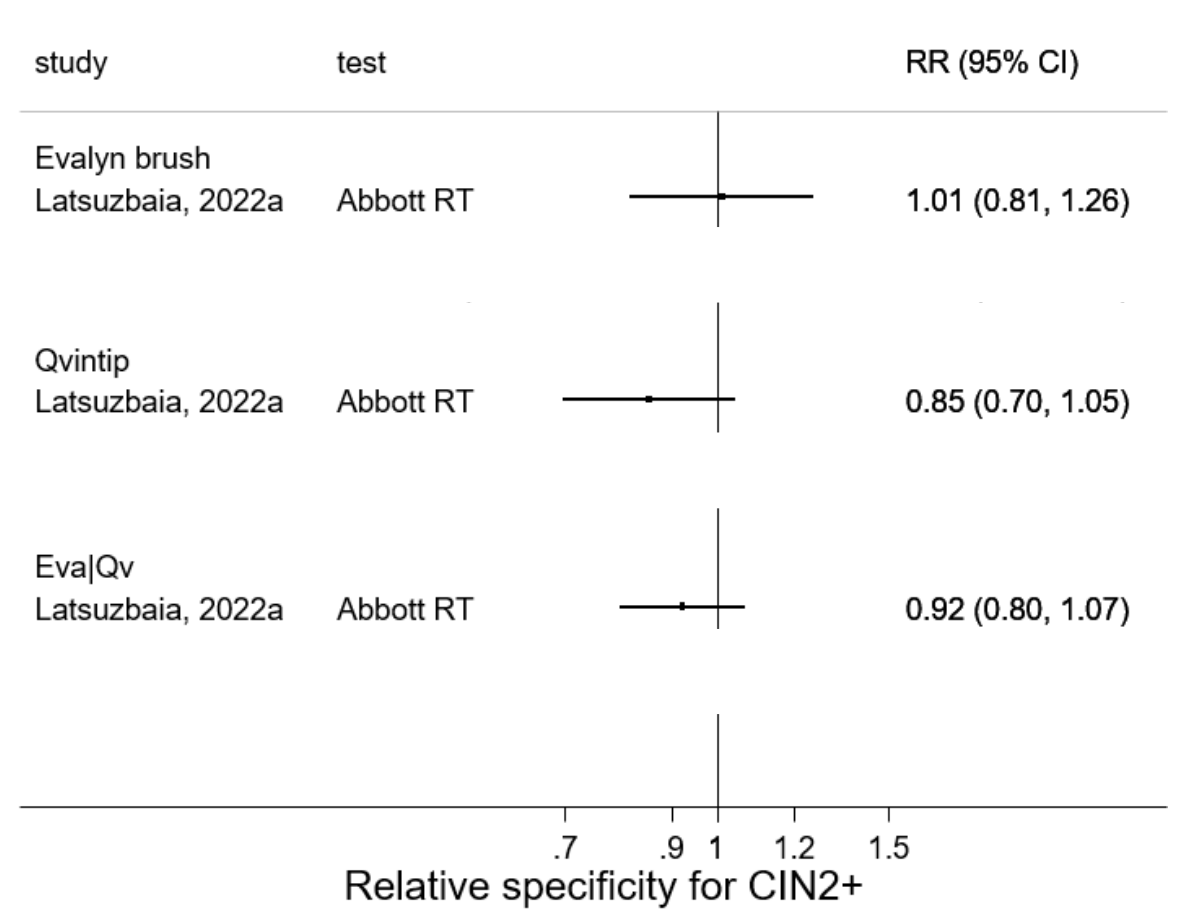
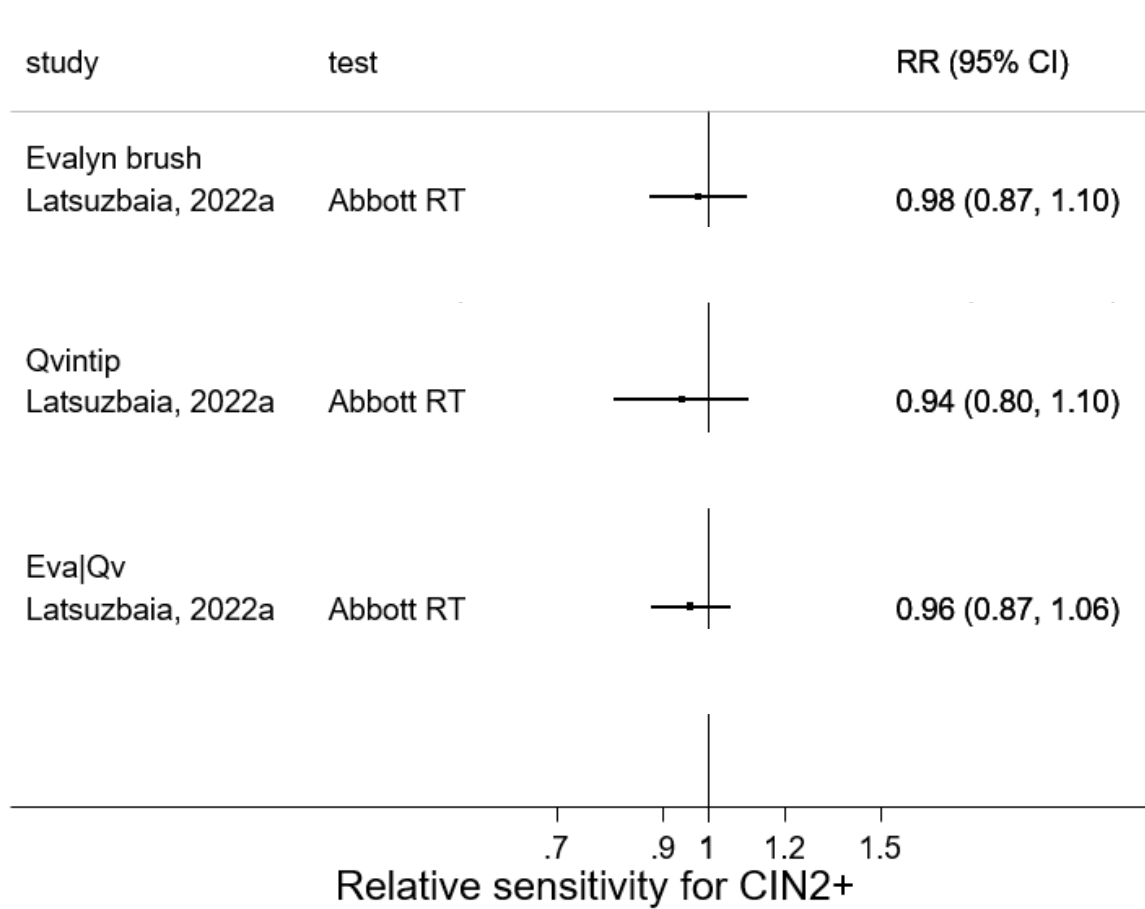
Full genotyping

- **Riatol qPCR HPV assay (U+V)** (14 high risk + 3 low risk)
- **Euroimmun EUROArray HPV (V)** (14 high risk + 16 low risk)

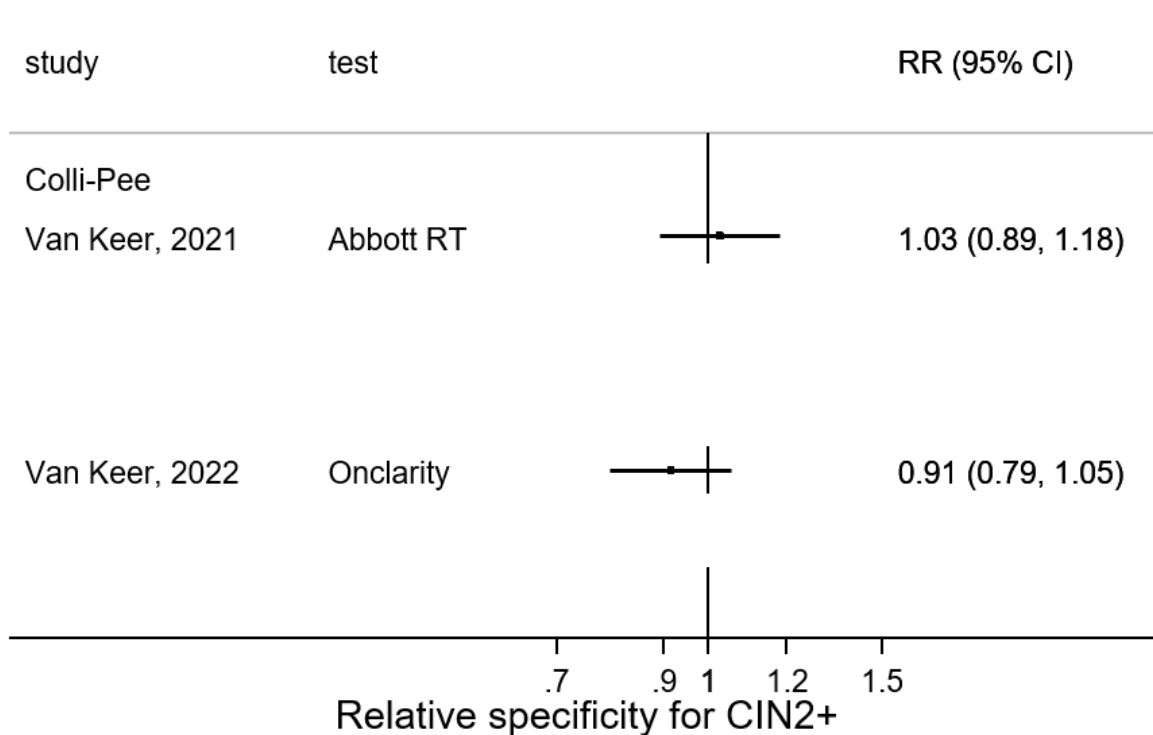
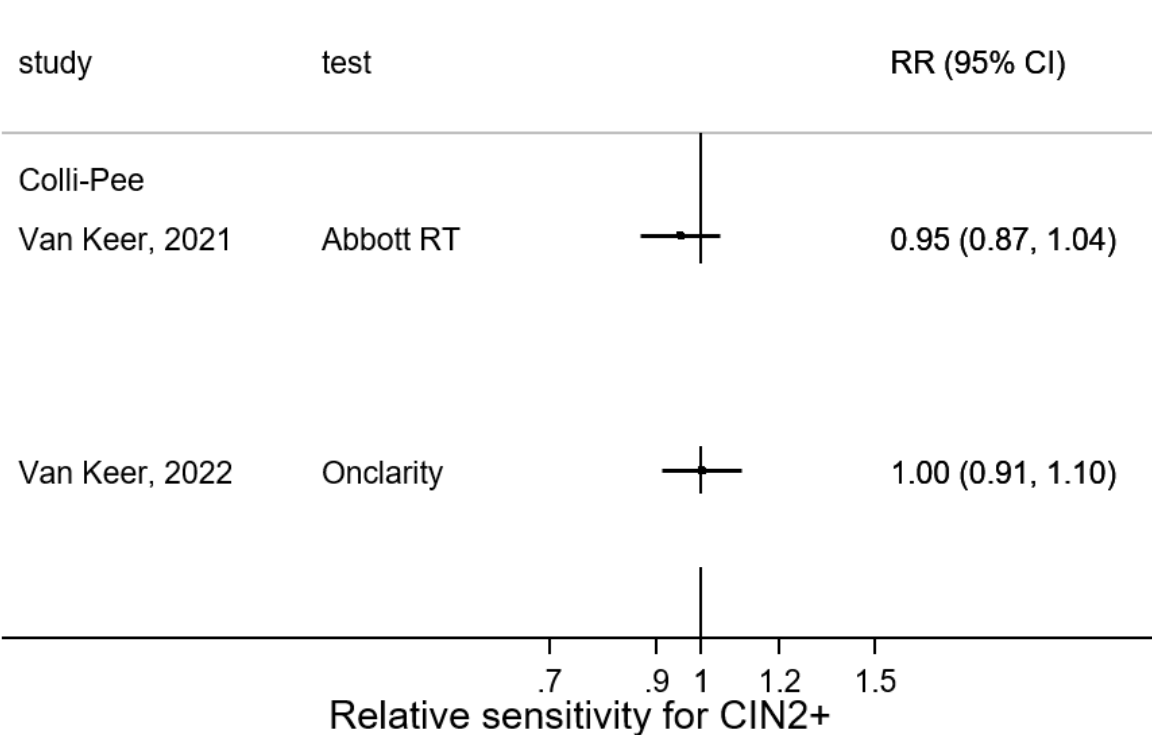
Relative accuracy for CIN2+ vaginal vs cervical



Cut-off optimization on vaginal samples for CIN2+



Relative accuracy for CIN2+ urine vs cervical



Summary

- Clinical accuracy seems to vary by device and tended to be lower in vaginal specimens taken with Qvintip compared to Evalyn Brush.
- Clinical accuracy for CIN2+ of evaluated HPV DNA assays on vaginal and urine samples was similar or could be similar after cutoff optimization compared cervical samples.
- More research is necessary for further optimisation of HPV tests, devices and media on self-samples.

Acknowledgements

Dr. Severien Van Keer
Prof. Alex Vorsters
Annemie De Smet
Prof. Davy Vanden Broeck
Lies De Baere
Dolores Maes
Prof. Philippe De Sutter
Prof. Gilbert Donders
Prof. Jean Doyen
Prof. Wiebren A. A. Tjalma
Prof. Steven Weyers



Funding

Horizon 2020 programme of DG Research and Innovation of the European Commission the RISCC Network (Grant No. 847845), A grant by Abbott GmbH', Novosanis and University Antwerp

Thank you for your attention

