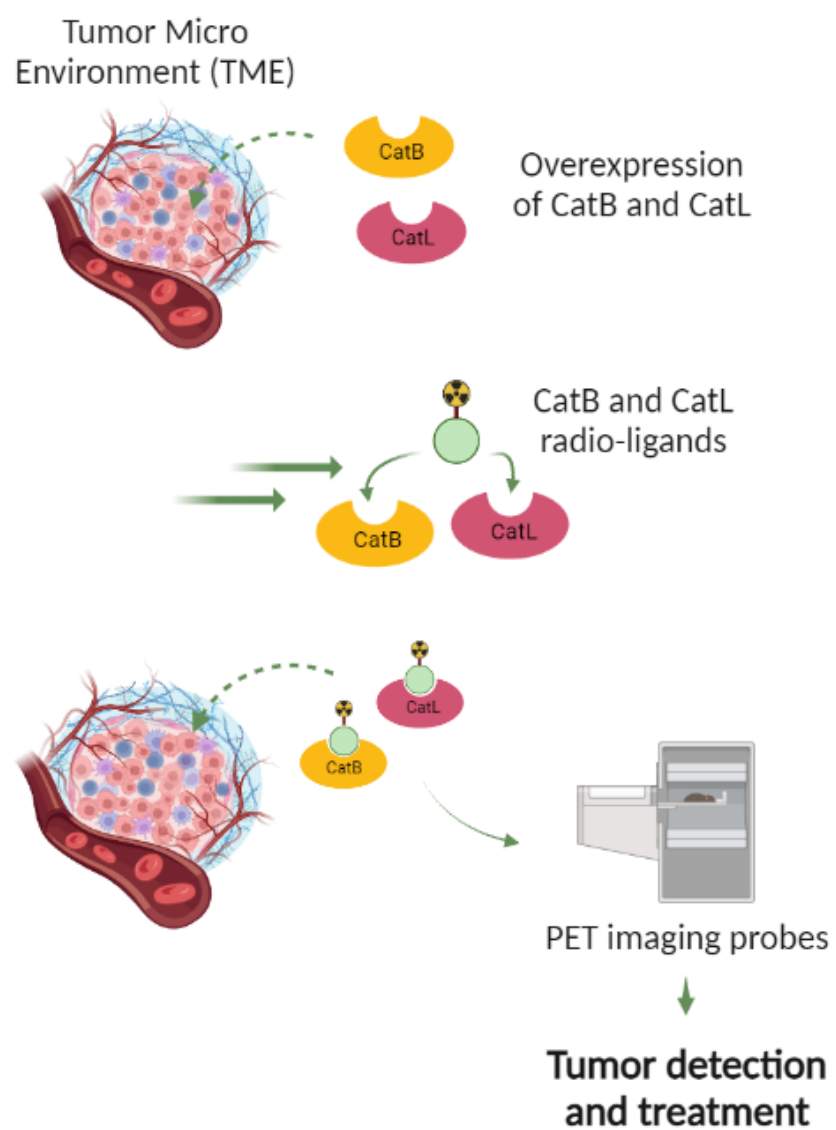


OLIVIERO CINI

Novel probes for imaging of tumor-associated cathepsins via Positron Emission Tomography (PET) and fluorescence microscopy



Synthesis of a library of CatB and CatL inhibitors



Biochemical assays



Synthesis of radio-labelled cathepsin ligands



In vivo studies



**New, potent and selective
CatB and CatL probes**