



Research ethics: self-assessment, ethics committees and case studies

Sarah Claes

Research Affairs Office (RIVA)

Research ethics?



Research ethics?

Moral principles, norms for conducting research

→ Legislation + guidelines



Are you using human embryos and/or human embryonic stem cells in your study?

Yes

No

Does your research involve human subjects?

Does your research use human cells and/or tissues in your research?

Does your research involve the processing of personal data?

Does your research involve animal testing?

Yes

No

Does your research use genetic resources and/or associated traditional knowledge covered by Access and Benefit Sharing legislation and/or the Nagoya Protocol?

Yes

No

Does your research involve international collaboration with non-EU countries?

Yes

No

Could your research potentially harm the environment and/or the health and safety of people involved?

Yes

No

Could your research have dual-use or military applications?

Yes

No

Could your research be misused, compromise security and/or human rights?

Yes

No

Does your research involve artificial intelligence?

Yes

No

Are there any other ethical considerations that need to be taken into account?

Yes

No



EU Grants

How to complete your ethics self-assessment

1. Does the research involve or make use of personal data in any information relating to an identified or identifiable natural person, a telephone number, a bank account number, a fingerprint, an identification number or one or more specific elements that identify the person, physiological, psychological, economic, cultural or social identity?

Yes/No

If the answer is YES, you are required to fill in the section 'Processing of personal data' in the Peoplesoft/Antigoon selfservice 'Research Projects'.

2. Will medical experiments be conducted on humans and/or human samples in the research, as defined in the Regulation of 7 May 2004?

Yes/No

If the answer is YES:
a. you are required to fill in the section 'Processing of personal data' in the Peoplesoft/Antigoon selfservice 'Research Projects';
b. your research proposal requires an opinion by the UAntwerp Committee for Medical Research in submitting an application with CME

Does your research involve the processing of personal data (e.g. in surveys, interviews, observational studies, etc.) or personal data (e.g. biometric data or philosophical conviction)? Does it involve the processing of personal data of vulnerable people?

a. you are required to fill in the section 'Processing of personal data' in the Peoplesoft/Antigoon selfservice 'Research Projects';
b. your research proposal requires ethical clearance by the UAntwerp Ethics Committee for Social Sciences and Humanities (EASHW). More information and guidelines on submitting an application with the EASHW on Pintra.

Ethiek & Dataverwerking

Ethiek & integriteit

Beantwoord deze vragen over de ethiek en integriteit

The checklist ethics & integrity poses seven "yes/no" questions to set up actions by the project's promotor (i.e. being obliged to perform medical experiments on humans). The checklist is mandatory. If the checklist will lead to projects being 'incomplete' and there is no promotor or a delegate can complete the checklist. The fill in the checklist.

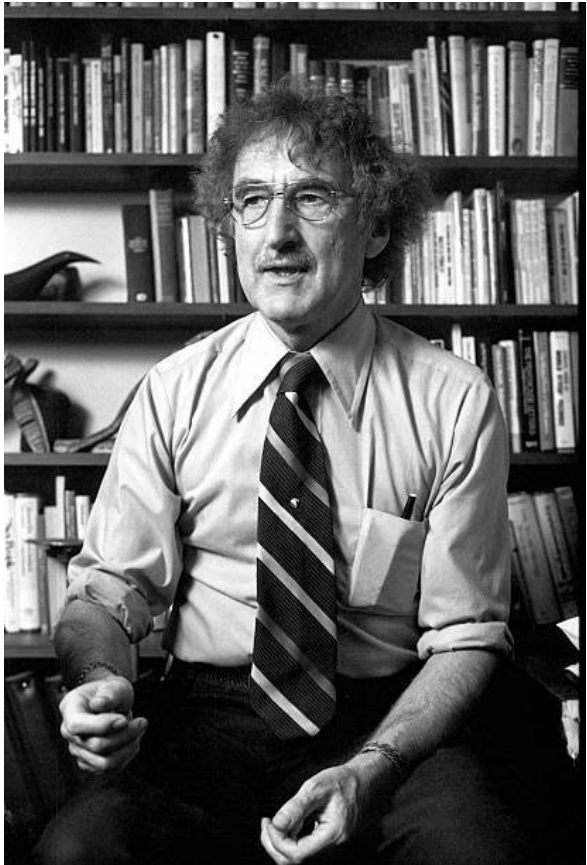
If you have any questions regarding the checklist or the research data management, please contact support@uantwerpen.be (Research Data Management) or contact your research data manager.



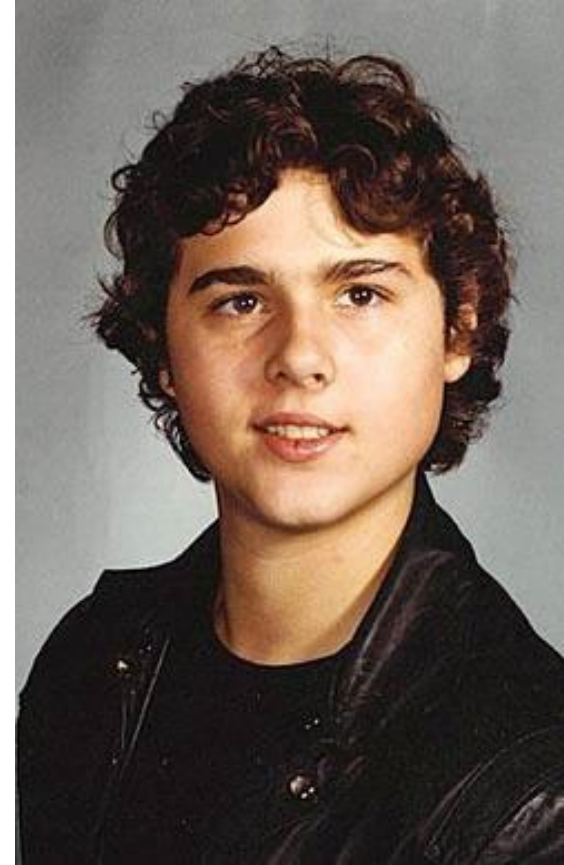
Ethical Code of Conduct and Principles for Scientific Research University of Antwerp

Types of research

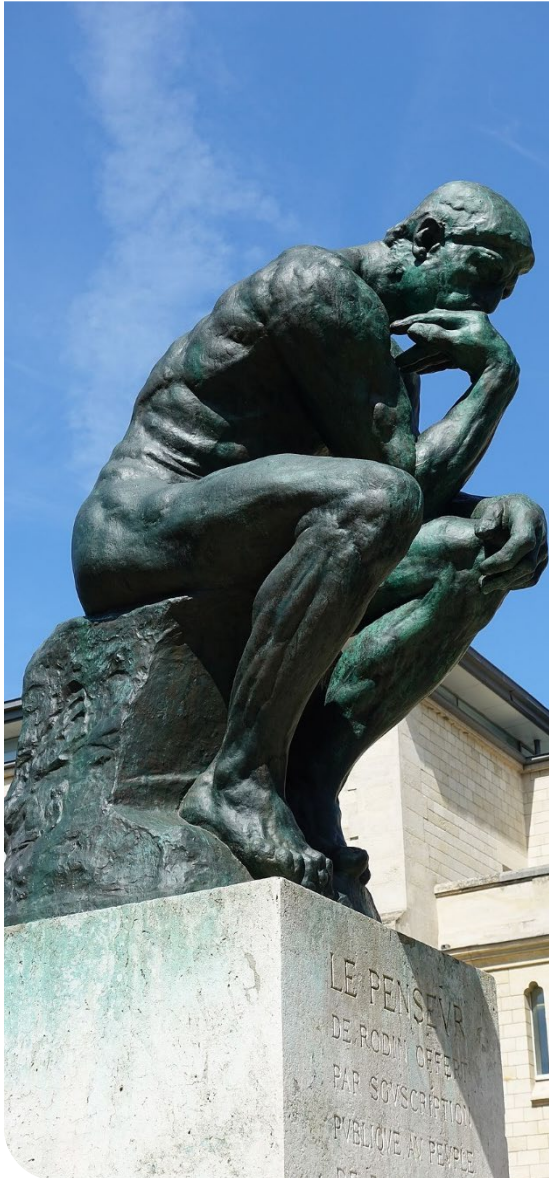
- Medical experiments: clinical trials, clinical studies
- Animal experiments
- Research in social sciences (surveys, interviews, focusgroups,...)
- Defence-related research projects
- Research with a risk of misuse
- Research in collaboration with 'sensitive' partners
 - Respect for fundamental rights?
 - Research security risks?



John Money

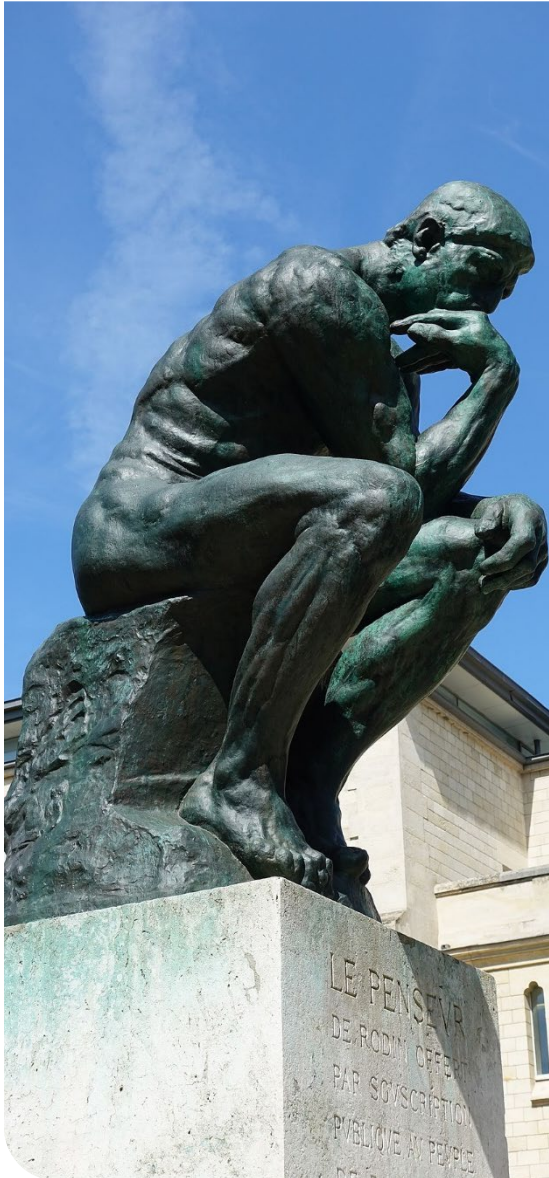


David Reimer



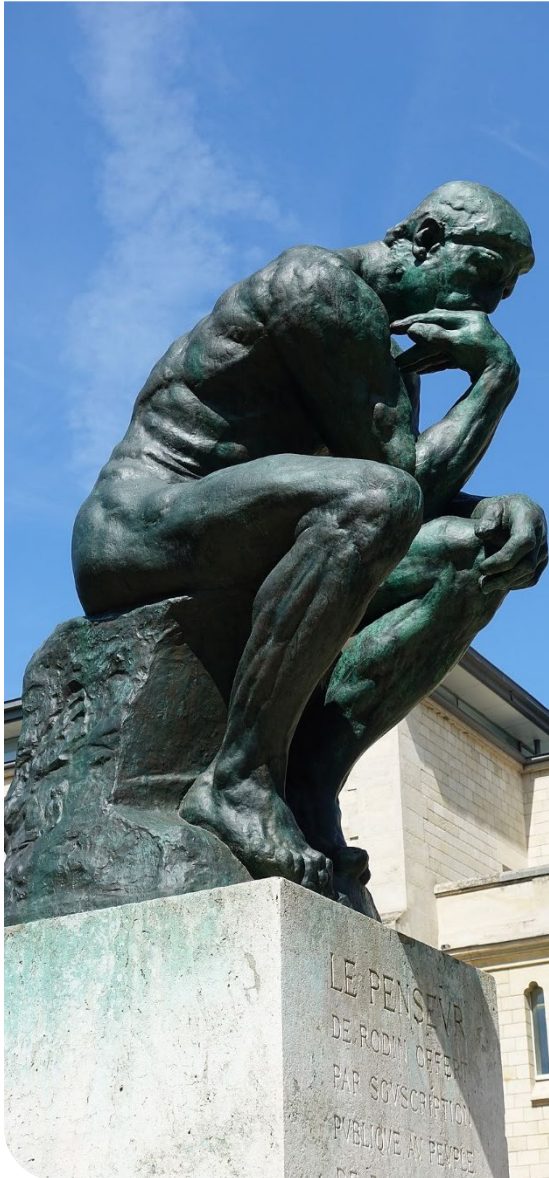
Bias

- researchquestion /-proposal /-methodology
- participants
- *Confirmation* bias
- Positive-results bias



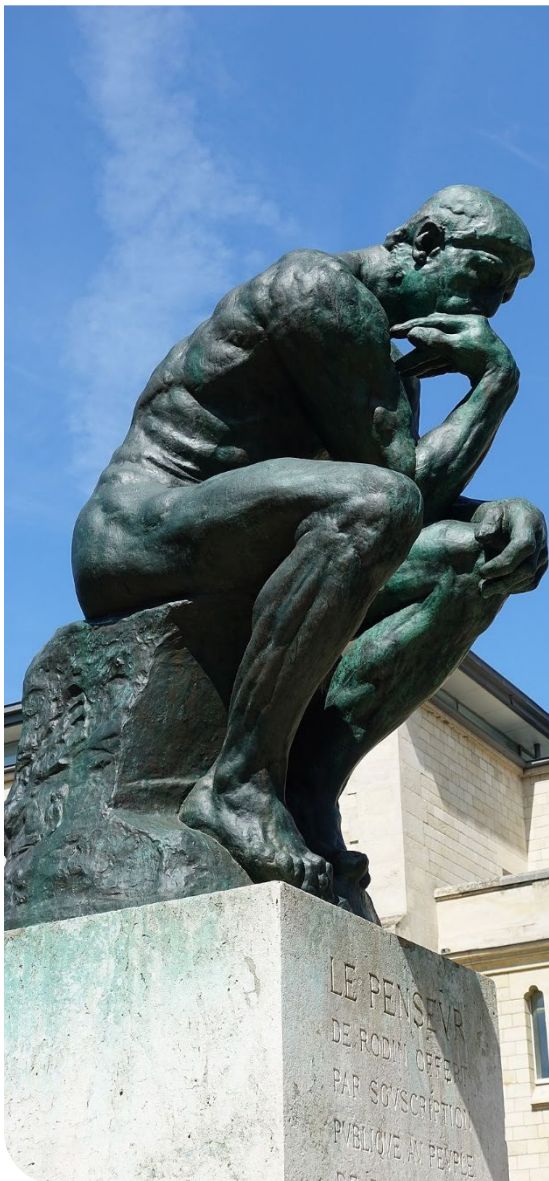
Voluntary participant

- Participants have the right to be informed
- Participants have the right to (withdraw) consent



Vulnerable groups

- What are vulnerable groups?
= context-related
- Special attention for minors
- Special attention for animals

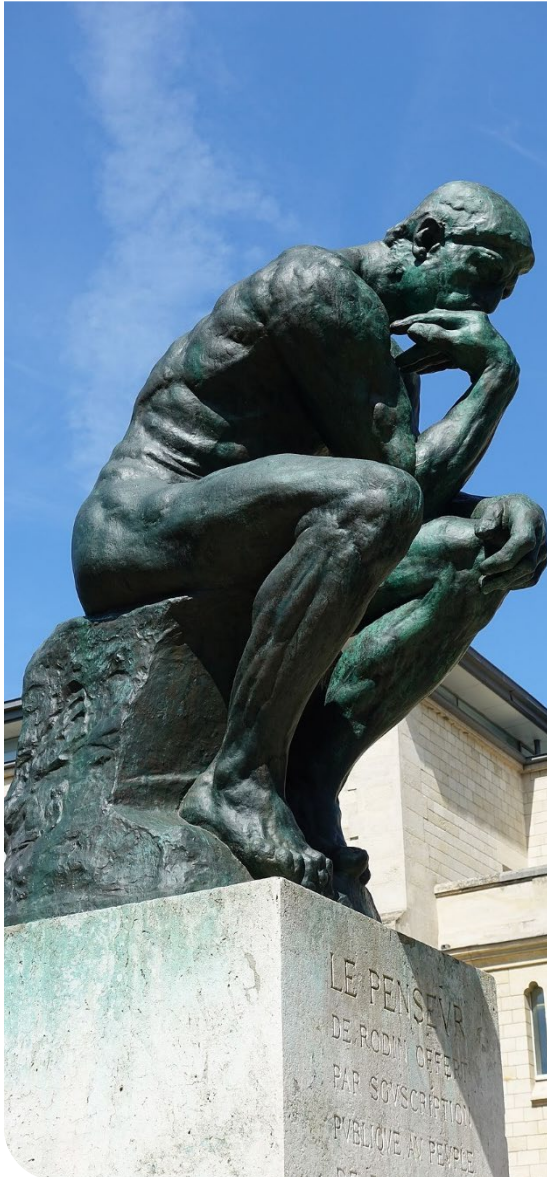


Gevoelige topics: *Follow-up* en *incidental findings*

- Gevoelige thema's: opvang voorzien voor deelnemers
 - Gevoelig = contextgebonden
- Meldingsplicht?

Your Belgian doctoral student wants to conduct research on the use of minority languages in the public sphere in China. The young researcher will collect photo and video material on site and conduct interviews with individuals within minority groups. The interviews will survey the experiences and opinions of individuals belonging to the minority group. As a supervisor, you are concerned about the safety of the researcher themselves and about the safety of possible interviewees. In addition, the question arises whether collected data (including photo and video material) can be transported without problems outside the borders of the home country.

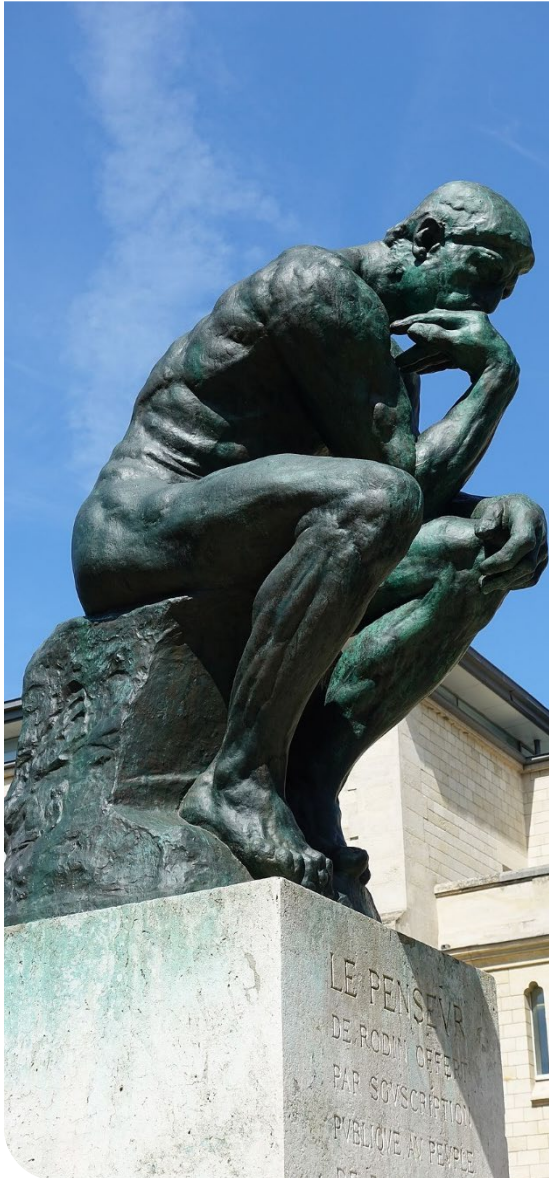
You have been asked to conduct research on diversity commissioned by a foreign government agency, but it is known that the government has repressive policies regarding the subject.



Respect for human rights

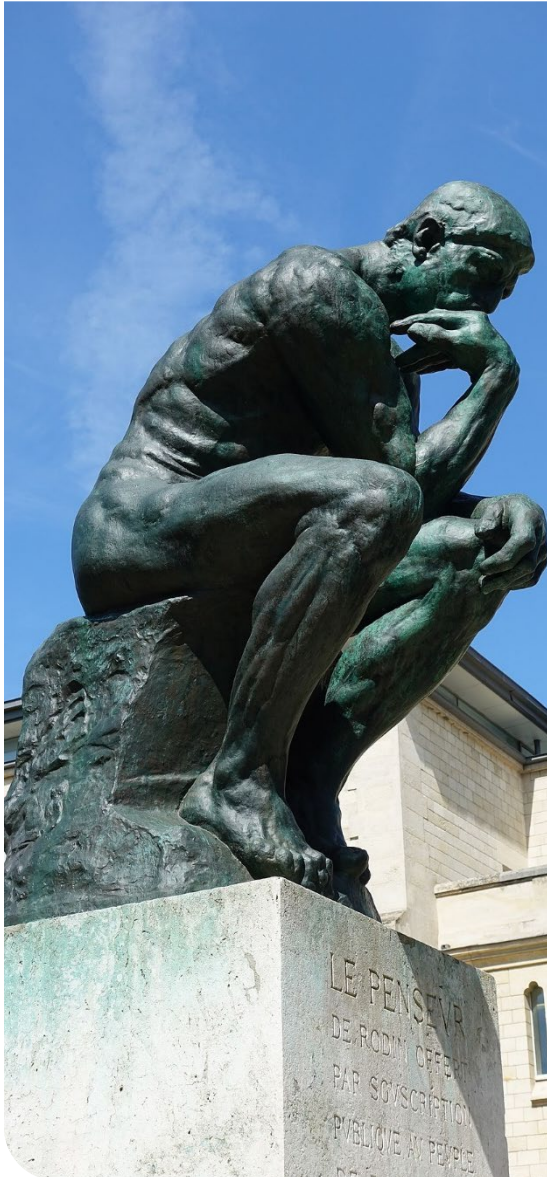
- Could your research potentially contribute to human rights violations?
- Could a partner involved be directly or indirectly associated with human rights violations? For example: technological applications, Artificial Intelligence, pathogens or toxins, ...

→ [VLIR Human Rights Assessment](#)



Potential for *misuse*

- Can your research results potentially be misused for unethical purposes if they end up in the wrong hands?
E.g.: interrogation techniques, surveillance techniques, facial recognition techniques, genetic manipulation (bacteria), virulence of pathogens, ...

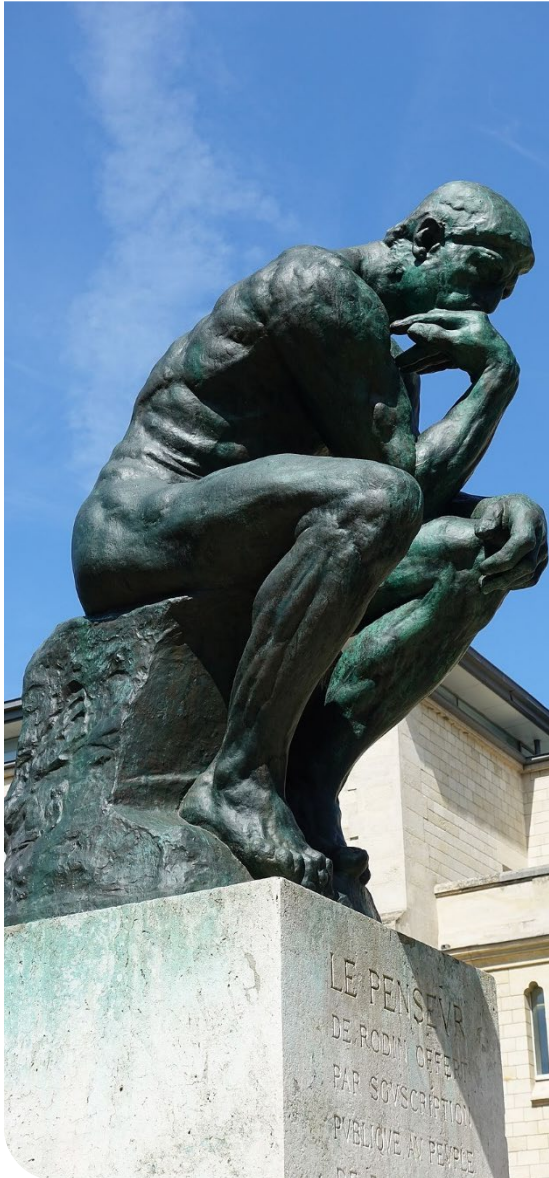


Potential for *interference*

- Is there a potential risk of a (sensitive) partner interfering with your research?

Such interference poses a threat to academic freedom, can give rise to self-censorship, and undermines the integrity of researchers.

→ Poses a threat to academic freedom



Ethics dumping

- Conducting research in other countries to circumvent (strict) regulations
- Requesting ethical approval from a partner institution with less strict guidelines or simpler procedures

The basics

- The wellbeing of human and animal participants
- The wellbeing of the researchers
- Public/societal interests
- Respect for cultural heritage, human rights and environment
- Safety of individuals and groups with special attention for vulnerable groups and minors
- The reputation of the research group, the faculty, the university and the practice of science as a whole

Ethics Code of Conduct

Ethics Committees

Committee for Medical
Ethics UZA-UAntwerp

Ethics Committee for
Animal Testing

Ethics Committee for the
Social Sciences and
Humanities

Ethics Committee for
Misuse, Human Rights &
Security (MiHRS)

ethisch.comite@uza.be

ecd@uantwerpen.be

eashw@uantwerpen.be

mihrs@uantwerpen.be

