



Associations, courses and initiatives for PhD researchers

ADS Doctoral Day

19 March 2026

Antwerp Summer & Winter University (ASWU)



- Short-term (1-2 weeks) academic programmes in a dynamic & international setting
- **PARTICIPATE**
 - Opportunity to deepen your knowledge, gain hands-on experience & network with international experts
- **ORGANISE**
 - Work within ASWU framework & support
 - Transferable skills: communication, administration, logistics, education, academic supervision



uantwerpen.be/aswu

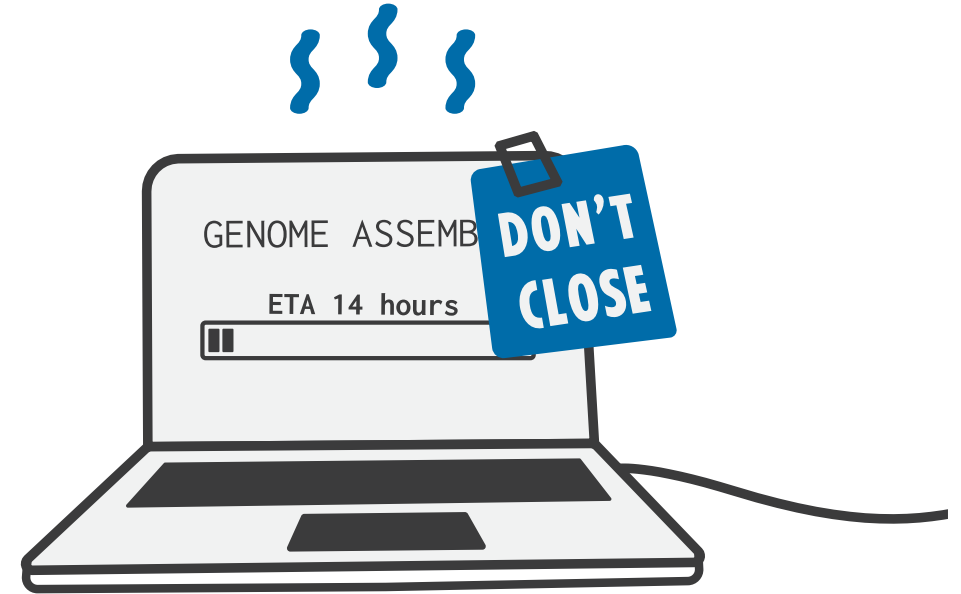


summeruniversity@uantwerpen.be

CalcUA

High Performance Computing

- your **computations** seem to **take forever** on your laptop
- you run so many analyses, they might not finish by the end of your PhD
- you like to get some **training** on Linux, HPC, supercomputers
- you need guidance to apply to the Flemish supercomputer



uantwerpen.be/calcula

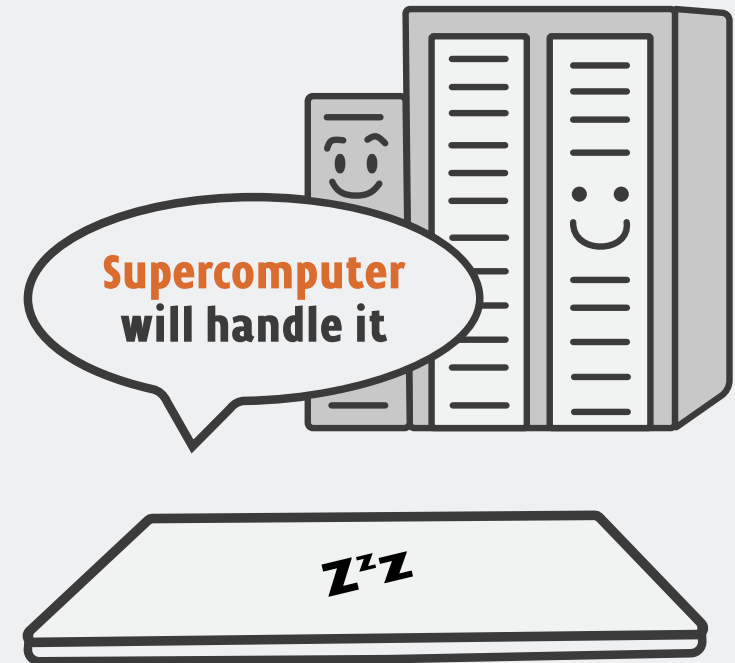


hpc@uantwerpen.be

VSC

Flemish Supercomputer Center

- you are so ambitious that CalcUA's infrastructure is no longer sufficient
- your computational tasks make intensive use of **large data sets**
- you like to get **more training** on Python, workflows, ...
- you need guidance to apply to the European supercomputers



vscentrum.be



hpc@uantwerpen.be

RIVA's Dive-into training & support offer

- Dive-into-Projects: generic project proposal writing, specific grant writing
- Dive-into-Business: valorisation, intellectual property
- Hands-on workshops, expert guidance & tailored support
- Self-development: can count as part of your doctoral study programme



[Dive-into-Projects](#)



research@uantwerpen.be - Grants Office & Research Affairs Office



[Dive-into-Business](#)



valorisatie@uantwerpen.be - Valorisation Office



- **3 Academic English** courses – through the [ADS training offer](#)
Giving academic presentations / Writing academic papers / Communicating effectively in an academic context *[free for PhD researchers]*
- **Individual** Academic English coaching *[PhD researchers can pay with educational credit]*
- **15 language courses:** incl. Dutch, English, French, Arabic, Korean & Swahili *[PhD researchers can pay with educational credit]*
- **Proofreading/translations** of academic papers, articles, questionnaires, reports, etc.
- **Interuniversity Test of Academic English (ITACE)**



linguapolis.be / itace.be



zoe.teuwen@uantwerpen.be

MONDO

- Social network for international staff, researchers, students & family
- Joint initiative of Antwerp Doctoral School, International Staff Office & International Students Office
- Monthly activities *[free of charge]* / newsletter every two months
- MONDO WhatsApp community: Announcements, Chat & events, Marketplace (buy & sell)



uantwerpen.be/mondo



mondo@uantwerpen.be



STATISTICAL COURSES

STATISTICAL CONSULTANCY

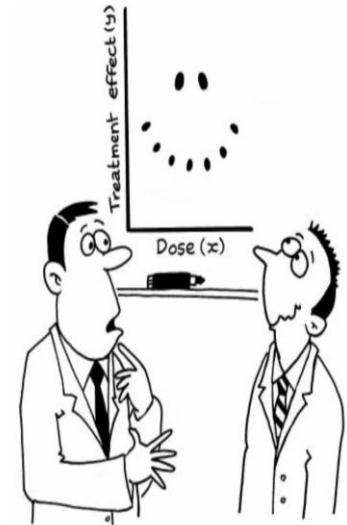
- StatUa offers flexible **statistical advice** during any stage of your study
- **First five hours** of advice for PhD researchers are **free of charge** [covered by ADS]
- After that, StatUa charges €100 per hour



uantwerpen.be/statua



statua@uantwerpen.be



"It's a non-linear pattern with outliers.....but for some reason I'm very happy with the data."



TEXTUA

- Core facility for text mining services: using AI to automatically process any text
- Apply state-of-the-art Large Language Models such as ChatGPT for intelligent information extraction & advanced analysis of text from any scientific discipline
- Offer consultation, software development, trainings, data collection & annotation
- Participate in larger research projects



uantwerpen.be/textua



pieter.fivez@uantwerpen.be

VAIA – Flanders AI Academy

VAIA - a collaboration between all Flemish universities and universities of applied sciences & arts

- **Lifelong learning** about **artificial intelligence**
- For professionals and **researchers** (all levels and disciplines)
- Collect and promote **hundreds of courses**, events, learning materials, ...
- Organise **new trainings**



vaia.be



info@vaia.be



VAIA



Flemish Institute for Biotechnology

- Advancing **life sciences** in Flanders through pioneering research, technology transfer & societal engagement
- 10 research centers across all Flemish universities
- Enabling technologies: **10 core facilities**
- **Training:** bioinformatics, coaching, skills, science
- Technology transfer (valorisation): patents, start-ups, ...



vib.be

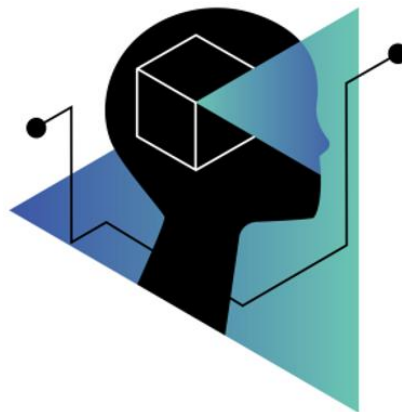


info@vib.be

PhD Talent Coordination Team

- Collaboration between all Flemish universities
- Connect PhD talent with non-academic labour market through activities & initiatives
- **PhD Talent Advisory Board**
- **LinkedIn community**

[PhD Talent Pool Flanders](#)



PhD Talent Pool Flanders

- [Recruitment platform](#) for PhD holders & employers in search of PhD talent



vlir.be/phd-talent



phdtalent@vlir.be



YUFE: Young Universities for the Future of Europe

- Vision: a student-centered, open and inclusive European university model
- Doctoral Learning @ YUFE
 - 2024-2025 | Pilot phase
 - YUFE-wide & local offer of courses, initiatives
 - Examples: mentoring programme, transferable skills training
 - From 2027 | A new YUFE doctoral programme
 - Keep an eye out!



yufe.eu/yufe-approach-to-doctoral-and-postdoctoral-learning



Ynte.Vanderhoydonc@uantwerpen.be



