



# Associations, courses & initiatives for PhD researchers

1 minute pitches & opportunity to ask questions during the lunch break

March 2025

# VAIA – Flanders AI Academy

## What VAIA does:

- Lifelong learning about artificial intelligence
- For professionals and researchers, from beginner to expert
- We collect and promote **hundreds of training courses**
- We organise new trainings



## Who VAIA is:

- Collaboration between all Flemish universities and colleges
- We channel AI expertise in Flanders towards professionals

→ [www.vaia.be](http://www.vaia.be)

VAIA



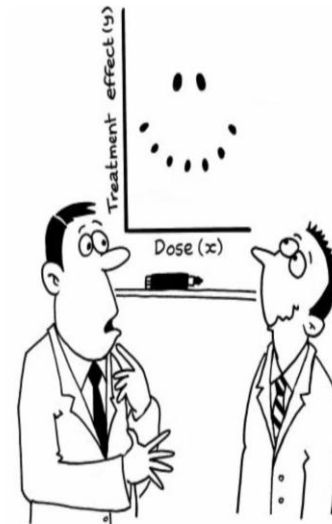
**University of Antwerp**

**TEXTUA** | Antwerp Text Mining Centre  
Core Facility

- **Website:** [www.uantwerpen.be/textua](http://www.uantwerpen.be/textua)
- **Contact:** [pieter.fivez@uantwerpen.be](mailto:pieter.fivez@uantwerpen.be)
- **Text mining** services: applying **Artificial Intelligence** to **text data**
  - Software development
  - Data collection and annotation
  - Research projects
  - Consultancy
  - Education and workshops
- **First hour of consultation = free!**

## COURSES

- [Basic principles of statistics](#)
- [Analysis of grouped/longitudinal data using mixed models](#)
- [Multivariate statistics](#)
- [Internet questionnaires with QUALTRICS](#)
- [Multiple regression and ANOVA](#)
- [Categorical data analysis using logistic regression](#)
- [R workshop](#)
- [Graphics in R](#)
- [Multilevel analysis](#)
- [Power analysis/sample size calculation](#)
- [...](#)



"It's a non-linear pattern with outliers.....but for some reason I'm very happy with the data."

## CONSULTANCY

- StatUa offers flexible **statistical advice** during any stage of your study
- First hour of advice for PhD students is covered by ADS, and therefore **free of charge**
- After the initial hour, we charge 100 EUR/h
- First aid in case of statistical issues: [statua@uantwerpen.be](mailto:statua@uantwerpen.be)





## Language courses

### 14 languages

incl. Dutch, English,  
French, Arabic, Korean &  
Swahili

✓ You can pay with educational  
credit

[www.linguapolis.be](http://www.linguapolis.be)

## Academic English

### ADS courses

- Giving Academic Presentations
- Writing Academic Papers
- Effective Communication in an Academic Context

+ individual coaching

#### Free through ADS

✓ You can pay with educational  
credit

[www.uantwerpen.be/ads](http://www.uantwerpen.be/ads)

## English test

### ITACE

Interuniversity Test of  
Academic English  
- for Students  
- for Lecturers  
- for CLIL-teachers

✗ You can't pay with educational  
credit

[www.itace.be](http://www.itace.be)

## Proofreading and translations

### proofreading/editing

academic papers, articles,  
questionnaires, reports,  
etc.

### translations

into and between Dutch,  
English, French, Spanish,  
Arabic, etc.

✗ You can't pay with educational  
credit

[www.linguapolis.be](http://www.linguapolis.be)

# Antwerp Summer & Winter University (ASWU)



## Why *participate?*

- Academic courses of 1-2 weeks during winter and summer
- Opportunity to deepen your knowledge, gain hands-on experience, and **network with international experts.**

## PhD researchers as *organisers*

- ASWU framework
- Transferable skills
  - Communication, administration, logistics, education and academic supervision

In 2024: **694** participants of **87** nationalities in **27** programmes: 44% students, **27% PhD**, 29% professionals

## Courses in 2025

- [Finance 4 Development](#) (23 - 27 June)
- [Non-Commutative Algebraic Geometry](#) (30 June - 10 July)
- [Inter- and Transdisciplinary Research](#) (18 - 22 August)
- [Qualitative Research Methods in Health Care](#) (25 - 29 August)
- [Anger, Backlash, Violence: Climate Activism Today](#) (28 August - 5 September)
- [Modelling infectious diseases and health economics](#) (1 - 5 September)

Reach out to us:

[www.uantwerpen.be/aswu](http://www.uantwerpen.be/aswu) - [summeruniversity@uantwerpen.be](mailto:summeruniversity@uantwerpen.be)

[LinkedIn](#) @Antwerp Summer & Winter University

# WDW

## Werkgroep Doctorandi Wetenschappen Workgroup PhD students in sciences

Spokesperson for PhD-students with members in several faculties

- Protect PhD-students' rights when official PhD regulations change
- Improve communication between faculties

Who is your spokesperson?

FBD - farmaceutische wetenschappen	n.n.
FBD - biomedische wetenschappen	<a href="#">Mirthe Vandenputte</a>
FBD - diergeneeskundige wetenschappen	<a href="#">Lien Loier</a> <a href="#">Marlotte Loyens</a>
NW - nautische wetenschappen	<a href="#">Hubert Paridaens</a>
OW - architectuur	n.n.
OW - productontwikkeling	n.n.
WET - bio-ingenieurswetenschappen	<a href="#">Madiha Siddiqui</a>
WET - biologie	<a href="#">Lucilla Boito</a>
WET - chemie	<a href="#">Christine Vantomme</a> <a href="#">Rubén Quiroz Marnef</a>
WET - fysica	n.n.
WET - informatica	n.n.
WET - wiskunde	n.n.



**Farmaceutische wetenschappen,  
Architectuur, Productontwikkeling,  
Bio-ingenieurwetenschappen,  
Fysica, Informatica en Wiskunde**

Reach out to us!

[wdw@uantwerpen.be](mailto:wdw@uantwerpen.be)

[Mirthe.Vandenputte@uantwerpen.be](mailto:Mirthe.Vandenputte@uantwerpen.be)

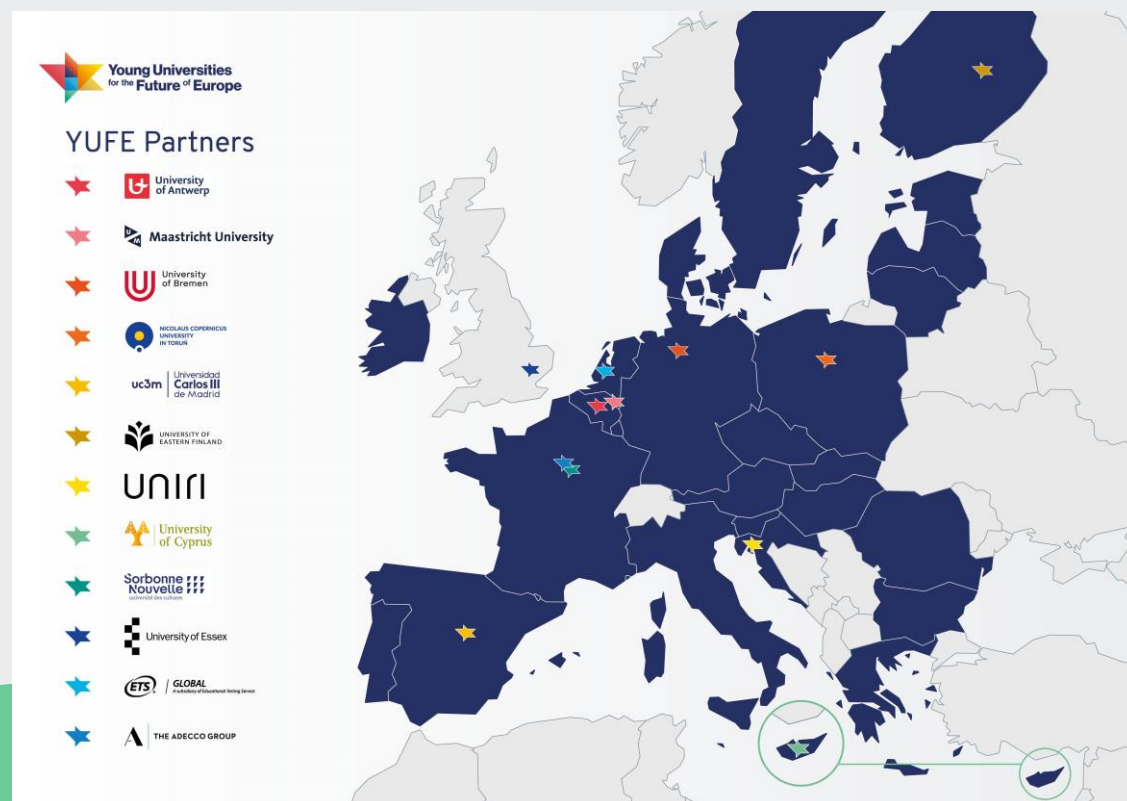


# YUFE Pilot on Doctoral Learning

- Vision: **YUFE DIOSI Model on Doctoral Learning**
- From May 2024 until December 2025
  - **International training offer**, online, formal and informal:
    - ✓ MOOC's: Research Ethics & Integrity (Mind the GAP) and Equity, Diversity & Inclusivity
    - ✓ Online courses on Open Science, Open Innovation & Entrepreneurship, Sustainable Research, International Career Development, ...
    - ✓ Informal 'Apero Doctoring' sessions
  - **Graduate Tracking & Impact Survey**
  - **Local offer:**
    - ✓ Research Plan
    - ✓ Personal Development Plan
    - ✓ Non-academic Mentoring

## More info?

- Short video [YUFE pilot 'Doctoral Learning'](#)
- [YUFE Approach to Doctoral and Postdoctoral Learning – YUFE](#)
- [YUFE pilot on Doctoral Learning | Antwerp Doctoral School | University of Antwerp](#)



# MONDO

A social network for international staff and students and their family members to create cohesion at our university

a joint initiative of:

- the International Staff Office
- the International Students Office
- the Antwerp Doctoral School

To help to get to know better our country



Monthly activities  
Bi-monthly newsletter



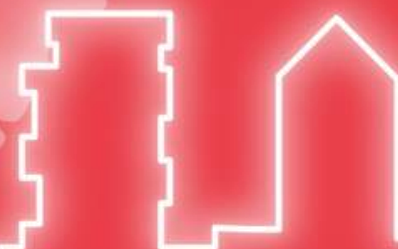
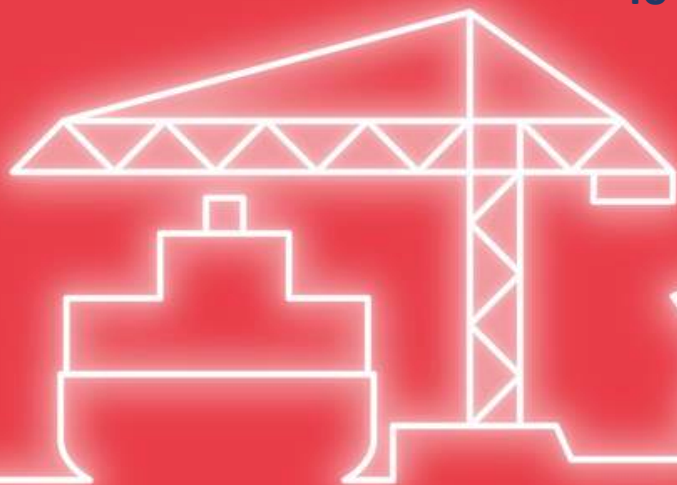
[mondo@uantwerpen.be](mailto:mondo@uantwerpen.be)



[www.uantwerpen.be/mondo](http://www.uantwerpen.be/mondo)



Mondo by UAntwerp

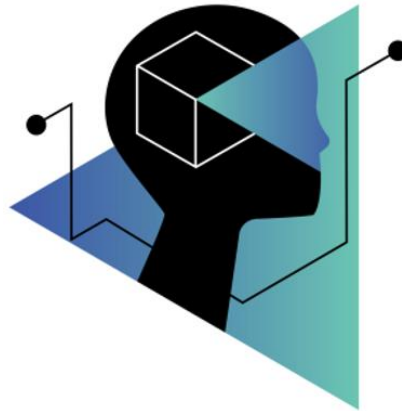


## PhD Talent Coordination Team

### Events:

- [Job Market for Young Researchers: 27 March 2025](#) @ Flanders Expo, Ghent
- [Job Shadowing](#)
- KBC PhD Winter School
- Interactive Career Days @ J&J
- **PhD Talent Stakeholder Meeting**
- **PhD Talent Advisory Board**

Find us on: <https://vlir.be/phd-talent/>



## PhD Talent Pool Flanders

- Recruitment platform
- For PhD-holders and employers in search of PhD talent
- To better and faster align the supply and demand for PhD talent.

Find us on: <https://phd-talents-be.jobteaser.com/>

## Interuniversity training offer for young researchers

- Interuniversity training offer of all the five Flemish universities
- Specifically for early career researchers

Find us on: <https://phd.vlir.be/en/homepage/>

